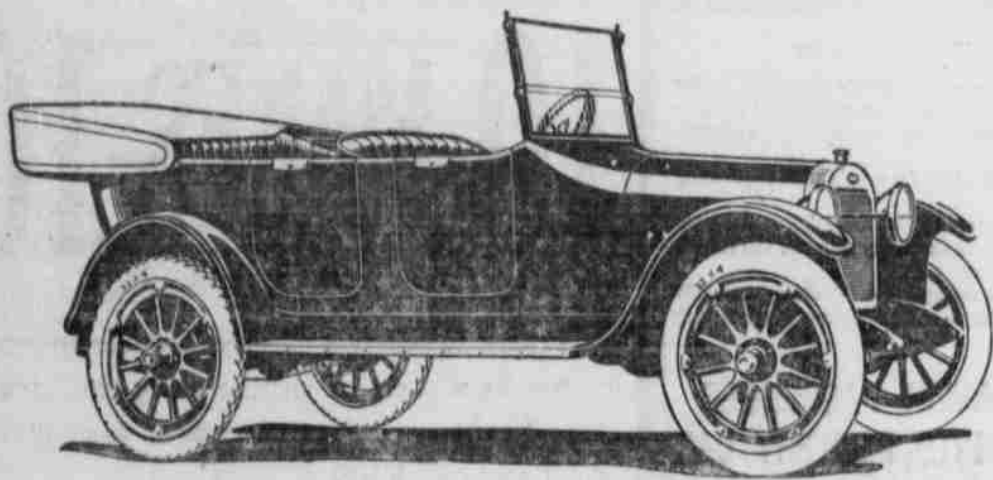


Caught On The Road?

No juice, no spark, no nothing! There's just one way to avoid such a calamity—let me put your electrical parts in proper working order. I specialize in electrical work and only electrical work. When I finish a job it's done right. TRY ME AND SEE!

R. D. BARTON

171 South Commercial Street



A Real Investment

We know that this Oakland Sensible Six Touring Car costs less to own, operate and maintain than any other automobile built. Our customers are regularly reporting mileages from it of from 18 to 25 per gallon of gasoline and from 8,000 to 12,000 on tires.

Touring car, \$1275, F. O. B. Salem, Ore.
Additional for Wire Wheel Equipment, \$75.00

American Automobile Co.

185-197 S. Commercial St. Salem, Oregon. Phone 399

Keeping The Buick Car In Trim

After driving a car all winter in a climate which makes necessary the use of anti-freeze solution, the cooling system should be cleaned out thoroughly before the warm weather comes on. This is a simple task and in many cases a necessary one, because it seems that no matter what kind of anti-freeze solution is used, a certain amount of sediment is bound to settle in parts of the system or adhere to the cylinder and radiator walls in such a manner as to interfere to a greater or less extent with efficient operation of the cooling system. Add to this the sediment that always results from heating water in any kind of a vessel, from a teakettle to a steam boiler, and the reason for cleaning the cooling system is quite apparent.

Many methods of cleaning the cooling system have been suggested from time to time by various people, but some of them are questionable because there is danger of injuring the radiator on account of the caustic chemicals used. The following method can be recommended as being absolutely safe and at the same time will give the cooling system a thorough flushing that will remove practically all loose foreign matter.

First, drain the system by means of the petcock in the bottom of the radiator. Then turn a hose in the filler cap of the radiator to admit a moderate stream of water. Next start the motor and let it idle at a fairly good rate of speed, leaving the petcock in the bottom of the radiator open all the time. This will not only flush out the water jackets and the radiator, but because of the fact that the motor is running the water pump will be kept in action and will send a good stream of water all through the system, flushing it out thoroughly.

After this is done, examine the hose connection from the cylinders to the radiator, to see that they are in good condition. It sometimes happens that anti-freeze solution will have a bad effect on the inside of the hose, while from the outside it will be apparently as good as ever. A fairly reliable test is to press the hose firmly between the fingers. If it seems good and firm it is probably in good condition. If it is weak and flabby it may be sucked together from the force of the water pressure and either partially or completely cut off the circulation of water.

Some drivers seem to think that simple antifreeze solutions made from water and alcohol do not need to be removed, assuming that the alcohol will evaporate in time and the addition of water will be sufficient. This is not true, because while the alcohol will evaporate, the sediment will remain. As a matter of fact, the cooling system should be flushed out once or twice a season, whether anti-freeze solution is used or not.

Progressive Electric Service Station Here

The Auto Electric Service company, 171 South Commercial street, under the management of R. D. Barton is fast making a name for its satisfactory and dependable work. These people are continually installing new instruments and machinery to speed up jobs and insure reliable work. They handle the best parts, accessories and equipment that can be obtained.

Mr. Barton has installed a special high grade test instrument, known as Ambu, which quickly determines the condition of the electrical system of cars. He will make these tests free of charge and they often times indicate the beginning of some trouble which can be quickly corrected and save a big expense later. Ambu not only tells the location and kind of trouble but also how to repair it. Car owners taking advantage of this opportunity need not lay up their cars or go to the trouble and expense of sending parts back to the makers of the electrical equipment. Serious derangements of electrical starting and lighting systems have been located and repaired in 20 minutes through the aid of Ambu.

By means of another special instrument they can tell whether or not the plates of a battery are working properly. This company has equipment for testing armatures and generators and carries a large stock of repair parts for self starting systems.

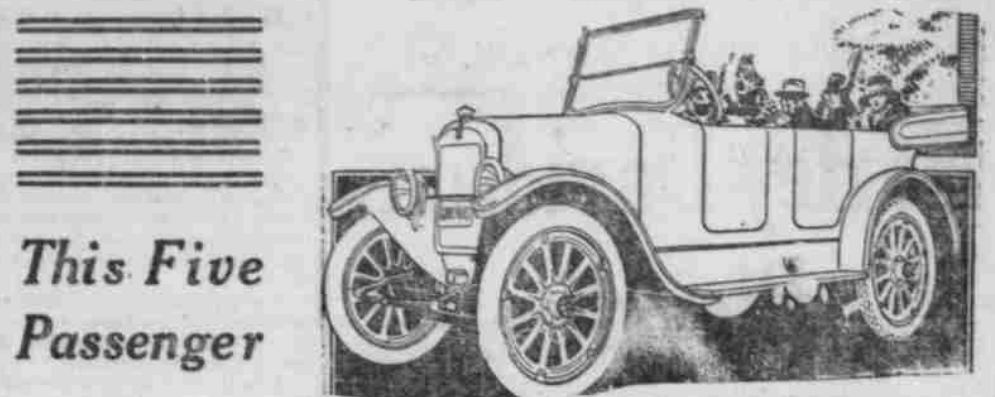
Buick Expansion

Flint, Mich., March 17.—The Buick Motor Car Co. has orders for every machine it can produce up to July 1. The company is now producing over 400 cars daily, and notwithstanding the setback caused by war reconstruction hopes to equal its 1917 production of 125,000 cars. More men are now employed than when the armistice was signed.

A warehouse and loading dock have been completed, which can accommodate 1000 cars. By a double decking arrangement an additional 1000 sq. ft. of space can be stored. A new bronze and aluminum foundry is just being finished and will be in operation soon. The present foundry building, which adjoins the sheet metal plant, will be used for the further expansion of sheet metal work. A three story building, designed and built for the manufacture of Liberty motors, has been completed, but inasmuch as peace has brought aircraft engine work to a halt the new structure will house the tool designing department.

Exide Battery Man Talks To Car Owners

Few automobile owners realize the work being done by the starting and lighting batteries in their cars, says R. D. Barton, manager of the local Exide Battery Depot at 171 South Commercial street. The battery is there to start the car, they reason, and start the car it should, regardless of anything else. In a measure they are correct in this reasoning. The battery should start the car at all times and it will if given half a chance. It is hard to realize the amount of power there is in a little storage bat-



This Five Passenger

BRISCOE TOURING CAR

Is the sweetest running automobile ever built at the price. Success has made it. Increased production has put the price easily in reach of all prospective car purchasers. It has surprising roominess. Try it! You will miss the real meaning the car holds for you if you fail to see the beautiful, handsomely finished and completely equipped 5-passenger touring BRISCOE.

\$1035

W. A. RUTHERFORD

F. A. RIEDESEL

Rutherford & Riedesel

CAPITAL GARAGE

Briscoe and Chalmers Automobile Agency and Automobile Accessories
Phone 88—173 S. Liberty Street

FREE FREE

Free Service Is Slow Service

The only thing we give FREE is AIR. We charge a reasonable price for our work and give you your money's worth. We handle Goodrich, United States, Fisk and Firestone Tires.

The Salem Vulcanizing Works

W. M. HUGHES

474 Ferry Street

Phone 364

WHAT THE "FONDULAC" WILL ACCOMPLISH

It will do what five horses will do—do it better—do it faster—will work continuously—needs no rest—feeds only when it works—requires one-half the value of feed—it will pull plows, listers, graders, scrapers.

- Will pull two 12 or 14-inch moldboard plows 2 to 2 1/2 miles per hour plowing 3 to 7 acres per day of ten hours, where five horses can pull the same plows.
- Will disc 20 to 25 acres per day.
- Will harrow 40 to 50 acres per day.
- Will cut 20 to 25 acres of grass per day, using two mowers.
- Will harvest 15 to 20 acres of grain per day.
- Will pull a wagon loaded up to 6000 pounds on an ordinary road.
- Will seed 30 to 35 acres per day.
- Will roll 40 acres per day.
- Will pull more than one of many machines or impediments.
- Will pull several wagons, mowers, and other implements in train.
- Will pay for itself and a new Ford in two years.
- Will pull any implement or machinery with all the speed the implement can stand, regulating the speed by the use of the varying sized gears, which can always be furnished when desired.
- Guaranteed 10 years by the company.

PERFORMANCE GUARANTEED

We positively guarantee that the combination of the FONDULAC and a Ford in good condition will start and run continuously on high gear, developing power equal to five good horses. LIFE OF FORD equipped in this manner will be at least as long as when used for pleasure, as the load on the motor and transmission gears is not increased. The engine does the pulling on high gear. The pull comes on the new axle, wheels and draw bar which are amply heavy to withstand it.

RUTHERFORD & RIEDESEL, Capital Garage
Phone 88 173 South Liberty St.

How's Your Spark?

Is your motor getting a red hot spark that makes it purr along smoothly and evenly, or is it getting a weak uncertain spark that makes it jerk and skip and sputter. If you want to have a smooth-running motor bring it to me. I specialize in just such work.—Ignition Magnetoes, Self Starters and "Spark"

R. D. BARTON

171 South Commercial Street

tery. An Exide battery weighing 60 pounds will give one horse power for approximately 20 minutes. This is enough to raise its own weight to a vertical height of nearly six miles. This seems like power enough to start the car an unlimited number of times but to crank an automobile engine a battery must develop more than one horse power for a few seconds or minutes, as the occasion demands, and therefore the current that is taken from the battery must be put back in it satisfactory operation is to be obtained.

No warning is given by the battery when it is not being properly treated. It works on uncomplainingly until its last ounce of strength is exhausted. The complaining is then done by the automobile owner when he finds out how much of a repair bill he has to pay on account of his own neglect and abuse of his battery. It is to eliminate this abuse to the battery that we make free inspections of all makes of batteries at our Exide service station, as these tests show whether the battery is receiving too much or not enough charge, and also acts as a check on the condition of the balance of the electrical apparatus. The attention a battery requires is very small as compared to the work it does, though very important and essential to satisfactory operation.

County Finds Petit Jury An Expensive Luxury To Keep

The petit jury is a pretty expensive institution for Marion county, as the records show that the sum of \$1278.30

was paid out between January 1 and March 31 of this year just for the \$3 a day and mileage at 10 cents per mile. The petit jurymen is allowed \$3 a day and if he happens to live in Salem, he is allowed 20 cents a day for mileage. The grand jury for the winter and spring terms of court only cost the county \$118.30.

To the credit of Marion county it may be said that in these two terms of court, only two criminal cases were filed and only one tried, that of Roy Green, the Oregon Electric brakeman.

For the first three months of the year, 23 law actions were filed with the county clerk, 29 cases in equity, 11 divorce cases filed and the two criminal cases.

In the two terms of the circuit court 15 civil cases were tried by jury and one criminal case. Five equity cases were tried by the court, while five divorces were contested. The non-contested divorce cases for the three months numbered 15.

Auto Washing Polishing, Greasing and Simonizing

You would not think of appearing before the public in dirty clothes. Why then a dirty car, when you can get it done first class at reasonable prices.

PHONE 1260 320 N. COMMERCIAL ST.