

ANNOUNCING
that the
J. C. Penney Co.
have now received a nice new line of
**Women's
Dresses
Coats
Suits**



which are the latest creations for Spring, and each day brings more good ones that will please you. Remember that we have our expert buyers at the eastern markets all the time picking out the best for our 197 busy stores. Due to buying in such large quantities for such a number of stores we are enabled to sell you at prices that will surprise you. You will find we have the latest in materials, styles and colors, so that we can give you what you want.

- DRESSES.....\$5.90 to \$21.50
- COATS.....\$12.50 to \$27.50
- SUITS.....\$23.50 to \$45.00
- SKIRTS.....\$4.98 to \$9.90

Look at them. It will convince you of their merit.

J. C. Penney Co.
Incorporated
197 BUSY STORES

OPPOSING FORCES OF LEAGUE BEGIN ATTACK

Senators Borah, Reed, And Thomas Fire Opening Guns In Bombardment.

New York, March 7.—The campaign of republican and democratic senators in opposition to the covenant of the league of nations was in full swing today. Senators Borah, Idaho, Reed, Missouri, and Thomas, Colorado, fired the opening guns in vitriolic attacks against the present draft of the league constitution and bitter denunciation of the article guaranteeing the territorial integrity of league members, at the Society of Arts and Sciences dinner here last night.

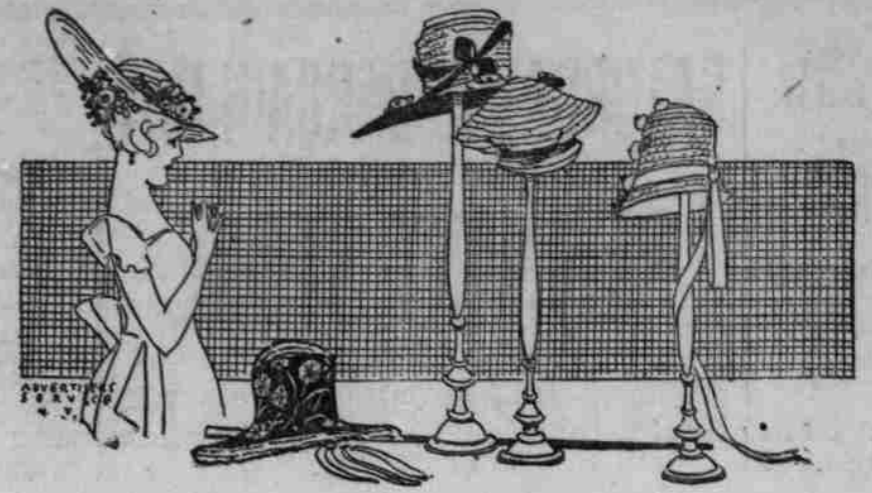
Borah declared the league scheme should be referred to a plebiscite and expressed confidence that the people of the United States would "follow the traditional policy of the country, as expressed by George Washington."

Reed described the league as a "Trojan horse," full of enemies to the United States.

Thomas declared that there is in this country a substantial fear of Asiatic domination and said the most tremendous domestic problem facing the nation is Japanese immigration.

TEN MILLION DOLLAR FIRE.

Rio De Janeiro, March 7.—Twelve million dollars was the estimated damage today in a fire which broke out on the Santos docks Tuesday. The fire is expected to burn until the end of the week. Losses included 90,000 bags of coffee, 24,000 bales of jute and the entire contents of several warehouses.



Smart Spring HATS

Hats of those new rough straws and Pisere with crepe facings--showing much originality in line and color.

Shapes are small and close fitting--Sailors, Mushroom, Turbans, and Odd irregular brims.

In every choice of effective trimmings and colors--cherry, red, henna, navy, taupe and black. Here is but a hint of the delightful variety.

Priced \$1.49 to \$6.90

GALE & COMPANY

Our Prices Always the Lowest

Commercial and Court

Formerly Chicago Store

BUSICK'S BUSICK'S

Our regular prices you can buy at these prices every day

SPECIALS

for THIS WEEK

Flour

- Crown\$2.95
- Olympic\$2.95
- Brilliant\$2.90
- Pacific\$2.85
- Diamond\$2.55

Sugar

- 100 lbs. Cane\$9.65
- 10 lbs Cane\$1.00
- 5 lbs. Cane50c
- 2 1-2 lbs. Cane25c
- Iceing sugar, lb12 1-2c
- Dark sugar, lb10c

Syrups

- No. 5 Dark Karo47c
- No. 10 Dark Karo92c
- Large Log Cabin\$1.15
- Med. Log Cabin60c
- Small Log Cabin25c
- 1-2 Gal. Uncle John's\$1.00
- Small Uncle Johns50c

Beans

- Mex. Red, lb9c
- Pink, lb8 1-2c
- Fancy Whites,8 1-3c
- Limas, lb14c
- Split Peas, lb10c

Breakfast Foods

- Puff Rice, pkg13c
- Puffed Wheat, pkg13c
- Grape Nuts, 2 pkg25c
- Roman meal, pkg27c
- Ralstons Bran15c
- Mathen's Oats, pkg30c
- Quaker Oats, pkg30c
- Golden Rod, pkg32c
- Cream Rolled Oats, lb7c

Canned Vegetables

- Standard Corn20c
- Standard Tomatoes20c
- Standard String Beans.....20c
- No. 2 Pork and Beans.....18c
- No. 1 V.C. Pork & Beans14c
- No. 1 Taylor's Pork and Beans10c
- Shrimp, can15c
- Clams, flat cans15c
- Clams, tall cans20c

Raisins

- Seedless, bulk15c
- Seedless, pkg15c
- Seeded, pkg14c
- Fancy Dry Peaches18c
- 2 lbs. white figs25c
- Dry Apples, lb12c

Jello

- All flavors11c
- Jiffy Jell11c
- Knox Gelatine18c

Coffee

- Royal Club Coffee, lb40c
- Royal Club, 3 lbs\$1.10
- G. A. Coffee,35c
- G. A. Coffee, 3 lbs\$1.00
- Dependable, 3 lbs\$1.10
- M. J. B. lb42c
- M. J. B. 2 1-2 lbs\$1.00
- M. J. B. 5 lbs\$1.95
- Golden Gate, lb45c
- Golden Gate, 2 1-2 lbs...\$1.05
- Power, 1 lb30c
- Arbuckles, lb35c
- Bulk Coffee, lb30c

Tea

- 1-2 Tree Tea27c
- 1-2 lb. Lipton's40c
- 1 lb. bulk tea45c
- 1-2 lb. Dependable23c
- 1-2 Folger's Shasta23c

Our Coffee

AND TEA PRICES Are Below the Present Wholesale Prices. Buy now and save from 5c to 10c lb.

PRICES IN THIS COLUMN GOOD FOR 4 DAYS ONLY

- 50c Instant Postum... 42c
- 30c Instant Postum... 22c
- Plain Postum22c
- Ghiradelli's Chocolate... 29c
- Spices all flavors10c
- Two Post Toasties25c
- Two Kellogg's25c
- Fresh Crisp Soda Crackers, lb.17c
- Graham Crackers17c
- Blue Jacket Sardines.... 11c
- 5 Bars White Soap25c
- 5 Bars No Rub Naptha soap25c
- 3 Bars Cream Oil Soap... 25c
- Light House Cleanser, can 6c

Labor Troubles In Frisco May Not Be Settled Soon

San Francisco, March 7.—Likelihood of the shipbuilding troubles being settled by Monday is discounted today by

A. P. Beckmeyer, representative of the machinists' union. Beckmeyer states that unless there are more definite advances by employers, Sunday's mass meetings will discuss plans only for continuance of the strike for a 44 hour week. The local shipyard laborers union

Pacific Cable Service To Be Resumed By Monday

San Francisco, March 7.—Prospects were good today for a resumption of the Pacific cable service by Monday. The cable ship left Honolulu March 5 for Midway Island, where the break in the Commercial Pacific cable occurred February 18. It should arrive off the island tomorrow. With clear weather the break should be repaired speedily, as it is in shallow water. This is the only trans-Pacific cable. Business for the Orient has been routed via Europe since the break, subject to long delay, or has been sent by radio at a high rate. The cable to Australia has refused to handle any business for the Orient because its own business is heavy.

WE ARE NOW READY TO TAKE CARE OF YOUR ELECTRICAL WANTS AT 379 STATE STREET WELCH ELECTRIC CO.

Willamette Valley Transfer Company

Salem Office 171 S. High Street Phone 1400
Portland Office 230 Ash Street Phone Broadway 454

Ours is the only line of auto freight trucks operating between here and Portland. We also make

DALLAS, MONMOUTH, INDEPENDENCE, SILVERTON

We buy produce of all kinds and with our transportation facilities we are able to pay the highest cash prices. Order your freight routed our way. Sell your eggs, dressed meats, poultry, etc., to us.

The CAST

George C. L. Snyder, Miss Olga Gray, Oscar B. Gingrich, Miss Florence Cartwright, James Mott, Mrs. Walter Spaulding, Ben W. Olcott, Carl Hinges, E. Cooke Patton, Bunny Meiring, A. L. Fryer, Dan Langenberg, Mayor C. E. Allen.

The Elks Announce Their Annual Play for 1919

Miss Olga Gray in "Officer 666"

Grand Theatre, Wednesday-Thursday, March 12-13. See Page 6 Today' Journal

"Officer 666"

The 1919 Elks play "Officer 666" will be produced under the direction of James Mott, who staged the 1918 Elks play, "The Man From Home" and the 1917 Elks play "Get-Rich-Quick-Wallingford."