

GASOLINE FIRES CAUSE OF PANIC

Experienced Man Knows What to Do and Jumps Immediately for Some Preventive.

HAVE SMALL EXTINGUISHER

Large Chemical Devices Are Too Bulky and Cannot Be Laid in Any Position—Start Work of Extinguishing in Drip Pan.

When gasoline takes fire it is a serious matter, but the most dangerous accessory to a fire is the one you least expect, namely, panic, writes William H. Stewart, Jr., in New York Times.

Small Extinguisher Is Best.

The novice stands aghast as the first burst of flames come from the carburetor. The experienced man jumps for the nearest preventive. At least one small fire extinguisher should be carried on every car.

Always turn off the gasoline at the tank to stop feeding the flames. Ordinarily there is not more than two ounces in any float chamber, and this will not last long.

Begin at the Bottom.

So remember, always start at the bottom and work upward. If there is a flame on the ground beneath the car use the self-starter with gears in mesh to move to another position.

Everyone knows that any kind of a fire is dangerous, but if the above suggestions are employed under self-control the flames starting from a carburetor backfire will be efficiently stopped at the source.

ONE WHEEL BECOMES LOCKED

Trouble is Due to Fact That There is Too Much Play in Brake Linkage—How to Remedy.

The owner who is not diligent and neglects the parts he does not see or which do not give trouble usually may find some time that upon starting one of the wheels becomes locked, even though the brake pedal and lever are free.

PNEUMATIC TIRES ARE BEST

Reduction in Wear and Tear on Trucks and Greater Speed Are Among Advantages.

A trip over the Lincoln highway from New York to Philadelphia provides many surprises to touring motorists in the multiplicity of big rubber-tired freighters that ply constantly between these two cities, hauling every conceivable kind of merchandise.

TOP SPEED HARD ON AUTOMOBILES

Rushing Car Over Rough Roads Means More Than Inconvenience of Occupants.

SOME EXAMPLES ARE CITED

Rubber-Shod Wheels Absorb Small Shocks and Deaden Larger Ones—Sledge-Hammer Blows Are Most Destructive.

Hammering a car at top speed over rough roads involves more than inconvenience to the occupants. There is a law of physics which reads that the energy of a moving body varies as the square of its velocity.

Examples of Velocity.

"Double the speed of a projectile and its capacity for delivering a blow is multiplied by four. Triple the speed and the energy is increased nine times. If one bullet has twice the speed of another bullet of similar shape and weight it will penetrate a target four times as deep.

Reckon Increased Velocity.

Engineering problems, which are simple when low speed is involved, become enormously difficult when an increased velocity must be reckoned with.

While the automobile has the advantage over the locomotive in that its wheels are shod with rubber which absorbs small shocks and deadens larger ones, it is at a much greater disadvantage with respect to the surface over which it travels.

FILLING BATTERY TOO FULL

As Bad as Not Putting in Any Water, as Overflow Runs into Bottom, Eating It Out.

Filling your battery too full is as bad as not putting any water into it at all. When the cells are too full, rough riding or a rapid charging of the battery due to long sustained or rapid driving forces the electrolyte to overflow and run down into the bottom of the battery box.

PIPE EXHAUST FROM GARAGE

Old Drain Pipe Is Used for Purpose of Carrying Off Unpleasant or Dangerous Fumes.

Asphyxia caused many deaths in garages before it became generally known that a garage must be well ventilated and the doors left open if the automobile engine is kept running any length of time, writes P. P. Avery in Popular Science Monthly.

PIPE EXHAUST FROM GARAGE

Old Drain Pipe Is Used for Purpose of Carrying Off Unpleasant or Dangerous Fumes.

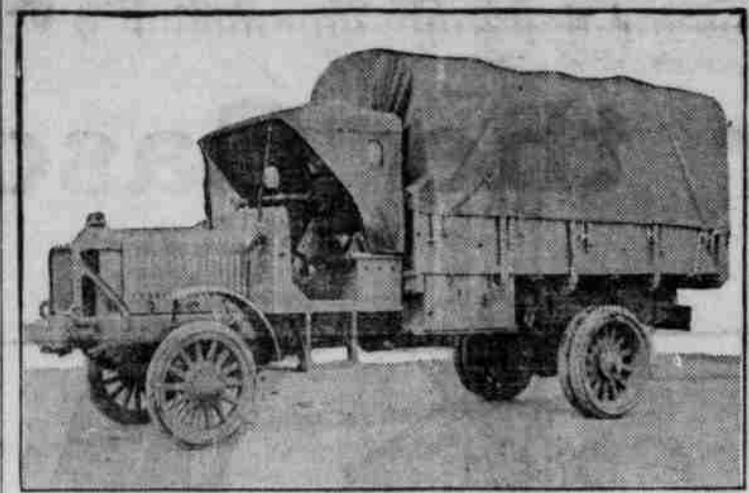
Asphyxia caused many deaths in garages before it became generally known that a garage must be well ventilated and the doors left open if the automobile engine is kept running any length of time, writes P. P. Avery in Popular Science Monthly.

PNEUMATIC TIRES ARE BEST

Reduction in Wear and Tear on Trucks and Greater Speed Are Among Advantages.

A trip over the Lincoln highway from New York to Philadelphia provides many surprises to touring motorists in the multiplicity of big rubber-tired freighters that ply constantly between these two cities, hauling every conceivable kind of merchandise.

FARMERS IN FAVOR OF RURAL EXPRESS AND WANT IT PERMANENT INSTITUTION



New Successful Standardized Truck B—One of the Type That is Solving the Transportation Problem.

A counterpart to the many complex problems that will face allied and American statesmen when ultimate peace comes is the rural motor express movement that the government is trying to stimulate to success, writes Walter A. Birmingham in Chicago Evening Post.

Demand of Farmer.

S. V. Norton, a member of the Ohio state commission appointed to push all truck movements, says that the farmer demands—and is entitled to—as many assurances as the allies seek from Germany.

BIG ADVANTAGES OF MOTOR TRUCK

Longer Hauls at Less Cost Disclosed in Reports to Bureau of Crop Estimates.

DUE TO GREATER EFFICIENCY

Made-Over Passenger Cars and Trailers Are Used by Farmers in Various Parts of United States for Hauling Crops.

(Prepared by the United States Department of Agriculture.)

Motortruck hauls in 1918 from farm to shipping point averaged 11.3 miles, while wagon hauls averaged 9 miles; and a motortruck made 3.4 round trips per day over its longer route of 11.3 miles, while wagons made 1.2 round trips per day over the 9-mile distance.

MEMORIAL TREES FOR DEAD

Governors of Each State Asked to Co-Operate in Movement for Tree Planting.

Motor highways to be marked with memorial trees for the soldier dead is the plan being urged by the American Forestry association as a suitable way to mark the memory of the heroes of the war.

LOADING PRODUCE INTO A MOTORTRUCK

ports made by correspondents of the bureau of crop estimates of the United States department of agriculture.

A similar inquiry in 1906 showed an average for wagons of 19 cents per ton-mile for hauling corn or wheat, and 27 cents for cotton.

KEEP OIL FROM AUTO TIRES

Where Cars Are Kept in Private Garages Box of Sawdust Will Catch All Drippings.

Motorists who keep their cars in a private garage should keep a box filled with sawdust on the floor in such a position that it will catch oil drippings from the mud pan and oil reservoir.

NO RECENT CROP RECORDS ISSUED

Government Information Is Seven Years Old. City and County About As Slow.

If the farmer or fruit raiser should happen to feel disposed to acquire some information from the United States department of agriculture and should write to Washington, D. C., for a pamphlet for some real facts as to whether farming is profitable in the Willamette valley, he would receive in due course of time bulletin No. 705.

BUMPER CROP IN PEARS AND PRUNES

Berry and Fruit Men On Easy Street in Willamette Valley Mortgages Paid Off.

Robert C. Paulus, manager of the Salem Fruit Union, makes the startling announcement that from the way things look, the berry business will be one of the leading industries of the Willamette valley.

EXTRA COMPARTMENT PUT IN AUTOMOBILE

Ingenious Method of Stowing Away Luncheon Equipment.

Table Is Handy Feature and When Eating in Car Insects and Other Annoyances Are Avoided—Place for Other Materials.

An ingenious method of construction and manner of stowing a folding table, and other details of luncheon equipment, is used by the owner of a light five-passenger car.

TRAINS HAVE RIGHT-OF-WAY

BETTER SAFE THAN SOBER.

LOOK BEFORE YOU CROSS.

KEEP YOUR EYE ON THE ROAD.

You Are Going to Buy a New Tire
You Are Undecided What To Buy---
We appreciate your position in the matter. Too many makes of tires and too many claims made for them.
Republic Tires---
Are made by one of the largest tire manufacturers in the world \$20,000,000.00 corporation. Every Republic tire uses Prodim Process rubber known and used only by the Republic.
Every Republic Tire---
If returned for adjustment, and proves defective is settled on a 5000-mile basis. Republic tires are adjusted by us right here in Salem. The above facts should decide for you what to buy. If you have never used Republic tires, eventually you will. If you are using Republics your mind is already made up for you will continue to use them.
SALEM AUTOMOBILE CO.
F. G. DELANO 246 State Street. Phone 97 A. I. EOFF

NO RECENT CROP RECORDS ISSUED
Government Information Is Seven Years Old. City and County About As Slow.
BUMPER CROP IN PEARS AND PRUNES
Berry and Fruit Men On Easy Street in Willamette Valley Mortgages Paid Off.
EXTRA COMPARTMENT PUT IN AUTOMOBILE
Ingenious Method of Stowing Away Luncheon Equipment.
DETAILS AND ARRANGEMENT OF FOLDING TABLE.
Table is Handy Feature and When Eating in Car Insects and Other Annoyances Are Avoided—Place for Other Materials.
An ingenious method of construction and manner of stowing a folding table, and other details of luncheon equipment, is used by the owner of a light five-passenger car.