

## Fordson Tractors

Meeting all of the Requirements of the Valley Farmer.—Every Demonstration Shows the Efficiency of This Small Light powerful Tractor.

Reliability of Operation and Construction Will Make the Fordson an Indispensable to the Valley Farmer and Fruit Grower.—Deliveries are Made as Fast as Possible.—Place your order early if you expect a Fordson Tractor in the near future.

## The Valley Motor Co.

and State Streets

Elbert Thompson, Mgr.

## INFORMATION FOR MOTORISTS AND CAMPERS

Nothing general information on road conditions in Oregon based on data furnished by the Forest Service.

keep the forests valuable by preventing forest fires

### OREGON ROADS.

#### Western Oregon

Willamette Valley-Cascade Mountain Road—Open and in fair condition between Foster and the summit of the Cascade mountains. The bridges along this route are dangerous and particular caution should be used in crossing them.

Hebo-Neskowin—Open and in permanent summer condition for entire route.

Tillamook-Willamina—Open in fair condition for entire route.

Dead Indian—Open between Pelican Bay and Ashland. Passable for autos.

Klamath Falls-Crater Lake—Open between Klamath Falls and all Crater Lake points. In poor condition between Klamath Falls and Fort Klamath. All roads to Crater Lake are now open.

Estacada-Cazadero—Open and in fair condition. Road is narrow and rough.

Grater Lake Road—Open and in good condition between Medford and Fort Klamath.

Willamette Road—Open between Eugene and a point several miles beyond Oak Ridge. Closed to all vehicles beyond this point.

Columbia River Highway—Open and

in good condition, Portland to Cascade Locks. Closed for construction between Cascade Locks and Hood River. Cars may be shipped between Cascade Locks and Hood River by rail or boat on week days. Eagle Creek public camp grounds is located 45 miles east of Portland on this road, which is paved the entire distance. Here the Forest Service maintains a free picnic and camp ground for recreation use. Tables, benches, fire places, running water, and other conveniences are available at this camp ground.

McKenzie Pass Road—Open and in good condition, Eugene to west boundary of the Cascade National Forest. Poor condition from west boundary of the Forest to Sisters.

Drain-Scottsburg—Open and in good condition, entire length.

Klamath Falls-Bend (via Fort Klamath)—Open and in fair condition entire length, some rough places.

Crescent City-Bandon—Coast road—Open and in good condition for entire route; some rough places.

Grants Pass-Crescent City—Open entire length and in good condition for a few rough places.

Pacific Highway—Open and in fair condition, Roseburg to Grants Pass and Medford. In good condition, Grants Pass to Wolf Creek.

Barlow-Oak Grove Road—Open and in good condition, Portland to Rhododendron. Poor condition Rhododendron to forks of road near Clear Lake. Open but rough, Clear Lake to Cedar Burn Good condition, Cedar Burn to Wapinitia.

#### EASTERN OREGON.

Sparta-East Eagle Park—Open and

## FOR ARMY TRAINING AT WILLAMETTE U.

Young men under the age of 21 years who would like the advantage of securing military training and at the same time continue their regular studies should lose no time in registering at Willamette University for the next coming school year and at the same time enlist in the students army training corps, of the university.

The suggestion is made by Dr. Carl Gregg Doney who explains that the government will look with favor on the men between 18 and 21 years of age who will enlist in the students corps. The situation is that as soon as he is registered for the students army training corps, he is technically on inactive duty. In his questionnaire he so states that he is already in the military service of the United States and his local draft board will place him in Class 5-D, as provided by the selective service regulations.

The student will be permitted to remain in college so long as he remains a member of the students army training corps, unless there is some special emergency calling him into the service. If the young man fails to enroll in this corps, before his registration, his status will be up to the draft board even if he should later enlist in the students army training corps.

After graduation from a college, the president of the college which he attends and the military office of that college will recommend that he be sent to an officers' training camp to prepare him for a commission in what ever service he is best adapted.

Hence for the young man who expects to attend a college or university this fall, it will be to his advantage to at once enroll for the school year and enlist in the students army training corps of the school in which he attends

in good condition entire route. Baker-Cornucopia—Open and in good condition.

Baker-Prairie City—Open and passable for all vehicles, but in poor condition.

Hardman-Spray—Open and passable for machines entire route.

Prineville-Mitchell—passable between Ochoco Station and Wheeler-Crook county line. Open and in excellent condition county line to Beaver Ranger station.

### WASHINGTON ROADS.

#### Western Washington.

Cascade Scenic Highway—Open from coast towns to Sultan. Closed between Sultan and Tye for construction work. Detours not possible. Bridges are not finished across Miller River and the Skykomish River.

Sunset Highway—Open and in good condition from Seattle to Cle Elum. Sixty miles out of Seattle on this highway is the Denay Creek camp grounds, where the Forest Service maintains a free camp and picnic grounds equipped for the use of the public.

Arlington-Darrington Road—Road is open and in good condition Arlington to Fortson. Fair condition Fortson to Darrington.

Olympic Highway—Open and in good condition between Olympia and Quinalt Lake. Open and in fair condition between Olympia and Discovery Bay. Good condition Fairholm to Mora and Forks.

### EASTERN WASHINGTON.

State Road No. 4—Open and in fair condition between Republic and Tonasket.

State Road No. 10—Open and in fair condition between Entiat and Pateros. The road is getting rough in places.

Blewett Pass Highway—Open and in good condition Cle Elum to Wenatchee. This road is now in the best condition it has ever been. Several bridges and the heaviest grades on the old road on the Chelan side of the road have been eliminated and a large number of new turnouts built. No driver should have any difficulty in negotiating this road.

### WHY THE AUTOMOBILE IS ESSENTIAL!

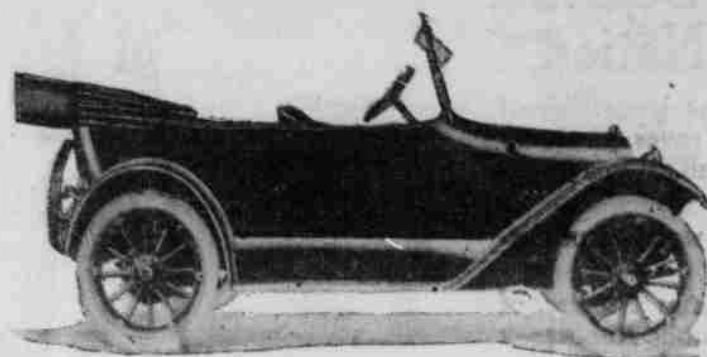
"It is safe to say that there has never been any factor which has been of more aid in the development of the rural sections of the country than the automobile," says F. G. Delano, local dealer in Chevrolet automobiles, "and it is easy to see that the motor car is assuming greater importance and becoming more indispensable each day."

"One feature of this growing popularity of the automobile with the farmer will certainly be to diminish, almost to the vanishing point, the many differences which used to exist between the 'city' and the 'country.' No one would think of picturing the farmer of today as the inferior of his city brother, in worldly goods, intelligence, or ability to travel. In reality, he is quite the reverse; well-posted and well-read—and it must be admitted that the automobile has been largely responsible for this change."

"The automobile gave him an opportunity of getting in touch with the surrounding country in which he lives. He is able to visit his neighbors oftener. He goes to town much more than he used to. He is in touch with the outside world. He is no longer alone."

"It is easy to see what an essential thing the automobile is to the man in the country. It has brought him close to everything desirable. He is no longer an isolated outsider."

"But as a matter of fact, the automobile is an essential everywhere, in town or country, in the city or on the farm. Its ever increasing popularity proves this conclusively. And the automobile is popular because it is useful—because it performs efficiently a mission which before its advent was unfulfilled. As a utility, it has rightfully earned its place in the life and affairs of our people. The business man of today, whether he is a farmer, a manufacturer or a merchant, is effectively economies with the aid of his automobile that he never even dreamed possible."



## The Oregon State Fair Opens at Salem Sept. 23

If you have not been out to the Grounds Recently it will pay you to go. Several large new buildings are being erected, and we have the assurance that this will be the largest and best fair ever held in the state. You will want a new car to drive to the fair and the Chevrolet Four Ninety is the car you want. Get your new Chevrolet now and learn to drive it. Then take your family to the fair and enjoy life.

## Salem Automobile Co.

F. G. DELANO

PHONE 97

A. I. EOFF

246 STATE STREET, SALEM, OREGON

### PIONEER LADY GONE.

Mrs. M. Hanson, a resident of this city for twenty-three years, was buried in the Silverton cemetery on Thursday of last week, having died the previous Tuesday. She had been in poor health for some time. She was 71 years and 21 days old, and was born in the old country. Mr. Hanson preceded her to the grave by five years.

The funeral of Mrs. Hanson was held at Trinity church. Rev. Geo. Henriksen officiating.

A. G. Anderson has been taking care of Mrs. Hanson for some time, during her illness, particularly, and before she died she willed him all her property. The estate consists of the home place on South Water street, and considerable money.—Silverton Tribune.

### SHELL DEPOT EXPLODES

Zurich, Aug. 17.—An explosion in a shell depot at Vasil, Rumania, killed more than 100 persons and injured 150, according to a dispatch received from Bucharest today. The explosion is believed to have been incendiary.

### New Accident Record Past Week in Oregon

During the past week 691 industrial accidents were reported to the state industrial accident commission. This sets a new record for the commission. Four of the accidents were fatal, as follows:

Joe DeMario, Cochran, logging; Carl Barnard, Buxton, brakeman; George Hall, Portland, shipbuilding; E. Shibata, Cochran, logging.

Of the total number reported, 642 were subject to the provisions of the commission act. 27 were from firms and corporations which have reported the provisions of the compensation act, and 18 were from public utility corporations not subject to the provisions of the compensation act. Of this number one was a trespasser, and four being passengers.

\*\*\*\*\*  
\* When you use Journal classification ads get what you want them to—they work fast.  
\*\*\*\*\*

### Three Thousand G. A. R. Veterans in Portland

Portland, Or., Aug. 17.—Three thousand Grand Army veterans have arrived in Portland at noon today for the national encampment which opens tomorrow. Every one of them was housed and happy.

Committees declared everything was ready for the throngs that will arrive late today and tomorrow. Although Portland already was populated to the saturation point, due to the shipbuilding activities, enough homes have been opened to the boys in blue to assure comfortable quarters for every visitor.

Fifteen thousand people are expected including members of allied organizations and camp followers.

### MANY COMMISSIONS

Louisville, Ky., Aug. 17.—Nearly 2,000 student soldiers received commissions as second lieutenants at the first graduation exercises at the artillery training school at Camp Zachary Taylor. Major General William Snow delivered an address.

COMMERCIAL

219 N. COMMERCIAL

## United States Tires

## Pennsylvania Vacuum Cup Tires

## Michelin Tubes Service Cars

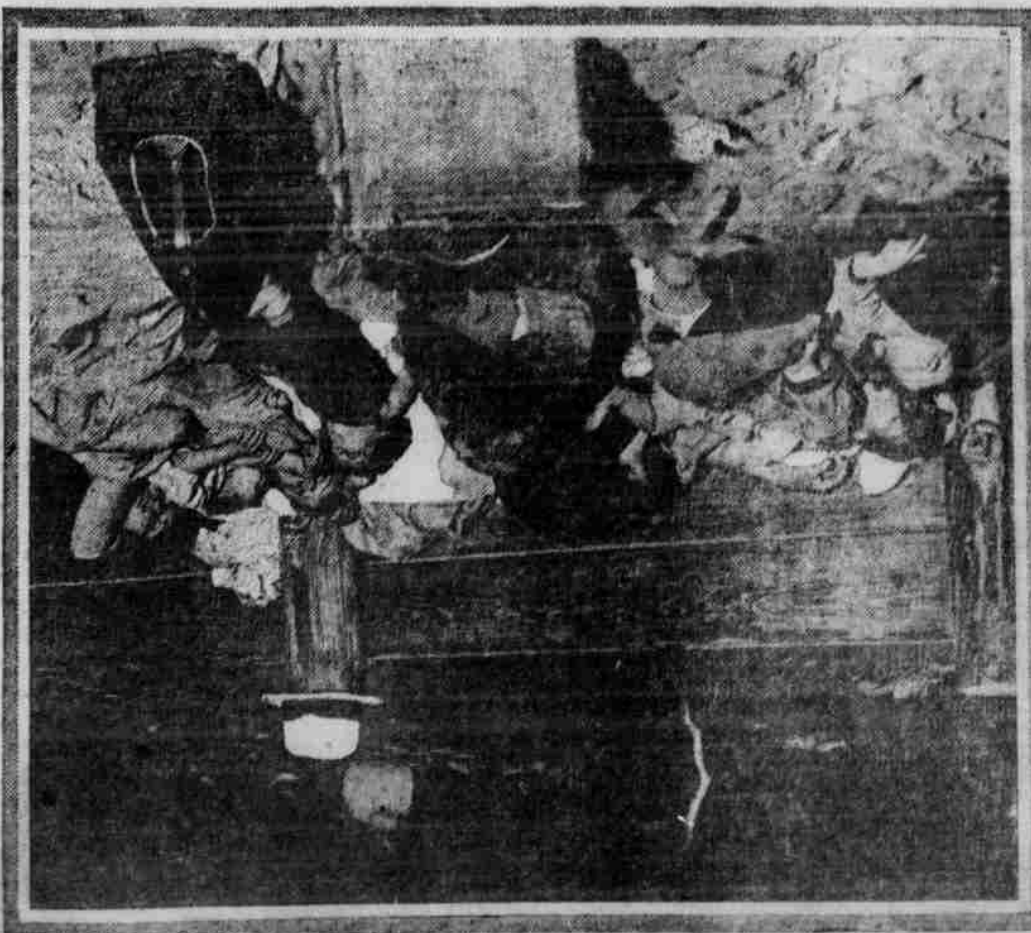
## Accessories

## and Greases

## Vulcanizing and Retreading

## G. G. Quackenbush

PHONE 66



TERRIFIC HEAT DRIVES THOUSANDS TO SLEEP ON THE BEACHES—AN IMMENSELY LARGE FAMILY ASLEEP ON THE BEACH. THE KIDDIES ARE LYING ALMOST ON TOP OF EACH OTHER. MILLIONS WERE DRIVEN TO DESPERATION BY THE HEAT WHICH PERMITTED NO COMFORT FOR ANYONE.

Underwood & Underwood