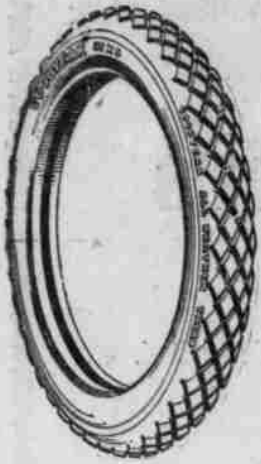


# AUTOMOBILE NEWS AND NOTES OF INTEREST

## BUY WAR SAVINGS STAMPS



### WHY NOT BUY THAT GOODYEAR TIRE TODAY

It means more mileage—They give better service—You will be better satisfied.

EVERYTHING PERTAINING TO RUBBER  
**Watt Shipp Co.**  
GUNS AND AMMUNITION

Phone 363 126 South Commercial



## Fenwick Newell Sings at Chautauqua

Heads Artists Company on Second Day



The Fenwick Newell Concert Company, who will present two programs at Chautauqua on the second day, is one of the stellar trios of the concert platform. Fenwick A. Newell, heading the company, is a lyric tenor who has been advancing very rapidly in popular favor during the past few years. His rich natural voice, under the care and instruction of the two greatest vocal coaches in the country, Radanovits of Chicago and Oscar Sanger of New York, has developed tones of glorious warmth and color.

Miss Lillian Shank, violinist, is an artist of highly developed technique and deep musical understanding, with a record of unusual success on the platform. Mary Jane Grigsby, accompanist, is a true artist at the piano.

Capital Journal Want Ads Will Get You What You Want

## ROAD INFORMATION FOR AUTOISTS AND CAMPERS

This bulletin contains general information concerning road conditions in or near the National Forests of Oregon and Washington, based on data furnished by the field men of the Forest Service.

### TAKE NO CHANCES WITH FIRE.

**DROP NO BURNING MATCHES OR TOBACCO.**—If you have a camp fire, build it away from logs, trees, or rotten wood. Scrape a clean strip around it, digging down to dirt. When you leave, PUT IT OUT. If no water is available use dirt.

### OREGON ROADS.

**Western Oregon.**  
Willamette Valley—Cascades Mountain Wagon Road—Open and in fair condition between Foster and the summit of the Cascade mountains. The bridges along this route are dangerous and particular caution should be used in crossing them.

Hebo-Neakowin—Open and in permanent summer condition for entire route.

Tillamook-Willamina—Open in fair condition for entire route.

Dead Indian—Open between Pelican Bay and Ashland. Passable for autos.

Klamath Falls-Crater Lake—Open between Klamath Falls and all Crater Klamath Falls and Fort Klamath. All roads to Crater Lake are now open.

Estacada-Cazadero—Open and in fair condition. Road is narrow and rough.

Crater Lake Road—Open and in good condition between Medford and Fort Klamath.

Willamette Road—Open between Eugene and a point several miles beyond Oak Ridge. Closed to all vehicles beyond this point.

Columbia River Highway—Open and in good condition, Portland to Cascade Locks. Closed for construction between Cascade Locks and Hood River. Cars may be shipped between Cascade Locks and Hood River by rail or boat on week days. Eagle Creek public camp grounds are located 45 miles east of Portland on this road, which is paved the entire distance. Here the Forest Service maintains a free picnic and camp ground for recreation use. Tables, benches, fire places, running water, and other conveniences are available at this camp ground.

McKenzie Pass Road—Open and in good condition, Eugene to west boundary of the Cascade National Forest. Poor condition from west boundary of the Forest to Sisters.

Drain-Scottsburg—Open and in good condition, entire length.

Klamath Falls-Bend (via Fort Klamath)—Open and in fair condition entire length, some rough places.

Grants Pass-Crescent City—Open entire length and in good condition for a

few rough places.  
Pacific Highway—Open and in fair condition, Roseburg to Grants Pass and Medford. In good condition, Grants Pass to Wolf Creek.

Barlow-Oak Grove Road—Open and in good condition, Portland to Rhododendron. Poor condition Rhododendron to forks of road near Clear Lake. Open but rough, Clear Lake to Cedar Burn. Good condition, Cedar Burn to Wapinitia.

### EASTERN OREGON.

Sparta-East Eagle Park—Open and in good condition entire route.

Baker-Cornucopia—Open and in good condition.

Baker-Prairie City—Open and passable for all vehicles, but in poor condition.

Hardman-Spray—Open and passable for machines entire route.

Prineville-Mitchell—passable between Ochoee Station and Wheeler-Crook county line. Open and in excellent condition county line to Beaver Ranger station.

### WASHINGTON ROADS.

#### Western Washington.

Cascade Scenic Highway—Open from coast towns to Sultan. Closed between Sultan and Tye for construction work. Detours not possible. Bridges are not finished across Miller River and the Skykomish River.

Sunset Highway—Open and in good condition from Seattle to Cle Elum. Sixty miles out of Seattle on this highway is the Denney Creek camp grounds, where the Forest Service maintains a free camp and picnic grounds equipped for the use of the public.

Arlington-Darrington Road—Road is open and in good condition Arlington to Fortson. Fair condition Fortson to Darrington.

Olympic Highway—Open and in good condition between Olympia and Quinalt Lake. Open and in fair condition between Olympia and Discovery Bay. Good condition Fairholm to Mora and Forks.

#### EASTERN WASHINGTON.

State Road No. 4—Open and in fair condition between Republic and Tonasket.

State Road No. 10—Open and in fair condition between Entiat and Pateros. The road is getting rough in places.

Blewett Pass Highway—Open and in good condition Cle Elum to Wenatchee. This road is now in the best condition it has ever been. Several bridges and the heaviest grades on the old road on the Cle Elum side of the road have been eliminated and a large number of new turnouts built. No driver should have any difficulty in negotiating this road.

## DEMAND IS MADE THAT ROOSEVELT RUN

### DEMAND IS MADE Governor Whitman's Strength Is Turning Toward Former President

Saratoga, N. Y., July 19.—Francis Hendricks, one of the strongest supporters of Charles Whitman in the republican state convention here, today signed his name to the petition asking Colonel Roosevelt to make the race for governor.

Charles E. Hughes has telegraphed

his friends to sign his name to the petition.

New York, July 19.—"There is only one thought in my heart and you know what that is," Colonel Theodore Roosevelt said here today, when asked if he had anything to say regarding the unofficial convention of republicans at Saratoga. He referred to the news regarding his son, Lieutenant Quentin Roosevelt, reported dead in an aerial combat in France.

"I have had no conference with any living man on the subject of politics. I want none. I am not interested in politics at this time. It is farthest from my thoughts."

Colonel Roosevelt returned to Oyster Bay with Mrs. Roosevelt and their daughter, Mrs. Richard Derby. He asked that he not be disturbed again today.

The round robin appeal pointed out to Colonel Roosevelt the necessity of his stepping in to unite factions of the party. It was signed by many republicans who in the past have opposed the colonel. Among those was William Barnes, Merton E. Lewis, attorney general, who is a candidate for the office, wrote the colonel, declaring he would withdraw if Roosevelt would become a candidate for governor of New York.

### Battery Attention Regarded Important

Extra lights, trouble finders, cigar lighters and other such attachments on a motor car are, no doubt, great conveniences; but they may cause a motorist considerable trouble unless he gives attention to his battery.

These appliances all draw electricity from the battery, and often the generator on the car is not adjusted so that it will replace the current they use and thus overcome the heavy drain on the battery. As a consequence the motorist may find that his starter is inoperative, and cigar lighters are cold comfort when you must crank your car by hand. The best way to eliminate such trouble is to have a competent battery man look over the car and see if such devices are overloading your battery.

"You do not need to pass up such conveniences," says Mr. Deppo, the local representative of the Willard Storage Battery company. "If you have your battery taken off the car and recharged at proper intervals. The cost of recharging is small, but it is the price one must pay for added electrical attachments, if he wants to keep away from trouble and inconvenience."

## The Thrift Car



### Model 90—First Choice of Women

—because it is a beautiful car of ample room, wide seats, deep cushions and refinements throughout.

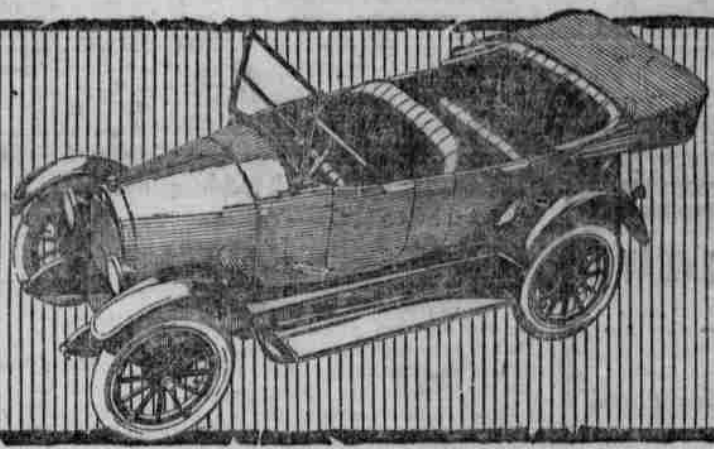
—because it is powerful, easy to handle, with convenient control and easy operating clutch.

—because it has electric Auto-Lite starting and lighting, vacuum fuel system, large tires non-skid rear, cantilever springs and 106-inch wheelbase.

—because it is economical and backed by Overland service everywhere.

Fine points of Overland superiority:  
Appearance, Performance,  
Comfort, Service and Price

Light Four, Model 90 Touring Car



### VALLEY MOTOR COMPANY

FRONT & STATE STS.

ELBERT THOMPSON, Mgr

### Exide Battery Man Talks To Car Owners

Few automobile owners realize the work being done by the starting and lighting batteries in their cars, says R. D. Barton, manager of the local Exide Battery depot, at 148 S. Commercial street. The battery is there to start the car, they reason, and start the car it should regardless of anything else.

In a measure they are correct in this reasoning. The battery should start the car at all times and it will if given half a chance.

It is hard to realize the amount of

power there is in a little storage battery. An "Exide" battery weighing 60 lbs., will give one horse power for approximately 30 minutes. This is enough power to raise its own weight to a vertical height of nearly 6 miles.

This seems like power enough to start the car an unlimited number of times, but to crank an automobile engine a battery must develop more than one horse power for a few seconds or minutes, as the occasion demands, and therefore the current that is taken from the battery must be put back in, if satisfactory operation is to be obtained.

No warning is given by the battery when it is not being properly treated—it works on uncomplainingly, until its last ounce of strength is exhausted.

The complaining is then done by the automobile owner when he finds out how much of a repair bill he has to pay on account of his own neglect and abuse of the battery.

It is to eliminate this abuse to the battery that we make free inspections of all makes of batteries at our "Exide" Service Station, as these tests show whether the battery is receiving too much or not enough charge, and also act as a check on the condition of the balance of the electrical apparatus.

The attention a battery requires is small compared to the work it does, though very important and essential to satisfactory operation.

JOURNAL WANT ADS SELL

## GATES HALF-SOLE TIRES

Cost 1/2 As Much

Both Use Gates Half-Sole Tires.

The small car and the limousine—Gates Half-Soles appeal to the owners of both alike.

Their appeal lies in Service—long mileage—freedom from trouble. These are valuable to the merchant with prompt deliveries to make—equally valuable to the professional man—and to the pleasure party for which an untimely puncture may mar a perfect day.

They cost only one-half as much as other tires and are guaranteed for thousands of miles of puncture-proof service.

Look into this—now!

**S. S. Montgomery**

177 South Commercial Street.

Phone 428



219 N. COMMERCIAL

219 N. COMMERCIAL

## "QUACK'S"

Our business is built on SERVICE. It costs you no more to buy from us, 10 miles in the country than it does in our store.

Our Line is complete from a 28x3 to a 38x7.

UNITED STATES AND PENNSYLVANIA VACUUM CUP TIRES.

**2-Service Cars--2**

PHONE 66

PHONE 66