

VAUDEVILLE SALEM'S ONLY VAUDEVILLE SHOW

UNDINE ANDREWS Novelty Singing and Dancing

VANCE and TAYLOR In a Comedy Novelty "CORSETS"

WILLIAM MORROW Mimicry and Songs

WEEKLY

EXTRA

HERBERT RAWLINSON in "THE HIGH SIGN"

COMEDY

HIPPODROME VAUDEVILLE SELECTED FOR SUNDAY



BOYS IN COUNTRY IN THEIR EMERGENCY CLUBS ARE BUSY

County Leader Gives Instances Of Their Splendid Work Done.

The boys of the rural districts of Marion county have an eye to the patriotic situation...



HE'S WEARING THE BLUE SHIRT AGAIN! The most beloved star of motion pictures is re-appearing in one of his famous, favorite roles of the great north woods.

BIG BILL FARNUM

"The Heart of a Lion" Based on Ralph Connor's Novel "The Doctor" Staged by Frank Lloyd

FIRST TIME SHOWN HERE OTHER FEATURES TOO SUNDAY-MONDAY LIBERTY THEATRE



NATIONAL WAR GARDEN COMMISSION Arrangement of cover on crock containing fermented vegetables...

had been brought to standstill, Foch struck hard along the western side. The front over which we advanced was 22 miles...

ALLIES CONTINUE

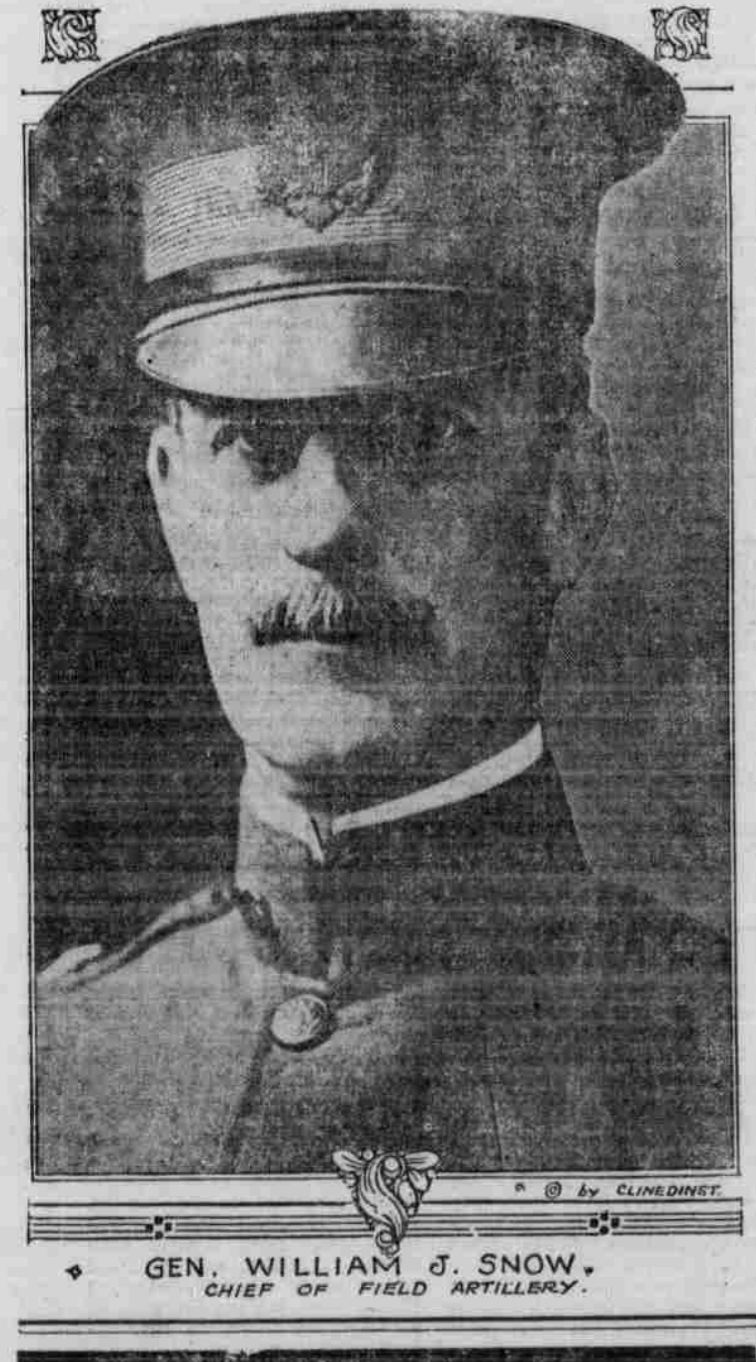
(Continued from page one) ported are rushed from the dressing stations at the front direct to Paris. All the American hospitals are scenes of intense activity...

back. Others smiled wanly at the demonstration of affection. As the news of the Franco-American successes spread through the city, it was a frequent sight to see the French halt Americans and shake their hands...

was stated. The counter attacks were carried out with great force and indicated new and heavy reinforcements by the enemy. Between Souain and Auberive, a seven-mile front east of Rheims, French and Americans advanced a thousand yards beyond their original line late yesterday...

the nearest was at Linton, but the authorities here were unable to get into communication with him. He had been in the hospital there and had left a short time before his father's death. None of the six children were present for the funeral services or burial.

ONE OF UNCLE'S RIGHT HAND MEN



The Daily Capital Journal Job Department Is Busy all the Time. It goes to prove that our work and prices satisfy the users good Printing.

Official French Report Paris, July 20.—(1:15 p. m.)—French and American troops continue to advance on the greater part of the offensive front between the Aisne and the Marne, the French war office announced today...

IMPORTANT HIGHWAY

(Continued from page one) enemy efforts there have been growing lighter and lighter in the last four days. Prisoners report withdrawal of German artillery and infantry concentrations north and northeast of Chateau-Thierry to meet the Franco-American threat northwest of the city.

AMERICANS ATTACKING

By Fred S. Ferguson (United Press staff correspondent) With the Americans between the Aisne and the Marne, July 19.—(11 p. m.)—American troops attacked on a front of several kilometers southwest of Soissons late this evening. Fighting was still in progress at the hour of sailing, with the Americans advancing...

SAD CLOSING OF

(Continued from page one) Turner and Leslie streets, and was in charge of a small store. Later, he was unable to make his payments on the land and it was then taken from him. After that, he made a scant living by doing hauling and at the time of his death his only possessions were an old mule and a hack. There he had \$3.35 found in the house after he had been taken to the hospital to die and his wife to the insane asylum.

British Forces Advance London, July 20.—British forces, in capturing Metzereu yesterday, advanced on a front of more than two miles, Field Marshal Haig reported today. "As the result of yesterday's operations, the line in the Metzereu sector was advanced on a front of 4000 yards," the statement said.

GERMANS PLANS UPSET

The committee was told that the Germans appeared to have planned two offensives—one against the Americans and French, to be closely followed by one against the British. The ability of the British to start a strong counter offensive of their own now depends upon how far the Germans have been forced to withdraw men and materials from that sector to reinforce the lines where the French and Americans are attacking.

GERMAN INITIAL ADVANCE

War department officials admitted it is possible that the Germans' claim of 20,500 prisoners is true, but it was stated that if the Germans had taken this number they had done it in the very early stages of the fighting before the Franco-American counter attack. The committee was told that the country must prepare for heavy casualty lists which would probably be coming in for the next 30 days.

TEN FULL DIVISIONS

(Continued from page one) Incidentally March stated we have now shipped more than 1,200,000 troops abroad. The positions of the Illinois national guard division which trained at Camp Logan, Texas, was revealed as the British training sector and it was made known that a unit from that organiza-

ATTACK ON FLANK

The allied counter offensive is not an encircling movement. It is aimed at the chief supply line of the Germans running into Chateau-Thierry and was delivered on the flank because such a blow would cripple the Germans more than a push up from south of the Marne. A push from below would merely give them an exit without crippling their supply line.

MARCH'S GENERAL REVIEW

Last Monday the Germans began an attack which covered a sixty mile front. About one half of it was in the very hilly country between Chateau-Thierry and Rheims and the rest of it in the Champagne extending from Rheims to the Argonne. In the Champagne, the positions were held by the French and by one American division—the 49th—plus a regiment of colored troops from the 93rd.

GERMAN INITIAL ADVANCE

The penetration there was slight. The Champagne district was under charge of the French general, Gouraud, one of the most striking personalities of France. He wears five blouse stripes, has lost one arm, is a man of determined character, whom the French call "trois soldat"—every inch a soldier.

ATTACK ON FLANK

The allied counter offensive is not an encircling movement. It is aimed at the chief supply line of the Germans running into Chateau-Thierry and was delivered on the flank because such a blow would cripple the Germans more than a push up from south of the Marne. A push from below would merely give them an exit without crippling their supply line.

MARCH'S GENERAL REVIEW

Last Monday the Germans began an attack which covered a sixty mile front. About one half of it was in the very hilly country between Chateau-Thierry and Rheims and the rest of it in the Champagne extending from Rheims to the Argonne. In the Champagne, the positions were held by the French and by one American division—the 49th—plus a regiment of colored troops from the 93rd.

GERMAN INITIAL ADVANCE

The penetration there was slight. The Champagne district was under charge of the French general, Gouraud, one of the most striking personalities of France. He wears five blouse stripes, has lost one arm, is a man of determined character, whom the French call "trois soldat"—every inch a soldier.

ATTACK ON FLANK

The allied counter offensive is not an encircling movement. It is aimed at the chief supply line of the Germans running into Chateau-Thierry and was delivered on the flank because such a blow would cripple the Germans more than a push up from south of the Marne. A push from below would merely give them an exit without crippling their supply line.

MARCH'S GENERAL REVIEW

Last Monday the Germans began an attack which covered a sixty mile front. About one half of it was in the very hilly country between Chateau-Thierry and Rheims and the rest of it in the Champagne extending from Rheims to the Argonne. In the Champagne, the positions were held by the French and by one American division—the 49th—plus a regiment of colored troops from the 93rd.

GERMAN INITIAL ADVANCE

The penetration there was slight. The Champagne district was under charge of the French general, Gouraud, one of the most striking personalities of France. He wears five blouse stripes, has lost one arm, is a man of determined character, whom the French call "trois soldat"—every inch a soldier.

BEECHAM'S PILLS quickly help to strengthen the digestion, stimulate the liver, regulate the bowels and improve the health by working with nature.