



R. B. MARK
Secretary-Treasurer of Pacific Motors, Inc.



GRANT B. MARK
Vice President and Superintendent of Parts Department of Pacific Motor Co.

ROAD INFORMATION FOR AUTOISTS AND CAMPER

This bulletin contains general information concerning road conditions in or near the National Forests of Oregon and Washington, based on data furnished by the field men of the Forest Service.

TAKE NO CHANCES WITH FIRE.

DROP NO BURNING MATCHES OR TOBACCO—If you have a camp fire, build it away from logs, trees, or rotten wood. Scrape a clean strip around it, digging down to dirt. When you leave, PUT IT OUT. If no water is available use dirt.

OREGON ROADS.

Western Oregon

Willamette Valley-Cascade Mountain Wagon Road—Open and in fair condition between Foster and the summit of the Cascade mountains. The bridges along this route are dangerous and particular caution should be used in crossing them.
Hebo-Neskowin—Open and in permanent summer condition for entire route.
Tillamook-Willamina—Open in fair condition for entire route.
Dead Indian—Open between Pellean Bay and Ashland. Passable for autos.
Klamath Falls-Crater Lake—Open between Lake points. In poor condition between

between Klamath Falls and all Crater Klamath Falls and Fort Klamath. All roads to Crater Lake are now open.

Estacada-Cazadero—Open and in fair condition. Road is narrow and rough.

Crater Lake Road—Open and in good condition between Medford and Fort Klamath.

Willamette Road—Open between Eugene and a point several miles beyond Oak Ridge. Closed to all vehicles beyond this point.

Columbia River Highway—Open and in good condition, Portland to Cascade Locks. Closed for construction between Cascade Locks and Hood River. Cars may be shipped between Cascade Locks and Hood River by rail or boat on week days.

Eagle Creek public camp grounds is located 45 miles east of Portland on this road, which is paved the entire distance. Here the Forest Service maintains a free picnic and camp ground for recreation use. Tables, benches, fire places, running water, and other conveniences are available at this camp ground.
McKenzie Pass Road—Open and in good condition, Eugene to west boundary of the Cascade National Forest. Poor condition from west boundary of the Forest to Sisters.
Drain-Scottsburg—Open and in good condition, entire length.
Klamath Falls-Bend (via Fort Klamath)—Open and in fair condition entire length, some rough places.

EASTERN OREGON.

Sparta-East Eagle Park—Open and in good condition entire route.
Baker-Cornucopia—Open and in good condition.
Baker-Prairie City—Open and passable for all vehicles, but in poor condition.
Hardman-Spray—Open and passable for machines entire route.
Prineville-Mitchell—Passable between Ochoco Station and Wheeler-Crook county line. Open and in excellent condition county line to Beaver Ranger station.

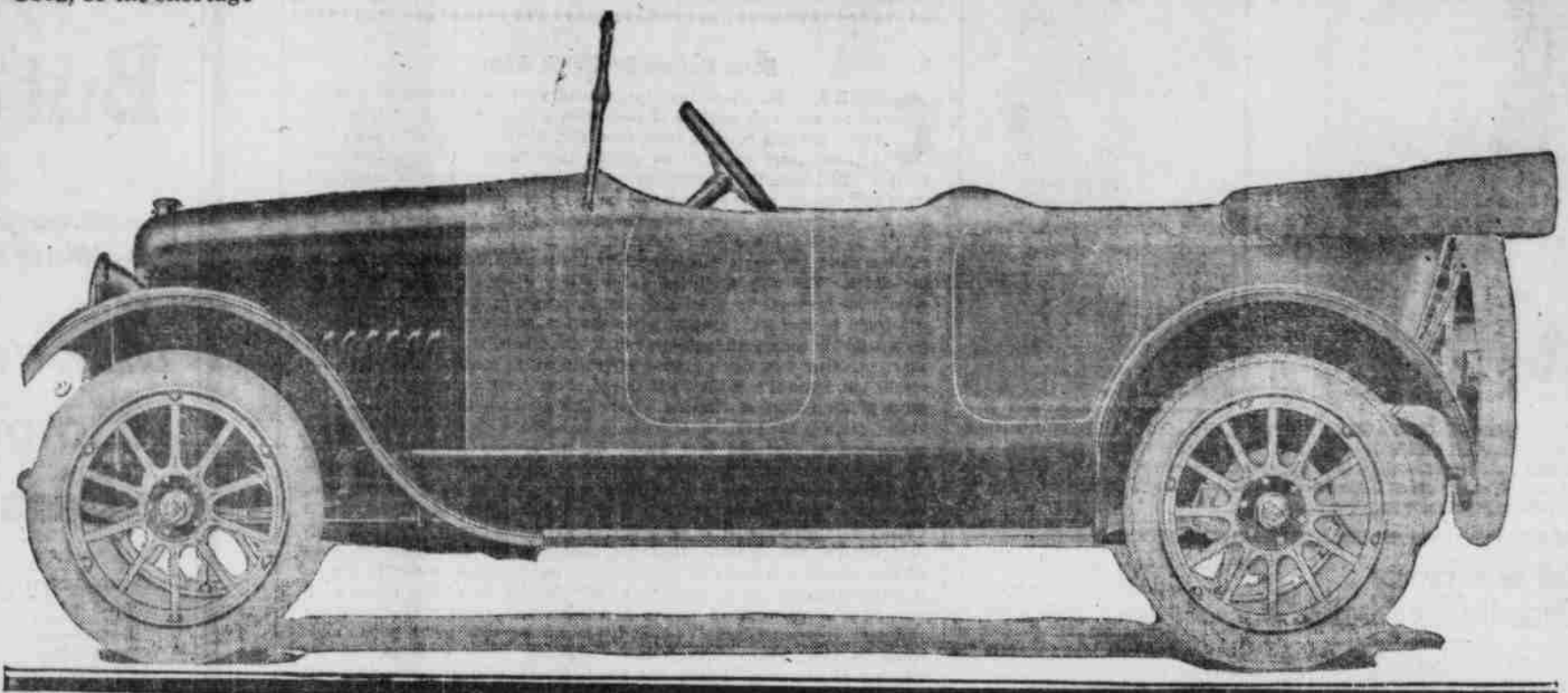
WASHINGTON ROADS.

Western Washington.
Cascade Scenic Highway—Open from coast towns to Sultan. Closed between Sultan and Tye for construction work. Detours not possible. Bridges are not finished across Miller River and the Skykomish River.
Sunset Highway—Open and in good

Lee L. Gilbert, Oregon distributor for the

ELGIN SIX

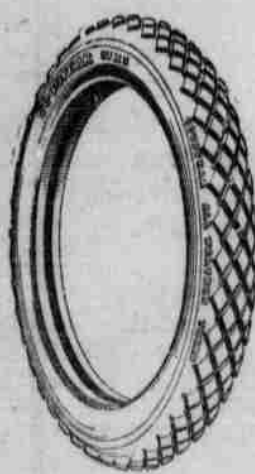
Was called to Seattle last week to meet the factory representatives. Neither the Elgin or any other factory hold out any promising hopes of being able to deliver any where near the quota allotted to the different States. Oregon's share of Elgin Sixes was seven hundred, but has been cut to Three Hundred and Twenty-five, and no assurance of receiving that number. Mr. Gilbert advises any who is contemplating buying a new or used Car to do so at once. There is nothing that will stop the big advance in either New or Used, or the shortage



Only two left out of the shipment received Tuesday. Better hurry if you want the CAR of the HOUR, that everyone is talking about. Ask any Elgin owner.

156 South Commercial Street. Phone 361 **Lee L. Gilbert,** Distributors for Oregon & Southwest Wash.

BUY WAR SAVINGS STAMPS



WHY NOT BUY THAT GOODYEAR TIRE TODAY

It means more mileage—They give better service—You will be better satisfied.



Phone 363 126 South Commercial

JUST ARRIVED

We have received the Maxwell Trucks and Samson Tractors and can now supply you.

Don't delay but come in at once or phone us your order, and we will reserve a Truck or Tractor for you.

The Fordson Tractors have left the factory and we expect them not later than August first.

The Valley Motor Co.

Front and State Streets

Geo. Vick, Manager

Salem Dealer Named Wholesale Distributor for All of Oregon

Pacific Motors Expands Northwest Distributor for Elgin, Now Under E. M. Mack as President. Takes Entire Pacific Coast Territory.

Coincident with the expansion of Pacific Motors, Inc., as distributors for the Elgin six on the entire Pacific coast, comes the announcement that Lee L. Gilbert has been made wholesale distributor for the Elgin for the entire state of Oregon and Clarke, Klickitat and Coville counties, Wash.

Mr. Gilbert formerly handled the Elgin in Portland, and is at present retail distributor for the counties of Marion, Polk, Linn, Yamhill, Tillamook and Benton. He will retain his retail business in these counties.

Announcement both of the expansion of Pacific Motors and of the appointment of Mr. Gilbert to his important new post, was made Friday by E. M. Mark of Seattle, the new president of Pacific Motors, Inc., during a brief visit to Portland. Accompanying him were R. B. Mark secretary-treasurer of the company, and Frank A. Mark, vice president.

E. M. Mark is one of the best known automobile men in the Pacific northwest. For the past four years he has been Oregon and Washington distributor for the Oakland and has done well with that line. In taking over the presidency of Pacific Motors, Inc., he accepted an opportunity to expand the business of that company as wholesale distributor for the Elgin in the states of Oregon, Washington, California, Nevada, Utah, Montana, Idaho and British Columbia.

This change in territory will become effective on July 1. It will make Pacific Motors, Inc., one of the largest wholesale distributors of automobiles in the United States.

N. Edwards, Jr., formerly Western sales manager of the Elgin Motor Car Corporation of Chicago, has been elected as vice-president of Pacific Motors, Inc., and will take charge of the branch house of the company in San Francisco on July 1. Mr. Edwards is

condition from Seattle to Cle Elum. Sixty miles out of Seattle on this highway is the Denny Creek camp grounds, where the Forest Service maintains a free camp and picnic grounds equipped for the use of the public.

Arlington-Darrington Road—Road is open and in good condition Arlington to Fortson. Fair condition Fortson to Darrington.
Olympic Highway—Open and in good condition between Olympia and Quinalt Lake. Open and in fair condition between Olympia and Discovery Bay. Good condition Fairholm to Mora and Forks.

EASTERN WASHINGTON.

State Road No. 4—Open and in fair condition between Republic and Tonasket.
State Road No. 10—Open and in fair condition between Entiat and Pateros. The road is getting rough in places.

Blewett Pass Highway—Open and in good condition Cle Elum to Wenatchee. This road is now in the best condition it has ever been. Several bridges and the heaviest grades on the old road on the Chelan side of the road have been eliminated and a large number of new turnouts built. No driver should have any difficulty in negotiating this road.

To Lizzie In France

Here comes our little friend to the fray,
Smiling Tin Lizzie, the Tinkering Tab!
After the Hun in her own dizzy way—
Rattling and rattling and getting the dub;
Dammed dirty dub of a lean, lousy Hun,
Once full of arrogance, now full of hate;
Wait till our little Tin Lizzie is done,
Smilin' Tin Lizzie, just hitting her gait!

Sure all her ancestors owed the same strain—
Joggled and jolted and jiggled like sin;
Ran with a racket that gave you a pain,
Rumbled and mumbled and tumbled within.
Slow-spoken Yank standing grim at the wheel,
After the goat of the germ-planting Boche,
Is he AT HOME? Well, he knows by the FEEL
Henry Ford's hopeful is happy, begosh!

Look at the rattling Daughter of Doom
Jumping the telegraph poles with a lurch!
Yow! Aint it natural? Just give her room
And she'll be scaling the spire of a church!
Hear that exhaust keeping keeping time to the trill
Ripped from the throat of the Browning gun hot,
Handing to Fritz cut his long-needed pill,
Is he enjoying it? YES—H IS NOT!

Smiling Tin Lizzie, America's pride!
Over and at 'em, girl, Queen of Detroit!
Hot as hell's hub the you may be inside,
Drill some cool openwork in the Kai's "shoit!"
Dammed dirty dub of a lean, lousy Hun,
Once full of arrogance, now full of hate,
Wait till our little Tin Lizzie is done—
Lizzie, the little toy wagon of fate!
—PRIVATE EDWARD MAIR,
U. S. Signal Corps.

now motoring overland from Chicago in an Elgin car to San Francisco.

J. S. Moltzer of Portland, will continue to be retail dealer for the Elgin in the Portland territory.

FERDINAND BRAUER DIES AT HIS HOME IN WEST WOODBURN.

Mr. F. A. Brauer died at his home in West Woodburn at 5 p. m., Tuesday, after a brief illness, having suffered a

stroke of paralysis at 9 o'clock the previous morning.

He was born in South Bend, Ind., April 3, 1842 and, crossed the plains with his parents in 1848. He spent most of his life in this vicinity, except about twenty-five years in Eastern Oregon.

He was a man of upright principles, ever ready to aid those in need. He was marshal of West Woodburn, a faithful Oddfellow and a member of Woodburn Lodge, I. O. F.

He leaves to mourn his demise two sisters, Mrs. Frank Buskey, of Woodburn, and Mrs. K. C. Chambers, of Portland, Mrs. Elsie Vincent, of West Woodburn, Mrs. Theresa Bierward and Mrs. Etta McGrath of Woodburn, are nieces. —Woodburn Independent.

SUCCESSFUL RED CROSS PICNIC HELD AT ST. PAUL.

The picnic for the Red Cross at St. Paul was a great success. The committee wishes to thank all who kindly helped—the band, the speakers, the singers, the baseball players, and all those who so generously donated the 18 gallons of ice cream on which \$95 was realized, also to the four girls who sold chances on the pig, lamb, and cake. The pig, given by Mr. J. N. McKay, was won by Dr. Donnelly of Mt. Angel. The lamb, given by Mr. J. E. Smith, was won by Mr. August Hueckstein, Salem's popular postmaster, who then auctioned it off, the highest bidder, Mr. Bernard Wolf, paying \$16. This was also kindly turned into the Red Cross. The cake, made by Miss Edna Davidson, was won by Grandpa Davidson. The speaking by Mr. Hueckstein and Frank Davey, from Salem, and Mayor Young of Mt. Angel, was very interesting and appreciated by all. The Red Cross Auxiliary netted \$250 from the proceeds of this picnic.—Independent.

JOURNAL WANT ADS PAY

GATES HALF-SOLE TIRES

Cost 1/2 As Much

Both Use Gates Half-Sole Tires.

The small car and the limousine—Gates Half-Soles appeal to the owners of both alike.

Their appeal lies in Service—long mileage—freedom from trouble. These are valuable to the merchant with prompt deliveries to make—equally valuable to the professional man—and to the pleasure party for which an untimely puncture may mar a perfect day.

They cost only one-half as much as other tires and are guaranteed for thousands of miles of puncture-proof service.

Look into this—now!

S. S. Montgomery

177 South Commercial Street.

Phone 428

