

The
FRANKLIN CAR
See Its Many Thrift Features

A MAN once remarked that the faculty of judgment cannot come into play without mature experience.

One reason, perhaps, why the motorist of experience looks upon the Franklin as his *ultimate car*.

Now is a good time to pass judgment *yourself* on the Basic Principles of Franklin construction.

See how Franklin Scientific Light Weight has developed the *most practical, economical and efficient fine car* in America.

How Direct Air Cooling does away with the 177 complicated parts of plumbing that make up a water-cooling system. How *freezing* in winter is *avoided*—and *overheating* in summer—and the *expense* that goes with both.

See just why full-elliptic springs and Franklin resiliency are essential to *real* motor car comfort.

How Franklin simplicity, light weight, and quality of material and workmanship have made the Franklin the *easiest rolling car* built.

These are the Franklin basic principles that have started the trend towards the Franklin since the cost of gasoline and tires went up.

To know how the Franklin meets war conditions—you must get *posted*. See the Franklin *today*.

LEE L. GILBERT, Distributor
156 S. Commercial Street Phone 361 Salem, Oregon

DISTRIBUTING CENTER IS MADE OF SALEM

Lee L. Gilbert Will Distribute Franklin, Elgin Six and Harroun from Here

As the result of an important business transaction consummated last week by Lee L. Gilbert, one of the most prominent automobile men of this city, Salem is to be the distributing center for the Willamette valley of the Franklin, Elgin Six and Harroun motor cars, as well as the Federal Commercial Vehicles and Trucks.

For some time Mr. Gilbert who came to Salem after a broad and successful experience with a number of the largest automobile establishments in Portland has been breaking records in selling Elgin and Harroun cars in this field.

Pleased with Salem, and encouraged with the business outlook in this field, Mr. Gilbert, last week concluded a deal with J. C. Braly, Franklin distributor for the state of Oregon, whereby Mr. Gilbert takes over the selling privileges on that favorite high class car in Salem and contiguous territory and he also convinced the officials of the Pacific KieselKar branch at Portland, that he was the right man to dispense the dependable Federal truck in this same place.

With contracts covering the Elgin Franklin, Harroun and Federal lines tucked away in his pocket Mr. Gilbert is now able to offer the discriminating motor car fanciers and buyers of this district a broad line to choose from and he has cars of recognized worth and reputation.

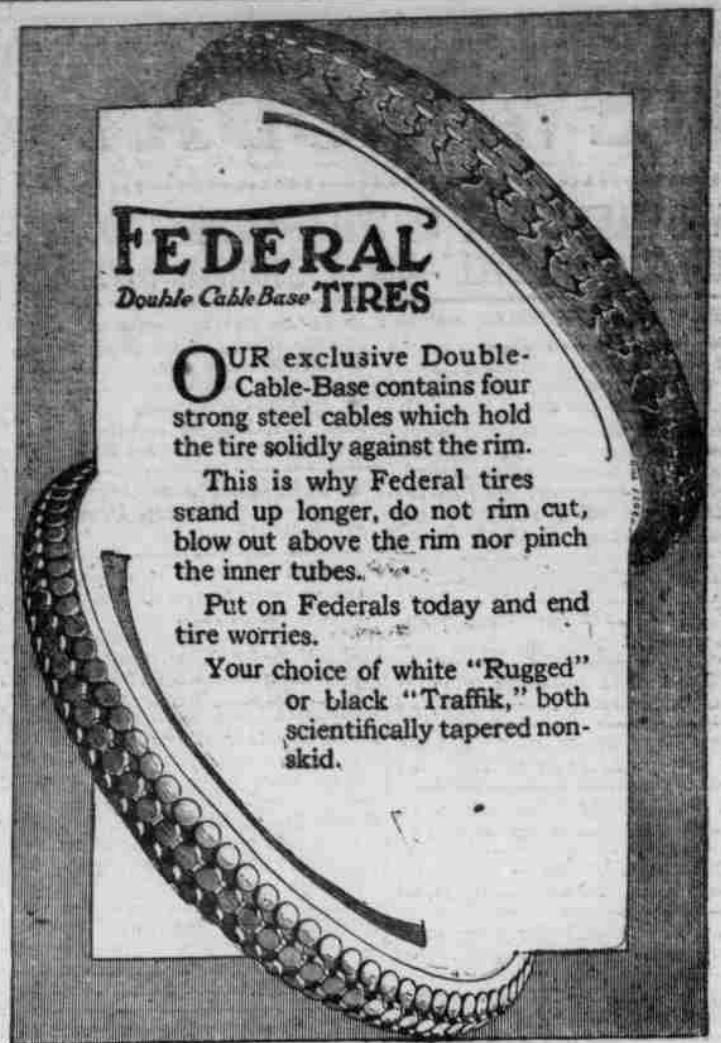
Because of its many exclusive features, its economy of operation and known excellence of construction and performance the Franklin machine has long been a distinct favorite among the veteran motorists of Oregon.

The economy and endurance tests conducted by Franklin owners during the past few years have startled the entire motor car industry and have resulted in the rush of so many urgent orders from all points of the country that the Franklin officials have been obliged to increase greatly the volume of output at the big factories in Syracuse, New York.

The Franklin prices in vogue this year range from \$2,200 for the roadster through to \$3,200 for the magnificently appointed enclosed jobs.

The standard touring cars is now quoted at \$2,250, same price as in 1914.

No business man who has ever investigated the commercial car market needs any introduction to the Federal motor trucks, for no make of machine occupies a more enviable reputation among the users of Oregon. Ample evidence of the unqualified success of the Federal



FEDERAL
Double Cable Base TIRES

OUR exclusive Double-Cable-Base contains four strong steel cables which hold the tire solidly against the rim.

This is why Federal tires stand up longer, do not rim cut, blow out above the rim nor pinch the inner tubes.

Put on Federals today and end tire worries.

Your choice of white "Rugged" or black "Traffik," both scientifically tapered non-skid.

VICK BROS.

260 North High Street

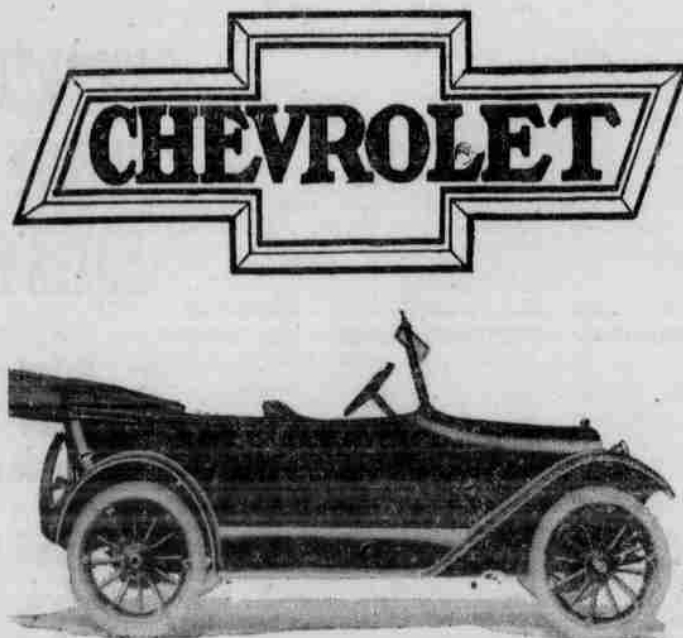
Phone 1995

at work is furnished in the number of 150 South Commercial street, near the "repeat orders" which are noticed on corner of State street yesterday, where he has established one of the finest

automobile show rooms in the state outside of Portland. By reason of its style and beauty the Elgin Six satisfies even the most critical eye and its road ability, sturdiness, and instant responsiveness to the driver's touch does the rest of the work. The Elgin is not only different but it is better and the public is certain to appreciate its superior qualities more and more as time runs along.

Those who have been lucky enough to ride in the latest samples of the famous Harroun line to reach this field testify enthusiastically that this creation of that notable racing driver is a "Bear Cat" in fact and action as well as by name. The Harroun motor is equipped with 43 horse power distributed between four cylinders of the overhead valve type and the sensation created during

(Continued on page seven)



Steel, Iron, Leather and other material entering into the construction of an Automobile, are dumb things. It is necessary for men to fashion these things in the right spirit to make them of any value when touched and moulded by men the essence of life is infused.

It is the method of building---it is the interpretation of these ideals that count for the most.

The manufacturer of Chevrolet Cars feels his responsibility to the public and never forgets the public---THAT'S WHY YOU GET MORE VALUE IN CHEVROLET CARS THAN THE PURCHASE PRICE---THAT'S WHY THE CHEVROLET CAR HAS MADE GOOD.

PRICE \$765 F. O. B. SALEM (WarTax Added.)

Salem Automobile Co.

F. G. DELANO

PHONE 79

246 STATE STREET, SALEM, OREGON

A. I. EOFF

SIX PER CENT LIMITATION

(Continued from page one)

estates being settled up, among them the Jack Rogers estate, will run the increase in the inheritance tax collections up to approximately \$350,000, according to the state treasurer's estimates.

Adding this increase of fees to the additional amount that may be raised under the six per cent limitation gives a total of \$700,000, which the next legislature will have for appropriation in excess of the amount available to the 1917 session.

The next legislature will have a number of deficiency appropriations to take care of, as the emergency board already has authorized deficiencies of approximately \$300,000 and the state penitentiary is preparing to ask for over \$50,000, while the Oregon state hospital is expected to run short of funds before the end of the year and need relief from the emergency board.

However, of the \$300,000 already appropriated by the emergency board, \$250,000 is for the state military police, and if the one mill tax for the emergency war fund is approved it is expected that this \$250,000 will be paid from that tax.

Regardless of whether that is done, it is pointed out that the last legislature made a number of appropriations which undoubtedly can be easily eliminated next time. Among them are the following: Addition to the receiving hospital at the Oregon state hospital, \$80,000; Chaoupoeg memorial building, \$50,000; tourist advertising, \$45,000; hospital for the Oregon Soldiers' Home, \$22,950; dormitory for the state institution for the feeble minded, \$10,000; fish hatcheries, \$24,000; state flax, \$10,500; Oregon national guard, \$179,000; Oregon naval militia, \$15,000, making a total of \$572,350.

As a summary, the next legislature will have approximately the following sums to meet the deficiency appropriations and the added cost of maintaining the state institutions, assuming that the war needs will be taken care of by means of the millage tax: Appropriations not necessary again \$372,350; increase under six per cent limitation \$350,000; increase in inheritance tax and fees \$350,000; total \$1,072,350.

With the above sum in sight, persons who are intimately familiar with state affairs point out that the next legislature will not be embarrassed for lack of funds to meet the necessary requirements of the state government.

Bishop Killed Woman and Committed Suicide

White Salmon, Wash., June 1.—The coroner's jury was expected today to return a verdict of murder and suicide

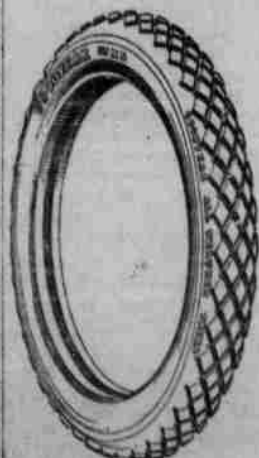
following its investigation of the deaths of Bert Bishop and Mrs. Chester T. Dewey. The bodies were found along the roadside. Bishop's arm was around the young woman. The other hand clasped a revolver.

Mrs. Dewey's husband recently was commissioned a lieutenant in the army. She was 16 when married and 21 at death. She formerly worked as book-keeper in Bishop's office. He was construction superintendent for the Pacific Light and Power. A widow and three children survive Bishop, who was 35.

Mrs. Dewey is survived by two small sons.

Lieutenant Dewey recently left Camp Lewis en route east, and may now be en route to France to join the overseas forces.

Bishop and Mrs. Dewey attracted attention by their friendship. They frequently took long fishing trips and hikes into neighboring forests together. When Lieutenant Dewey recently came here to see his wife before departing for France, she was gone on a trip with Bishop.



BRING YOUR TIRE WORK TO MEN WHO KNOWS

Let us look over your Tires This Service Is Free

VULCANIZING, RETREADING, GOODYEAR TIRES



126 South Commercial Street