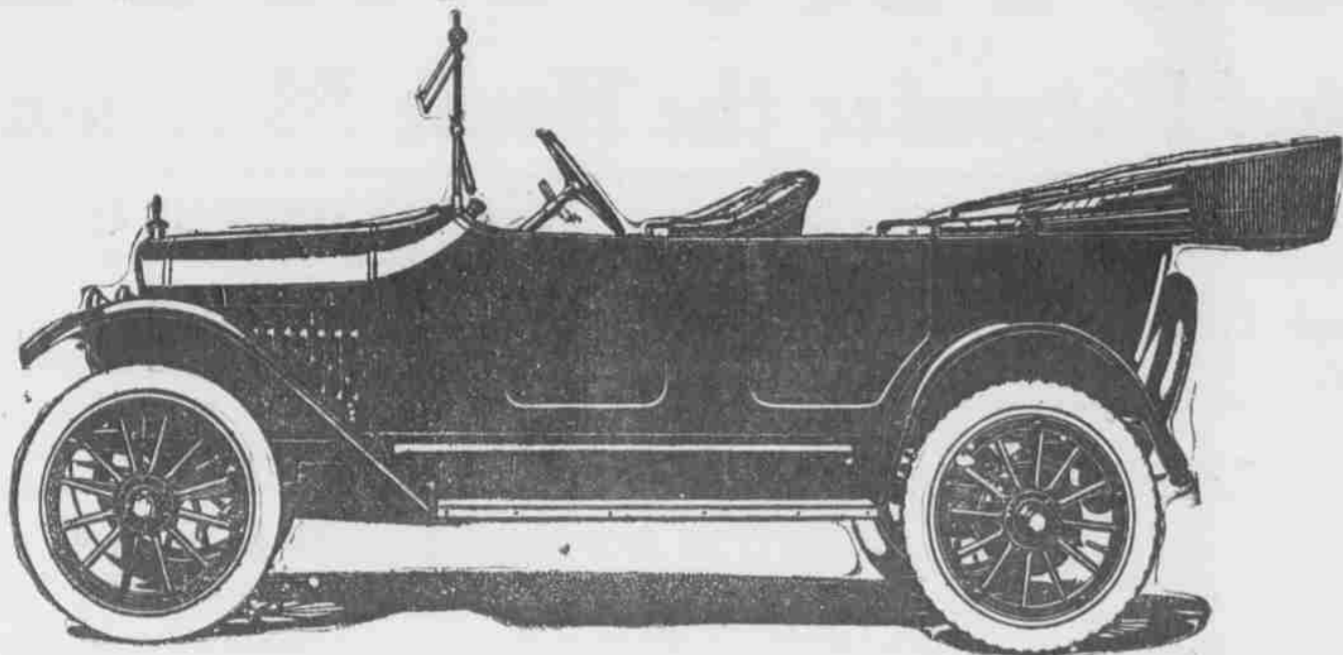


# Maxwell New Price \$685 F. O. B. Salem



## Increased Production and Standardized Manufacturing Permit Remarkable Low Prices

THE prices of Maxwell Cars are again reduced--\$685 for the touring car and \$670 for the roadster--effective July 1, 1916. Only the price is changed--not the car.

Greatly increased production reduces our manufacturing cost per car.

Standardized manufacturing--only one Maxwell chassis--makes possible further production economy.

By reducing the price we also reduce the selling expense. Thus the Maxwell owner gets the most actual intrinsic value for his expenditure.

Bear in mind that the Maxwell is the World's Champion Endurance Car. Its genuine through-and-through merit has been established beyond question or doubt.

The Maxwell has lowered many records for gasoline and oil consumption. It is everywhere recognized as one of the most economical cars to maintain.

These facts, considered along with the remarkably low price now quoted, make the Maxwell the one big automobile value of all time.

## Halvorsen & Burns

Ferry and High Street

Distributors for Marion and Polk Counties

### WHAT THE MAXWELL PRICE INCLUDES

Long stroke, high speed, four cylinder motor; 20 to 25 miles to the gallon of gasoline (average).

Irreversible steering gear; automatic motor lubrication by splash and pump; 500 to 1,000 miles to gallon of oil.

Thermo-siphon cooling. A running-in-oil clutch, so smooth as to make the driving of a novice as free from gear clashing as that of a seasoned driver.

Tall, narrow, racing type radiator, Maxwell made. Maxwell made axles--I beam front and semi floating rear; heat treated alloyed steel.

Gasoline tank in fowl; short, accessible gas line to carburetor. Maxwell made stream line body, well finished in every detail. Deep, comfortable upholstery.

30x3 1-2 tires all around, non-skid on rear; average life from 8,000 to 10,000 miles. Demountable rims. Tire carrier at rear, with extra rim.

Substantial, Maxwell made crowned fenders and linoleum covered running boards. Electric starter, electric lights, electric horn.

High tension Magneto, an independent source of ignition. One man top with quick adjustable, storm proof curtains.

Rain vision, adjustable, ventilating windshield. High grade speedometer. The Maxwell touring car is a full five passenger car. Every Maxwell model seats comfortably the number of passengers which it is rated to carry.

Compare these Maxwell features with those of cars selling at higher prices.

### Overland-Willeys Co. Take Over Leavitt Agency

Arrangements have been completed for the purchase of the entire holdings of J. W. Leavitt & Company, distributors of Overland automobiles and owners of a chain of branches on the Pacific Coast, by the Willy-Overland, Inc., of Toledo.

The Willy-Overland, Inc., will in the future operate its own branches on the Pacific Coast, giving service to Overland owners direct from factory to owner. The operating company in California will be known as the Willy-Overland of California and in the Northwest the operating company will be known as the Overland-Pacific, Inc.

The price paid by the Willy-Overland, Inc., for the holdings of J. W. Leavitt & Company was in the neighborhood of one million dollars. General officers of the Willy-Overland, Inc., including Mr. Royal E. Scott, secretary and chief counsel, Mr. J. H. McDuffee, assistant sales manager, and Mr. W. E. Tigges, comptroller, are now on the coast arranging details of the transfer which will take place on July 1st.

The Leavitt Company has been in business on the Pacific Coast nearly a quarter of a century. Since they entered the distribution of Overland automobiles, their growth has been phenomenal. In 1909 they had only one small store located in San Francisco. Three times in the last seven years they have been compelled to enlarge their quarters in San Francisco, and have opened nine Pacific Coast branches, including Spokane, Seattle, Portland, Sacramento, Oakland, Fresno, Los Angeles, Pasadena and San Diego.

Last year Pacific Coast purchasers bought over nine thousand Overland cars running the aggregate business of the Leavitt Company up to the seven million dollar mark, and making them the largest distributors of automobiles in the world.

The Overland Company is making extensive preparations to enlarge and improve its service to the twenty-five thousand owners of Overland and Willy Knight cars on the Pacific Coast. Seven new buildings completely equipped with the most improved devices for rendering service to Overland owners are in process of construction. These new service buildings will be located at Seattle, Sacramento, San Francisco, Los Angeles, Pasadena, Hollywood and Spokane.

The street locations of these branches in the different cities mentioned were selected with the view to the convenience of owners of Overland cars, rather than on account of a low cost of real estate. As a matter of fact, no expense is being spared by the Overland Company either in the cost of the land or in the construction of the service buildings.

The principal purpose of the Overland Company in buying out the Leavitt Company is to extend the long arm of Overland Service direct from factory to owner.

In taking over the Leavitt Company the Overland Company will retain practically the entire Leavitt organization. A. D. Plughoff, formerly vice president and general manager of the Leavitt Company, and considered one of the three or four best posted men in the automobile industry, will be managing director of both the Willy-Overland of California and the Overland-Pacific Inc.

### Under Arrest For Exploding Bomb On Car

Oakland, Cal., July 1.—Police of Richmond today arrested S. V. Charley and William Lwakso on suspicion of having exploded a bomb which partially wrecked the smoking car of a Southern Pacific train at the Sixteenth street station here last night, injuring 13 men and women. John H. Wilson of San Francisco sustained possibly fatal wounds in the blast. Charley is said to have been formerly employed at the Giant Powder company. Detectives said the suspects fought against arrest, one drawing a knife.

### Actors Act an Arctic Scene with Unusual Realism; Real Cold



There is frigid reality and master acting in that part of the story of the William Fox photodrama, "Blazing Love," which depicts the fatal end of an Arctic exploration. The proper scenery was secured at Saranac Lake, New York, when the lake was frozen, and there was real frigidly in the air besides.

Arthur Graham (George Selby), betrothed to Margaret Walsh (Virginia Pearson), is lost on the ice with his companion, Russell Barridan (Frank Goldsmith). A third companion dies, and Graham suggests that the body be buried between the ice. Barridan, the villain of the play, suggests that it be thrown to the dogs, so that the animals may subsist and carry them on to safety. Graham refuses, and buries the body. At Ye Liberty, Sunday and Monday.



HAROLD LOCKWOOD in "THE COME BACK." Appearing at the Oregon Sunday and Monday.

**AUTO LAMPS**  
STORAGE BATTERY CHARGING SET  
**LOCKWOOD**  
216 N. Commercial St.

SUNDAY AND MONDAY  
William Fox presents  
VIRGINIA PEARSON, in  
**BLAZING LOVE**  
By Bernard Chapin  
PATHE WEEKLY  
**YE LIBERTY**

Wallace Reid, the popular young star of the Jesse L. Lasky Feature Play company, appears in the leading role in support of Geraldine Farrar in the Lasky production, "Maria Rosa," which will be shown on Paramount night at the Ye Liberty on Tuesday, Wednesday and Thursday. Mr. Reid is remembered by all motion picture enthusiasts for his wonderful performance as Don Jose in

Miss Farrar's first photoplay, "Carmen." He also has appeared in the Lasky pictures, "The Chorus Lady" and as co-star with Cleo Ridgely in "The Golden Chance" and "The Love Mask." He appeared with Mae Murray in "To Have and To Hold." Maria Rosa, a Paramount picture, is Miss Farrar's third Lasky photoplay.

The others are "Carmen" and "Temptation."

### TRYOUT FOR SALEM MAN

Keene, pitcher for the Salem team of the Inter-City league, will be given a trial by Portland on its next trip home. The youngster has a great fast ball and as he is a college man, is just

the type Walt McCredie is looking for. He plans on entering Oregon Agricultural College this fall, and if he fails to make good with the Mackmen will certainly fill Binky Williams' shoes for the Aggies next spring. All of this Hugo Besick at the University of Oregon will regret. Keene already has had four years of high school at the Capital City besides one year in an Eastern college.—Oregonian.

## Extra Sunday Monday OREGON Sunday Monday Extra

# Charles Chaplin in "Police"

His Latest Essanay Comedy---A Scream



## "The Come Back"

A BEAUTIFUL STORY OF THE NORTH AND SOCIETY

### Vaudeville

LORRAINE & LORRAINE  
HARMONY SINGERS AND ENTERTAINERS

Fred Forsyth in FAN TAN  
HELD OVER 4 MORE DAYS--THE TALK OF SALEM.

STARTING TUESDAY--FORD STERLING IN "THE SNOW CURE" 3 REEL KEYSTONE.

## Musical Comedy

MONDAY AND TUESDAY, JULY 3-4

20 PEOPLE --- Mostly 20 PRETTY GIRLS 20

SHOWS THAT ARE DIFFERENT HIGH-CLASS MUSICAL PRODUCTION

Two Days Only **BLIGN THEATRE** Matinee Evening

## VAUDEVILLE DIRECT FROM HIPPODROME PORTLAND

THE BIGGEST SHOW IN TOWN.

Les Keliors --- Comedy Circus Novelty

Musical KRELLES --- VIOLIN, VOICE, CELLO and PIANO

Graham & Randall IN A COMEDY OF SENSIBLE NONSENSE, "HOW IGNATIUS GOT PNEUMONIA."

Don't Miss It

**BLIGN THEATRE** TOMORROW SUNDAY

THE EMINENT SCREEN STAR **KING BAGGOT** IN "THE MAN FROM NOWHERE" THE STORY OF A MAN CONVICTED ON CIRCUMSTANTIAL EVIDENCE

# CHARLES CHAPLIN SIGN OF GOOD SHOWS BLIGN THEATRE WHERE EVERYBODY GOES Sunday-Monday In His Very best BLIGH Theatre