

Eleda Lednem Tells of the Trend in Millinery

Probably in the whole discussion of woman's wear none proves of more interest than that of feminine headgear, and no feature changes as often. We have come to realize that the hat must suit the hat—not the individual the hat. The woman who knows, knows just a little more than the woman who isn't as well informed that becomingness and suitability are the keywords in hatdom, regardless of what the latest eccentricity may be.

Exaggerated sizes are not thought of, though many of the cheap ones incline toward picturesqueness. What we term wide now have been considered medium in past days. Anything measuring more than ten inches in diameter is considered "large." Small hats are shown in great diversity.

The general fashion trend is toward the round, draped or elongated turban. Many adaptations of tricornes are shown in ample variety. The flat trimmed sailor with variations of brim and crown portray a wide range of new ideas. The newest of these have the brim unstiffened, causing it to droop in undulating lines.

Materials for fall include felt, suede, velvet, plushes and silks. Black velvet hats are shown in combination with felt, satin or suede in many combinations. Hatters plush, because of its lightness, bids fair to have an inning in both large and small shapes.

Fur hats, Hudson seal, Persian lamb, caracul, ermine, mole and krimmer are in strong demand, especially in the toques and cossack turbans.

The "Bergaglieri" is quite the rage. The millinery models, though different from the original, are easily recognized. The Italian ones are made of black velvet with the brim turned up on the left side and a large pom pom of coque on the right side. A model of fawn silk corduroy has an ornament on the top of the crown composed of violet velvet. The crown is banded with the same velvet. A scarf veil is worn with this hat, having velvet pestilles and edged with velvet.

For evening wear the medium wide transparent rim of gold or silver crowned with velvet and trimmed with metal flowers are stunning.

Sport hats of felt in any shade you can imagine have soft drooping brims and are enjoying an unprecedented success.

A new idea on some of the hats is to have the brim draped with veiling, the fullness of which is drawn together on one side and caught by a beaded ornament with velvet rose with buds.

Fruits made of worsted threads brilliantly colored, accompanied with green leaves, are among the novelties shown. Wings, particularly spade ones, pasted feather breasts, accompanied by spade wings, black and colored motifs embroidered into the crowns and brims of velvet hats, clipped ostrich pom poms, flowers of ostrich fibres, whip fantasies and aigrettes, ostrich quills with the fringed with silver metal, are noteworthy items in the new millinery creation.

Moiré and faille ribbons, also two-toned ribbons in satin and velvet, adorn the small hats in flaring and tailor-made bows.

A reflection of the new modes is seen in the crowns and rims composed of ribbon.

A large canvas of black velvet has a wide velvet flange. The crown is encircled with a band of white soutache and tipped with a jet tassel.

Clever but simple is an army turban of velvet applied with beads. A smart feather fancy directly in front shoots outward.

Of deep French blue velvet, crowned with deep hatters plush, is a hat with a unique trimming idea consisting of shaded blue butterflies mounted on black quill stems, poised on each side of the front of the hat.

Colonial in shape is a hat of gray velvet outlined with krimmer. Sprays of paradise are placed at the brim's edge at each side, not interfering with the band of blue velvet drawn around the crown and caught around the front with a steel buckle.

A white beaver hat claimed three scalloped sections for its crown. These are bound around the edge with narrow white faille ribbon. A diminutive Mercury wing of white beads tops the center of the crown.

An irregular brimmed sailor of deep wine-colored velvet acknowledges its kinship to a model of last summer by the way a flat bird, "which looks as if it flew from I know not where," is posed on the top of the crown.

One especially striking model is made of black taffeta stitched in white. The brim is much larger at the left side and is worn tilted upward.

A large picturesque shape has a crown of layer upon layer of blue silk fringe and a flirtatious curled brim of blue velvet. Small wings and a standard of gold cord accomplish this stunning hat.

Blue serge hats have begun to appear. Guileless of trimming save a braid ornament and bound braid, this little hat is not ashamed of its plebian origin.

A hat of striking lines, black faille top and brim and turquoise blue felt facing is edged with white wool. And two wool pom poms afford the chic of this hat. Hats of kanne, peluche, a new fabric combining the qualities of pane velvet and hatters plush, are delightfully trimmed with spade wings, large roses or beaded tassels.

A model which has a brim turned up and then down has a crown of pame peluche and a double drooping brim of satin bound on the edge with a heavy black cord.

Screening the face.

A made veil with an elastic top which helps it fit trimly around the hat is used by women of fashion. Always chic and always in good taste is the faille mesh veiling which comes in different colors. Chenille is generally becoming and comes in great assortment of styles.

Bold patterns are used on the majority of the best veils. Black, flesh, sand, taupe, navy and white veils are the colors most used.

State of Ohio, City of Toledo, ss. Lucas County.

Frank J. Cheney makes oath that he is senior partner of the firm of F. J. Cheney & Co., doing business in the City of Toledo, County and State aforesaid, and that said firm will pay the sum of ONE HUNDRED DOLLARS for each and every case of Catarrh that cannot be cured by the use of HALL'S CATARRH CURE.

FRANK J. CHENEY.

Sworn to before me and subscribed in my presence, this 6th day of December, A. D. 1906.

A. W. GLEASON, Notary Public.

Hall's Catarrh Cure is taken internally and acts directly upon the blood and mucous surfaces of the system. Send for testimonials, free.

F. J. CHENEY & CO., Toledo, O.

Sold by all Druggists, etc.

Take Hall's Family Pills for constipation.

COMMUNITY SILVER

The Family Plate

Wm. Gahlsdorf
THE STORE OF HOUSEWARES
135 N. Liberty Street

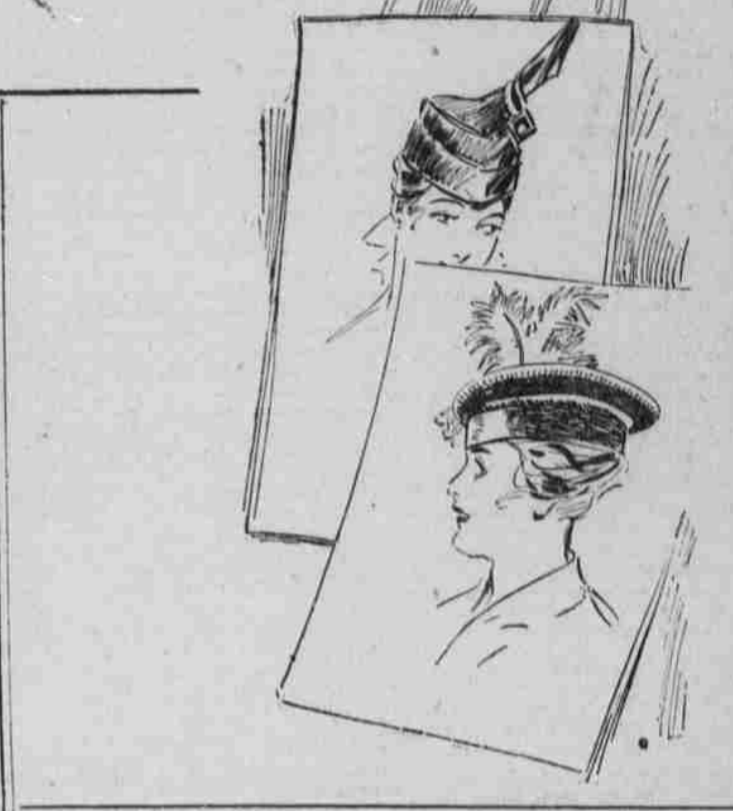
Molaset

Front Laced Corsets
Special Fittings
Saturday Mornings

For the School Misses, by our Expert Corsetiere.

A properly fitted Corset is the foundation of dress. You can feel comfortable and be stylish too. Let our corsetiere select the right model for your particular figure.

The Style Shop
MRS. B. T. SWART
115 Masonic Temple.



***** our idea of no way for the consul to refer to the dearth of Brazilian bus bands. *****

WASHINGTON WIGWAGS

By George Martin.

***** Mr. Consul Dumont's report from Florence, Italy, that fast motors have eaten up so much of the Bologna road that it has to be rebuilt would indicate that the Italian automobile is no vegetarian. *****

Mr. Attache Baker at Petrograd could have saved 491 of the 500 words he used in reporting the "pitch and tar" situation in Russia by simply saying: "When the Germans pitch in the Russians tar out."

***** His Occupation. *****

"John Jones, the patient who came in a little while ago," said the attendant in the out-department, "didn't give his occupation."

"What was the nature of his trouble?" asked the resident physician.

"Injury at the base of the spine," "Put him down as book agent."

***** Mr. Consul Gottschalk reports a great demand among the women of Brazil for "dress-hooking contrivances." That is, *****

Latest Fall Styles IN Millinery

You will find my shop headquarters for the very latest shapes and trimmings. My trimmer recently from the East can give you what is new and suit each individual case.

Mrs. H. P. Stith
124 North Liberty Street

Francis Xavier Matthieu Estate. Notice is hereby given that the undersigned, as executor of the estate of Francis Xavier Matthieu deceased, has filed his final account in the county court of the State of Oregon for Multnomah county, and that on Monday the 27 day of September, 1915, at the hour of 10 o'clock in the forenoon of said day and the court room of said court has been appointed by said Court as the time and place for the hearing of objections thereto and the settlement thereof.

Dated and first published August 28, 1915.

Stephen Alfred Matthieu, Executor.
John Van Zante, Attorney.
314 Spaulding Bldg., Portland, Oregon. Sept 25.

CHIC MILLINERY CREATION FROM PARIS



Black velvet hat, sailor shaped with a large puff of velvet in the front and a string of silver beads around it. The new style bangs are curled instead of being straight.

The French Shop

165 N. Liberty Street

Designer and makers of ladies' and misses' fine tailored and trimmed hats.

Will open in our new location, 359 State St.,
September 20

This building is being entirely remodeled and will be one of the most modern Millinery establishments in the city.



TRY A JOURNAL CLASSIFIED AD —THEY ARE BUSINESS GETTERS— ONE CENT A WORD.

Present Day Jewelry and Accessories

I Always Have a Complete Stock of Diamonds, Cut Glass, and Watches at the most moderate prices. All kinds of first class watch and jewelry repairing.

C. T. Pomeroy
125 N. Commercial Street

Try a Journal Classified Ad.