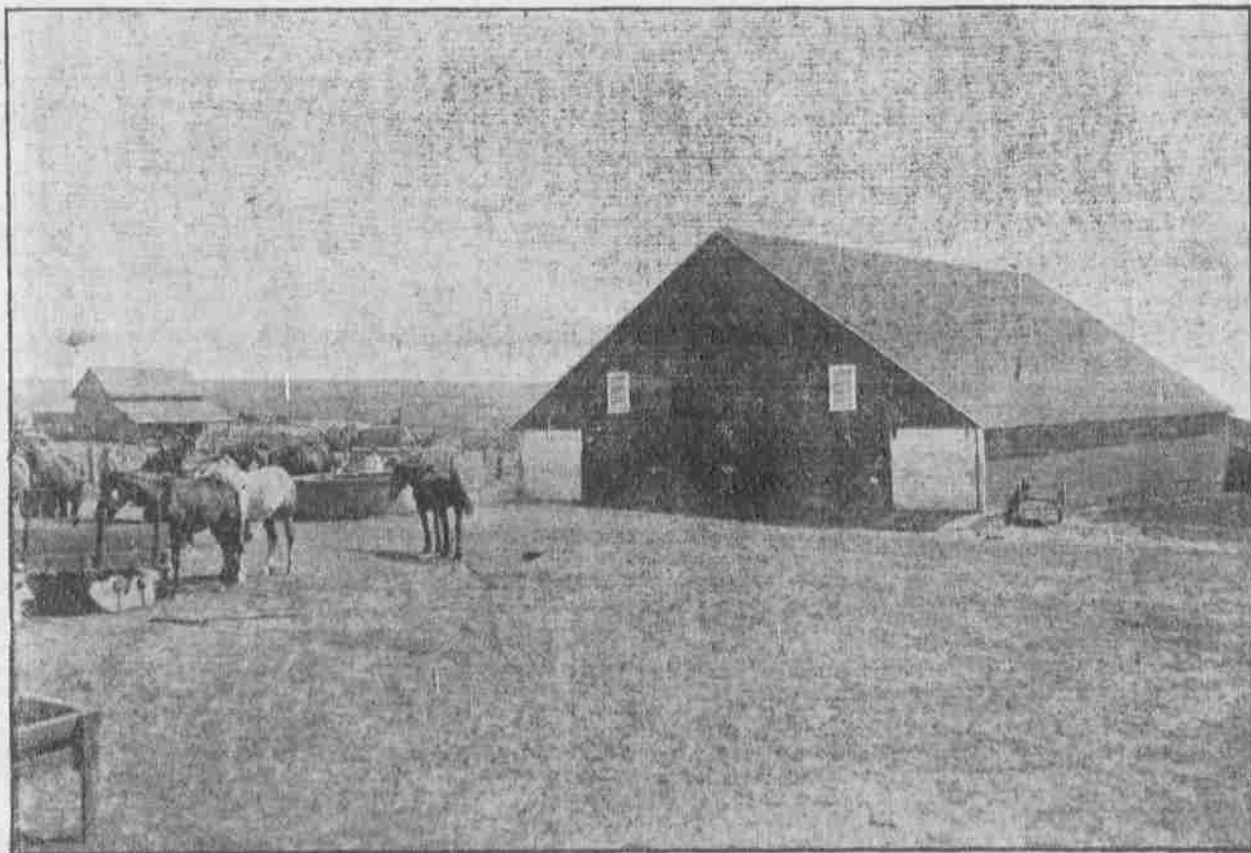


The Daily Capital Journal

SALEM, OREGON

Home and Farm Magazine Section

SATURDAY, NOVEMBER 14, 1914.



A Type of Barn Yard in the Better Class of Eastern Oregon and Eastern Washington Farms.

AS WATER is being introduced on the plains of Eastern Oregon and Eastern Washington, these lands are growing more in favor with the rancher. At the recent Oregon State Fair at Salem, the most remarkable feature was the splendid showing from eastern counties where agriculture and horticulture was supposed to be undeveloped. This was the first fair at which these counties had contributed large exhibits. This was owing to the method of distributing prizes. Instead of being compelled to compete with the fertile coast counties for state prizes, the Eastern Oregon counties were in a section by themselves for which special prizes were offered.

In the above picture what appears to be a barren plain in the distance is a magnificent field of grain, sweeping to the horizon. A concrete fountain is seen to the left of the barn. The photograph was taken in Sherman County, Oregon.