

SALE COMMENCES AT
9 a. m.

Saturday Specials

HUCK TOWELS
Splendid quality, 18x38
8c each Saturday only

One large assortment
**TAFFETA
SILKS**
In all colors, suitable for
Holiday Fancy Work
One-half Price

**WHITE VOILE
WAISTS**
Prettily embroidered
98c each
These are for Saturday only

STOCKTON'S All Wool Men's Clothing

has the name of being
**RELIABLE, SMART,
MASTER TAILORED**
of the best and most
popular fabrics. You
will receive full value
for every dollar you in-
vest in one of our suits
or overcoats. They are
built to stand hard wear
and yet retain their
shapeliness and fine ap-
pearance. The regular
prices—

\$10.00 to \$30.00
for Suits.
OVERCOATS moder-
ately priced. We call
special attention to the
wonderful \$15 values in
our Commercial street
window.



Stockton

A TRAVESTY ON JUSTICE
Portland, Or., Nov. 13.—Con-
victed early this week on a
charge of usury, E. E. Ware,
manager of the State Security
company, was fined \$500 in
district court here today and was
given until next Thursday to
file a motion for appeal.

**BOARD SLICES OFF
ANOTHER \$50,000**

**Showing Appropriations for
Institutions and What They
Are For**

The policy of retrenchment, man-
ifested by the state board of control upon
the occasion of its first session, Tues-
day afternoon, for the consideration of
estimates for the needs of the several
state institutions for the ensuing bi-
ennial period, when \$125,000 was sliced
off the estimates submitted by the su-
perintendents, was also manifest at yes-
terday afternoon's adjourned meeting
and about \$50,000 more was cut out of
the estimates. The board resumed ses-
sion this afternoon, when it is expected
will complete its labors.

The aggregate total amount of the
appropriations which the state board of
control has passed upon favorably and
will recommend in its budget to the leg-
islature, exclusive of the estimates of
the institutions which are being passed
upon this afternoon, is \$1,399,639. The
largest amount to be recommended for
any institution of this amount is a to-
tal of \$745,711 for the main building
of the state insane asylum, of which
\$612,000 is set aside for maintenance,
\$82,711 for general repairs and improve-
ments and \$50,000 to complete the north
wing to the new receiving hospital.

The next largest appropriation to be
recommended is for the eastern Oregon
branch asylum, for the maintenance of
which \$175,500 has been decided upon;
\$100,000 for a new wing to make room
for 100 patients, and \$39,500 for general
repairs and improvements, making a
total of \$314,500. The penitentiary
comes next with a total appropriation
of \$185,400, of which \$85,500 is pro-
vided for general maintenance; \$64,880
for salaries, etc., and \$35,020 for ad-
ditional repairs and improvements. The
full list of appropriations passed upon
and to be recommended by the board
of control for adoption by the legisla-
ture, is as follows:

Insane Asylum (Main Building.)	
Maintenance	\$612,000
Completion receiving hospital	60,000
Repairs and improvements	82,711
Total	\$754,711
Eastern Oregon Asylum.	
Maintenance	\$175,500
New wing	100,000
Repairs and improvements	39,500
Total	\$314,500
Tubercular Sanatorium.	
Maintenance	\$38,800
Repairs and improvements	10,200
Total	\$49,000
Penitentiary.	
Maintenance	\$85,500
Salaries, etc.	64,880
Two new cottages	4,000
Steel water tank	3,000
New cow barn	10,000
Auto trucks	2,000
Gen. repairs and improvements	14,300
Total	\$185,400
Blind School.	
Maintenance	\$11,000.00
Salaries, etc.	19,000.00
Repairs and improvements	7,789.18
Total	\$37,789.18

REAL ESTATE TRANSFERS.

Warranty Deeds.
G. W. Barrows to J. D. Gilbert, land in
Brooks—\$300.
S. J. Ogle et ux to F. H. Reeves, lot 12,
block 2, Burlington add.—\$10.
E. J. Sauter et vir to E. W. James,
part of lot 6, block 6, Southwest add.—
\$10.
F. W. Waters et ux to Ladd & Bush,
land in Hanshaw Fruit Farms.—\$12,
500.

Quitclaim Deeds.
L. L. Stinson et al to John McCrow,
lot 12, block 33, Salem.
L. N. Coon to Nellie Strong, 6006 W.
St. Woodburn.—\$1.

**Quit
Scratching!**

**Zemo Stops Itching and Burning in
a Jiffy—Quickly Conquers
Eczema and other Skin
Tortures.**

Write for Free Trial Bottle.

Scratching stops as soon as the use of
Zemo is begun—and all that awful burn-
ing and itching stops too. Pimples, black-
heads and eczema cores begin to
fade away at once, and
rapidly become things of the past as the skin responds to
the action of this clean, anti-
septic, non-greasy, non-irritating
preparation. The thousands
telling of Zemo cures,
prove every claim for
Zemo, but you can't prove
it for yourself.

Buy a 2 cent bottle
from your druggist today,
and get immediate relief,
or send your address and
for actual cost to
E. W. Ross Co. Laboratories, Dept. 30, St.
Louis, Mo., for free trial bottle (in plain
wrapper) that will show you what Zemo
can and will do.

(If you try Zemo for after shaving,
you'll learn something to your advantage.)

Zemo is sold and guaranteed by
druggists everywhere, and in Salem by
J. C. PERRY.

The Markets

Transactions in wheat at Portland
yesterday were normal and prices prac-
tically unchanged. At Chicago the mar-
ket opened at slightly reduced figures
but buyers for foreign markets soon
sent it up a half a cent above the clos-
ing prices of the night before. Spot
closed last night at \$1.11 3/4. At
Portland bluestem sold at \$1.17 1/2 and
forty-fold a cent lower. Bran is priced
at \$24 to \$24.50, shorts \$23.50 to \$26,
and rolled barley at from \$27.50 to
\$28.50. There was things doing in hops
and more than 2000 bales changed
hands in the northwest. Ordinary are
quoted at from 8 to 9 cents and choice
are held at 10 1/2 and 11, and even as
high as 12 cents. McNeill Bros. bought
700 bales in the Orting, Wash., section,
and the J. W. Seavey Hop Co. bought
600 bales in Washington and Lane coun-
ties, this state, at \$12 to 11 cents. Eng-
land is supplying her colonies out of her
large crop and prices there are low.
The interesting news comes from the
New York markets that 'hops are easy,
evaporated apples steady, prunes firm
and peaches quiet,' which is especially
nice of the peaches in these piping
times of war. The hog market is firm
with prices ranging from \$7 to \$7.20.

LOCAL WHOLESALE MARKETS

Hay, timothy	\$12.00
Clover, per ton	\$ 8.00
Oats and vetch	\$ 8.50
Chest	\$ 8.00
Wheat, per bushel	\$1.05@1.10
Bran, per bushel	22
Bran, per ton	\$27.50
Shorts, per ton	\$29.00
Oats, per bushel	35@40
Chittim bark, per lb.	42@55
Potatoes, per cwt.	75@81
Butter and Eggs.	
Butterfat, per lb.	32c
Creamery butter, per lb.	34c
Eggs	30c cash
Poultry.	
Hens, per lb.	10c
Roosters, per lb.	8c
Fryers	11c
Livestock.	
Steers	6c
Cows, per cwt.	40c
Stock hogs, per lb. (tops)	5 1/2c
Hogs, at, per lb.	6c
Ewes, per lb.	3 1/2c
Spring lambs, per lb.	5c
Veal, first class	10c
Fels.	
Dry, per lb.	8c
Salted country pelts, each	50@65c
Lamb pelts, each	25c

Seattle Markets.

Seattle, Wash., Nov. 13.—Eggs—
Fresh ranch, 30c; fresh eastern, 35@
40c; Orientals, 18c.
Butter—Local cubes, 24c; bricks, 23c;
Oregon cubes, 25@30c.
Cheese—Limburger, 19c; Wisconsin,
10c; Swiss (domestic), 24c; Washing-
ton, 17 1/2@18c.
Omelette—Green, 20@25c per dozen;
eastern Washington, 16@17c per pound;
California, 16 1/2c.
Potatoes—Graded No. 1, \$14@18 per
ton.

San Francisco Markets.
San Francisco, Nov. 13.—Wheat (per
cwt.)—Club, \$1.95@2.00; bluestem, \$2.00
@2.10; Turkey red, \$2.00@2.05; red
wheat, \$1.92 1/2@1.95; forty-fold, \$2.00
@2.05.
Barley (per cwt.)—Feed, \$1.20@1.25;
shipping and brewing, \$1.20@1.27 1/2.
Eggs—Extras, 40c; pullets, 37c; Cali-
fornia storage, extras, 27c.
Butter—Extras, 31 1/2c; prime firsts,
28c; firsts, 26c; seconds, 24c.
Cheese—California fancy, 16c; firsts,
12c; seconds, 10c.

Portland Markets.

Portland, Ore., Nov. 13.—Wheat—
Club, \$1.13; bluestem, \$1.16; Walla Walla,
\$1.14.
Oats—No. 1 white feed, \$27.50; gray,
\$27.25.
Barley—Brewing, \$24.50; feed, \$24.25.
Hogs—Best live, \$7.20; prime steers,
\$7@7.25; fancy cows, \$6@6.25; best
calves, \$7@8; spring lambs, \$6@6.20.
Butter—City creamery, 34 1/2c.
Eggs—Selected local, extras, 42@
42 1/2c.
Hens, 10c; broilers, 13c; geese, 10c.

IDAHO POTATOES OFFERED LOWER

Portland, Ore., Nov. 13.—Idaho grow-
ers are freely offering their potatoes at
30c a cwt. f. o. b. shipping points,
and are capturing the trade of the
southwest. The freight rate from Port-
land and other nearby points is 7c a
cental to Arizona and Texas. A similar
rate applies from Idaho to Arizona, but
the rate from there to Texas is 12c less
than this territory. This, together with
the lower price that the Gen. state
growers are willing to sell at, complete-
ly cuts this territory from the south
west field.

There is at present practically no
market for Oregon potatoes in Califor-
nia. A few cars—perhaps a dozen or
15 in all—have been shipped to date to
that section as 'feeders' to see what
the market there was going to do but
no actual demand has sprung up.

Eggs Are Lower.
Sudden weakness and much dullness
combined to force a sharp loss in the
price of fresh ranch eggs in the local
market today. While in a very limited
way some of the trade still persisted in
asking 45c a dozen for extras, the bulk
of the trade was freely offering sup-
plies at 42 1/2c, and some were inclined
to accept 42c in order to clean up more
promptly.

It developed this morning that some
of the leading firms have been unable
to clean up current offerings of fresh
eggs during the last two days, there-
fore decided to put values lower in
the hope of cleaning up more promptly.
Receipts of fresh eggs are showing
a slight increase along the coast, but
this is scarcely considered the chief
factor in forcing prices down. Stor-
age eggs are being offered at a re-
duction and as these from the bulk of
present sales, it naturally followed that
the price of fresh stock must be re-
duced.

Cheese Is Higher.
Cheese prices are firmer and higher
locally. The advance is at least one
half cent a pound but in some quar-

NOTICE!

Clothing Announcement
for
SUNDAY AND MONDAY
on upper half of
Page Three
in both daily papers will appear an announcement
which will be OF INTEREST TO EVERY MAN
AND BOY. It will not be in the form of a SALE,
but one thing is SURE, that if you need
CLOTHING
it will be to your advantage to wait until you read
these announcements.
CLOTHING

SALE STARTS TOMORROW
Do you want to
Save 20 Per Cent
ON YOUR GROCERY BILL?
If so, take advantage of the rare bargains offered
by the
Closing Out Sale
of the choice stock of Staple and Fancy Groceries,
fixtures and all equipment of
B. D. FASCHING & SONS
Phone 873 705 South Twelfth Street
Sale starts tomorrow and continues until the entire
stock is sold.

GO NO FARTHER
The Evidence Is At Your Door.

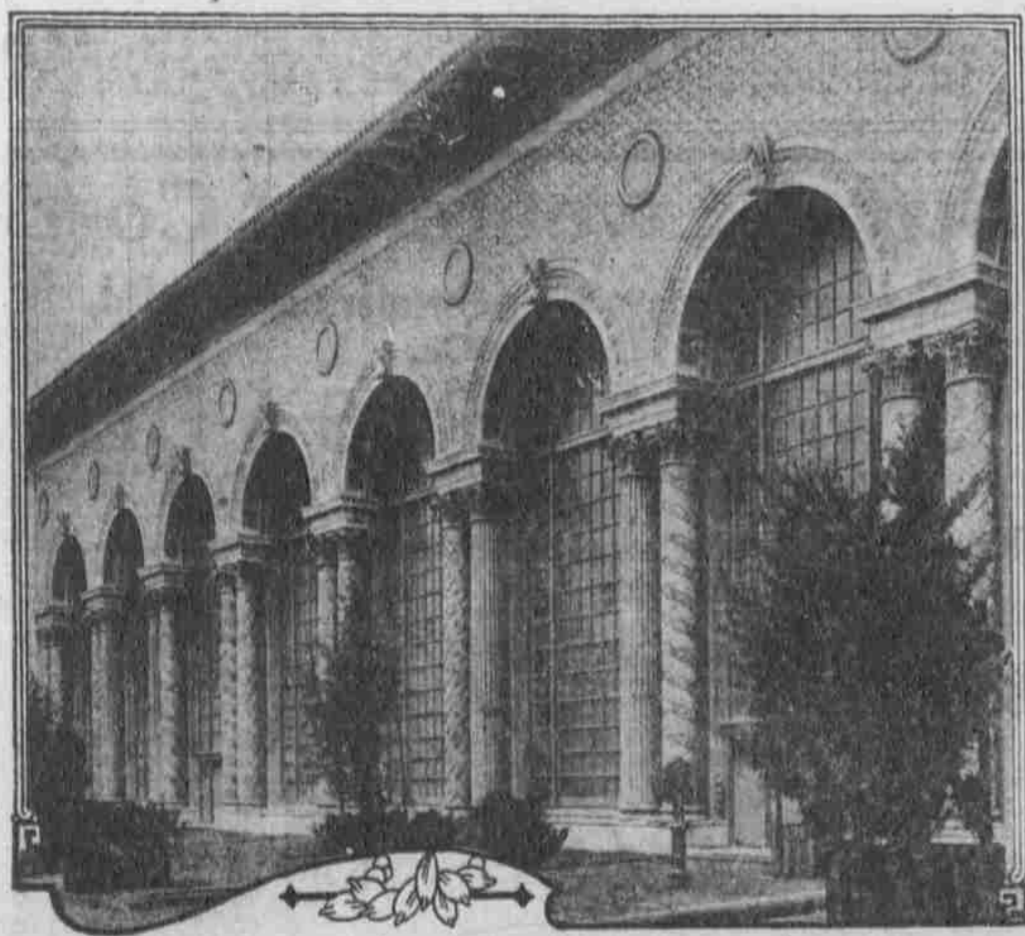
Salem proof of what you want and
the statement of this highly respected
resident will banish all doubts:
W. H. Root, Route No. 9, Salem, says:
"I believe a cold started kidney trouble
in my case. Too frequent action of
my kidneys annoyed me day and night
and sometimes I was unable to sleep.
The passages of the kidney secretions
were attended with a burning pain. If
I tried to stop, I had sharp twinges in
the small of my back. I felt weak,
tired and languid and often I got dizzy.
Nothing helped me until I took Doan's
Kidney Pills on a friend's advice. In
less than a month I felt like a different
man and four boxes made me well. The
pains went away and the kidney secre-
tions became normal. I publicly recom-
mended Doan's Kidney Pills after they
helped me so greatly and I now willingly
confirm that statement."

Price 20c, at all dealers. Don't simply
ask for a kidney remedy—get
Doan's Kidney Pills—the same that
Mr. Root had. Foster-Milburn Co.,
Proprs., Buffalo, N. Y.

As a friend of the telephone girls
we were successful in opposing the
proposed tax on chewing gum. If the
government wants to pack the treas-
ury with money, we suggest that it lay
a tax on chewing the rag.

weaker time for cattle during the day,
with values 15c off generally, although
tops remained at \$10.00 in the steer
division.

Superb Venetian Court of the Panama-Pacific International Exposition, San Francisco, 1915



VARIETY of color and the use and blending of Doric, Ionic and Corinthian, with a little play given to the
Byzantine architectural style, are shown in the two Venetian courts of the Panama-Pacific International
Exposition at San Francisco in 1915. These courts are the connecting links in the Exposition scheme of
courts, but they are to have a type of beauty not found elsewhere on the grounds.

One of the Venetian courts connects the Court of the Four Seasons with the Court of the Universe, and the
other connects the Court of the Universe with the Court of Abundance. The first one named is shown above.

Every bit of the interior of the courts is a part of a color scheme that includes all of the Exposition colors. Since
this photograph was taken the shrubs and flowering plants have been placed on all sides of the central paths, and
their colors are in harmony with every pigment used in the remainder of the court.

ARROW COLLARS

WHITBY, 1 1/2 in. high
ATLANTA, 2 1/2 in. high

NEW styles first
introduced in the Ar-
row Line in London.
Particularly adaptable
for wear with pleated
and soft shirts.

2 for 25 cts.

CLUETT, PEABODY & CO., Inc. Makers of Arrow Shirts TROY, N. Y.