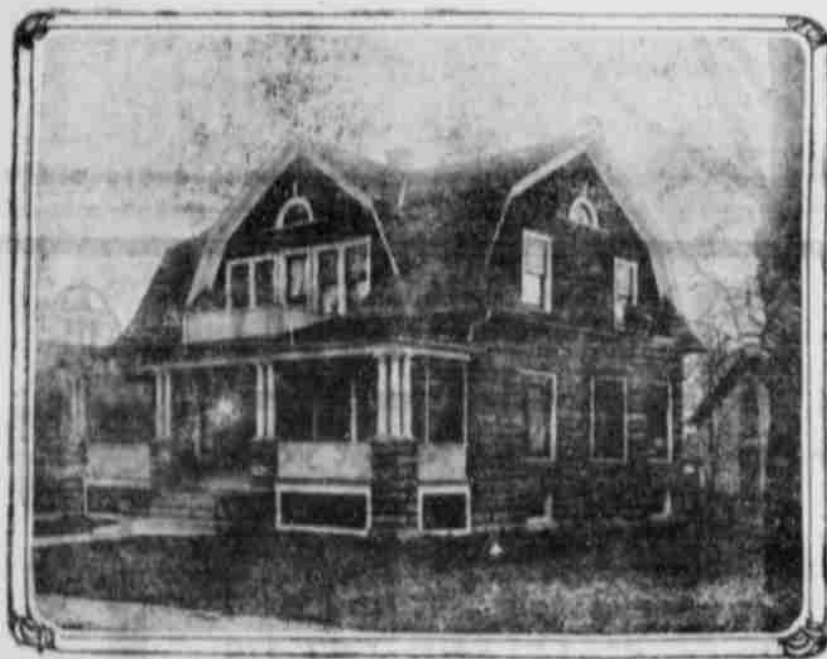


Salem Manufacturing and Jobbing Houses

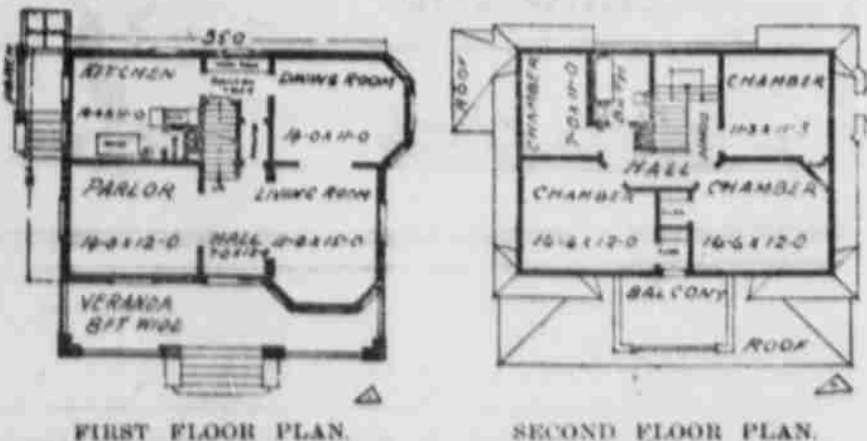
Below are represented many of Salem's leading manufacturing and jobbing houses. These home industries should be loyally supported by every Salem citizen. Ask for Salem products and insist on having them. They are just as good as those shipped in

<p>Salem Flouring Mills Co. Manufacture WILD ROSE FLOUR And carry a full stock of Bran and Shorts</p>	<p>T. S. Townsend Creamery Co. Manufacturers of Pure, Wholesome CASCADE BUTTER 137 Commercial St. Salem</p>	<p>SALEM CIGAR FACTORY Manufactures TASHMOO 12 1/2c LA CORONA 10c BON TON 5c Smoke Home-made Cigars AUG. HUCKESTEIN, Mgr.</p>	<p>MONUMENTS as they should be made. ARTISTIC PERMANENT None lower in price. None better. Electric Tools for Lettering Salem Granite and Marble Works 239 Liberty. W. W. Martin</p>	<p>OREGON SIENNA MINERAL PAINT CO. Manufacturers of and dealers in Paints, Stains, Varnishes, Fillers, Shellacs and Wall Finishes M. A. McCorkle, Pres. W. Y. Richardson, Sec. SALEM, OR.</p>	<p>W. W. Zinn Manufacturer and Jobber CANDIES and ICE CREAM Zinn's goods are known for their purity and flavor. Special attention to supplying parties. Phone 215. 440 State Salem, Or.</p>
<p>H. S. Gile & Co. Wholesale Grocers Salem, Oregon</p>	<p>Rodgers Paper Co. Wholesale Paper 404 Court St., Salem, Or.</p>	<p>Threshermen Attention! Now is the time to bring your threshing engines to have them repaired. Do not wait until the last day, as there may be some one ahead of you. Come early and avoid the rush. We carry a full line of high pressure steam gauges, also best Scotch water glass. Repairs on automobiles, marine and threshing engines and all farm machinery a specialty. E. M. KIGHTLINGER, 178 South Liberty Street</p>	<p>Cross & Son Established 1884. Meat Market Cured Meat Products of all kinds. Wholesale and Retail Phone 291. 379 State St. Salem, Or.</p>	<p>HARRY P. CHASE Established 1893. Manufacturer and Jobber Wind Mills, Pumps and Plumbing Supplies Special make metal and wood tanks and spray pumps. Phone 246. 101-113 Front St. Salem, Or.</p>	<p>FRANK M. BROWN 145 Front St. Sash and Door Factory All kinds of Finish. ESTIMATES FURNISHED</p>
<p>CAPITAL DRUG STORE Z. J. Riggs, Prop. Compounder of the following preparations of merit: Capital Cold Cure. Capital Headache Tablets. Capital Tooth Powder. Capital Witch Hazel Cream. Capital Syrup White Pine & Eucalyptol Honey. Celestial Cold Cream. Magic Corn Cure. The Little Wonder Antiseptic Suppository.</p>	<p>CAPITAL SOAP WORKS and Angora Rug Company TANNERS Unlimited amount of hides and pelts. Grease and tallow wanted; will pay highest market price. Phone 683. 1230 Ferry St. SALEM, OR.</p>	<p>TORIC LENSES When you need glasses, try our great and celebrated Toric Lenses, which help your eyes to retain their strength longer than other lenses, and the vision in all directions are equal. We can grind these for you on the shortest notice. CHAS. H. HINGES, D. O. Refracting and Manufacturing Optician. 123 N. Commercial Street</p>	<p>Eppley's Perfection Baking Powder Known for its quality</p>	<p>NEW PROCESS OF SAND PAPERING Inside finish ready for varnish, thereby making a great saving to carpenter and builder. Inquire at A. M. Hansen's Planing Mill Corner Church and Mill</p>	<p>FOR CLEAN, HEALTHY NURSERY STOCK OF ALL KINDS THE OREGON NURSERY CO. LEADS Just remember this</p>

A Picturesque Concrete Residence.
The Finish Gives the Appearance of Brown Sandstone.
Architect's Estimate, at Least \$5,000.
Copyright, 1909, by the Thompson Architectural Company, Olean, N. Y.



PERSPECTIVE VIEW—FROM A PHOTOGRAPH.



FIRST FLOOR PLAN.

SECOND FLOOR PLAN.

This picturesque gambrel roof house, originally built at Randolph, N. Y., has many pleasing features. Size, 28 by 35 feet without bay or veranda. The color is brown sandstone. Cost, including heating and plumbing, \$3,000.
THE THOMPSON ARCHITECTURAL COMPANY.

THE HORSE EDITOR IS GLAD ELLIOTT MOVED

N. D. Elliott is one of Salem's countrymen, and he is also a job printer. He used to have an office upstairs over The Journal office, and by his door the horse editor had to pass dozens of times a day. The horse editor never had any ill feeling toward the counsellor and job printer aforesaid, but he wants to say right now that he is heartily glad Elliott has moved. Of course, it sounds a bit rough to jump on a man that way, in a newspaper, when the other poor devil of a printer has only a job office to reply with, but it can't be helped. The charming frankness and childlike ingenuousness which the horse editor prides himself upon as being the most lovable traits in his admirable character compels him to reiterate that he is dog-goned glad Elliott has moved—because he has just moved down a little closer, and

is now on the same floor, and there is nothing now between him and the horse editor but a partition, and a difference of opinion, politically. The partition don't amount to much and the opinion—oh, well, even a job printer may make mistakes, occasionally.

Nate has a fine office; it is as light as a dream of love, airy as a political speech, and he has one of the finest plants in the Northwest. Elliott can point you a wedding notice that will make your best girl glad she said yes, or a funeral notice that will make you glad you are dead. He can do any kind of printing work that you may desire on short notice, and do it in a way to make you, as well as the horse editor, glad that he has moved down, where you can get acquainted with him and see his samples. Call and see him. Don't knock; just walk in, and he will do the rest.

YOU NEVER CAN TELL
just exactly the cause of your rheumatism, but you know you have it. Do you know that Ballard's now Liniment will cure it?—relieves the pain—reduces the swelling and limbers the joints and muscles so that you will be as active and well as you ever were. Price 25c and \$1.00. Sold by all Dealers.

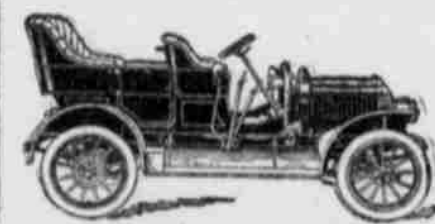
The scarcity of feathers in the millinery trade threatens to boost the price in the fruit and vegetable line.

Many weak, nervous women have been restored to health by Foley's Kidney Remedy as it stimulates the kidneys so they will eliminate the waste matter from the blood. Impurities depress the nerves, causing nervous exhaustion and other ailments. Commence today and you will soon be well. Pleasant to take J. C. Perry.

Shanghai exports up to 30,000 deer skins a year.

If you want to feel well, look well and be well, take Foley's Kidney Remedy. It tones up the kidneys and bladder, purifies the blood and restores health and strength. Pleasant to take and contains no harmful drugs. Why not commence today? J. C. Perry.

VOGET LUMBER & FUEL COMPANY
Builders and manufacturers of rough and dressed lumber, as well as all kinds of mill work. Dealers in
BUILDING MATERIAL WOOD AND COAL
Houses built and sold at reasonable terms.
Office and Yard S. 14th and Oak. Phone 198.



THE CAR that's guaranteed by the strongest Automobile Company in the World.

Model D A 4 Cyl., 30 H.P.
Standard American Touring Car, \$1750

The MAXWELL

There are two factors that should determine the selection of your automobile—if you want real service.

First, the stability and resource of the manufacturer; second, the ability and reputation of the designer.

On these two points the MAXWELL stands supreme.

As to the first, three great factories with an equipment of over \$1,500,000 comes as the result of "making good." For 1910 the Maxwell-Briscoe Motor Company will build over 10,000 cars. As to the second, designed by Mr. J. D. Maxwell, the MAXWELL is founded on sound engineering common sense—this, with the combined judgment of 12,000 automobilists who have already bought MAXWELLS and are glad of it, makes your purchase of this car an investment, not a speculation. Send for catalogue which fully describes our six models.

Drop around and see the MAXWELL and have it explained and demonstrated.

Garage on State street, on alley just back of Board of Trade.

J. F. PRIEHS, Agent
Phone 386

There's a Top Rung in Every Ladder

Among the retail lumber yards in Oregon south of Portland ours is easily at the top. By this we mean we have the Largest Stock, the Best Grades, the Fairest Price List, Promptest Delivery, and give our customers the best all-round treatment.

Spaulding Logging Co.

YARD ON FRONT STREET TEAM ENTRANCE ON FERRY STREET