

CALHOUN'S TRIAL BEGINS

MICHAEL MURPHY IS THE LAST JUROR

[United Press Leased Wire.]
San Francisco, April 15.—At 2 o'clock this afternoon the trial of Patrick Calhoun, president of the United Railroads, on a charge of alleged bribery, was actually begun in the court of Judge William P. Lawlor.

The thirteenth juror to try the case was secured this morning in the person of Michael Murphy, a retired sergeant of police. As soon as Murphy was finally accepted by both sides, Judge Lawlor read to the jury the indictment returned against the defendant, and instructed it as to its duties.

At 2 o'clock Special Prosecutor Honey began his opening statement to the jury. He declared that the prosecution would endeavor to prove to the satisfaction of the jurors that the charge upon which Calhoun is being tried is true; that the defendant bribed and countenanced the bribing of former Supervisor Fred P. Nichols, whose vote for an overhead trolley franchise was desired by the United Railroads.

THE NEW FISH LAWS OF OREGON

County Clerk Allen has placed an order for a stock of fishing licenses, which are to be issued at \$1.00 per license, in accordance with the new fish law enacted by the last legislature. The new licenses will have printed on the back a summary of the 1909 laws governing the limit and regulations of rod and line sportsmen. Following is the complete summary:

- Catch Limit.**
Trout—75 in one day, except in Klamath county.
Trout—In Klamath county, 25 in one day.
Bass and salmon trout, no limit.
- Seasons.**
Trout—Open season, April 1, to November 1.
Trout—In Baker county, from lakes, open season July 1 to October 1.
Trout—In Link river, Klamath county, open season September 1 to June 1. Bass and salmon trout open all year.
- What is Always Unlawful.**
To fish without a license.
To fish in logue river and its tributaries.
To fish at night, or one hour after sunset and one hour before sunrise,

except within tide waters of the Coquille river.

To sell trout, except those propagated in private fish hatcheries, then under the direction of the state fish warden.

To take trout, salmon trout or bass except with hook and line.

To take trout, salmon trout or salmon less than six inches in length
To use powder, gas, lime, "cocculus indicus," etc in any lake, river, stream, pond, bay or other waters in the state of Oregon.

To cast sawdust, planer shavings, lumber waste, wood pulp, etc., in any stream in the state.

Penalties.

Fine to fish without license, from \$25 to \$150.

Fine for the violation of any fish laws, from \$25 to \$150.

Fine for the use of powder, gas, lime, etc., in any stream in the state \$200 to \$300.

The above laws will go into effect on the 23d of May.

WOODMEN WILL VISIT SILVERTON

The members of Silver Bell Circle No. 43, and members of the local camp of Woodmen of the World will be guests of the Silverton lodge April 20, and are making big preparations for the event. Lodges from many of the valley towns will be present, and will present applications for initiation. Mr. Boak, head counsel of the Woodmen, of Denver, Colo., and other officers of the head camp will be present, and will conduct the initiation services in the Silverton opera house. Three coaches will go from here, 150 tickets having already been sold.

BISHOP HAIL WILL PREACH

Bishop W. F. Hail, of Highland Park sec. will preach in the United Evangelical church, cottage street, between Center and Marion, next Sunday at 11 a. m. and in the evening at 7:30.

Rev. Hail is one of the younger bishops of the United Evangelical church, and one of the most popular pulpiter orators. His sermon will interest you.

CIVIL WAR

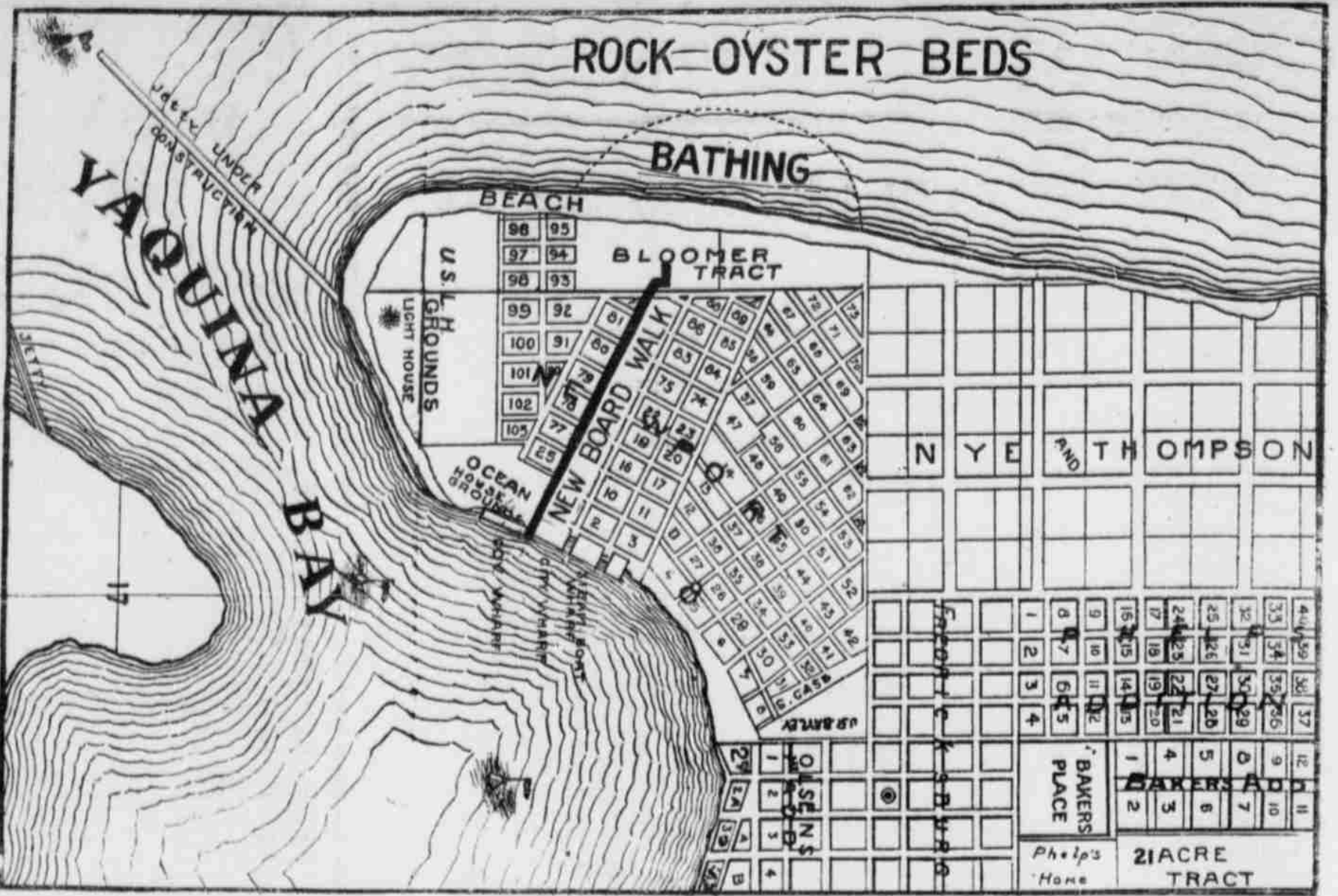
(Continued from Page 1.)

Army on the March.

Vienna, April 15.—The second army corps of Turkey is marching from Adrianople, where its headquarters are located, toward Constantinople today, according to dispatches received here.

It is not known whether the corps intend to join the munitineers or oppose them. The second corps heretofore has been loyal to the young Turks, but it is believed here now that it has joined the opposition.

Censorship of the news coming out of Turkey makes accuracy impossible and it will probably be days before the actual result of the movement of the troops will become known.



STUDY THE ABOVE MAP

BLOOMER'S ADDITION to the City of Newport, Oregon, is now on the market for the first time. The tract is located about half way between Nye Creek and Newport, and consists of some 30 lots, on the rising ground directly above the ocean. Each lot is but a few steps from the beach and commands a view of the ocean or surf for miles north and south. To the north can be seen Jump Off Joe and the Yaquina Head Light. To the south the entrance to Yaquina Bay and the Lifesaving Station. The property is about a five-minute walk from the boat landing in Newport. It is reached by a new six-foot board walk, which runs in a straight line from the Ocean House Hotel in a northwest direction to the lots. This is now the most popular walk in Newport on account of its beautiful surroundings and magnificent view of the Pacific when the end is reached at **BLOOMER'S ADDITION**. Here before the observer the ocean and the beach stretch for miles and miles.

A WORD ABOUT YAQUINA BAY

You could not find a more interesting location to spend your summer than around this beautiful bay, which is conceded by those who know, to be the most beautiful summer resort. **NATURALLY**, of any on the Pacific coast, barring none. Hunting and fishing are unexcelled, and the many places of interest close to Newport, such as the Lighthouse, Otter Rock, Seal Rocks, etc., make it an ideal place to own a summer home.

NOW LOOK AT THE MAP

You will see that **BLOOMER'S ADDITION** is right on the ocean, and yet has the great advantage of being close to the bay and town, with no steep hills to climb to reach it. The beach in front of the property is good for bathing and the gathering of rock oysters. Mr. Bloomer has already built two beautiful cottages on these lots for his own personal use. Mr. Bloomer is a Seattle man, and intends to make this the most popular addition to Newport.

For further information enquire at

CAPITAL JOURNAL OFFICE

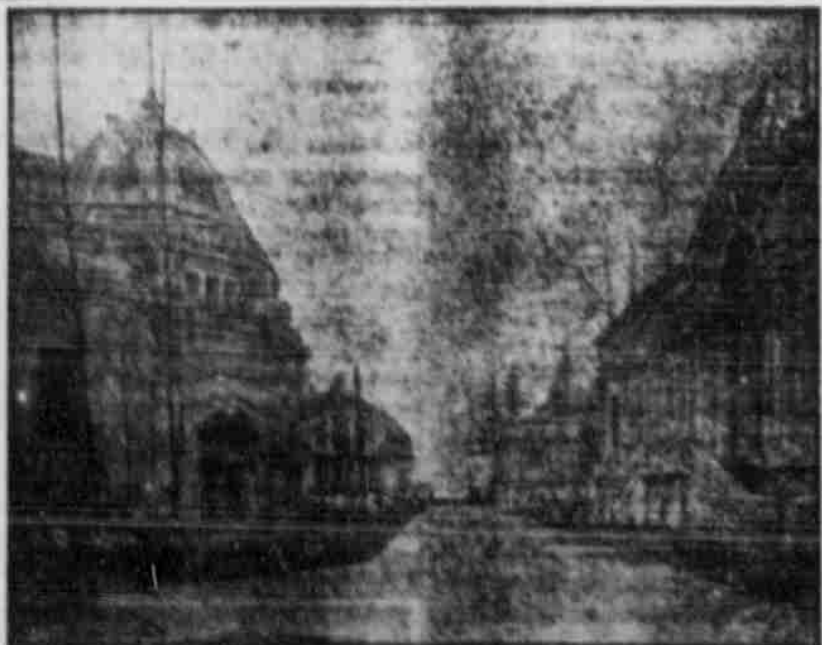
MISSIONARIES ARE IN DANGER

[United Press Leased Wire.]
Constantinople, April 15.—Fear is felt for the safety of the inmates of two American missions at Mersina, Asia Minor, a seaport on the Mediterranean, where the Moslems are reported today to be killing the Armenians. It is reported here that the trouble

is the result of an Armenian killing two Moslems. The murderer was not arrested, and the Mohammedan population attacked the Armenians, declaring they would exterminate the Christian population. The last report stated that a massacre was in progress, and that the foreign legations had received urgent calls for help. The Christian population of the city amounts to 35,000 persons.

DeWitt's Little Early Risers, gentle, easy, pleasant, little liver pills. Sold by all druggists.
When you come to think of it you must admit that you cannot gain even your own approval by bad manners.
It's a Top Notch Doer.
Great deeds compel regard. The world crowns its doers. That's why

the American people have crowned Dr. King's New Discovery the King of Throat and Lung remedies. Every atom is a health force. It kills germs, and colds and la grippe vanish. It heals cough-racked membranes and coughing stops. Sore, inflamed bronchial tubes and lungs are cured and hemorrhages cease. Dr. Geo. More, Black Jack, N. C., writes "it cured me of lung trouble, pronounced hopeless by all doctors." 50c, \$1.00. Trial bottle free. Guaranteed by J. C. Perry.



LOOKING DOWN YUKON AVENUE.

One of the most traveled highways of the Alaska-Yukon-Pacific Exposition will be the street to which has been given the name of Yukon Avenue. Yukon Avenue makes its way across the exposition grounds from west to east, and the ends are represented by Klondike Circle near the entrance, and Nome Circle on which fronts the classic Forestry building. It crosses the roaring Cascades on oriental bridges of handsome design, and from its central part the buildings of Hawaii and Alaska, backed by the enormous federal structure, are directly to the north.

Just to the west of Klondike Circle the Pay Streak winds in a general direction from north to south, and at the eastern end the land gives way precipitously to the shores of Lake Washington. It is on this beautiful shore of the lake the natural amphitheatre is located, and nature has so quaintly formed this delightful spot, that small effort has been required of man to transform it into as perfect an exhibition place as is possible. Its curving, sloping sides complete a semi-circle, and from its tiers of towering seats 20,000 spectators may witness the entertainments with no possibilities of occupying a single undesirable seat.

A wonderful variety of architectural display is shown by the many buildings through which Yukon Avenue passes, and during its course the visitor passes from man-made monuments through parts of magnificent forests whose grandeur has never been marred by the destructive craft of Mammoth's disciples. From every side the line of horizon is defined by mountains whose lines are delineated in perpetual snow, and stretching away as far as the eye can travel rest the waters of Puget Sound.



Have You Seen the New Styles IN BISHOP'S READY TAILORED SUITS \$10 to \$35

Our spring line of suits, recently arrived, is making a tremendous hit with those who have seen them. It's but right that they should. The patterns are simply great. Beautiful fabrics backed up with quality. The tailoring is the best, and prices are especially attractive.

SALEM WOOLEN MILL STORE