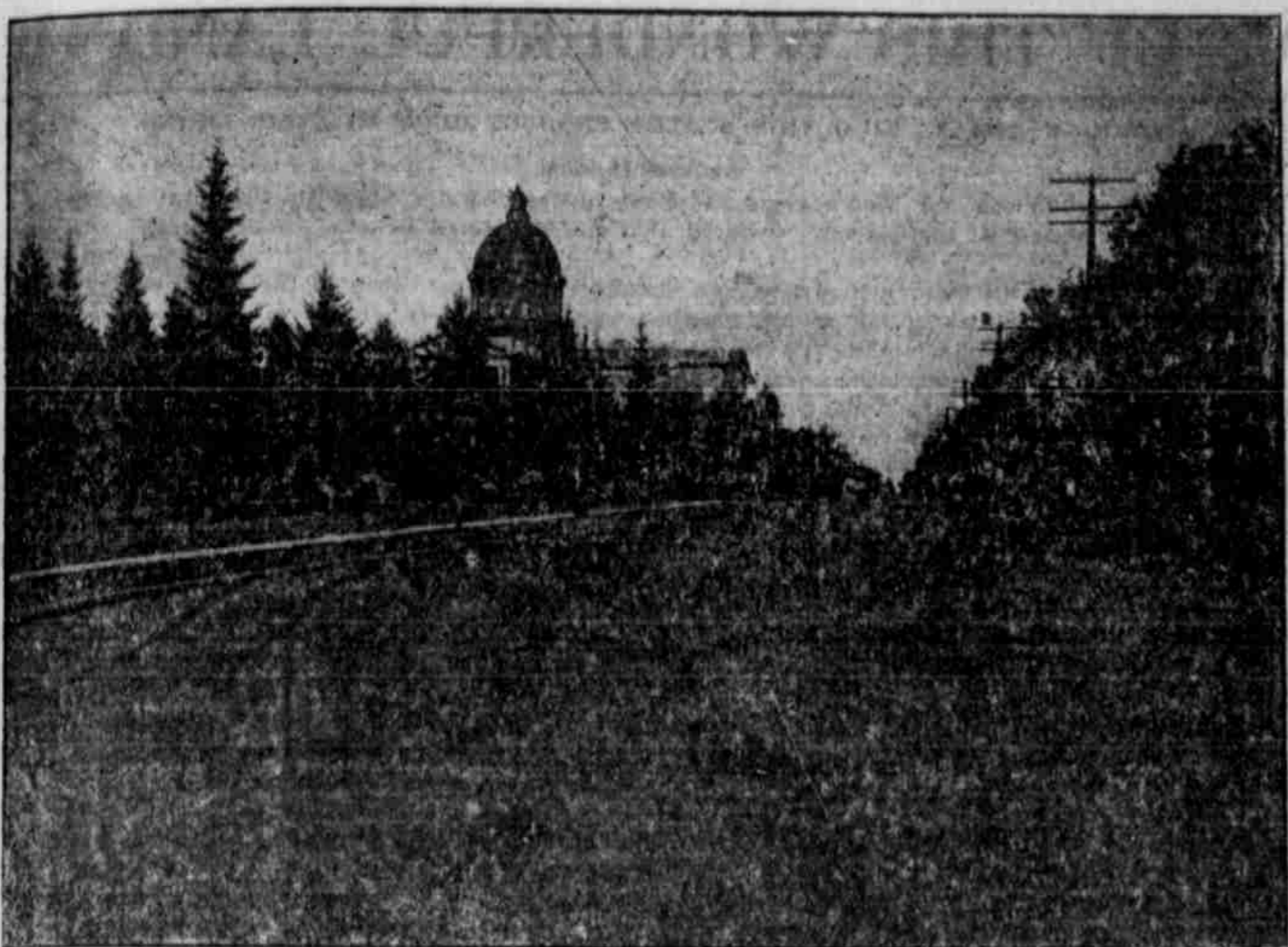
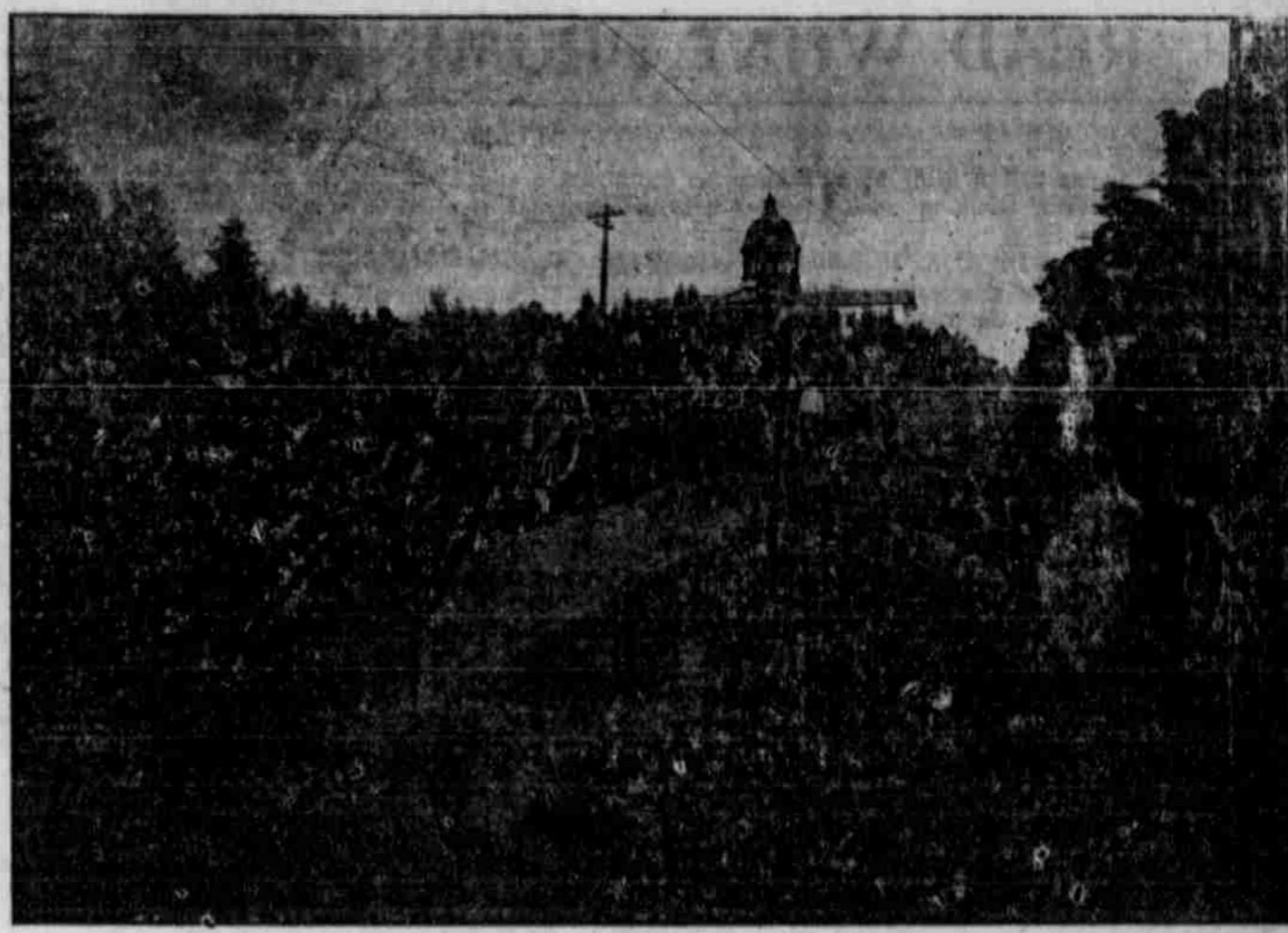


BITULITHIC PAVEMENT

SELECTED BY THE CAPITAL CITY OF OREGON FOR ITS FINEST BUSINESS AND RESIDENCE STREETS--CONCRETE CURBS AND SIDEWALKS, AND CAR TRACKS FINISHED WITH PAVING BRICK AND 90 POUND T-RAILS : : : :



STATE STREET, LOOKING EAST TO THE CAPITOL BEFORE PAVING WITH WARREN BROTHERS' BITULITHIC PAVEMENT.



STATE STREET, LOOKING EAST PAST THE STATE HOUSE, SHOWING STREET IMPROVED WITH WARREN BROTHERS' BITULITHIC PAVEMENT.

STATE STREET, SALEM, OREGON, 99 FT. WIDE, BEING PAVED WITH THE FINEST PAVEMENT IN THE WORLD--10 INCHES OF CRUSHED BASALT AND BITUMEN ON GRAVEL FOUNDATION

Warren Construction Co., PORTLAND, OREGON

PROMINENT PEOPLE CREATED CHERRY FAIR

Roll of Honor of Workers and Exhibitors Who Put Through the Great Mid-Summer Social Event

The most prominent citizens of Salem took an active part in the work of organizing the cherry fair. Business men who seldom take hold of public enterprises pull off their coats and put on days and weeks at the details of the programs, the parades and exhibits. Prominent among these are like C. A. Park, horticultural commissioner of the second district, so with the county fruit inspectors under his direction assembled the city exhibits, and secured many of the individual exhibits from fruit growers. Mr. Park is the manager of the Wallace fruit farm east of the city, and takes a pride in getting a creditable display for the state fairs and expositions. He is a successful and scientific fruit grower; himself and understands organization and setting others to work. He had the co-operation of H. S. Gile, the pioneer prune packer and large handler of Oregon green and pie's fruits. At the head of the organization committee was the veteran banker and fruit grower, John H. Albel, president of the Board of Trade and head of the recreation committee for the Cherry Fair. With an auto at his disposal he met all trains, took prominent visitors to tour the orchards, was ubiquitous and helpful all around. F. W. Power, for many years with the Oregon Nursery company, and one of the best posted scientific botanists in Oregon, besides being an expert nurseryman, was chairman of the general Cherry Fair committee, and had all the subcommittees at his command. The two Salem newspapers turned their pages over to these committees carte blanche, and there was a constant stream of information poured out, and while not on any commit-

tees the whole newspaper force of two offices was at the disposal of the Cherry Fair. Following are the names of some of the Salem business men who were Cherry Fair workers, although by no means all of them:

F. W. Power H. C. Eppley
C. A. Park Hermann Barr
H. S. Gile D. Yantla
H. D. Patton W. H. Burghardt
Harry Albert M. O. Buren
Dave Yantla A. Huckstein
F. A. Douglas Chauncey Bishop
C. M. Bishop J. H. Scott
H. W. Meyers C. V. Galloway
Chas. Rock E. C. Armstrong
F. G. Deckabach F. J. Leffy
H. B. Tholsten Harley White
Rev. Barr G. Lee I. N. Maxwell
J. R. Shepard F. A. Kurtz
Frank Hughes

- List of Persons Making Entries at the Cherry Fair, 1908.
- G. W. Dimick, Salem, Royal Ann.
 - J. M. Snong, Salem, Royal Ann.
 - N. W. Clark, Salem, Royal Ann.
 - N. W. Clark, Salem, Late Duke.
 - Eari Brunk, Salem, Lambert, Red Raspberries, Black Raspberries, Loganberries and Gooseberries.
 - H. H. Cross, Salem, Seedling.
 - Mrs. E. G. White, Salem, Royal Ann, Loganberries.
 - J. C. Ferguson, Salem, Royal Ann.
 - A. Verber, Salem, Bing, Royal Ann, Lambert.
 - Walter G. Pearmine, Salem, Royal Ann.
 - Wm. Zozel, Salem, Royal Ann, Late Duke.
 - Mrs. Mabel Keizer, Salem, Royal Ann.
 - Frank Marshall, Salem, Mammoth Blackberries.
 - E. W. St. Pierre, Salem, Royal Ann.
 - C. H. Chapman, Salem, Hoskins, Lambert, Deacon, Bing.

- H. S. Gile, Salem, Gooseberries.
- Mrs. L. Stege, Salem, Royal Ann.
- J. H. Albert, Salem, Bing, Royal Ann.
- H. P. Cleveland, Salem, Kentish, Royal Ann.
- L. T. Reynolds, Salem, Deacon, Lambert, Black Republican.
- G. S. Welch, Salem, Lambert, Royal Ann.
- T. D. Jones, Salem, English Morello, Late Duke, Black Tartarian--display on plates.
- W. H. Adair, McMinnville, Royal Ann.
- T. C. Walling, Salem, Royal Ann.
- Hans Tuffe, Salem, Lambert.
- Leo Barr, Salem, Phenomenal berries.
- D. R. Rubie, Salem, general fruit display.
- A. F. Beardley, Salem, Royal Ann, Gov. Wood.
- L. Ohmart, Salem, Royal Ann.
- C. E. Hanna, Salem, Royal Ann, Late Duke.
- H. A. Lewis, Portland, Royal Ann.
- B. F. Ferguson, Salem, Royal Ann, Bing.
- F. A. Kurtz, Salem, Royal Ann, Late Duke.
- Mrs. F. B. Southwick, Salem, Royal Ann.
- N. C. Jorgenson, Salem, Black Raspberries, Red Raspberries, Royal Ann, Deacon.
- D. Parker, Salem, Mammoth Blackberries.
- Lloyd Lee, Salem, Mulberries.
- Carpenter Bros, Salem, Red Raspberries, Black Raspberries, Loganberries, Phenomenal berries.
- D. Webster, Salem, Kentish.
- C. H. Edmunson, Salem, Royal Ann.
- H. S. Butz, Delta, Royal Ann.
- Water Bros., Salem, Royal Ann, Black Republican.
- Mrs. G. Metzner, Salem, Royal Ann.
- T. H. Blundell, Salem, Royal Ann.
- A. F. Hofer, Salem, Lambert.
- S. Lindley, Lebanon, Royal Ann.
- A. F. Baker, Lebanon, Royal Ann.
- D. T. Petree, Lebanon, Royal Ann.
- A. O. Strum, Lebanon, Black Republican.
- Miss Bertha Bottine, Salem, Royal Ann.
- Sim Phillips, Salem, Royal Ann, Bing.
- Dr. A. G. Prill, Scio, Bing.
- Mon'ca Devany, Scio, Black Tartarian.

- Miss Annie Felzer, Tangent, Lambert.
- C. A. Muth, Salem, Black Republican, Royal Ann, English Morello, Kentish, Bing, Lambert, Dewberries, Peaches.
- Wm. H. Egan, Gervais, Peaches.
- A. M. LaPollett, Gervais, Peaches.
- T. D. Phillips, Dallas, Royal Ann.
- A. J. Hager, Salem, Royal Ann.
- Mrs. M. C. Wilson, Salem, Royal Ann, Hoskins, Centennial, display commercial pack.
- H. Best, Monmouth, Waterhouse.
- James Winstanley, Salem, Black Republican and Black Tartarian.
- J. M. Howard, Harrisburg, Royal Ann.
- John Minger, Salem, Royal Ann, Loganberries.
- J. R. Shepard, Salem, Bing Waterhouse, Black Republican, Lambert.
- C. A. Clark, Salem, Bing, Royal Ann, May Duke.
- W. D. Mithollen, Albany, Royal Ann, Bing.
- Z. Mills, Springbrook, Royal Ann, Hoskins, Bing, Oregon.
- Geo. Weeks, Salem, crate Phenomenal.
- J. J. Dalrymple, Salem, Black Republican.
- Minnie Hensel, Salem, Royal Ann.
- T. J. Clark, Salem, dried Loganberries.
- Enos Presnall, Salem, Hoskins, Royal Ann, Seedling.
- L. M. Gilbert, Salem, Hoskins, Royal Ann, Bing.
- Paul Wallace, Salem, display commercial pack.
- Mrs. Joel Hewitt, Salem, Royal Ann.
- S. P. Kimball, Salem, dried Royal Ann.
- H. S. Gile & Co., Salem, display commercial pack.
- Floral.
- Mrs. J. D. Sutherland, Salem, collection Sweet Peas.
- Mrs. Mary S. Moores, Salem, collection Roses.
- Leo, Sothbart, Salem, collection Sweet Peas.
- Mrs. J. H. Heas, Salem, collection Carnations, collection Pansies.
- Mrs. Ashley White, Salem, collection Sweet Peas.
- Mrs. C. A. Muth, Salem, floral display.
- Irma Cooper, Salem, collection of Sweet Peas, collection of Roses.
- Mrs. Frank Waters, floral display.

Insane Hospital, floral display, collection Sweet Peas.
Madam A. Markievitch, collection Carnations.
Mrs. George Mason, collection of Sweet Peas.

LOW RATES EAST

Will Be Made This Season by the SOUTHERN PACIFIC (LINES IN OREGON) From Salem, Ore.

AS FOLLOWS:

TO	THROUGH	VIA
Chicago	\$74.15	\$87.50
St. Louis	\$69.15	\$82.50
St. Paul	\$61.65	\$817.5
Omaha	\$61.65	\$75.00
Kansas City	\$61.65	\$75.00

TICKETS WILL BE ON SALE July 6, 7, 22, 23 August 6, 7, 21, 22

Good for return in 90 days with stopover privileges at pleasure within limits

REMEMBER THE DATES

For any further information call our agents.

WM. McMURRAY, General Passenger Agent, PORTLAND, OREGON.

CORVALLIS & EASTERN R. R.

TIME TABLE

No. 4-- Leaves Detroit 1:00 p. m. follows, commencing Jan. 16, 1908: Trains for Corvallis.

No. 8-- Leaves Albany 7:55 a. m. Arrives at Corvallis 8:35 a. m.

No. 16-- Leaves Albany 3:55 p. m. Arrives at Corvallis 4:35 p. m.

No. 6-- Leaves Albany 7:45 p. m. Arrives at Corvallis 8:25 p. m.

Trains for Albany.

No. 5-- Leaves Corvallis 6:30 a. m. Arrives at Albany 7:10 a. m.

No. 9-- Leaves Corvallis 2:15 p. m. Arrives at Albany 2:55 p. m.

No. 7-- Leaves Corvallis 6:00 p. m. Arrives at Albany 6:40 p. m.

No. 11 (Sunday only)-- Leaves Corvallis 11:15 a. m. Arrives at Albany 11:55 a. m.

No. 12 (Sunday only)-- Leaves Albany 12:35 p. m. Arrives at Corvallis 1:18 p. m.

For further information apply to Portland, Oregon, June 17. Commencing June 22nd and until further notice, the following train service will be in effect on the line of the C. & E. R. R. between Albany and Yaquina, daily except Sunday:

Train No. 16	Train No. 3
Mixed	Passenger
Leave Albany 7:45 a. m.	12:40 p. m.
Arr. Yaquina 1:30 p. m.	5:30 p. m.
Train No. 15	Train No. 1
Passenger	Mixed
Lv. Yaquina 2:15 p. m.	7:00 a. m.
Arr. Albany 7:00 p. m.	11:55 a. m.

On Sundays the service will be as follows:
Lv. Albany 7:35 a. m.; ar. Yaquina 11:40 a. m.; lv. Yaquina 6:00 p. m.; ar. Albany 11:30 p. m.

WM. McMURRAY, Gen. Pass. Agent.

Oregon Electric Time Table

Time of arrival and departure of cars at Salem is as follows, Portland and intermediate points:

	Arrive	Leave
Local	8:40 a. m.	6:00 a. m.
Express	10:50 a. m.	9:05 a. m.
Local	1:25 p. m.	11:05 a. m.
Express	4:20 p. m.	1:45 p. m.
Local	5:45 p. m.	3:28 p. m.
Express	8:20 p. m.	6:00 p. m.