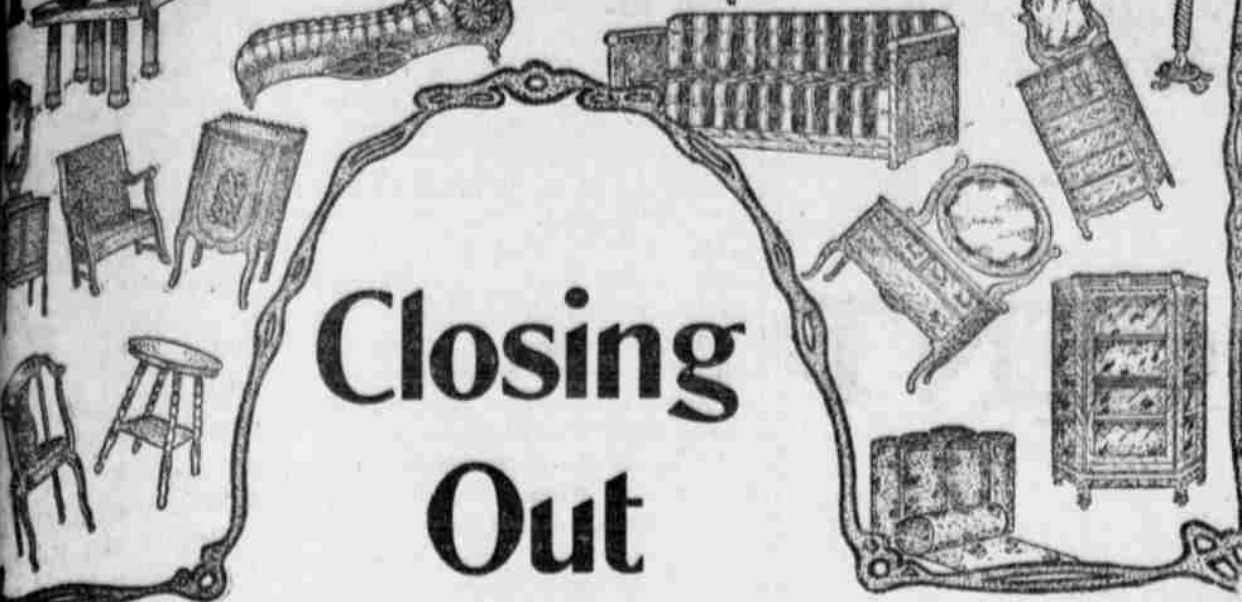


FURNITURE SALE



Closing Out

The Beginning of the Ending of Our Great Closing Out Sale

The indications are that the sale of the next few weeks will put us out of business.

We still have a plentiful supply of all kinds of Furniture, Carpets, Rugs, Linoleums and Wall Paper.

None of the profits for us; all for the purchaser.

The House Furnishing Company

177 Liberty Street

DR. KUM

WISDOMFUL CHINESE DOCTOR
Will treat you with Oriental herbs for any disease without operation.
Dr. Kum is known everywhere in Oregon, and has cured many prominent people here. He has lived in China for 18 years, and can be trusted. He uses many medicines unknown to white doctors, and with them can cure catarrh, asthma, rheumatism, stomach, kidney and bladder diseases.
Dr. Kum makes a specialty of male and female troubles. His remedies cure private disease when everything else fails. He has hundreds of testimonials, and gives complete free. Prices for medicines moderate. Persons in the country write for blank. Send stamp if you want some extra fine tea.
DR. KUM BOW WO CO.
177 Liberty Street, Salem, Oregon

CORVALLIS & EASTERN R. R.

TIME TABLE NO. 37.
Trains from and to Yaquina.

No. 1—	Leaves Yaquina	7:15 a.m.
	Arrives at Corvallis	11:00 a.m.
	Arrives at Albany	11:58 a.m.
No. 2—	Leaves Albany	12:35 p.m.
	Leaves Corvallis	1:30 p.m.
	Arrives at Yaquina	5:40 p.m.
Trains to and from Detroit.		
No. 3—	Leaves Albany	7:30 a.m.
	Arrives at Detroit	12:30 p.m.
No. 4—	Leaves Detroit	1:00 p.m.
	Arrives at Albany	5:55 p.m.
Trains for Corvallis.		
No. 8—	Leaves Albany	7:55 a.m.
	Arrives at Corvallis	8:35 a.m.
No. 10—	Leaves Albany	2:25 p.m.
	Arrives at Corvallis	3:05 p.m.
No. 6—	Leaves Albany	7:35 p.m.
	Arrives at Corvallis	8:15 p.m.
Trains for Albany.		
No. 5—	Leaves Corvallis	6:30 a.m.
	Arrives at Albany	7:10 a.m.
No. 9—	Leaves Corvallis	12:30 p.m.
	Arrives at Albany	1:15 p.m.
No. 7—	Leaves Corvallis	6:00 p.m.
	Arrives at Albany	6:40 p.m.
No. 11 (Sunday only)—	Leaves Corvallis	11:15 a.m.
	Arrives at Albany	11:58 a.m.
No. 12 (Sunday only)—	Leaves Albany	12:35 p.m.
	Arrives at Corvallis	1:18 p.m.

For further information apply to
GEO. F. NEVINS,
Gen. Pass. Agt., Albany, Ore.

SOUTHERN PACIFIC CO.

Time Card No. 48—Effective June 16.
Toward Portland—Passenger.

No. 16—	5:23 a. m., Oregon Express.
No. 18—	8:40 a. m., Cottage Grove Passenger.
No. 12—	4:45 p. m., Shasta Express.
No. 14—	9:28 p. m., Portland Express.
Toward Portland—Freight.	
No. 222—	10:55 a. m., departs 11:38 a. m., Portland Fast Freight.
No. 226—	10:40 a. m., departs 11:38 a. m., Way Freight.
Toward San Francisco—Passenger.	
No. 11—	11:03 a. m., Shasta Express.
No. 17—	6:42 p. m., Cottage Grove Passenger.
No. 15—	9:56 p. m., California Express.
No. 13—	1:31 a. m., San Francisco Express.
Toward San Francisco—Freight.	
No. 221—	2:33 a. m., San Francisco Fast Freight.
No. 225—	11:55 a. m., arrives 11:25.

Special Eastern Excursion rates.
May 20, 21, June 6, 7, 8, July 3, 4, 5, August 8, 9, 10, September 11, 12, 13. To Chicago and return, \$73.15. St. Louis and return, \$69.15. St. Paul and return, Omaha, Council Bluffs, Sioux City, St. Joe, Kansas City and return \$61.65.
WM. M'MURRAY,
Gen. Pas. Agt.
6-21-tf

CASTORIA.
The Kind You Have Always Bought
Bears the Signature of *Chas. H. Pletcher*

BACK TO STATE OF NATURE

New York Belle Goes Barefooted and Wears a Mother Hubbard

Wouldst be Parisian a la mode? then take off your shoes and stockings, toss cruel corsets out of the fourth story window, don a toga and sandals and with your bare feet peeping out at every step, pass through the main corridor of the Hotel Buckingham, at New York, as did Miss Eva Cortland Palmer recently.

If you aren't frowsy, but have masses of rich, red gold hair, the face of a Minerva and the form of a Venus de Milo, the same sort of a gasping sensation as Miss Palmer had is guaranteed.

Miss Palmer is a society girl of independent fortune and high place. She has been a belle in Bar Harbor and Newport for several years. But more recently she took her celebrated beauty to Paris, whence she returned on the Lorraine yesterday to start quite the most astounding innovation in dress—or the lack of it—that the most blasé New Yorkers have ever seen.

Imagine Fifth avenue at fashion-crowded Fifty-first street, at 3 o'clock in the afternoon and then imagine a beautiful, statuesque girl, heroine of two social continents, tripping up the awe-struck thoroughfare in undeniably bare feet and ankles, with only a Roman toga for dress, no hat on her head and arms bare to the loosely draped shoulders—and you can gain something of the idea of the sensation that Miss Palmer created in her garb.

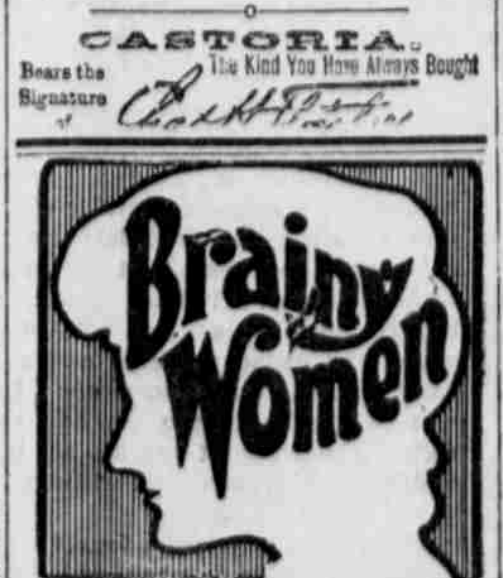
"The corset," announced Miss Palmer, is a physical crime. So are long, tight stockings. They are outrageous—really much worse than drink. The body was made to move freely. All the conventions were made to imprison it. The natural way to live is without braces and straightjackets and belts. Shoes bring corns. No shoes no corns. I think that's jolly good philosophy."

Miss Palmer, when she arrived on the La Lorraine, wore on her feet sandals with loose leather bands to hold them in place; no hosiery or corsets; a flowing gown of light stuff which dropped nearly to her ankles and a two-thirds length cape. On her head she wore a Phrygian hat and appeared altogether cool and comfortable.

Endorsed by the Country.
"The most popular remedy in Otsego county, and the best friend of my family," writes Wm. M. Dietz, editor and publisher of the Otsego Journal, Gilbertsville, N. Y., "is Dr. Kings New Discovery. It has proved to be an infallible cure for coughs and colds, making short work of the worst of them. We always keep a bottle in the house. I believe it to be the most valuable prescription known for lung and throat diseases." Guaranteed to never disappoint the taker, by J. C. Perry's drug store. Price 50c and \$1.00. Trial bottle free.

Samuel Claggett announces that he will not present a No. 2 company of "The Prince Chap" until Cyril Scott is required for his new play. The original company with Cyril Scott as the star, and the production in its entirety as played at the Madison Square and Weber's theaters, New York, will be the only organization playing "The Prince Chap" until early next year. It will be presented at the opera house this Tuesday evening.

CASTORIA.
The Kind You Have Always Bought
Bears the Signature of *Chas. H. Pletcher*



APPRECIATE A GOOD THING WHEN THEY SEE IT AND THAT IS WHY EPPLEY'S PERFECTION BAKING POWDER HAS WON POPULAR FAVOR. IT IS PUT UP IN GLASS JARS, WHICH ARE FAR SUPERIOR TO TIN CANS. EPPLEY'S PERFECTION BAKING POWDER IS A HOME PRODUCE—MANUFACTURED BY C. M. EPPLEY, SALEM, ORE.

A SQUARE DEAL

AND A FAIR TRIAL OF OUR FARM IMPLEMENTS AND MACHINERY OF ALL KINDS. IF YOU ARE NOT SATISFIED WITH A FAIR TRIAL YOU NEED NOT BUY.

I SELL TRACTION AND STATIONERY ENGINES, NICHOLS AND SHEPARD'S RED RIVER SEPARATORS, HAY BALERS, STREET AND ROAD GRADING MACHINERY.

WE HANDLE THE BURG WAGONS, ENGER BUGGIES, HACKS AND CARRIAGES.

WE ARE AGENTS FOR THE ADRIANCE, BUCKEYE MOWERS, CLIPPER PLOWS AND BLUE RIBBON CULTIVATORS, ALSO SOME SECOND HAND FARM IMPLEMENTS AND WAGONS VERY CHEAP.

PAINTS, OILS AND VARNISHES AT WHOLESALE AND RETAIL, GLASS AND STAINS OF ALL KINDS, AND PAINTERS SUPPLIES.

BUGGY TOPS, DASHBOARDS, WHIPS, ROBES, ETC.

CORRESPONDENCE SOLICITED, CIRCULARS AND DESCRIPTIVE CATALOGUES FURNISHED ON APPLICATION.

GEO. B. JACOB, Prop.

PHONE 464 MAIN COR. FRONT AND PINE STREETS

USE SELF RISING

Allen's B. B. B. Flour

For Boston Brown Bread, Griddle Cakes, Muffins and Plum Pudding.
ALLEN'S B. B. B. FLOUR CO., INC., SAN JOSE, CAL.

NEWPORT

The Ideal Pacific Coast Resort on YAQUINA BAY

Comfortably and quickly reached from SALEM via Southern Pacific to Albany, thence Corvallis & Eastern Railroad.

Round trip rates from SALEM, \$5.00 for season tickets, good for return until October 31st, and \$3.00 for three day tickets, good going Saturdays and returning Monday following date of sale—all tickets honored for going or return trip from Albany on Corvallis & Eastern "every Sunday" excursion train leaving Albany 7:30 A. M. and returning leave Newport 5:30 P. M.

For further information call on ticket agent Southern Pacific, Salem, Corvallis & Eastern, Albany, or
GEO. F. NEVINS,
General Passenger Agent, Corvallis & Eastern Railroad, Albany, Or.

Farmers Again in Gloom.

Spokane, Wash., Sept. 2.—A heavy rain, extending from North Idaho through the Palouse country and into the Big Bend district, last night once more plunged the farmers into gloom. The downpour was steady and heavy, and gave promise of lasting for hours. The wheat, which had just begun to dry, is once more thoroughly drenched. The temperature dropped with the arrival of the storm, and bank after bank of clouds is piling up. Wheat growers disagree about the damage done, some asserting that the grain is only bleached, while others say it is sure to sprout.

Rosalie and Colfax were visited by showers in the afternoon, which turned into a steady rain at nightfall. Lewiston, Idaho, was in the path of the storm, and crop prospects are dismal. In the Big Bend the rain started in the afternoon and kept it up steadily all night. About Davenport farmers predicted that the fields were thoroughly drenched, and that the wheat in shock is wet clear through.

Natural Deduction.

Actyn Barnes—I see that in the new version of "Uncle Tom's Cabin" there are no bloodhounds.

Mac Booth Rantington—Aha! I knew it wouldn't be long before Eliza would be chased over the ice by a sixty-horsepower touring car!—Puck.

Acute Rheumatism.

Deep tearing or wrenching pains, occasioned by getting wet through; worse when at rest, or on first moving the limbs and in cold or damp weather, is cured quickly by Ballard's Snow Liniment. Oscar Oleson, Gibson City, Ill., writes, Feb. 16, '02, "A year ago I was troubled with a pain in my back. It soon got so bad I could not bend over. One bottle of Ballard's Snow Liniment cured me." Sold by D. J. Fry.

Might Be Worse.

Tom Pitch—Merciful felines! I am sure I have been hit by at least a hundred old shoes.

Miss -Maltese—Cheer up, Tom. Suppose you were in Holland, where they have wooden shoes?—Philadelphia Inquirer.

"Everybody Should Know"

says C. G. Hayes, a prominent business man of Bluff, Mo., that Bucklen's Arnica Salve is the quickest and surest healing salve ever applied to a sore, burn or wound, or to a case of piles. I've used it and know what I'm talking about." Guaranteed by J. C. Perry, druggist, 25c.

VETCH AND CHEAT SEED

We have a limited amount of each on hand, and if you will need any better put your order in early, as the supply will not equal the demand.

Tilson & Co.

151-161 High Street
Phone 139 Salem, Or.



ICE CREAM

Is always seasonable, but surely never quite so thoroughly appreciated as during the hot summer weather. Our Ice Cream and Water Ices are finely flavored and carefully made of the

CHOICEST AND PUREST materials. It will cost you but little to please the whole by treating to Ice Cream today.

THE SPA

No. 382 State Street.

Hotel St. Philip

Fourth and Fifth and Burnside Streets, Portland, Oregon.

First class European Hotel. Modern conveniences. \$1.50 per day and up. Union car will land you at the door.

H. M. PIERCE, Prop.

SALEM BRICK YARD

A. A. HUBTON, Prop.

Bricks always on hand, in car lots or otherwise. Pressed brick made in Oregon. Yard on State street, south of 1st.

-7-1-tf