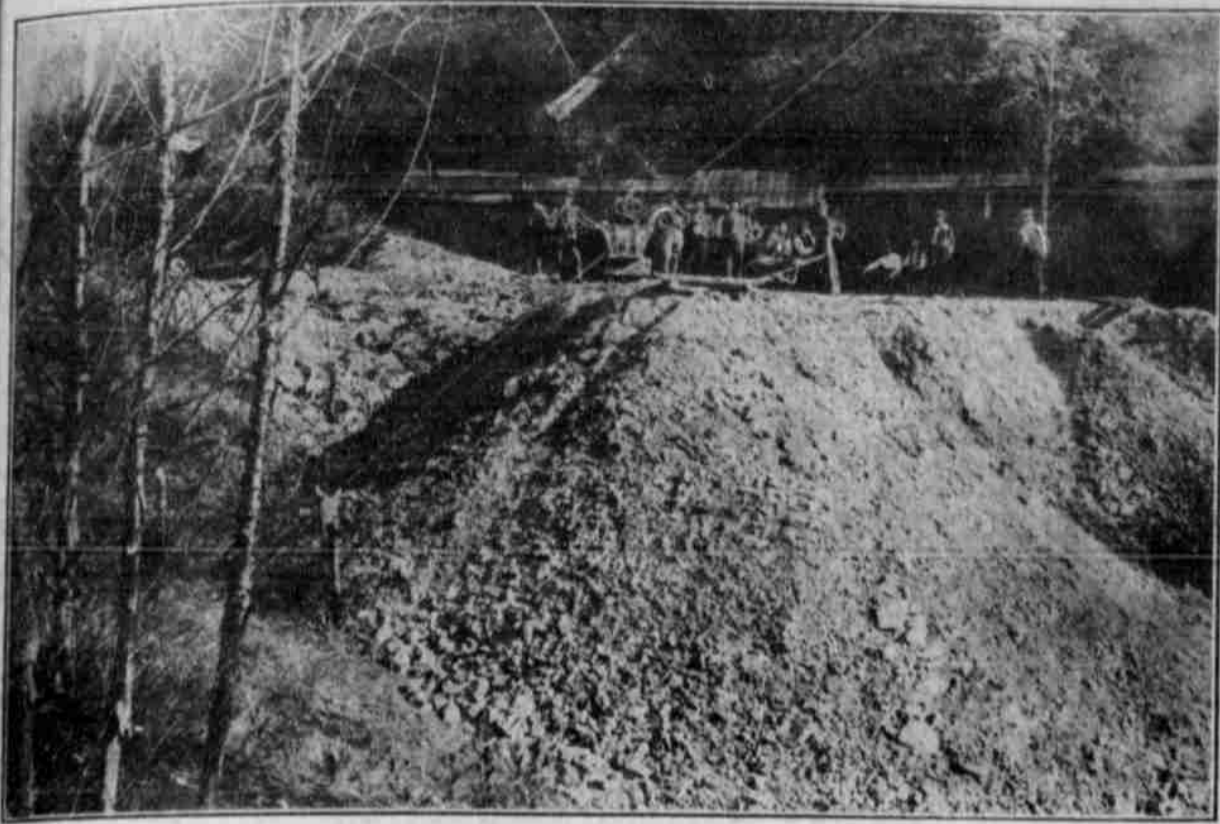


A GRAND FREE EXCURSION



Old Flume and Dump at Mouth of Tunnel, Lee's Creek Gold Mines

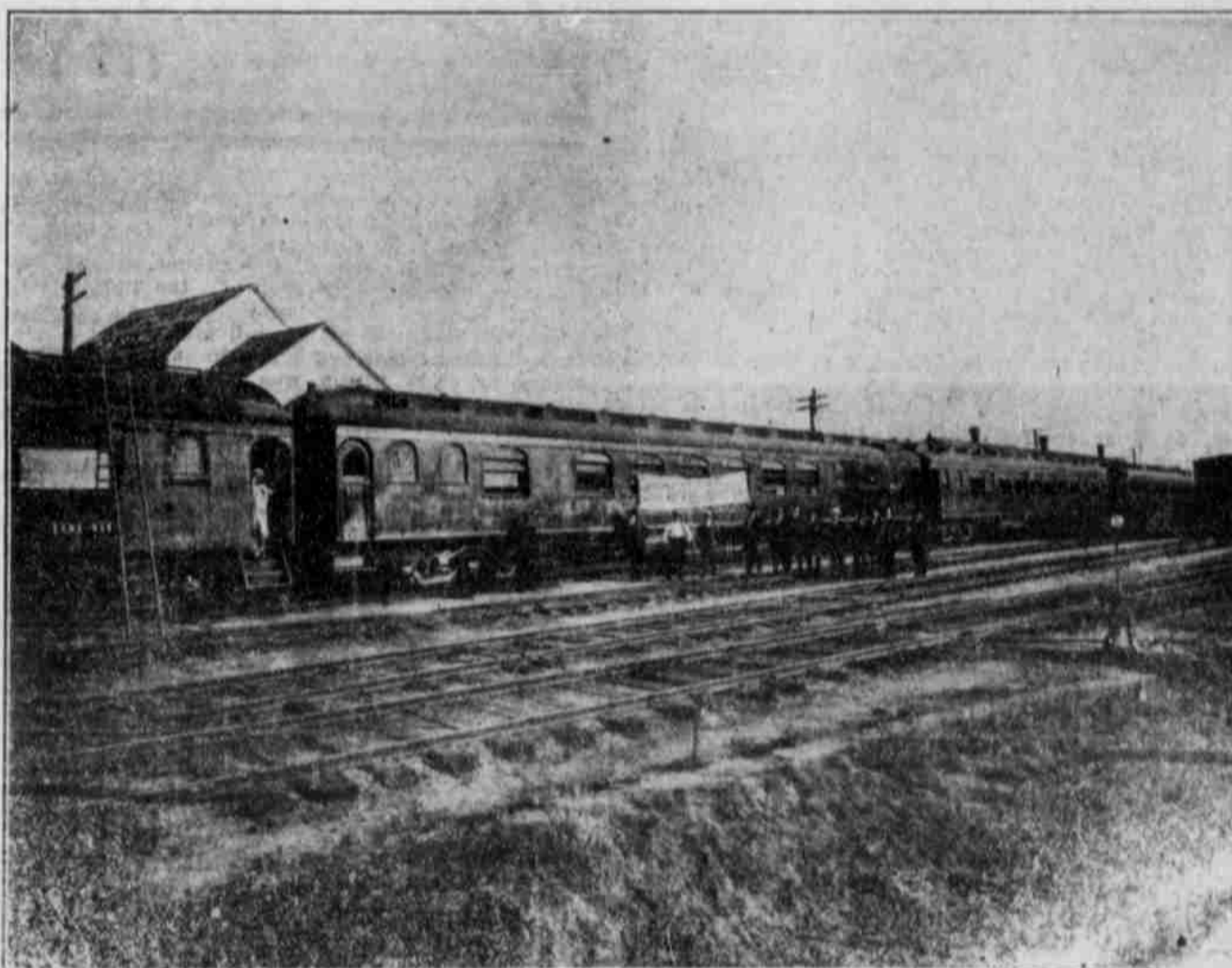
TO THE
**LEE'S
 CREEK
 GOLD
 MINES**
 AT
Myrtle Creek
 OREGON



Satisfied Stockholders at Lee's Creek Gold Mines, August, 1906

SUNDAY, MARCH 3rd, 1907

LEAVING PORTLAND AT 11:30 O'CLOCK SATURDAY NIGHT, ARRIVING AT MYRTLE CREEK 6 O'CLOCK SUNDAY MORNING. RETURNING, LEAVE MYRTLE CREEK AT 10 O'CLOCK SUNDAY NIGHT, ARRIVING IN PORTLAND MONDAY MORNING AT 7 O'CLOCK. AFTER EATING BREAKFAST IN MYRTLE CREEK, YOU WILL BE TREATED TO A DELIGHTFUL STAGE RIDE OF 12 MILES UP NORTH MYRTLE CREEK AND LEE'S CREEK YOU WILL SPEND THE DAY IN THE MOUNTAINS, COMMUNING WITH NATURE AND EXPLORING THE GREATEST DEPOSIT OF PLACER GOLD ON THE PACIFIC COAST AND PROBABLY THE LARGEST IN THE WORLD. THIS WONDERFUL TREASURE BED OF NATURE HAS BEEN WORKED FOR THE LAST THIRTY YEARS, IN A CRUDE WAY, WHEREVER IT WAS POSSIBLE TO OBTAIN A LITTLE WATER. LESS THAN FIVE ACRES



HAVE BEEN WORKED, WHICH HAS YIELDED A GROSS OUTPUT OF MORE THAN \$100,000 IN COARSE GOLD. BY THE FIRST OF MAY WE WILL HAVE THIS PROPERTY EQUIPPED TO HANDLE TWO ACRES OF THIS FABULOUSLY RICH GRAVEL DEPOSIT EVERY 30 DAYS, SUFFICIENT WATER BEING DEVELOPED TO RUN FROM THREE TO FIVE GIANTS EVERY DAY IN THE YEAR. YOU MUST SEE THE PROPERTY, WITH ITS MILES OF DITCH, FLUMES AND TUNNELS, PIPE LINES, ETC., TO APPRECIATE ITS WONDERFUL POSSIBILITIES. IT CONTAINS NEARLY 1,000 ACRES OF RICH PLACER GROUND, MILLIONS OF FEET OF THE FINEST TIMBER IN THE STATE, AND ONLY 12 MILES FROM THE MAIN LINE OF THE SOUTHERN PACIFIC RAILROAD.

REMEMBER: This Trip, Including R. R. and Pullman Fare, as well as your Meals and Stage Fare, Absolutely FREE

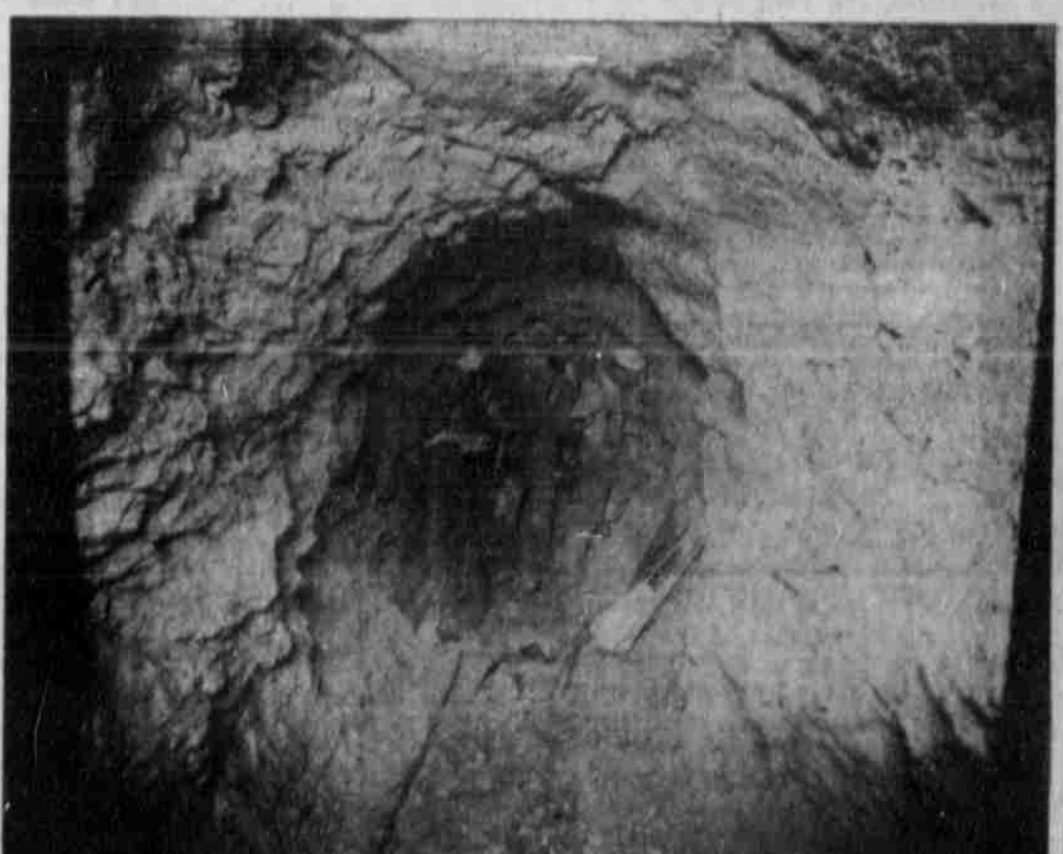
To all who will sign an application blank to buy 5,000 shares or more of Lee's Creek Gold Mines at 2 cents per share, if subscribed before February 15, or 2 3-4 cents per share if signed any time after the 15th and before we leave for the property, on the following conditions: That if, after you have seen this property, and find it as represented in every respect, you will pay, before you leave the property, at least 25 per cent of your subscription in cash and the balance either cash when you return, or in 3 equal monthly installments YOU WILL BE UNDER NO OBLIGATION TO TAKE THIS STOCK UNLESS YOU FIND THE PROPERTY AS REPRESENTED. ISN'T THAT FAIR? IT IS OUR WAY OF DOING BUSINESS.

OUT-OF-TOWN PURCHASERS :



Miners' Cabin at Lee Creek Gold Mines.

CAN TAKE ADVANTAGE OF THIS EXCURSION BY SENDING IN THEIR APPLICATION AND MEETING OUR TRAIN AT ANY OF THE FOLLOWING POINTS: PORTLAND, WOODBURN, SALEM, ALBANY, JUNCTION CITY, EUGENE AND ROSEBURG. BRING OR SEND YOUR APPLICATION TO THE OFFICE, OR SEND US A CARD AND WE WILL SEND A REPRESENTATIVE, WHO WILL GIVE YOU ALL DESIRED INFORMATION.



In tunnel through which water will be brought from North Myrtle Creek to supply Giants on Lee Creek.

COMMONWEALTH TRUST COMPANY
 STOCK AND BOND DEPARTMENT -:- Sixth and Ankeny Streets -:- PORTLAND, OREGON