

SOCIAL PAGE.....

...and Woman's Department

Welcomes Pastor Back.
A reception was given the returned pastor, Rev. D. H. Leech, and his estimable family, at the M. E. church of Woodburn Monday evening. All were happy over the fact that Rev. Leech had been reappointed to this charge, and a large assemblage of the admirers of the pastor and his family fully attested this at the gathering. There was instrumental music by Miss Cowles, Miss Lola Armes and Miss Alma Herschberger, vocal selection by Misses Landon and Wilde and Messrs. G. A. Landon and S. T. Johnson, an address of welcome by Mr. E. P. McCormac, introduction of pastor by Mr. J. A. Austin, and response by Rev. and Mrs. Leech, then all joined in singing, "Blest Be the Tie That Binds." Refreshments were served and a social time enjoyed.

Engagement Announced.
Mr. and Mrs. C. E. S. Wood, of Portland, announce the engagement of their elder daughter, Miss Nan Wood, to Mr. David T. Honeyman. Miss Wood is the leader of Portland's younger set, and is highly accomplished in every way. She was one of the bridesmaids at the brilliant New York wedding of Miss Roosevelt, cousin of Allice Roosevelt-Longworth, who was also a bridesmaid.

Mr. Honeyman is one of Portland's solid young business men, and is treasurer of the large Honeyman Hardware Company, and is popular in society circles. Both are well-known throughout Oregon.

WHAT IS WORN.

Shirt Waist That Will Be Smart This Fall—Drown Still Worn.

The newest of the tailored fall shirt waists are made of China silk, preferably in white, with cuffs and collars of a contrasting color. The shades best liked for this novel touch are yellow, blue or green. The collar is a high turnover, with stitched edges, and is worn with a broad bow of ribbon in the same color. These bows are newer than the four-in-hands.

In French linen shirt waists there is a new model with small box plaits running from neck to waist. These plaits are pressed, but not attached. The sleeves are arranged in the same



GOWN OF STRIPED WOOLLEN.

way, with the plaits going from elbow to wrist instead of the more usual way, from shoulder to elbow.

Brown, it is predicted, will not yield first place to any other color this winter. There is every reason to think that it will be a season of somber shades. The dull leaf browns and chestnuts, with a hint of red in their warm depths, are to be the tones most used.

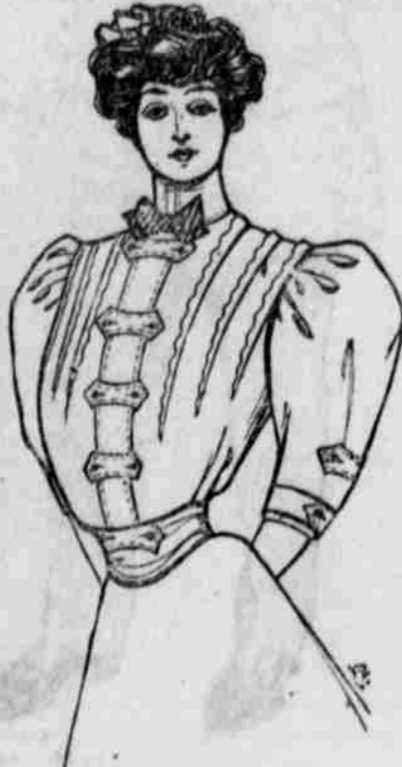
A pretty fall gown is illustrated. The material is a striped woolen in brown and tan shades. Vest, collar and cuffs are of brown velvet.

CHIC STYLES.

Hats With Strings a Fashion Fossil—Middy-Tan Suede Gloves Modish.
There is an attempt made to introduce hats with strings this fall. As yet nothing but old ladies' bonnets have appeared equipped, except this

latest model of a toque that comes with velvety bunches of ribbon, which may look quite demure when worn by a pretty young girl.

Everybody is wearing suede gloves with closed wrists. It has become the mode to take tea and sometimes luncheon without removing the gloves.



FRENCH FLANNEL BLOUSE.

perhaps because gloves with closed wrists are so hard to get off. Even in the case of black or white costumes tan suede gloves are worn.

Lace veils should be chosen with extreme care. In those veils there is a tendency toward heavy borders, which hide the lower part of the face. The style at present is to draw the veil rather tightly from the chin in a neat line to the back of the hat brim, and there the ends tie in a bow.

Parisian rumor has it that long earrings are to be worn. In fact, they are already being shown in the jewelry shops to some extent.

The blouse illustrated is one of the new fall styles designed for French flannel. The novelty lies in the button trimmed straps.

JUDIC CHOLLET.

Connecticut Beekeepers' Association.
Hartford, Conn., Oct. 12.—The fifteenth annual meeting of the Connecticut Beekeepers' Association, which was held here today, proved to be very successful and instructive. The association, while seeking to promote scientific and practical bee culture, is aiming to advance the interest of both products and consumers of honey, fruit growers, farmers and horticulturists. The two most important subjects discussed were "what is the best race of bees to keep for profit" and "Sale of Adulterated Honey in Connecticut and Its Prevention."

Cures Winter Cough.

J. E. Gover, 101 N. Main St., Ottawa, Kan., writes: "Every fall it has been my wife's trouble to catch a severe cold, and therefore to cough all winter long. Last fall I got her a bottle of Horehound Syrup. She used it and has been able to sleep soundly all night long. Whenever the cough troubles her, two or three doses stops the cough, and she is able to be up and well." 25c, 50c and \$1.00.
Sold by D. J. Fry's drug store.

THE MAID AND THE MUMMY

"The Maid and the Mummy," Richard Carle's merry musical play, which is to be the attraction at the Grand opera house tonight is in two acts. The first is laid in the curio store kept by Washington Stubbs, a brokendown theatrical manager, who is selling his properties as genuine antiques; the second act is laid in the Egyptian ball room of Dr. Elisha Dobbins, in New York City. The scenic artist has painted a wonderful scene for the second act, and the gowns worn by the Egyptian queens, by the Polly and the Julia girls in this act, are the most expensive ever used by any theatrical organization.

There are fourteen chorus girls in "The Maid and the Mummy" who, at a moment's notice, could take the part of any of the principals. These fourteen are the cream of the thirty girls that sing and dance in the merry musical melange by Richard Carle and Robert Hood Bowers. The chorus is the largest, handsomest, best dressed, best drilled, best dancing and best singing organization in America. The girls were selected by Mr. Carle from among more than 100 in New York, and Chicago. It is a privilege to belong to the chorus of "The Maid and the Mummy," as the company carries a special singing and a special dancing instructor, who devotes all their time to giving the girls instructions.

The play has a record of three months in New York, three months in Philadelphia and three months in Chicago. It is seldom that any musical piece appeals to such a wide class of theater-goers as this one. The popularity of "The Maid and the Mummy" is explained by the author, who says he tried to combine some of the best points of musical comedy, comic opera, burlesque, and extravaganza, in this one piece.

He has a splendid story, well told, characters, widely varying and a chorus that for beauty and dancing abilities is unmatched in America.

High School Society Meets.

The Desmosthenes literary society at the high school has reorganized for the ensuing school year and is starting out with considerable enthusiasm. Several new members are expected to affiliate themselves with the organization which is in a flourishing condition. The attendance at the last meeting was large and the encouraging feature of the initial meeting of the year was the presence of many freshmen and the keen interest evinced by the members of the faculty for the welfare and progress of the society.

The program consisted of an address by Floyd Utter; piano duet, Blanche Kraus and Eva Martin; reading, Blanche Liston; vocal duet, Eva Fisher and Ethel Cross; violin solo, Joy Turner. Professor Smith made some remarks appropriate to the occasion and work of the society. The program was carried out in its entirety and was well received.

A Badly Burned Girl.

or boy, man or woman, is quickly out of pain if Bucklin's Arnica Salve is applied promptly. G. J. Welch, of Tekonsha, Mich., says: "I use it in my family for cuts, sores and all skin injuries, and find it perfect." Quickest pille cure known. Best healing salve made. 25c at J. C. Perry's drugstore.

Saleswomen's Peril

GRAVE DISEASES, DUE TO STANDING

Facts About Miss Merkley's Dangerous Illness and Complete Cure

Have you ever thought why so many women or girls rather walk an hour than stand still for ten minutes?



Miss Margret Merkley

It is because most women suffer from some derangement of their delicate organism, the discomfort of which is less trying when they are in motion than when standing.

In some states laws compel employers to provide resting places for their female employees.

But no amount of law can regulate the hard tasks of these women. They must get the strength which this work demands or run the risk of serious diseases and the surgeon's knife.

Read the experience of Miss Margret Merkley, 275 3d Street, Milwaukee, Wis.:

Dear Mrs. Pinkham—
"Gradual loss of strength, nervousness, bearing-down pains and extreme irritation compelled me to seek medical advice. The doctor said I had diseased organs and ulceration, and advised an operation if I wanted to get well. I objected to this and decided to give Lydia E. Pinkham's Vegetable Compound a trial. I soon found that all the good things said about this great medicine were true. The ulceration soon healed, headache, dizziness and nervousness disappeared, and in a short time I was strong, vigorous and perfectly well. I wish every working girl who suffers would try Lydia E. Pinkham's Vegetable Compound."

Lydia E. Pinkham's Vegetable Compound is a vegetable tonic which invigorates and strengthens the entire female organism, and will produce the same beneficial results in the cases of other sick women as with Miss Merkley.

DO YOU KNOW

That when you are using
**EPPLEY'S
PERFECTION
BAKING POWDER**
you are using the best
made right here at home.

C. M. EPPLEY
Manufacturer
Salem, Oregon

White House Restaurant

GEORGE BROS. Proprs.
Is prepared to accommodate any sized crowd at any time of the day or night.
Phone Main 196 State St.
Meals served at all hours.

Don't buy your winter supply of flour until you have tried a sack of

NEW PERFECTION FLOUR

MADE BY CAPITAL CITY MILLS

It is the best flour ever sold in Salem.
Remember our cereals are strictly up-to-date. We have the latest up-to-date mill on the coast. Try it.
The mill that makes Salem famous as a wheat market.
FOR SALE BY ALL DEALERS.

BRYANT & REEDER



CHAS. K. SPAULDING, President. B. C. MILES, Sec. and Treas.

Chas. K. Spaulding Logging Co.

Manufacturers of Oregon Pine, Ash and Maple Lumber SALEM, OREGON.

Highest Price

For POULTRY AND EGGS POTATOES ONIONS AND ALL PRODUCE

CAPITAL COMMISSION CO.
267 Commercial St.

Gold Dust Flour

Made by THE SYDNEY POWER COMPANY, Sidney, Oregon. Made for family use. Ask your grocer for it. Bran and shorts always on hand.

P. B. Wallace AGENT

EXTENDING SUMMER EXCURSION RATES

To Newport and Yaquina, Which to People Wishing to Enjoy Nature's Beauties, Proves so Popular—Salmon Fishing in Full Blast:
The low round trip rates, season and three-day in effect from all points on the S. P. and C. & E. railroads to Newport and Yaquina during the summer, which have proved so popular with the people wishing to view the beauties of nature and regain health and strength at that magnificent resort, have been extended from September 30th to October 15th. Tickets will be good for return at any time up to and including October 31, 1906.

The months of September and October are the favorite ones at the seaside, when harvest and hopping is over.

Finest Salmon Fishing in the Northwest

will be in full blast. Houses can be rented cheaply and living expenses are at a medium. Ample hotel accommodations for all at low rates.

Through baggage and ticket arrangements same as during the summer will be in effect. Full information on application to S. P. or C. E. agent.

Southern Pacific Time Card, Effective Saturday, Aug. 18.

Toward Portland—Train Arrives. No. 16—5:30 a. m., Oregon express.

No. 14—8:23 a. m., Cottage Grove express.

No. 12—4:49 p. m., Oregon express.

No. 222—11:18 a. m., through fast freight.

No. 226—11:55 a. m., local way freight. Departs 12:45 p. m.

Toward San Francisco. No. 15—10:56 p. m., California express.

No. 13—6:23 p. m., Cottage Grove express.

No. 11—10:38 a. m., California express.

No. 225—11:25 a. m., local way freight. Departs at 11:55 a. m.

No. 221—8:20 a. m., through fast freight.

O. C. T. CO

Steamers Pomona and Altona leave for Portland daily except Sunday at 7.10 a. m.

M. P. BALDWIN, Agt

For Railroad Work

Men and teams wanted by Willamette Construction Company. Apply at office, Ladd & Bush bank building, upstairs. 10-14

CORVALLIS & EASTERN RAILROAD

TIME TABLE NO. 33. Trains From and to Yaquina.

No. 1— Leaves Yaquina 6:55 A.M. Arrives at Corvallis 10:45 A.M. Arrives at Albany 11:40 A.M.

No. 2— Leaves Albany 12:10 P.M. Leaves Corvallis 1:05 P.M. Arrives at Yaquina 5:00 P.M.

Trains to and From Detroit.

No. 3— Leaves Albany 7:30 A.M. Arrives at Detroit 12:30 P.M.

No. 4— Leaves Detroit 1:00 P.M. Arrives at Albany 5:55 P.M.

Trains for Corvallis.

No. 8— Leaves Albany 7:55 A.M. Arrives at Corvallis 8:35 A.M.

No. 10— Leaves Albany 3:50 P.M. Arrives at Corvallis 4:30 P.M.

No. 6— Leaves Albany 7:35 P.M. Arrives at Corvallis 8:15 P.M.

Trains for Albany.

No. 5— Leaves Corvallis 6:30 A.M. Arrives at Albany 7:10 A.M.

No. 9— Leaves Corvallis 1:30 P.M. Arrives at Albany 2:10 P.M.

No. 7— Leaves Corvallis 6:00 P.M. Arrives at Albany 6:40 P.M.

No. 11— Leaves Corvallis 11:00 A.M. Arrives at Albany 11:40 A.M.

No. 12— Leaves Albany 12:45 P.M. Arrives at Corvallis 1:35 P.M.

All of the above connect with Southern Pacific Company trains, both at Albany and Corvallis, as well as train for Detroit giving direct service to Newport and adjacent beaches, as well as Breitenbush Hot Springs.

For further information apply to J. C. MAYO, Gen. Pass. Agt. B. H. BOLES, Agent, Albany.

PENNYROYAL'S ENGLISH PILLS

THE DIAMOND BRAND. Ladies! Ask your Druggist for Pennyroyal's Pills in England. They are the best. They are the best. They are the best.

Buy of your Druggist and ask for PENNYROYAL'S ENGLISH PILLS. THE DIAMOND BRAND PILLS. They are the best. They are the best. They are the best.

Reliable. Sold by Druggists everywhere. Pennyroyal's Pills. Philadelphia, Pa. Wm. S. Knapp & Co., Sole Mfrs.

MADAME DEAN'S FRENCH FEMALE PILLS.

NEVER KNOWN TO FAIL. Madam Dean's French Female Pills. They are the best. They are the best. They are the best.

Buy of your Druggist and ask for MADAME DEAN'S FRENCH FEMALE PILLS. They are the best. They are the best. They are the best.

Reliable. Sold by Druggists everywhere. Madam Dean's French Female Pills. Philadelphia, Pa. Wm. S. Knapp & Co., Sole Mfrs.

Sold in Salem by S. G. Street.

Metal Frames

NEW AND ARTISTIC, COMPLETE WITH GLASS TO HOLD PHOTOGRAPHS.....

25c--35c--50c Values **10c EACH**
Special

Sale Closes Saturday, October 20th

Yokohama Tea Store