

REDUCED EXCURSION RATES.

To the Seaside and Mountain Resorts for the Summer Vacations.

On and after June 1, 1905, the Southern Pacific, in connection with the Corvallis & Eastern railroad will have on sale round trip tickets from points on their lines to Newport, Yaquina and Detroit at very low rates, good for return until October 10, 1905.

Three day tickets to Newport and Yaquina, good going Saturdays and returning Mondays are also on sale from all east side points Portland to Eugene inclusive, and from all west side points, enabling people to visit their families and spend Sunday at the seaside.

Season tickets from all east side points Portland to Eugene inclusive, and from all west side points are also on sale to Detroit at very low rates with stop over privileges at Mill City or any point east enabling tourists to visit the Santiam and Breitenbush Hot Springs in the Cascade mountains, which can be reached in one day.

Season tickets will be good for return from all points until October 10. Three day tickets will be good going Saturdays and returning Mondays only. Tickets from Portland and vicinity will be good for return via the east or west side at option of passenger. Tickets from Eugene and vicinity will be good going via the Lebanon Springfield branch, if desired. Baggage on Newport tickets checked through to Newport; on Yaquina tickets to Yaquina only.

S. P. trains connect with the C. & E. at Albany and Corvallis for Yaquina and Newport. Trains on the C. & E. for Detroit will leave Albany at 7:30 a. m., enabling tourists to the Hot Springs to reach there the same day. Trains from and to Corvallis connect with all east side trains on the S. P. Full information as to rates, time tables, etc., can be obtained on application to J. Mayo, Gen. Pass. Agt., C. & E. R. R., Albany; W. E. Coman, G. P. A., S. P. Co., Portland or to any S. P. er C. & E. agent.

Rate from Salem to Newport \$5.00. Rate from Salem to Yaquina \$4.50. Rate from Salem to Detroit \$3.60. Three-day rate from Salem to Yaquina or Newport \$3.00. 6-1-tf



UNION PACIFIC Three Trains to the East Daily. Through Pullman standard and tourist sleeping cars daily to Olympia, Chicago, Spokane; tourist sleeping cars daily to Kansas City; through Pullman tourist sleeping cars (personally conducted) weekly to Chicago; reclining chair cars (seats free) to the East daily.

70 HOURS PORTLAND TO CHICAGO No Change of Cars

Table with columns: DEPART FOR, TIME SCHEDULES, ARRIVE AT. Lists routes to Chicago, St. Paul, and Spokane.

Ocean and River Schedule. For San Francisco—Every five days at 8 p. m. For Astoria, way points and North Beach—Daily (except Sunday) at 8 p. m.; Saturday at 10 p. m. Daily service (water permitting) to Willamette and Yamhill rivers.

For fuller information ask or write your nearest ticket agent, or A. L. CRAIG, General Passenger Agent. The Oregon Railroad & Navigation Co., Portland, Oregon.

CORVALLIS & EASTERN RAILROAD

TIME CARD No. 22.

Table with columns: No. 2 for Yaquina, No. 1 Returning, No. 3 for Albany-Detroit, No. 4 from Detroit, No. 5 for Albany, No. 6 for Corvallis, No. 7 for Albany, No. 8 for Corvallis, No. 9 for Albany, No. 10 for Corvallis. Lists departure and arrival times.

Train No. 1 arrives in Albany at time to connect with the S. P. south bound train. Train No. 2 connects with the S. P. trains at Corvallis and Albany, giving direct service to Newport and adjacent beaches. Train No. 3 leaves Albany for Detroit at 7:30 a. m., arriving there in ample time to reach the Breitenbush hot springs the same day. Train No. 4 between Albany and Detroit connects with the Eugene local at Albany, also with local from Corvallis. Train No. 5 leaves Corvallis at 6:30 a. m., arrives at Albany 7:10 a. m., in time to catch Eugene local to Portland and train to Detroit. Train No. 6 leaves Albany for Corvallis at 2:40 p. m., after the arrival of S. P. northbound overland. Train No. 7 leaves Corvallis at 6:30 p. m., arrives in Albany at 6:40 p. m., in time to connect with the local to Eugene and way points. Train No. 8 leaves Albany for Corvallis at 9:15 p. m., after the arrival of the S. P. local from Portland. For further information apply to J. C. MAYO, Gen. Pass. Agt. T. COCKERELL, Agent, Albany. H. H. CRONISE, Agent, Corvallis.

PAPERS TALK RAILROAD

Hill Boosted to Give Harriman a Black Eye

The Road From Drain to Coos Bay Will Be Constructed

The Newberg Graphic gives a sidelight as the purpose of the Hill banquet at Portland in this paragraph: "The spirit of the Harriman banquet in Portland, given in Portland some weeks ago, as compared with the ovation given Hill Monday night in the metropolis, is indicative of the different manner in which the two railway magnates are looked upon. Great is Hill and greatly to be praised, rings the chorus from Portland—and all Oregon, too, for that matter.

exports and imports over their railroad lines. If they should build a new road to the Siletz timber not a cargo of lumber would go out over the bay; it would be hauled back over the mountains and to the distant ports of Portland and San Francisco.

Coos Bay Harbor: But Coos Bay also expects fair treatment from the rest of the state. It is not to the interest of Oregon to have only one harbor. This report in the Oregonian is not an accident or an oversight. It is a studied policy to keep Coos Bay in the background as a deep-sea harbor. In this Portland makes a mistake. It may have availed in the past to retard the growth of Southwestern Oregon, but the day has passed when capital can longer be intimidated by such shallow methods. The Oregonian belittles not Coos Bay, but itself by this suppression of our advantages.

The day will come when Portland will see this error. Coos Bay will be a deep sea harbor long before it will be possible to begin the dredging of the Columbia. It will not take one-tenth the money to clean out Coos Bay to a depth of forty feet than it will the river. The bay will never fill up again, and the river will be a continuous drain upon the treasury for repairs. Therefore Portland will always need the assistance of our congressmen and should be kind to us now.

Under the title of "Hasslebeck," the Eugene Register has this editorial: "Since the Hill banquet the state of mind of Portlanders needs explanation. The valley guests who attended the function returned home in their usual peaceful and lucid condition. A few years since at a big Chicago banquet the country cousins were herded together and entertained while the Chicago bunch slipped through a back door into the banquet hall and wine and dined themselves to a surfeit. Portlanders are too hospitable and generous to be accused of such a proceeding, and the country guests were treated royally. But there was evidently a locker (Continued on page two.)

Bids for Sewer. Notice is hereby given that sealed bids will be received by the City of Salem at the office of the undersigned at the City Hall at Salem, Oregon, up to 10 o'clock a. m. of October 18th, 1905, for the construction of a six-inch alley sewer through the Charles Cartwright addition to the City of Salem; thence across Capitol street, and thence through lot No. 2, in block No. 86, in said City of Salem, Oregon, to connect with the alley sewer in said block No. 86, to be built in accordance with the plans and specifications thereof now on file in the office of the City Recorder.

Each bid must be accompanied by a certified check to the value of ten per cent of the amount of the bid submitted, as a guarantee that the bidder will qualify by giving bonds as provided by said specifications, to be approved by the mayor, and enter into a contract with said city for the construction of a sewer in accordance with specifications and bid submitted within six days after having received notice of the acceptance of his bid, said certified check to be forfeited to the City of Salem in case the bidder fails to qualify and execute said contract as aforesaid.

The City of Salem reserves the right to reject any and all bids, and the bid of any person who has bid before or contracted for such work and been delinquent therein will not be received. Plans and specifications can be seen at the office of the undersigned at the City Hall.

By order of the Common Council. W. A. MOORES, City Recorder. 10-4-11t

Notice of Dissolution. Notice is hereby given that the firm of Turner & Inman, attorneys at law, is this day dissolved by mutual consent. All parties indebted to the said firm are requested to make immediate payment to either member of the late firm, who are each authorized to receive and receipt for the same. We shall each continue the practice of law in Salem, and will endeavor in the future, as in the past, to treat our clients right.

Dated at Salem, Oregon, this 7th day of October, 1905. F. A. TURNER, C. M. INMAN. 10-9-3t

A Pleasant Way to Travel. The above is the usual verdict of the traveler using the Missouri Pacific railway between the Pacific coast and the east, and we believe that the services and accommodations given merit this statement. From Denver, Colorado Springs and Denver there are two thorough trains daily to Kansas City and St. Louis, carrying Pullman's latest standard electric-lighted sleeping cars, chair cars and up-to-date dining cars. The same excellent service is operated from Kansas City and St. Louis to Memphis, Little Rock and Hot Springs. If you are going east or south, write for particulars and full information.

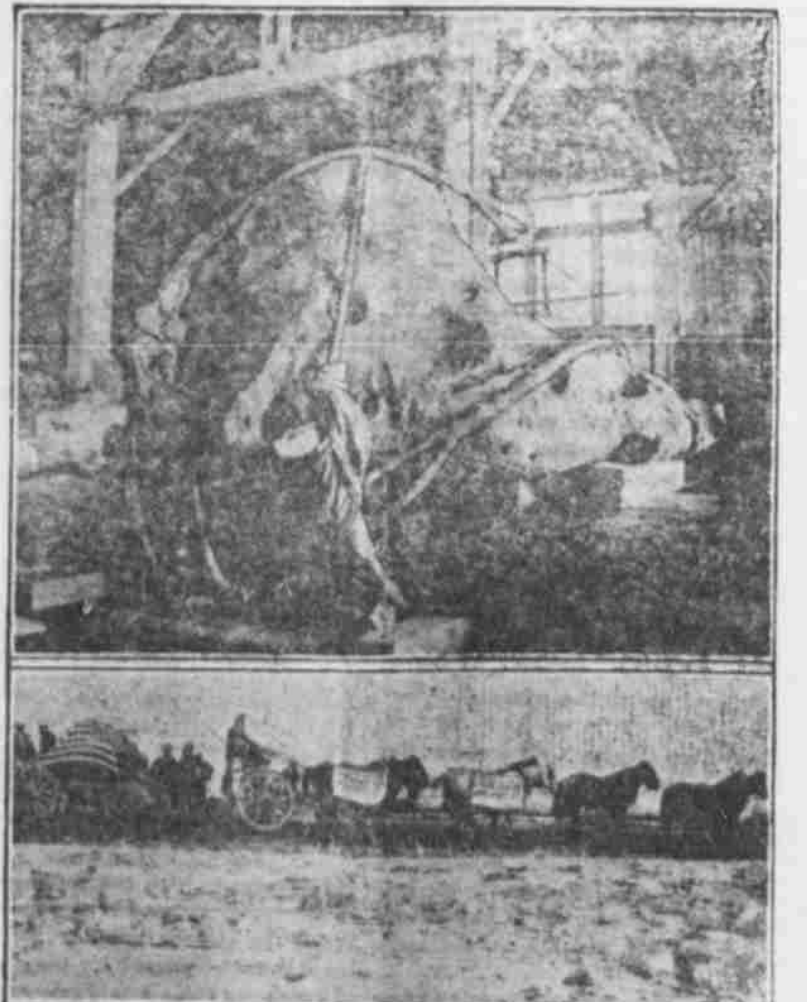
W. C. M'BRIDE, Gen. Agt., 124 Third St., Portland, Ore.

CASTORIA. The Kind You Have Always Bought. Bears the Signature of Charles H. Hitchcock.

Our 25c Coffee. Is as good as some firms sell for 35c and 40c. Do not take our word for it, but try a pound of it, and you will be convinced.

A. L. Harvey The Popular Grocer. Cor. Court and High Sts. Phone 216 Main.

YOUR MEALS Will always be right if you get them at the White House Restaurant. GEORGE BROS. Props. Phone Main 2421. State Street.



THE LARGEST METEORITE EVER FOUND IN AMERICA. A visitor from Mars or some other distant region or planet recently arrived at the Lewis and Clark exposition. This massive meteorite of many tons weight is the biggest shooting star that has ever been found in the western hemisphere and perhaps the heaviest meteorite ever found in any land. It has not yet been weighed, but its weight has been estimated at about eighteen to twenty tons. Twelve of the most powerful horses in Portland were required to haul this mysterious mass of metal from the steamer to the exposition grounds. The meteorite was found in the woods of Clackamas county, Ore., about two miles from Oregon City and fifteen miles from the exposition site, in the autumn of 1902.

MARKET QUOTATIONS TODAY

"Make Salem a Good Home Market."

Poultry—at Stelner's Market. Eggs—Per dozen, 25c. Hens—5@8c. Frys—10c. Ducks—9@10c.

Baker, Lawrence & Baker. Eggs—Per dozen, 26c. Fruits, Vegetables, Etc. Potatoes—25@30c. Onions—1 1/2@.

Tropical Fruits. Bananas—5 1/2 lb. Oranges—45.50. Lemons—44.50@45.00.

Live Stock Market. Steers—2 1/2@. Cows—1 1/2@2c. Sheep—4c. Dressed veal—6c. Fat hogs—5 1/2@.

Baled Clover—\$7.00@7.50. Chest—\$6.50@7. Timothy—\$9@9.50. Grain—\$7@7.50. Bran—\$22.50. Shorts—\$24.50.

Eggs, Butter and Cream. By Commercial Cream Co. Butter—30c. Butter fat—30c at station.

Wheat—58@61c. Flour, wholesale—\$3.65 per barrel. Flour, retail—\$1.00 per sack.

Hay, Feed, Etc. Baled Cheat—\$10. Oats—Choice white, \$1.35@1.40. Millstuf—Bran, \$19.00. Hay—Timothy, \$13.00. Potatoes—\$1.15@1.20.

Poultry—Chickens, mixed, 12 1/2@13c; per lb; hens, 13c per lb; roosters, old, 10c per lb; fryers, 22c per lb; ducks, \$4.00@9.00 per doz; geese 8@9c per lb; turkeys, 17@18c per lb; dressed, 20@21 1/2c per lb; squabs, \$2.50@3.00 per doz.

Pork—Dressed, 7 1/2@8c. Beef—Dressed, 2 1/2@5c. Veal—5@8c. Mutton—Dressed, 6 1/2@7 1/2c.

Hops—Contract, 1905, 16c; 1904 crop, 25c for choice; 23@24c for primes and mediums.

Wool—1905 clip, valley, coarse to medium, 24 1/2@25 1/2c; fine, 26 1/2@28c; Eastern Oregon, 19@22 1/2c. Mohair—Nominal, 30@31c. Butter—Fancy creamery, 20@21 1/2c; dairy, 16 1/2@17c; store, 15@15 1/2c.

CASTORIA. The Kind You Have Always Bought. Bears the Signature of Charles H. Hitchcock.

Gold Dust Flour. Made by THE SIDNEY POWER COMPANY, Sidney, Oregon. Made for family use. Ask your grocer for it. Bran and shorts always on hand.

P. B. Wallace AGENT.

Walter Morley 60 Court Street, Salem.

To Fence Customers. Orders for Woven Wire Fencing for future delivery are now being taken at special discount. One car will arrive about Nov. 1. Orders also taken for plain wire. Prices always the lowest. Quality the best. Fence Posts, Shingles and Gates. Write us for prices now.

Salem Box Factory G. F. MASON, Prop. I am in South Salem, where you will find me for all kinds of fruit trays, orchard boxes and hop baskets. Miller street, Salem. Phone Main 308.

Business College Salem, Oregon. The best school to obtain a knowledge of how to do. Promotion and preferment in business is the result of ability to do. There is a constant demand for competent help. If you can keep books and do stenographic work, there is a place for you.

Can You Do Such Work? It has been years since a young man with a knowledge of book-keeping has completed our short-hand course, simply because they all secure positions before graduating. What better opportunity do you want? In comparison to the benefits derived, it costs but little to secure a usable education. Send for catalogue. W. I. STALEY, Principal.

NEW and SECOND HAND GOODS BOUGHT and SOLD. Highest price paid for second-hand goods of every description. I have a good stock of Tinware, Graniteware, Dishes, Crockery, etc., that I can save you money on. O. L. McPEEK, Phone 1233 Main. 170 Commercial St.

YOUNG MARRIED FOLKS who wish to start housekeeping right should use Wild Rose flour, as then they will never quarrel over bad bread. This flour is unsurpassed for all purposes where flour is used. It makes the lightest, sweetest and most delicious bread or the finest and most delicate cakes and pastry. SALEM FLOURING MILLS.

SHINGLES AND SHAKES—The roof is shingled best if you use the kind of shingles and shakes we sell, and we ask you to note the good wear and economy of the roof for which we furnish the shingles or shakes. We carry a large stock of shingles and shakes of good quality, carefully selected to make a sound, tight, durable roof, and we are always ready to give estimates. Phone 52 Main. GOODALE LUMBER CO.