

NORTHWESTERN STOVE FOUNDRY

A MODERN STOVE-BUILDING PLANT

The Northwestern Stove Foundry is the only exclusive manufacturer of Steel Ranges, Cook Stoves and Heating Stoves in the Pacific Northwest. They make, under their own patterns every kind of a stove and range in use in this territory today, from the small camp stoves for campers and lumbermen, to the Mammoth French Ranges set in brick for Hotel use, as well as a line of heaters, both steel and cast, from the small sizes for bed chambers, through all the different grades, to the giant sizes for heating grades, etc. as well as a line of Hop and Prune Driers in eight different sizes, weighing from 500 pounds to over half a ton each.

A glance through this firm's latest catalogue gives but a small idea of the magnitude of their growth, and the fact that strikes one most forcibly—outside of the accurate details of the many goods they manufacture—is the change that has taken place in recent years, with reference to the use of the all-steel range and heaters, until at the present time their output in steel ranges alone, has grown, from practically nothing, to a figure that makes one stop and wonder where they are all used.

The growth of this firm's business is a vote of confidence in the clear sightedness and ability to meet the wants of their customers, of their able and efficient General Superintendent, Mr. R. B. Fleming, and the business that they are doing today in Oregon, Washington, Idaho, Nevada, Montana and Alaska brings with it the assurance that twenty years of painstaking work, and keeping abreast of the times in stove and range-building, has with it the stamp of approval of their thousands of satisfied customers.

It is safe to say that Superintendent Fleming is one of the best posted men in the country on general foundry practice and sheet metal work of all kinds, and his intimate knowledge of all the details of moulding and stove construction, together with the assistance of an able corps of department superintendents with the broad experience they

each have had in their particular vocations, results in the Northwestern Stove Foundry products being in such a large and ever increasing number of homes.

In their foundry work only the most up-to-date methods of moulding stove plate are practiced. They use the best grades of Scotch, English and American irons, and from the time a mould is made till a finished casting is turned out ready for mounting, the work is under the direction of an able foundryman, and the slightest flaw causes the casting to be sent to the scrap heap.

In the general mounting room there is the same watchfulness. All work is made from original patterns, and in addition there is a complete pattern shop under the direction of a Master Pattern Maker, and this gives ample assurance that each and every piece that goes in a stove or range is perfect in its fit.

In their Steel Range Department they use nothing but the highest grades of American Cold Rolled Polished Steel, and a customer who gets a range in any of the various styles and finishes they make can rest assured that the grade of the material used is the very best.

Their Acme and Toledo steel ranges are built expressly for the fuel used in this section of the country, and the story of their success lies in the way they are put up and the material that is used in the making of them.

These ranges are lined throughout with asbestos, or in other words made of three thicknesses—one of steel, one of asbestos, to hold the heat, and then another of steel. With the oven bottoms reinforced with cast braces to prevent the slightest warping from excessive heat. This method of using the asbestos lining assures a maximum heat on a minimum of fuel, and is in itself a source of great saving of fuel, and at the same time is a guarantee that the largest possible amount of heat will be used as intended, and not in "cooking the cook" as is the case in other styles of ranges without this improvement. Furthermore it causes the heat to be distributed so that the oven is at all times evenly heated, and is ready for baking in 30 minutes or less after lighting the fire.

These ranges are made in a large variety of sizes, 16 in., 18 in., 20 in., 22 in. and 24 in. ovens, with six holes, or solid plates as desired, in either the

square or reservoir style. Also in Double Oven Ranges with one firebox in the same sizes. The main tops of all ranges are of the Panel kind, interchangeable, and are braced from the oven top to prevent any warping.

All ranges are fitted with Duplex grates making them suitable for either wood or coal as fuel, and requiring no labor or taking apart to make the change, which can be made in a second either way, and insures a clean firebox for building a fire each and every time, without the old way of poking and jolting around with a poker trying to get the grate clear enough to get a draft through.

The Extension Firebox, with which all ranges are fitted, permits the burning of much larger wood for fuel than would otherwise be the case, and when it is desired to use coal, there is a blind end liner that fits in the back of the firebox, and thus reduces it to its proper size.

All Oven Doors are Spring Balanced, and are undoubtedly the strongest and most durable, as well as one of the most attractive doors in use today.

The dampers are ample and provide for a quick draft in starting fires, and are easily controlled. All ovens are ventilated into the flue, and the new 1905 ranges will be equipped with Steel Wire Oven Racks, in place of the cumbersome castiron ones now in general use.

The High Closets and Shelves are one of the most useful, as well as attractive features of these perfect ranges. All closets are fitted with Spring Balance Doors, oval style, thus giving more room for large dishes, etc., and the door itself is the simplest, easiest door in use today. No more slamming doors or breaking and upsetting plates.

If there is any one thing about the house that is dear to the housewife's heart it's the kitchen range, and a bright, new range, and one that is easily kept looking so, makes cooking and baking a pleasure. Superintendent Fleming evidently had this in mind when he designed the finish and trimmings of the Acme and Toledo ranges. For a more attractive, and at the same time a better baking range, could not be found. The trimmings of all ranges and high closets are full nickel plated throughout. Perfectly smooth and catch no dirt, and the nickel work is

superior to any on the market today.

The material, workmanship and finish of these ranges make them a high-grade article, and the prices are the lowest. They are the cheapest, most economical, most perfect operating range for Western fuel on the market at the present time. Thousands are sold annually. Repairs furnished in a day's time or less for any part of them.

You can have your range made of full polished steel, with a ground and polished top. No enamel or blacking, always looks well, and very easily kept so. Oven door fitted with thermometers, when ordered, which reduces baking to the easiest part of the cook's work.

If you want a reservoir, get one of the flush-top reservoir ranges, with tank either in galvanized iron, copper or white enamel, of large capacity, and so arranged that the heating of the water to the boiling point is accomplished without additional use of fuel.

They also make a 15-gallon bracket reservoir that sets on brackets to the left of the range; made of either galvanized iron, enameled or copper, plain or nickel plated. All square ranges have the pipe holes for water coils made in each range, and fitted with a cap, so that all that is needed is to turn the cap and the plumber does the rest. No cutting or fitting needed.

They have a department that make nothing but the latest Brick-Set Hotel ranges, made of extra heavy cold-rolled

steel, to be set in brick and fitted with the new improved heavy castiron interchangeable top, in 5-foot, 7-foot, 10-foot and larger sizes as wanted.

Also the Portable Hotel Special all steel cast top ranges, in 4-foot, 4½-foot, 5-foot, 6-foot and 7-foot sizes, the first two in single oven style, and the rest with double ovens and single fire boxes, equipped with their latest patent Drop Oven Door, Hotel and Boarding House style. The only ball bearing Drop Oven Door on the market.

Their Pattern Rooms show row after row of original patterns for stoves and ranges of all descriptions, the names of which a large majority are household words in the Pacific Northwest today, and this assures the prompt filling of orders for repairs for even the most trifling part of any of these standard stoves and ranges.

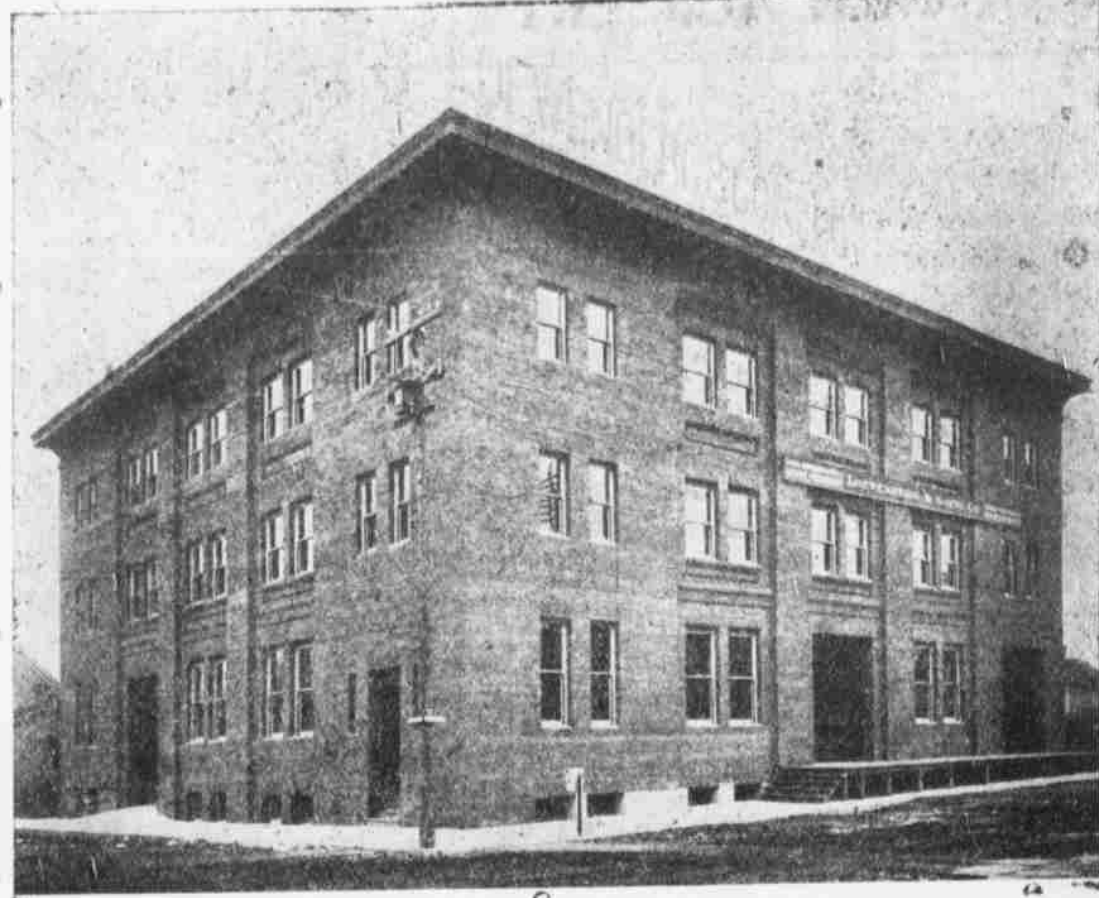
Their line of heating stoves and airtight heaters, includes all of the latest and most substantial designs now on the market, and they carry with them the same high-grade material and workmanship that has made this company's ranges so superior.

A glance at their cast cook stoves reveals all of the standard styles and sizes that first brought this firm's products into such large demand, with every known improvement added to each, and it makes no difference whether you are selecting a small two-hole stove for light housekeeping, or any of the various styles up to the large all-

cast ranges for large families, you can rest assured that your selection was built with the same watchfulness and care in the construction and finish that is the standard of all this firm's products.

Their line of Hop Stoves and Prune Driers has been improved and added to from time to time till today they make every style and size that the Hop and Prune Growers of the Willamette valley have occasion to use, and the attention that has been paid to this particular trade in the past has met with well-deserved success. Specifications and descriptions will gladly be furnished any Grower or Dealer interested by addressing Mr. R. B. Fleming, Superintendent, Salem, Oregon.

You can make no mistake in selecting goods manufactured by this firm. All of their goods are GUARANTEED to give satisfaction, and every city in the Northwest has a dealer that handles these famous stoves and ranges. For the benefit of our local subscribers we would state that the popular firm of Steiner & Berger, on State street, have at all times a complete stock of Acme and Toledo ranges on hand in their various sizes and styles, as well as a complete line of heaters, airtight, cast cook stoves of all descriptions, and hop and prune driers, and they will take pleasure in giving information to visitors, as to any of the goods manufactured by this Foundry.



PORTLAND WAREHOUSE AND DISTRIBUTING POINT OF THE NORTHWEST STOVE WORKS.

WALLACE ORCHARD PRODUCT

Large Quantities of Fine Apples Disposed of at Good Profit

The Wallace orchard, located three miles from Salem, is one of the largest in the state, and this year produced nearly 11,000 boxes of Spitzenberg apples, requiring 15 cars to haul the product to the eastern market.

The crop was sold to the Davidson Packing company of Hood River, but did not go as Hood River fruit, the company simply labeling the boxes "Oregon apples," with the Davidson Packing company's stamp on them.

The quality of the fruit was the very best, and it was free from worms or disease. The orchard contains about 40 acres, and the trees were planted from 12 to 15 years ago, but until three years ago the crops were not profitable. The sale was made early in the season, and \$12,000 was received for the product. It is estimated it cost \$1000 to cultivate, spray and prune the trees, and it required about \$2500 to pick and pack the apples. This would leave a clear profit of \$7500, or an average of almost \$200 per acre.

Mr. C. A. Park, manager of the orchard, in conversing with a reporter, said:

"We kept the trees clean and well pruned. We use three power sprayers and are spraying now. We went over the orchard very carefully, and the apples were thinned out, leaving them from six to eight inches apart on the limbs. The result was that our apples were large and of good color. The color is an essential thing in selling apples, as two-thirds of the surface must be of a good red color in order to bring the top price. Out of the 11,000 boxes we found only 62 boxes that were not classed as 'two-thirds red.'"

"The Willamette valley gave Oregon its reputation for apples, and I hope to see our orchardists reap a share of the benefits of that reputation. If growers would only clean their orchards, spray the trees thoroughly and thin out the apples when they are young, so that the fruit would have a chance to develop, they would soon place the quality of the fruit where they could receive a fair price, and it would open a vast field."

The Davidson company sent an experienced man from Hood River to oversee the packing of the crop, and he insisted that every apple was inspected with care. Very few were rejected, showing that with care in cultivation and growing, the Willamette valley can produce the very best quality of red, rosy-cheeked apples.

The orchard also produced this year 165 tons of Bartlett pears, two carloads of fall pears, and 75 tons of other apples.

About 60,000 waterwheels are used for manufacturing in the United States, yielding 1,300,000 horse-power, or one-quarter to one-third of the whole power used. Of this total 250,000 horse-power is used by the 2000 mills in New England.

A German chemist named Blau has succeeded in liquefying illuminating gas, in that form giving a good light, which is useful in country homes, railway trains, etc. It costs more than ordinary coal gas, but less than electric light.



Z. M. PARVIN, MUS. DOC.

One of the leading music teachers of Oregon. As an author and leader his reputation is not local, but state and national. The results of his teachings are exceptional. A full musical education is given by him in the branches of Voice, Singing, Piano, Harmony, Counterpoint and Musical Composition. Arranges manuscript for those who desire their melodies published in sheet form; teaches Harmony by mail.

A diploma is given when the course is completed. Prepares pupils for professional careers as singers, choir leaders, pianists, teachers, etc.

He is a graduate of such eminent teachers as Dr. Wm. Mason, New York, E. W. Root and W. S. Matthews, Chicago. He has graduated large number of students from Willamette University College of Music (of which he was dean for over 12 years), and a number of other schools, among whom are: Mrs. Hallie Parrish-Hinges, Salem; Miss Frankie P. Jones, New York; Mrs. Marguerite Alderson-Burkhart, Albany; Mrs. Edwin Stone, Albany; Mrs. Anna Krebs-Gillis, Salem; Mrs. Mary Steiner-Denton, Salem; Mrs. Gertrude Stahley-Soule, Portland, and many others who are prominent as singers, organists, pianists and teachers.

Dr. Parvin's prices for lessons have always been reasonable for the quality of work done. Will teach one or two days each week in Portland. In Salem he is found at 407 High street.

Up-to-date Plumbing

In Your Kitchen



Will solve the servant-girl problem, and make life worth living. Sanitary and open plumbing in your house will save doctor bills and keep a firm hold on your health.

Only a Twist of the Wrist

And your rooms are warm when your home is fitted with steam heating apparatus. Now is the time to think and make these comparisons. Use your thinker, and give us your order for the work.



T. M. BARR,

214 Commercial St.

Phone 2371

Capital Lumbering Co.

Manufacturers of and Dealers in every description of

Oregon Fir Lumber

Laths, Fence Posts, etc. Dry Kiln in Connection
Office and Mills Foot of Ferry Street
TELEPHONE, MAIN 981
SALEM, OREGON

History of the Standard Oil Company



IDA M. TARRELL.

McClure-Phillips promise Miss

Ida M. Tarbell's "The History of the Standard Oil Company" for early in December. Among the serious works of the year this one will probably take first place. The book is made from the articles which have been appearing in McClure's Magazine, but has been enlarged and rewritten to include additional information and facts that were disclosed during the serial run of the article. Miss Tarbell, whose "Life of Lincoln" and "Life of Napoleon" give her standing at the head of the leading women historians of America, in telling the history

this first and greatest American trust has also told the history of the rise of the trust problem. She has made a dramatic story of the war now over thirty years old between the Standard Oil trust and the people. Her facts are all supported by documentary evidence, and are reinforced and given life by the personal interviews that the author has had with leading men in all the incidents she describes. The book gives an unprejudiced statement of the facts. Miss Tarbell herself lived many years in the oil districts, and she writes of things and people with which she was intimately familiar.