

Cash Saving Offer

Two First-Class Weekly Papers for the Price of One.

Weekly Journal and Weekly Oregonian, \$2.00.
 Weekly Journal and Orange Judd Farmer, \$1.35.
 Weekly Journal and Tri-Weekly Y. World, \$1.75.
 Weekly Journal and Woodburn Independent, \$1.50.
 Weekly Journal and Gold Beach, Curry County, Recorder, \$1.50.
 Weekly Journal and American Boy, \$1.50.
 Weekly Journal and Courier, Spray, Oregon, \$1.50.
 Weekly Journal and Express-Advances, Lebanon, \$1.60.
 Weekly Journal and Globe, Condon, Ore., \$1.50.
 Weekly Journal and Oregon Mist, St. Helens, \$1.50.
 Weekly Journal and Town Talk Ashland, \$2.00.
 Weekly Journal and Herald, Lakeview, \$1.50.
 Weekly Journal and Men of Tomorrow, \$1.50.

Parties desiring can get the Daily Journal three months instead of the Weekly one year in the above combinations.

HOFER BROTHERS
Salem, Oregon.



Through personally conducted tourist sleeping cars between Portland and Chicago once a week, and between Ogden and Chicago three times a week via the Scenic line.

Through Standard sleeping cars daily between Ogden and Chicago, via the Scenic line.

Through Standard sleeping cars daily between Colorado Springs and St. Louis.

Through Standard and tourist sleeping cars daily between San Francisco and Chicago, via Los Angeles and El Paso.

Through Standard sleeping cars and chair cars daily between St. Paul and Chicago.

Be sure that your ticket reads via the Great Rock Island Route.

The best and most reasonable dining car service.

For information
 T. J. CLARK, Trav. Pass. Agent
 L. B. GORHAM,
 Gen. Agt., 250 Alder St., Portland, Or.

O. R. & N.



AND UNION PACIFIC

3 TRAINS TO THE EAST DAILY.

Through Pullman, Standard and Tourist sleeping cars daily to Omaha, Chicago, Spokane; tourist sleepers daily to Kansas City; through Pullman sleeping cars (personally conducted) weekly to Chicago, Kansas City, St. Louis and Memphis; reclining chair cars (seats free) to the East daily.

DEPART FOR	TIME SCHEDULES From Portland, Or.	ARRIVE FROM
Chicago	Salt Lake, Denver, Ft. Worth, Omaha, Kansas City, St. Louis, Chicago and East.	4:30 p. m.
Portland	9:30 a. m. via Huntington	
Atlantic	Salt Lake, Denver, Ft. Worth, Omaha, Kansas City, St. Louis, Chicago and East.	
Express	5:15 p. m. via Huntington	
St. Paul	Walla Walla, Lewiston, Spokane, Wallace, Pullman, Minneapolis, St. Paul, Duluth, Milwaukee, Chicago, and East.	7:30 a. m.
Fast Mail	6:30 p. m. via Spokane	

70 HOURS 70
PORTLAND TO CHICAGO
No Change of Cars

OCEAN AND RIVER SCHEDULES From Portland:

5 p. m.	All sailing dates subject to change. For San Francisco sail every 3 days.	4 p. m.
Daily except Sunday 8 p. m. Saturday 9 p. m.	COLUMBIA RIVER To Astoria and Way Landings	4 p. m. at 50th St.

WILLAMETTE RIVER
 Steamer Ruth leaves Salem for Portland and way landings on Tuesday, Thursdays and Saturdays, about 10 a. m. For Corvallis and way landings, Mondays, Wednesdays and Fridays at about 1 p. m.
 A. L. CRAIG, M. P. BALDWIN,
 Gen. Pass. Agt. Agt. O. R. & N. Co.
 Portland, Ore. Salem, Ore.

Electric Lighting

SAFEST
 CLEANEST
 MOST
 CONVENIENT

No Matches. No Odor.
 No Smoked Ceilings.
 A Good Strong, Clean,
 Clear Light of.....

16 Candle Power

costs
 ONE CENT PER HOUR.
 Power at Low Rates
 per Horsepower.

**SALEM LIGHT, POWER
 and
 TRACTION COMPANY.**

SALEM WATER COMPANY

OFFICE CITY HALL
 For water service apply at office. Bills payable monthly in advance. Mak. all complaints at the office.

S. C. STONE, M. D.
 ...PROPRIETOR OF...

STONE'S DRUG STORES

SALEM, OREGON.

The stores (two in number) are located at No. 235 and 297 Commercial street, and are well stocked with a complete line of drugs and medicines, toilet articles, perfumery, brushes, etc.

Has had some 25 years experience in the practice of medicine, and now makes no charges for consultation, examination or prescription.

L. D. HENRY Real Estate and Renting Agent

Good Bargains—Fair Treatment—List Your Property with me.
 230 Commercial St.

THE ELITE CAFE

208 Commercial Street.

OYSTERS

Served in the best of style and with the most suitable accompaniments.

E. ECKERLEN, Proprietor

TELL ME

Where are you going and when, and I will tell you what the rate will be, when you will reach your destination and why you should take the Burlington.

No matter whether Chicago, Omaha, Denver, Kansas City or St. Louis is the city you want to reach, your ticket should read "via the Burlington."



A. C. SHELDON, General Agent.
 100 THIRD STREET,
 PORTLAND.

White Bronze Monuments



Never chip, crack, tarnish, moss or corrode. The only kind that never needs cleaning. For the truth of the above see them in all the Salem cemeteries; some of them have been there for 17 years. If you want the very best at half the price of stone that will last ten times as long, call on or address

T. B. WAIT, 190-192 Commercial St. Salem, Oregon.

C. H. MACK DENTIST

Successor to Dr. J. M. Keene, is White Corner, Salem, Oregon. Parties desiring superior operations at moderate fee in any branch are in aspects request.

Harper's Whiskey is the best. Get some into your vest. Gus Schreiber keeps it. And you know the rest.

FARMER'S HOME
 153 State Street.

INTO THE NEW QUARTERS

Arranging to Move the Postoffice

First Mail Will Be Delivered April 1

Extra Men at Work to Get Everything in Readiness

It is the present plan of Postmaster Hirsch to make the first delivery of mail from the new Salem postoffice on Wednesday, April 1. Orders have been received from the government authorities directing that the new post office building be occupied on that date. The initial steps towards accomplishing the removal of the local mail department to the new quarters are being taken this week. To remove a post office department of the proportions of the Salem post office is no small undertaking. The task must be so performed that the regular operation of the department in the handling of the mails is not to be interrupted, for nothing is permitted to interfere with this important department of the federal government.

An increased force of workmen is employed in hastening the construction work on the new building and Contractor Campbell expects to have the main part of it entirely completed and ready for occupancy on the date that has been designated by the government authorities. The entire lower floor and the basement will be finished, while the upper story of the building will remain in an uncompleted state and will be finished later. At the present time there is no pressing need for the quarters that are arranged on the upper floor, since the postoffice force will have ample accommodations on the lower floor and the basement.

The grounds surrounding the building will not present a very creditable appearance. The unexpended balance of the appropriation that was made for the building will be insufficient to place the square in the condition that the building deserves. It will be necessary to defer this work of beautifying the grounds until an additional appropriation can be secured from congress. The walks and approaches to the building are being established; but otherwise no improvements will be attempted now. Circular cement walks will extend from the Church street corners of State and Court streets to the main entrance at the west side of the building. Near the west corners of the building and within a few yards of the structure the cement walks will divide and extend around either end of the building and unite with the bicycle paths on the Court and State street sides of the post office and within a few feet of the Cottage street side of the square. Patrons of the office are selecting their mail boxes in the post office as it will be arranged. There will be the same number of boxes for rent, about 500 and the rental will be 50 and 75 cents per quarter, according to location. Box selections are now being made, unexpired rentals in the present building, of course, being applied on the boxes in the new buildings.

GRAIN-O THE PURE GRAIN COFFEE

The coffee habit is quickly overcome by those who let Grain-O take its place. If properly made it tastes like the best of coffee. No grain coffee compares with it in flavor or healthfulness.

TRY IT TO-DAY.
 At groceries everywhere; 15c. and 25c. per package.

BUSINESS MEN INVESTIGATE. THE VAN ALSTINE GORDON & CO.,

Mercantile Agency & Tradesmen's Alliance office 275 1-2 Commercial St. Cor. Court. A. R. Morgan & Co. Managers Secures commercial reports for jobbers, by paid report system; collects accounts, good, bad and indifferent. No membership or docket fee and no charges unless collections are made. PHONE MAIN 501.

CASTORIA.
 The Kind You Have Always Bought
 Bears the Signature of
 J. C. Watson

Store News | Store News | Store News

A Week of Extraordinary Bargains.

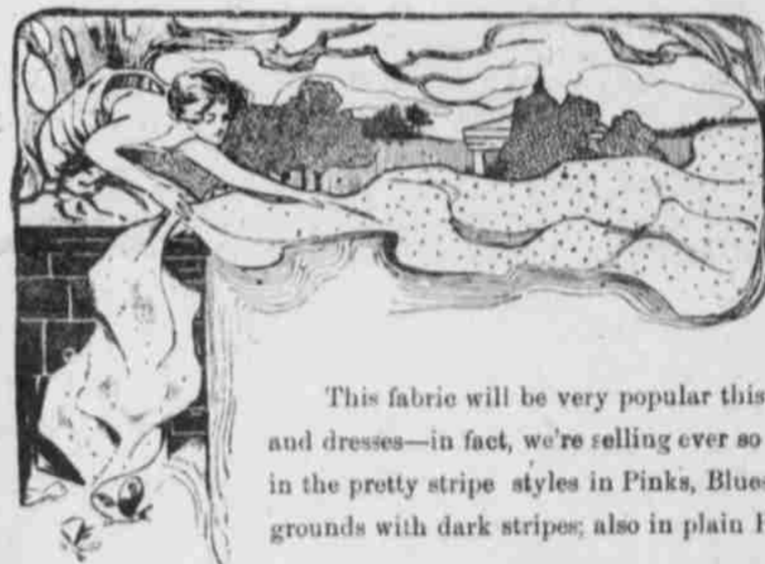
Crowd Pullers!

Here's a a bit of news that will surely bring crowds to the Dalrymple Store every day next week. Long-winded arguments are unnecessary to convince you these values are extraordinary. If you are in need of any of the goods on sale now's the time to take advantage of the low prices. Monday's Crowd Puller will be Turkish Towels, Tue day's will be a big sale of the new Japanese Crepe—a popular fabric for 1903, Wednesday, Ladies' Suits at half price, Thursday, a great Sale of Ladies' Skirts. Friday, a great corset offering, and Saturday, Boy's Clothing. Read the details below.

Crowd Puller No. 1.

—MONDAY ONLY—

The subject for Monday's sale is one that will win great favor with those who need towels. The offering consists of fifty dozen extra heavy Turkish towels—extra size, 60 inches long and 27 inches wide. If we were to buy them again they would cost us considerable more than our sale price. They're regular 35c towels and are fully worth 19c each the regular price. Monday only



Crowd Puller No. 2.

...TUESDAY ONLY...
JAPANESE CREPE
 19c Yard.

This fabric will be very popular this spring and summer for waists and dresses—in fact, we're selling ever so much of it every day. It comes in the pretty stripe styles in Pinks, Blues, Tans Grays, Reds and White grounds with dark stripes; also in plain Pink, plain Tan and light Blue.

We have only 25 pieces of this fabric and are satisfied that every yard will be sold at Tuesday's sale. The regular price is 25c yard.

Crowd Puller No. 3

WEDNESDAY ONLY

Any Ladies Tailor Suit in the store for half price. There will be no reserve—every suit will be included. We might say that the suits are made by America's foremost makers in the best possible manner. Don't miss this sale.

Crowd Puller No. 4

Thursday Only.

We offer our entire stock of ladies' dress and side-walk skirts at wonderfully low prices for Thursday's sale. See Thursday's paper for prices.

Crowd Puller No. 5

...FRIDAY ONLY...

\$1.25 CORSETS 98c EACH

Any style—any color—any size. Warner's celebrated Corsets are the best that can be produced. This is one of the best attractions of the week.

\$1.25 Corsets, 98c Each

Crowd Puller No. 6

...SATURDAY ONLY...

Great sale of Boy's and Youth's Clothing

Prices will be like this:

\$3.00 suits	for \$2.40
\$3.50 " "	\$2.80
\$4.00 " "	\$3.20
\$5.00 " "	\$3.95
\$6.00 " "	\$4.80
\$7.00 " "	\$5.60

Standard Patterns for April now ready.

Dalrymple's

THE QUALITY STORE

New Netsuke and Wrist Bags Just in.