

# ANNOUNCEMENT

We have made extensive preparations for this Fall in the way of

## Men's, Boy's, Children's Clothing.

and as a result of our efforts we place before our patrons a line of Fall Suits that have the earmarks of the most skillful high art Tailoring and gives them the EASY GRACEFUL FIT so much sought after and seldom found in ready-to-wear clothing.

Mens Suits \$5. to \$20. Boys Suits \$3.50 to \$15.00. Children's Suits \$1.50 to \$7.50.

We also make suits to order from \$10. to \$45.00.

# G. W. JOHNSON & COMPANY

257 Commercial St., Salem, Or.

## THE DAILY JOURNAL

BY HOFER BROTHERS

SATURDAY, SEPT. 16, 1899.

Daily, One Year \$3.00, in Advance  
Daily, Four Months \$1.00, in Advance  
Weekly, One Year \$1.00, in Advance

### JOURNAL X RAY'S.

Best the trust by not patronizing it.

What if Charley Bishop should become governor of Oregon on a business issue?

Some people think that Binger Hermann can sponge more free advertising than George McFriede.

What a hero, genius, statesman and patriot Col. Bryan would be if he would only believe in the gold standard!

The Salem Sentinel wears no collar, yet it can get a pretty hot in that particular portion of its political anatomy.

Yamhill county is securing settlers from the east on account of its good roads. Ain't that a mean advantage to take of the rest of the state?

It's a shame for a rich Portland Republican state official to borrow \$1000 of a hard working baker at Salem. But then, he's a "sound money" man and must be good for it!

There are more and more who think a citizens' movement like that headed by Mayor Bishop in Salem, would be a healthy proposition for Marion county or even the state at large.

"Fresidio" is a very pretty word but altogether too Spanish for our American idea of the eternal fitness of things. "Garrison" is the English of it, and the word that should be used where Old Glory predominates.

The sultan of Sulu it seems is greatly under the influence of his mother. If his twelve wives also have influence, petticoat government is evidently what Uncle Sam has to reckon with in that quarter.—St. Paul Pioneer Press.

This country is not seeking any territory in Central or South America. The United States is the protector and not the enemy of the countries to the south of it.—Statesman.

Is the United States an "enemy" of the countries to the West?

After fighting our fair to the bitter end, Portland now has the gall to ask Salem people to help make and attend their so-called exposition. It is only a display of stuff that Portland people have to sell, and they want folks to pay for looking at their samples, that's all.

## CHICAGO LETTER.

Homes with four cubs about as big as sucking pigs ready to wean. The stately mother keeps her little princes of beasts scrupulously clean, to the great edification of the children outside of the bars at least. We saw something we did not like. A Great Dane dog was kept in a filthy pen as though the poor domestic

# GOLD DUST

The Best

## Washing Powder.

Cleans Everything from Cellar to Garret.

## Feed the Fire.

The food we eat is fuel. If the stomach works properly it is transformed into health and strength. If it does not, then come indigestion, constipation, dyspepsia, biliousness, lazy liver and kidneys, and Hostetter's Stomach Bitters is needed. It will build up women as well as men. See that a **PURINA** REVENUE STRAIP covers the neck of the bottle.

## Hostetter's Stomach Bitters

Do Not Stop Any Substitute

boys in transfer tickets. A boy will give you a penny newspaper that cost him half a cent for a transfer ticket, if you don't want to use it. He will sell it with another paper to some waiting passenger for a nickel. Net profit 4 cents to the boy. The passenger is a paper ahead. The corporation is a ride out of pocket. Other boys pay 25 cents for a lot of transfers and sell them to a family party for 3 cents a piece. This is carried on openly before the street car conductors and the public and seems to be winked at all around. A young lawyer who rides from the suburbs into the city—a 20 cent distance on the Rock Island suburban trains—told me he never bought more than a ticket to the next station, and rode clear through.

Next? FIRST SCIENCE CHURCH, Drexel and Fortieth streets, is from an architectural standpoint, exterior and interior the most beautiful church in the city. It was built for cash, cost with the lot \$100,000, faces squarely on the street, with a front something like the Greek Parthenon, spireless and towerless. Interior and exterior is finished in marble with a broad vestibule running back on a level with the street entrance. Off from this are parcel rooms, bicycle rooms, retiring rooms to hang clothing, lavatories, committee rooms, parlors, a library, an art room and cozy conference rooms.

This church, seating 3000, and two other large Christian Science churches are run right through the year except August, when they are closed to be cleaned and renovated. In spite of the absence of many from the city, First church was full the Sunday we attended. All seats were taken and some stood, and what for? To hear read the same service that is read at Salem and five hundred other places—the same morning service being read at the evening service. It will seem unaccountable to many.

The audience was one of the most surprising character, about the same number of men as women, but all above average intelligence, prosperous, well dressed and happy people. The first reader, dressed in plain black business suit, is a cashier in a large bank and does not abandon his weekly work to perform the service. The second reader is the wife of Judge Ewing of the Superior court, who has left the bench to lecture on Christian science. The leader of the singing is a society woman who has repeatedly taken leading oratorio roles. She sang beautifully and none the less sweetly because she wore a plain blue print dress trimmed with a little baby lace. The ushers of this church are leading bankers and board of trade men.

The one man under whose wise counsels these mighty organizations have been built up in the central west is Edward A. Kimball, C. S. D. Now the head of the national lecture board, and a gentleman of great culture and ability the affairs of this world go. At the Wednesday evening meeting there was the same enormous attendance and Dr. Kimball gave his own personal testimony. For seven years he hesitated and struggled between material and divine science. It was not until he was virtually cured of complete loss of sight by one treatment of a scientist, he walked home in broad daylight without his glasses that his eyes were opened.

E. HOFER.

Continued on Fourth page.

Every woman should know that there is a great home remedy for every ailment that tells all about the reproductive physiology of women, and all about the home-treatment of diseases peculiar to the sex. This book contains 200 pages and over 700 illustrations. It is called Dr. Pierce's Common Sense Medical Advice. It is a book that contains the names, addresses, photographs and experiences of hundreds of women who were once hopelessly ill, but who have been restored to robust womanly health by the use of Dr. Pierce's Favorite Prescription. This marvellous medicine acts directly on the delicate organs distinctly feminine. It makes them strong, healthy, vigorous, virile and elastic. It fits for wifehood and motherhood. It banishes the usual suffering of the expectant months, and makes baby's advent easy and almost painless. It robs motherhood of its perils. It insures the robust health of the little new comer and a beautiful supply of nature's nourishment. It transforms weak, sickly, nervous invalids into healthy, happy wives and mothers. For a paper-covered copy of Dr. Pierce's Common Sense Medical Advice, send a one-cent stamp, or cover out of mailing only to World's Dispensary Medical Association, Buffalo, N. Y. For elegant French cloth binding, it stamps.

Miss Ruth Cain, of Clinton, Allegheny Co., Pa., writes: "After two years of suffering I began taking Dr. Pierce's Favorite Prescription and am now entirely cured. I had been troubled with female weakness for some years, and also with a troublesome drain on the system, but now I am happy and well."

In cases of constipation and torpid liver, no remedy is equal to Dr. Pierce's Pleasant Pellets. They regulate and invigorate the stomach, liver and bowels. They never fail. One little "Pellet" is a gentle laxative and two a mild cathartic. They never gripe. An honest dealer will not urge a substitute upon you.

## Scrofula, a Vile Inheritance.

Scrofula is the most obstinate of blood troubles, and is often the result of an inherited taint in the blood. S. S. S. is the only remedy which goes deep enough to reach Scrofula; it forces out every trace of the disease, and cures the worst cases.

My son, Charlie, was afflicted from infancy with Scrofula, and he suffered so that it was impossible to dress him for three years. His head and body were a mass of sores, and his weight also became affected. No treatment was spared that we thought would do him good, but he grew worse until his condition was almost pitiable. I had almost despaired of his ever being cured, when by the advice of a friend I gave him S. S. S. After five bottles, a decided improvement was the result, and after twelve bottles, he was able to walk. All the sores on his body were healed, his skin is perfectly clear and smooth, and he has been restored to perfect health.

For real blood troubles it is a waste of time to expect a cure from the doctors. Blood diseases are beyond their skill. Swift's Specific.

## S.S.S. For the Blood

reaches all deep-seated cases which other remedies have no effect upon. It is the only blood remedy guaranteed purely vegetable, and contains no potash, mercury, or other mineral.

Books mailed free to any address by Swift Specific Co., Atlanta, Ga.

Wasco county's "short" wheat crop is proving so "long" that the farmers have discovered that there was not enough machinery in the county to harvest it, and two new steam threshers were taken into the Eight-Mile country to begin work there.

DeWitt's Little Early Risers promote health by keeping it properly regulated. "Best pills made; we will use no others." G. H. Applegate, J. P. of Clarksburg, N. J. Swines Drug Store.

Reduced Rates to Chicago, beginning Tuesday, September 12. If you are going east on the Northern Pacific agents, Thomas, Watt & Co., 227 Commercial street, remember that you save money by buying your ticket at Salem instead of going to Portland to buy.

To Cure LaGrippe in Two Days Take Laxative Bromo Quinine Tablets. All druggists refund the money if it fails to cure. E. W. Groves' signature is on each box.

To the Producers.

We are now receiving grain of all classes at our ware houses at Salem and Macleay, both buying and storing. Also at other points where convenient to load on cars or boats. We are associated with the leading exporters on the Pacific coast for export wheat. This alone guarantees a market for that class of wheat, besides we are in daily communication with the leading commission merchants in Portland and San Francisco which enables us to make a market for all of grades of grain. We therefore solicit your patronage and ask you to bring us in samples so we may act intelligently.

Office 200 Commercial street, Salem, up stairs over Central Telephone office, and when in the city be sure and call on us, and we especially invite you to call at our ware houses and satisfy yourselves as to our mode of business.

A. M. HUMPHREY & Co., 14-3 d & w Salem, Oregon.



## The Question Arises

As to whether it isn't better to pay a little more and get satisfactory optical goods. We sell the finest quality of glasses, spectacles etc. and guarantee them satisfactory. There is great danger in wearing near sighted glasses unless properly fitted. We have a new method and invite all people wearing such glasses to call in and find out if they are right.

## BARR'S JEWELRY STORE

118 STATE STREET

Notice is hereby given that I have taken up and impounded the following described animal found running at large within the City of Salem, to-wit:

White mare, 10 or 12 years old shod all around weighs about 900.

The owner of said animal can have the same by proving property and paying the legal charges and expenses of taking up and keeping, etc., and in default thereof for five days, I will proceed to sell the said animal at public sale on as provided in ordinance No. 30 of the city of Salem.

Dated Salem, September 13, 1899.

D. W. GIBSON, City Marshal.

## CASTORIA

For Infants and Children.

The Kind You Have Always Bought

Bears the Signature of J. C. Watson

Exhaustion and lack down follows Grip. Avoid it by using Dr. Miles' Nervine.

## GOLD DUST FLOUR

### SIDNEY MILLS

Telephone 51.

Enquire of your grocer for it and try it. Every sack guaranteed. All from old wheat and best in market.

### SIDNEY MILLS

Telephone 51.

## GOLD DUST FLOUR

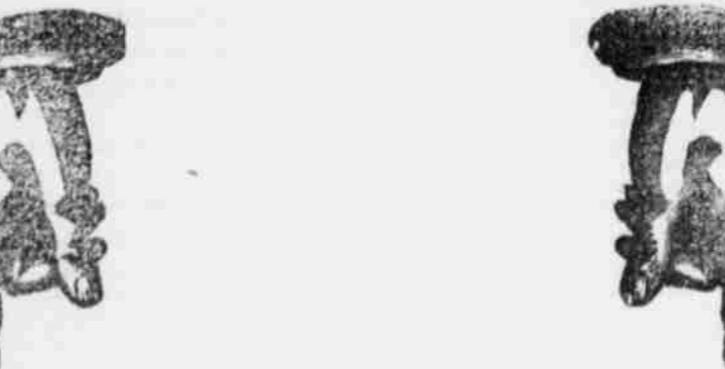
## GRASS SEEDS

All fresh seeds. No old stock left over. Get our prices. Lowest in the city.

## Brewster & White.

THE FLOUR AND FEED MEN

Phone 1781. 91 Court St.



\$1.00 BEST OREGON WEEKLY \$1.00

is issued Thursday morning in time to reach all parts of the state the same week.

## The \$1.00 Weekly...

## SALEM WEEKLY JOURNAL

In two parts contains all important Foreign, National and State News.

## SALEM WEEKLY JOURNAL

The Model Oregon Newspaper and Family Journal. Uniting News, Fiction, Literary, Ranch, and Dairy and Market News in attractive readable form.

## DAILY JOURNAL --- 300 A YEAR

FREE

## YOKOHAMA TEA STORE.

Telephone 2691. Free Delivery.

## THE GREAT SALT LAKE ROUTE

The attention of east-bound travelers is called to the advantages offered them by the Rio Grande Western, "The Great Salt Lake Route." The same rates prevailed when the trip is made via Huntington or as previously. The passenger has his choice of two routes out of Portland, three through Columbia, and four east thereof. No other line out of Portland can offer such a variety of routes. In addition, a day's stopover is given all passengers at any point in Utah or Colorado. Through Pullman and tourist sleeping cars are run on all trains, as well as free reclining chair cars. The service and accommodations offered are equal, if not superior to those of any transcontinental road, and rates are always as low as the lowest.

If you contemplate a trip east, write to J. D. Mansfield, General Agent, Rio Grande Western Railway, 122 1/2 West Street, Portland, Oregon, for any information you may need in reference to rates, routes or accommodations.

THE JOURNAL has the fullest report of the doings of the legislature and state officials, as well as independent, clear and concise comment on all public matters. Send a trial subscription.

HOFER BROS.

## Corvallis & Eastern Railroad TIME CARD.

DEPART FOR	TIME SCHEDULE	ARRIVE AT
Train leaves Albany	12:50 p. m.	
Train leaves Corvallis	1:45 p. m.	
Train arrives Yaquina	5:50 p. m.	
Returning:		
Leaves Yaquina	7:00 a. m.	
Leaves Corvallis	11:40 a. m.	
Arrives Albany	12:25 p. m.	
For Detroit:		
Leaves Albany	7:40 a. m.	
Arrives Detroit	11:55 a. m.	
Returning:		
Leaves Detroit	12:25 p. m.	
Arrives Albany	5:25 p. m.	
*Leaves Albany	6:50 p. m.	
Arrives Corvallis	6:55 p. m.	
*Leaves Corvallis	6:40 a. m.	
Arrives Albany	7:25 a. m.	
One and two connect at Albany and Corvallis with Southern Pacific trains, giving direct service to and from Newport and adjacent beaches.		
*No. 6 runs from Albany to Corvallis on Mondays, Wednesdays and Fridays only.		
*No. 5 runs from Corvallis to Albany on Tuesdays, Thursdays and Saturdays only.		
Trains for the mountains arrive at Detroit at noon, giving ample time to reach camping grounds on the Bretton and Santiam river the same day.		
H. L. WALDEN, T. F. & P. A. Manager	EDWIN STONE, J. TURNER Agent	Albany, Ore.

WILLAMETTE RIVER DIVISION—Daily boats to Portland as above. Transfers to street car line at Oregon Street. If the steamer are delayed, special trip tickets to all points in Oregon, Washington, or California, a connection made in Portland with all rail, ocean and river lines.

WILLAMETTE RIVER DIVISION—Daily boats to Portland as above. Transfers to street car line at Oregon Street. If the steamer are delayed, special trip tickets to all points in Oregon, Washington, or California, a connection made in Portland with all rail, ocean and river lines.

WILLAMETTE RIVER DIVISION—Daily boats to Portland as above. Transfers to street car line at Oregon Street. If the steamer are delayed, special trip tickets to all points in Oregon, Washington, or California, a connection made in Portland with all rail, ocean and river lines.

WILLAMETTE RIVER DIVISION—Daily boats to Portland as above. Transfers to street car line at Oregon Street. If the steamer are delayed, special trip tickets to all points in Oregon, Washington, or California, a connection made in Portland with all rail, ocean and river lines.

WILLAMETTE RIVER DIVISION—Daily boats to Portland as above. Transfers to street car line at Oregon Street. If the steamer are delayed, special trip tickets to all points in Oregon, Washington, or California, a connection made in Portland with all rail, ocean and river lines.

WILLAMETTE RIVER DIVISION—Daily boats to Portland as above. Transfers to street car line at Oregon Street. If the steamer are delayed, special trip tickets to all points in Oregon, Washington, or California, a connection made in Portland with all rail, ocean and river lines.

WILLAMETTE RIVER DIVISION—Daily boats to Portland as above. Transfers to street car line at Oregon Street. If the steamer are delayed, special trip tickets to all points in Oregon, Washington, or California, a connection made in Portland with all rail, ocean and river lines.

WILLAMETTE RIVER DIVISION—Daily boats to Portland as above. Transfers to street car line at Oregon Street. If the steamer are delayed, special trip tickets to all points in Oregon, Washington, or California, a connection made in Portland with all rail, ocean and river lines.

WILLAMETTE RIVER DIVISION—Daily boats to Portland as above. Transfers to street car line at Oregon Street. If the steamer are delayed, special trip tickets to all points in Oregon, Washington, or California, a connection made in Portland with all rail, ocean and river lines.

WILLAMETTE RIVER DIVISION—Daily boats to Portland as above. Transfers to street car line at Oregon Street. If the steamer are delayed, special trip tickets to all points in Oregon, Washington, or California, a connection made in Portland with all rail, ocean and river lines.

WILLAMETTE RIVER DIVISION—Daily boats to Portland as above. Transfers to street car line at Oregon Street. If the steamer are delayed, special trip tickets to all points in Oregon, Washington, or California, a connection made in Portland with all rail, ocean and river lines.

WILLAMETTE RIVER DIVISION—Daily boats to Portland as above. Transfers to street car line at Oregon Street. If the steamer are delayed, special trip tickets to all points in Oregon, Washington, or California, a connection made in Portland with all rail, ocean and river lines.

WILLAMETTE RIVER DIVISION—Daily boats to Portland as above. Transfers to street car line at Oregon Street. If the steamer are delayed, special trip tickets to all points in Oregon, Washington, or California, a connection made in Portland with all rail, ocean and river lines.

WILLAMETTE RIVER DIVISION—Daily boats to Portland as above. Transfers to street car line at Oregon Street. If the steamer are delayed, special trip tickets to all points in Oregon, Washington, or California, a connection made in Portland with all rail, ocean and river lines.

WILLAMETTE RIVER DIVISION—Daily boats to Portland as above. Transfers to street car line at Oregon Street. If the steamer are delayed, special trip tickets to all points in Oregon, Washington, or California, a connection made in Portland with all rail, ocean and river lines.

WILLAMETTE RIVER DIVISION—Daily boats to Portland as above. Transfers to street car line at Oregon Street. If the steamer are delayed, special trip tickets to all points in Oregon, Washington, or California, a connection made in Portland with all rail, ocean and river lines.

WILLAMETTE RIVER DIVISION—Daily boats to Portland as above. Transfers to street car line at Oregon Street. If the steamer are delayed, special trip tickets to all points in Oregon, Washington, or California, a connection made in Portland with all rail, ocean and river lines.

WILLAMETTE RIVER DIVISION—Daily boats to Portland as above. Transfers to street car line at Oregon Street. If the steamer are delayed, special trip tickets to all points in Oregon, Washington, or California, a connection made in Portland with all rail, ocean and river lines.

WILLAMETTE RIVER DIVISION—Daily boats to Portland as above. Transfers to street car line at Oregon Street. If the steamer are delayed, special trip tickets to all points in Oregon, Washington, or California, a connection made in Portland with all rail, ocean and river lines.

WILLAMETTE RIVER DIVISION—Daily boats to Portland as above. Transfers to street car line at Oregon Street. If the steamer are delayed, special trip tickets to all points in Oregon, Washington, or California, a connection made in Portland with all rail, ocean and river lines.

WILLAMETTE RIVER DIVISION—Daily boats to Portland as above. Transfers to street car line at Oregon Street. If the steamer are delayed, special trip tickets to all points in Oregon, Washington, or California, a connection made in Portland with all rail, ocean and river lines.

WILLAMETTE RIVER DIVISION—Daily boats to Portland as above. Transfers to street car line at Oregon Street. If the steamer are delayed, special trip tickets to all points in Oregon, Washington, or California, a connection made in Portland with all rail, ocean and river lines.

WILLAMETTE RIVER DIVISION—Daily boats to Portland as above. Transfers to street car line at Oregon Street. If the steamer are delayed, special trip tickets to all points in Oregon, Washington, or California, a connection made in Portland with all rail, ocean and river lines.

WILLAMETTE RIVER DIVISION—Daily boats to Portland as above. Transfers to street car line at Oregon Street. If the steamer are delayed, special trip tickets to all points in Oregon, Washington, or California, a connection made in Portland with all rail, ocean and river lines.

WILLAMETTE RIVER DIVISION—Daily boats to Portland as above. Transfers to street car line at Oregon Street. If the steamer are delayed, special trip tickets to all points in Oregon, Washington, or California, a connection made in Portland with all rail, ocean and river lines.

WILLAMETTE RIVER DIVISION—Daily boats to Portland as above. Transfers to street car line at Oregon Street. If the steamer are delayed, special trip tickets to all points in Oregon, Washington, or California, a connection made in Portland with all rail, ocean and river lines.

WILLAMETTE RIVER DIVISION—Daily boats to Portland as above. Transfers to street car line at Oregon Street. If the steamer are delayed, special trip tickets to all points in Oregon, Washington, or California, a connection made in Portland with all rail, ocean and river lines.

WILLAMETTE RIVER DIVISION—Daily boats to Portland as above. Transfers to street car line at Oregon Street. If the steamer are delayed, special trip tickets to all points in Oregon, Washington, or California, a connection made in Portland with all rail, ocean and river lines.

WILLAMETTE RIVER DIVISION—Daily boats to Portland as above. Transfers to street car line at Oregon Street. If the steamer are delayed, special trip tickets to all points in Oregon, Washington, or California, a connection made in Portland with all rail, ocean and river lines.

WILLAMETTE RIVER DIVISION—Daily boats to Portland as above. Transfers to street car line at Oregon Street. If the steamer are delayed, special trip tickets to all points in Oregon, Washington, or California, a connection made in Portland with all rail, ocean and river lines.

WILLAMETTE RIVER DIVISION—Daily boats to Portland as above. Transfers to street car line at Oregon Street. If the steamer are delayed, special trip tickets to all points in Oregon, Washington, or California, a connection made in Portland with all rail, ocean and river lines.

WILLAMETTE RIVER DIVISION—Daily boats to Portland as above. Transfers to street car line at Oregon Street. If the steamer are delayed, special trip tickets to all points in Oregon, Washington, or California, a connection made in Portland with all rail, ocean and river lines.

WILLAMETTE RIVER DIVISION—Daily boats to Portland as above. Transfers to street car line at Oregon Street. If the steamer are delayed, special trip tickets to all points in Oregon, Washington, or California, a connection made in Portland with all rail, ocean and river lines.

WILLAMETTE RIVER DIVISION—Daily boats to Portland as above. Transfers to street car line at Oregon Street. If the steamer are delayed, special trip tickets to all points in Oregon, Washington, or California, a connection made in Portland with all rail, ocean and river lines.

WILLAMETTE RIVER DIVISION—Daily boats to Portland as above. Transfers to street car line at Oregon Street. If the steamer are delayed, special trip tickets to all points in Oregon, Washington, or California, a connection made in Portland with all rail, ocean and river lines.

WILLAMETTE RIVER DIVISION—Daily boats to Portland as above. Transfers to street car line at Oregon Street. If the steamer are delayed, special trip tickets to all points in Oregon, Washington, or California, a connection made in Portland with all rail, ocean and river lines.

WILLAMETTE RIVER DIVISION—Daily boats to Portland as above. Transfers to street car line at Oregon Street. If the steamer are delayed, special trip tickets to all points in Oregon, Washington, or California, a connection made in Portland with all rail, ocean and river lines.

WILLAMETTE RIVER DIVISION—Daily boats to Portland as above. Transfers to street car line at Oregon Street. If the steamer are delayed, special trip tickets to all points in Oregon, Washington, or California, a connection made in Portland with all rail, ocean and river lines.

WILLAMETTE RIVER DIVISION—Daily boats to Portland as above. Transfers to street car line at Oregon Street. If the steamer are delayed, special trip tickets to all points in Oregon, Washington, or California, a connection made in Portland with all rail, ocean and river lines.

WILLAMETTE RIVER DIVISION—Daily boats to Portland as above. Transfers to street car line at Oregon Street. If the steamer are delayed, special trip tickets to all points in Oregon, Washington, or California, a connection made in Portland with all rail, ocean and river lines.

WILLAMETTE RIVER DIVISION—Daily boats to Portland as above. Transfers to street car line at Oregon Street. If the steamer are delayed, special trip tickets to all points in Oregon, Washington, or California, a connection made in Portland with all rail, ocean and river lines.

WILLAMETTE RIVER DIVISION—Daily boats to Portland as above. Transfers to street car line at Oregon Street. If the steamer are delayed, special trip tickets to all points in Oregon, Washington, or California, a connection made in Portland with all rail, ocean and river lines.

WILLAMETTE RIVER DIVISION—Daily boats to Portland as above. Transfers to street car line at Oregon Street. If the steamer are delayed, special trip tickets to all points in Oregon, Washington, or California, a connection made in Portland with all rail, ocean and river lines.

WILLAMETTE RIVER DIVISION—Daily boats to Portland as above. Transfers to street car line at Oregon Street. If the steamer are delayed, special trip tickets to all points in Oregon, Washington, or California, a connection made in Portland with all rail, ocean and river lines.

WILLAMETTE RIVER DIVISION—Daily boats to Portland as above. Transfers to street car line at Oregon Street. If the steamer are delayed, special trip tickets to all points in Oregon, Washington, or California, a connection made in Portland with all rail, ocean and river lines.

WILLAMETTE RIVER DIVISION—Daily boats to Portland as above. Transfers to street car line at Oregon Street. If the steamer are delayed, special trip tickets to all points in Oregon, Washington, or California, a connection made in Portland with all rail, ocean and river lines.

WILLAMETTE RIVER DIVISION—Daily boats to Portland as above. Transfers to street car line at Oregon Street. If the steamer are delayed, special trip tickets to all points in Oregon, Washington, or California, a connection made in Portland with all rail, ocean and river lines.

WILLAMETTE RIVER DIVISION—Daily boats to Portland as above. Transfers to street car line at Oregon Street. If the steamer are delayed, special trip tickets to all points in Oregon, Washington, or California, a connection made in Portland with all rail, ocean and river lines.

WILLAMETTE RIVER DIVISION—Daily boats to Portland as above. Transfers to street car line at Oregon Street. If the steamer are delayed, special trip tickets to all points in Oregon, Washington, or California, a connection made in Portland with all rail, ocean and river lines.

WILLAMETTE RIVER DIVISION—Daily boats to Portland as above. Transfers to street car line at Oregon Street. If the steamer are delayed, special trip tickets to all points in Oregon, Washington, or California, a connection made in Portland with all rail, ocean and river lines.