

Improve your temper in hot weather by eating fruit and vegetables. Meats should be boiled or broiled.

Chances are that the Klondike widows will do as well on an average at home as the widowers seeking their fortunes 2,500 miles away.

Take of the checkbooks and blunders if you want your horse to travel easy and work well this hot weather. Don't shut him up over Sunday in a dark, hot stable.

Miss Susie W. Myers, of the junior class at Bernard college, is credited with the editorship of "The Mortarboard," said to be "The Bookman" to be the brightest of American college publications. So much for woman's progress.

The post office is loved in America as nowhere else, not even in its native continent. This recalls a remark once made by a class of Burns to some visitors from abroad: "A Scotchman always begins by finding fault with my uncle; but the Americans they never find fault with him."

Very pretty outings can be given the children, if you can't go to the mountains or the seaside, by taking them to the nearest brook for a day. Have a basket dinner, take some soft quilts and a mosquito bar, as a sleep in the shade after wading in the brook is a delicious refreshment.

It is easy to find fault, it is not easy to be just. But the truth is Oregon has a more efficient and independent governor and secretary of state than states like Iowa and Illinois. In Iowa the secretary of state is under prosecution for stealing public funds, as disclosed by a legislative committee of his own party. In Illinois Governor Tanner was impeached and hounded at from beginning to end of the Logan monument parade, to the scandal of decency and dignity.

The fact is discovered by a Washington county fruit grower that the common yellow-jacket or hornet is very destructive to the various kinds of aphids that infest fruit trees. It is high time that people learned that it is dangerous to destroy the nests of hornets and yellow-jackets, as they are a valuable part of the economy of nature. The destruction of garter-snakes, toads, frogs, owls and skunks is also an interference with nature's cheapest insect destroyers, and children in school ought to be taught the common facts of natural history about these useful assistants to agriculture. It is believed that the absence of mosquitoes in Oregon is due to the fact that frogs here do not hibernate but are active all winter and devour the larvae of the mosquito before it can hatch. The teaching of the common facts of natural science is a step that should be taken in public schools at an early day.

Marion county has a clerk who believes public records belong to the public and he gives them to the newspapers.

The Oregonians would be nearer the truth if it stated that Harrison R. Kintzoid is not seeking any nomination, other than at the hands of the Republican party which made him its candidate for secretary of state in 1894 and ought to do so again in 1898. All talk about D. P. Thompson and Kintzoid running on an independent ticket is an invention to lure those gentlemen.

While there is talk of introducing the study of English literature in our higher public schools, and while we blush that our colleges and summer schools are so lame in their devotion to the study of the history of English letters, we are hopeful that our western world may have a growing love of e culture when we see here and there taken a copy of "The Bookman," published by Dodd, Mead & Co., New York. The August number has articles on Richard Harding Davis, Edward Bellamy, Mrs. Oliphant, Du

Maurier, Jules Lemaitre, Justin McCarty, Dr. Jowett. Some of these are in editorials, some signed and some unsigned. The news features of the "Bookman," including its London, Parisian, eastern and western letters give it the special flavor of the age—the tang of journalism in the better sense. No one publication of a monthly character more completely covers its chosen field.

The opening of the Ogden gateway for railroad traffic has doubted and quadrupled the through freight and passenger business of the Southern Pacific railway, and has resulted in the Denver and Rio Grande opening an office at Portland.

Gen. Pass. Agent Markham, of the S. P. Co. shows the right spirit in giving the Oregon state fair special excursion rates of one fare for the round trip. This will add largely to the attendance at the fair and increase the good-will of the people of this state toward the S. P. Co. These favors to the state fair are in the direction of building up the interests of this state. Oregon has generously poured out her people to other states and it is time we looked out for ourselves.

What a burrah because silver is going down! What a disgrace to cry down a great American product!

THE JOURNAL will continue to tell the truth about county and state affairs at the old price of 1 cent a day.

Trust stocks have advanced 200 millions under the new tariff. Well, we are glad somebody is getting a benefit, if not exactly the producer and down-trodden laborer.

The way to bust a county office-holder's trust, if we have such things, is not to vote with it.

The Piper Brothers are reported to be in control of the Seattle P. L. They are Lind county men, native Oregonians and natural born newspapermen. Ted Piper was for many years city editor of the Oregonian, and under the signature of "Boulder," he contributed the racy and humorous sketches of public situations. Oregon politicians and peculiar characters. He is a man of free mind and broader culture than ordinarily gets a foothold on a metropolitan daily. Mr. Piper is a trained newspaper man with a fund of general knowledge and political sagacity that is simply invaluable on such a paper.

We are to have better times; there is no doubt about it; but don't neglect to house the potatoes.

If Lincoln and Clackamas have had enough of Populist administrations, as a Republican organ says, have the people of Marion had enough of Republican administrations. It is a poor rule that won't work both ways.

The treasury officials say we have 77,000,000 people and \$22.53 per capita money holdings. "The report does not say who holds the money, but most of it is locked up "out of sight."

Judge H. H. Northrup of Multnomah county, seems to have a firm hold on the reins of county government. He seems to know just exactly how much money there is in the county treasury at a given time. On Saturday July 31, he says there was a balance of \$83,500.45 in the county treasury, and then he tells what purposes it can be used for. He says he shall endeavor to follow the law in every particular. He seems to be doing it. Judge Northrup seems to belong to a faction called by the old-fashioned name of the common people and he seems to regard public office as a public trust to be administered in the interest of the people, rather than any set of politicians or boodlers whatsoever. Northrup would make a good state treasurer.

The Oregon state government labors under the difficulty of trying to do a great deal that is not provided for in the constitution that was made nearly 40 years ago. At that time no railroad commission was dreamed of. No supreme court as at present constituted was thought of. No session of the court in Eastern Oregon was necessary. Recently the supreme court crumpled 38 cases out of their

FOR THIRTY YEARS Complete Frustration at Times, Followed by Permanent Relief. WALLA WALLA, WASH.—"Formerly thirty years I have been afflicted with sick headache which completely prostrated me at times, and the doctors could give me only temporary relief. I was induced to try Hood's Sarsaparilla and since taking three bottles I have been almost entirely free from those headaches. Hood's Sarsaparilla has also benefited me in other ways." H. A. BURR.

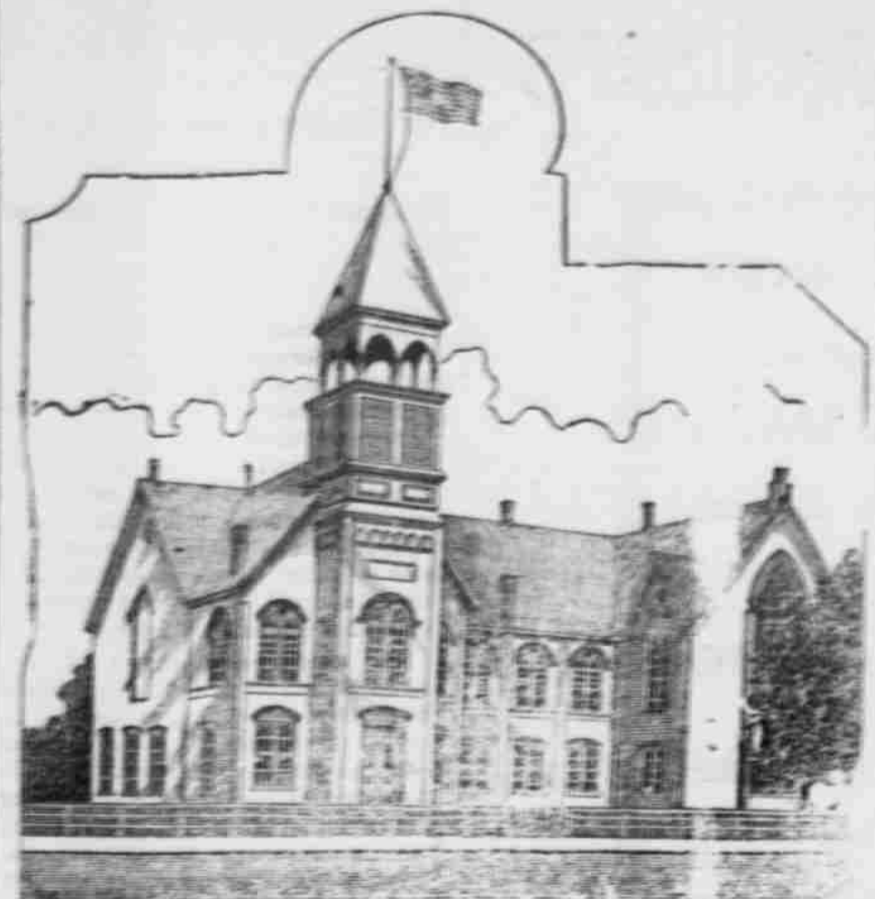
regular order, wrote an opinion in each case, gave the opinions to the press at Salem and solemnly travelled in person to Pendleton to "render" their "opinions." This is all very funny. Ordinarily a case is not taken out of its order unless there is urgent public necessity for it. But here 28 are taken up to accommodate a section of the state. This is done as is supposed to help out the remote part of the state. It is an effort of the court to meet a demand of the people. It is probably true that the Oregon court works very hard to meet the demands made upon it. The demand upon its time and services is far beyond the interest and capacity of the machinery provided by the constitution. The railroad commission is another case. It was never authorized by the constitution or ordered created by the people. It exists by virtue of a special legislative creation, and will probably exist and draw its pay until it is specifically and deliberately abolished by the legislature. If the people could speak by direct vote they would abolish it at the first opportunity. But of late years the evils people complain of and the abuses they want to get rid of have dodged behind the struggles growing out of electing United States senators, which have deadlocked the legislature and paralyzed their reformatory function. So at present their is a struggle to compel the secretary of state to audit and allow claims in the absence of appropriations, which that official is forbidden to do. While he is doing his duty in complying with the constitution, though the supreme court may reverse its former decision and order him to audit claims, so one imagines that the state will regulate any of its bills. The paralysis of a legislature is evidence that Oregon has outgrown her constitution.

All should be thankful at the end of tariff agitation, the end of uncertainty, the beginning of commercial activity only possible under accomplished security. We may rejoice at the close of the long period of unrest, but we need not close our eyes to the fact that the bill is the fruit of trust control of legislation, that sugar stock sold at 110 when the bill was begun and when it was finished the same stock was selling at 146, netting the trust \$13,000,000 value added to its monopoly. Harpers Weekly, a special supporter of McKinley's election says of the whole bill: "Whether or not we shall escape the direful economic and political consequences that would follow the triumph of the silver men next year, we firmly believe that this measure will hasten the end of the protective policy. We do not believe that the country will much longer tolerate a policy that is hostile to commerce, which was spreading under the lower tariff; hostile to manufacturers, many of whom have enjoyed the benefits of free raw material, now to be taxed; hostile to the consumer, hostile to art and letters; and such a fruitful breeder of corruption that whenever a tariff bill is up, the seacoast-house at Washington becomes a market. The end of all this must come, and the men who are responsible for this latest phase of the protection barbarism will go down before the just indignation of the country whose public opinion they have ignored or openly condemned."

Excursion Rates Every Day. The Southern Pacific now offers for sale round trip tickets from Salem to Newport, good until Oct. 1, for the price of \$4.50. Call on the Salem agent for same.

W. W. SKINNER. Feed Drops "Mucky." Bran and shorts are cheaper than corn. Price of mill feed greatly reduced. Call at the mill for quotations. Delivered, free 1/2 ton lots. SALEM FLOURING MILLS CO. 9-18-dtd.

OREGON State Normal School MONMOUTH, OREGON A TRAINING SCHOOL FOR TEACHERS



Regular normal course of three years. Senior year wholly professional. Training department of six grades, with 200 children. Instruction and training in gymnastics (Swedish system) and vocal music for public schools. The Normal diploma is recognized by law as a State Life Certificate to teach.

Light expense, tuition, books, board and lodging (approximately) \$100 per year; students boarding themselves, \$110 per year. Academic grades accepted from High Schools. Catalogues cheerfully sent on application. Address P. L. CAMPBELL, Pres Or W. A. WANN, Sec Faculty

MANHOOD RESTORED By using Dr. Fenn's Yellow Pills. This wonderful remedy guaranteed to cure all nervous diseases, such as Weak Memory, Loss of Brain Power, Headache, Waking at Night, Nightly Emotions, Nervousness, all kinds of loss of power in Genitive Organs of either sex, caused by over-exhaustion, youthful errors, excessive use of tobacco, opium or stimulants, which lead to Infertility, Consumption or Insanity. Can be carried in vest pocket. 25c per box, \$5.00 by mail prepaid. Circular Free. Sold by all druggists. Ask for Dr. Fenn's Manhood Restored, Manufactured by the Fenn Medicine Co., Paris, France. Wholesale Drug Co., distributing agents, Third and Yamhill Sts., Portland, Or.

UNION PARTY PLATFORM Adopted at Albany, Oregon, June 2, 1897. We demand the free and unlimited coinage of gold and silver at the ratio of 16 to 1 independent of the action of any other nation. That the government shall issue all money without the intervention of banks, and in quantity adequate to the needs of the people. That all money issued by the government, whether gold, silver or paper, shall be legal tender for all debts, public or private. That no contract or law shall discriminate against any kind of money issued by the government. We are opposed to the issue of United States paper money in time of peace. We demand the redemption of Oregon from rings, commissions and corrupt methods, and demand honest elections and election laws, including non-partisan registration laws. We demand that the people shall have the same power over all legislative enactments as the rest of the referendum. We demand the election of all officers by a direct vote of the people. We favor and advise that all nominations for municipal and county offices, including members of the legislature, shall be made by primary elections. We recommend that this party shall be known as the Union party, and invite all reform forces of the state to unite with us in realizing these principles by united efforts, and we pledge ourselves to unite with such reform forces in carrying out this bond of union.

Stage Line. From Salem to Willits Springs, via Silverton. Leaves Silverton for Salem at 6:30 a. m. Mondays, Wednesdays and Fridays, returning to Silverton same days, leaving Salem at 1 o'clock p. m. Leaves Silverton for Willits Springs at 4:30 a. m. Mondays Wednesdays and Fridays, returning to Silverton Tuesdays, Thursdays and Saturdays. Leaves Salem from Weacosta's barn. Fare—Round trip from Silverton to Salem \$1. Round trip from Salem to Willits \$2.50 Round trip from Silverton to Willits \$1.50 HARDESTY & MOODY.

OREGON CENTRAL AND Eastern R. R. Company [VAQUINA BAY ROUTE. Connecting at Yaquina Bay with the San Francisco & Yaquina Bay Steamship Co. STEAMER "FARALLON." Sails from Yaquina every 8 days for San Francisco, Coos Bay, Port Orford, Trinidad and Humboldt Bay. Passenger accommodations unsurpassed. Shortest route between the Willamette valley and California. Fare from Albany or points west to San Francisco: Cabin, \$9; steerage, \$5; to Coos Bay and Port Orford, cabin \$6; to Humboldt Bay, cabin \$8; round trip, good 60 days, \$16 if

Salem Steam Laundry Please notice the cut-in prices on the following: Shirts, plain, 10 cents; Under drawers, 5 to 10 cents; Socks, per pair, 3 cents; Handkerchiefs, 1 cent; Silk handkerchiefs, 3 cents; Sheets and pillow slips at cents per dozen, and other work in proportion. Flannels and other work intelligently washed by hand. Col. I. Olmsted Prop.

C. H. MACK DENTIST! Successor to Dr. J. McMillen, old White Corner, Salem, Or. Parties leaving expeditions on mountain trips in any branch not to neglect this report.

WOLZ'S MARKET W. L. & W. S. KE. Fruit Dealers in all kinds of fresh and salt water. Largest stock in the city. Cheapest market in the west. Try them, 127 Commercial St.

C. H. LANE, MERCHANT TAILOR 207 Commercial St., Salem Or. Suits from \$15 upwards. Pants \$4 upwards.

STENOGRAPHY AND TYPEWRITING. Legal and commercial work a specialty. Telephone one-four. Office with Sherman Condit & Park, Gray Block. Dictation taken at your office and work returned on short notice. STELLA SHERMAN, 430 1/2

J. H. HAAS, WATCHMAKER AND JEWELER. Makes a specialty of fine repair work. Sell Thomas clocks, etc., 215 Commercial Street DEPOT EXPRESS. Meets all mail and passenger trains. Baggage and express to all parts of the city. Prompt service. Telephone No. 70. JAMES KADNER.

Building Material! Salem Branch 108 of the Labor Exchange, we are prepared to furnish at short notice and of the best quality, and in any quantity. Telephone 75.

HELLO! SEE D. S. BENTLEY. If you want to move or want a lead of any kind (house or) want a lead of manure, dirt, sand or gravel, or cement, lime, hair plaster, brick or sewer pipe, see D. S. Bentley, corner of Front and Commercial streets or ring on telephone 30. Also wood and coal on hand at all times. Orders promptly attended to.

Steevens' FRUIT DRYER! PATENT PENDING. Dryers now in operation on our place near the asylum. Call and see them. Fruit growers are invited to investigate before buying or building a dryer. Our claims are: 1. Unlimited capacity. 2. Cheapest of construction. 3. Rapid production. 4. Easy cheapness and simplicity of process. Write me for scientific and accurate description of the dryer, the country furnishing the farm, house, bedding and clothing. The court reserves the right to reject any or all bids. Bids may be filed with the county clerk until Wednesday, September 8, 1897, at 4 p. m. L. V. EHLEN, County Clerk.

NOTICE FOR BIDS. Bids will be received by the commission-ers court of Marion county at the September term, 1897, for competent persons to board and take care of the poor of Marion county from November 1, 1897, during the pleasure of the court, the county furnishing the farm, house, bedding and clothing. The court reserves the right to reject any or all bids. Bids may be filed with the county clerk until Wednesday, September 8, 1897, at 3 p. m. L. V. EHLEN, County Clerk.

NOTICE. To the taxpayers of Marion county: Notice is hereby given that the county board of equalization for Marion county will convene in the assessor's office in the court house at 9 o'clock a. m. Monday, August 30, 1897, and will remain in session during six consecutive days, as required by law. All owners of property are hereby notified to appear at said time and place and show cause, if any there be, why the assessment of Marion county, as taken by the assessor, should not be accepted as correct. J. W. HOBART, Assessor for Marion county Oregon. \$ 7 1/2

NOTICE TO TAXPAYERS. Salem, Marion county, Oregon, July, 1897. The county court of Marion county has ordered the Tax Roll for Marion county Oregon for the year 1896, closed on September 1, 1897. All taxes will be delinquent after said date. All persons paying taxes before that date will save costs, as at that time all property upon which taxes have not been paid will be advertised and sold. F. T. WRIGHTMAN, Sheriff and tax collector, Marion county.

MADE ME A MAN AJAX TABLETS REMEDY CO. For sale at Salem, Or. by D. J. Fry

EAST AND SOUTH THE SHASTA ROUTE OF THE Southern Pacific Co

EXPRESS TRAINS RUN DAILY. 7:30 P. M. Le. Portland. Ar. Astoria 8:30 P. M. Le. Astoria. Ar. Portland 9:30 P. M. Le. Astoria. Ar. Portland 10:30 P. M. Le. Astoria. Ar. Portland 11:30 P. M. Le. Astoria. Ar. Portland 12:30 P. M. Le. Astoria. Ar. Portland 1:30 P. M. Le. Astoria. Ar. Portland 2:30 P. M. Le. Astoria. Ar. Portland 3:30 P. M. Le. Astoria. Ar. Portland 4:30 P. M. Le. Astoria. Ar. Portland 5:30 P. M. Le. Astoria. Ar. Portland 6:30 P. M. Le. Astoria. Ar. Portland 7:30 P. M. Le. Astoria. Ar. Portland 8:30 P. M. Le. Astoria. Ar. Portland 9:30 P. M. Le. Astoria. Ar. Portland 10:30 P. M. Le. Astoria. Ar. Portland 11:30 P. M. Le. Astoria. Ar. Portland 12:30 P. M. Le. Astoria. Ar. Portland 1:30 P. M. Le. Astoria. Ar. Portland 2:30 P. M. Le. Astoria. Ar. Portland 3:30 P. M. Le. Astoria. Ar. Portland 4:30 P. M. Le. Astoria. Ar. Portland 5:30 P. M. Le. Astoria. Ar. Portland 6:30 P. M. Le. Astoria. Ar. Portland 7:30 P. M. Le. Astoria. Ar. Portland 8:30 P. M. Le. Astoria. Ar. Portland 9:30 P. M. Le. Astoria. Ar. Portland 10:30 P. M. Le. Astoria. Ar. Portland 11:30 P. M. Le. Astoria. Ar. Portland 12:30 P. M. Le. Astoria. Ar. Portland 1:30 P. M. Le. Astoria. Ar. Portland 2:30 P. M. Le. Astoria. Ar. Portland 3:30 P. M. Le. Astoria. Ar. Portland 4:30 P. M. Le. Astoria. Ar. Portland 5:30 P. M. Le. Astoria. Ar. Portland 6:30 P. M. Le. Astoria. Ar. Portland 7:30 P. M. Le. Astoria. Ar. Portland 8:30 P. M. Le. Astoria. Ar. Portland 9:30 P. M. Le. Astoria. Ar. Portland 10:30 P. M. Le. Astoria. Ar. Portland 11:30 P. M. Le. Astoria. Ar. Portland 12:30 P. M. Le. Astoria. Ar. Portland 1:30 P. M. Le. Astoria. Ar. Portland 2:30 P. M. Le. Astoria. Ar. Portland 3:30 P. M. Le. Astoria. Ar. Portland 4:30 P. M. Le. Astoria. Ar. Portland 5:30 P. M. Le. Astoria. Ar. Portland 6:30 P. M. Le. Astoria. Ar. Portland 7:30 P. M. Le. Astoria. Ar. Portland 8:30 P. M. Le. Astoria. Ar. Portland 9:30 P. M. Le. Astoria. Ar. Portland 10:30 P. M. Le. Astoria. Ar. Portland 11:30 P. M. Le. Astoria. Ar. Portland 12:30 P. M. Le. Astoria. Ar. Portland 1:30 P. M. Le. Astoria. Ar. Portland 2:30 P. M. Le. Astoria. Ar. Portland 3:30 P. M. Le. Astoria. Ar. Portland 4:30 P. M. Le. Astoria. Ar. Portland 5:30 P. M. Le. Astoria. Ar. Portland 6:30 P. M. Le. Astoria. Ar. Portland 7:30 P. M. Le. Astoria. Ar. Portland 8:30 P. M. Le. Astoria. Ar. Portland 9:30 P. M. Le. Astoria. Ar. Portland 10:30 P. M. Le. Astoria. Ar. Portland 11:30 P. M. Le. Astoria. Ar. Portland 12:30 P. M. Le. Astoria. Ar. Portland 1:30 P. M. Le. Astoria. Ar. Portland 2:30 P. M. Le. Astoria. Ar. Portland 3:30 P. M. Le. Astoria. Ar. Portland 4:30 P. M. Le. Astoria. Ar. Portland 5:30 P. M. Le. Astoria. Ar. Portland 6:30 P. M. Le. Astoria. Ar. Portland 7:30 P. M. Le. Astoria. Ar. Portland 8:30 P. M. Le. Astoria. Ar. Portland 9:30 P. M. Le. Astoria. Ar. Portland 10:30 P. M. Le. Astoria. Ar. Portland 11:30 P. M. Le. Astoria. Ar. Portland 12:30 P. M. Le. Astoria. Ar. Portland 1:30 P. M. Le. Astoria. Ar. Portland 2:30 P. M. Le. Astoria. Ar. Portland 3:30 P. M. Le. Astoria. Ar. Portland 4:30 P. M. Le. Astoria. Ar. Portland 5:30 P. M. Le. Astoria. Ar. Portland 6:30 P. M. Le. Astoria. Ar. Portland 7:30 P. M. Le. Astoria. Ar. Portland 8:30 P. M. Le. Astoria. Ar. Portland 9:30 P. M. Le. Astoria. Ar. Portland 10:30 P. M. Le. Astoria. Ar. Portland 11:30 P. M. Le. Astoria. Ar. Portland 12:30 P. M. Le. Astoria. Ar. Portland 1:30 P. M. Le. Astoria. Ar. Portland 2:30 P. M. Le. Astoria. Ar. Portland 3:30 P. M. Le. Astoria. Ar. Portland 4:30 P. M. Le. Astoria. Ar. Portland 5:30 P. M. Le. Astoria. Ar. Portland 6:30 P. M. Le. Astoria. Ar. Portland 7:30 P. M. Le. Astoria. Ar. Portland 8:30 P. M. Le. Astoria. Ar. Portland 9:30 P. M. Le. Astoria. Ar. Portland 10:30 P. M. Le. Astoria. Ar. Portland 11:30 P. M. Le. Astoria. Ar. Portland 12:30 P. M. Le. Astoria. Ar. Portland 1:30 P. M. Le. Astoria. Ar. Portland 2:30 P. M. Le. Astoria. Ar. Portland 3:30 P. M. Le. Astoria. Ar. Portland 4:30 P. M. Le. Astoria. Ar. Portland 5:30 P. M. Le. Astoria. Ar. Portland 6:30 P. M. Le. Astoria. Ar. Portland 7:30 P. M. Le. Astoria. Ar. Portland 8:30 P. M. Le. Astoria. Ar. Portland 9:30 P. M. Le. Astoria. Ar. Portland 10:30 P. M. Le. Astoria. Ar. Portland 11:30 P. M. Le. Astoria. Ar. Portland 12:30 P. M. Le. Astoria. Ar. Portland 1:30 P. M. Le. Astoria. Ar. Portland 2:30 P. M. Le. Astoria. Ar. Portland 3:30 P. M. Le. Astoria. Ar. Portland 4:30 P. M. Le. Astoria. Ar. Portland 5:30 P. M. Le. Astoria. Ar. Portland 6:30 P. M. Le. Astoria. Ar. Portland 7:30 P. M. Le. Astoria. Ar. Portland 8:30 P. M. Le. Astoria. Ar. Portland 9:30 P. M. Le. Astoria. Ar. Portland 10:30 P. M. Le. Astoria. Ar. Portland 11:30 P. M. Le. Astoria. Ar. Portland 12:30 P. M. Le. Astoria. Ar. Portland 1:30 P. M. Le. Astoria. Ar. Portland 2:30 P. M. Le. Astoria. Ar. Portland 3:30 P. M. Le. Astoria. Ar. Portland 4:30 P. M. Le. Astoria. Ar. Portland 5:30 P. M. Le. Astoria. Ar. Portland 6:30 P. M. Le. Astoria. Ar. Portland 7:30 P. M. Le. Astoria. Ar. Portland 8:30 P. M. Le. Astoria. Ar. Portland 9:30 P. M. Le. Astoria. Ar. Portland 10:30 P. M. Le. Astoria. Ar. Portland 11:30 P. M. Le. Astoria. Ar. Portland 12:30 P. M. Le. Astoria. Ar. Portland 1:30 P. M. Le. Astoria. Ar. Portland 2:30 P. M. Le. Astoria. Ar. Portland 3:30 P. M. Le. Astoria. Ar. Portland 4:30 P. M. Le. Astoria. Ar. Portland 5:30 P. M. Le. Astoria. Ar. Portland 6:30 P. M. Le. Astoria. Ar. Portland 7:30 P. M. Le. Astoria. Ar. Portland 8:30 P. M. Le. Astoria. Ar. Portland 9:30 P. M. Le. Astoria. Ar. Portland 10:30 P. M. Le. Astoria. Ar. Portland 11:30 P. M. Le. Astoria. Ar. Portland 12:30 P. M. Le. Astoria. Ar. Portland 1:30 P. M. Le. Astoria. Ar. Portland 2:30 P. M. Le. Astoria. Ar. Portland 3:30 P. M. Le. Astoria. Ar. Portland 4:30 P. M. Le. Astoria. Ar. Portland 5:30 P. M. Le. Astoria. Ar. Portland 6:30 P. M. Le. Astoria. Ar. Portland 7:30 P. M. Le. Astoria. Ar. Portland 8:30 P. M. Le. Astoria. Ar. Portland 9:30 P. M. Le. Astoria. Ar. Portland 10:30 P. M. Le. Astoria. Ar. Portland 11:30 P. M. Le. Astoria. Ar. Portland 12:30 P. M. Le. Astoria. Ar. Portland 1:30 P. M. Le. Astoria. Ar. Portland 2:30 P. M. Le. Astoria. Ar. Portland 3:30 P. M. Le. Astoria. Ar. Portland 4:30 P. M. Le. Astoria. Ar. Portland 5:30 P. M. Le. Astoria. Ar. Portland 6:30 P. M. Le. Astoria. Ar. Portland 7:30 P. M. Le. Astoria. Ar. Portland 8:30 P. M. Le. Astoria. Ar. Portland 9:30 P. M. Le. Astoria. Ar. Portland 10:30 P. M. Le. Astoria. Ar. Portland 11:30 P. M. Le. Astoria. Ar. Portland 12:30 P. M. Le. Astoria. Ar. Portland 1:30 P. M. Le. Astoria. Ar. Portland 2:30 P. M. Le. Astoria. Ar. Portland 3:30 P. M. Le. Astoria. Ar. Portland 4:30 P. M. Le. Astoria. Ar. Portland 5:30 P. M. Le. Astoria. Ar. Portland 6:30 P. M. Le. Astoria. Ar. Portland 7:30 P. M. Le. Astoria. Ar. Portland 8:30 P. M. Le. Astoria. Ar. Portland 9:30 P. M. Le. Astoria. Ar. Portland 10:30 P. M. Le. Astoria. Ar. Portland 11:30 P. M. Le. Astoria. Ar. Portland 12:30 P. M. Le. Astoria. Ar. Portland 1:30 P. M. Le. Astoria. Ar. Portland 2:30 P. M. Le. Astoria. Ar. Portland 3:30 P. M. Le. Astoria. Ar. Portland 4:30 P. M. Le. Astoria. Ar. Portland 5:30 P. M. Le. Astoria. Ar. Portland 6:30 P. M. Le. Astoria. Ar. Portland 7:30 P. M. Le. Astoria. Ar. Portland 8:30 P. M. Le. Astoria. Ar. Portland 9:30 P. M. Le. Astoria. Ar. Portland 10:30 P. M. Le. Astoria. Ar. Portland 11:30 P. M. Le. Astoria. Ar. Portland 12:30 P. M. Le. Astoria. Ar. Portland 1:30 P. M. Le. Astoria. Ar. Portland 2:30 P. M. Le. Astoria. Ar. Portland 3:30 P. M. Le. Astoria. Ar. Portland 4:30 P. M. Le. Astoria. Ar. Portland 5:30 P. M. Le. Astoria. Ar. Portland 6:30 P. M. Le. Astoria. Ar. Portland 7:30 P. M. Le. Astoria. Ar. Portland 8:30 P. M. Le. Astoria. Ar. Portland 9:30 P. M. Le. Astoria. Ar. Portland 10:30 P. M. Le. Astoria. Ar. Portland 11:30 P. M. Le. Astoria. Ar. Portland 12:30 P. M. Le. Astoria. Ar. Portland 1:30 P. M. Le. Astoria. Ar. Portland 2:30 P. M. Le. Astoria. Ar. Portland 3:30 P. M. Le. Astoria. Ar. Portland 4:30 P. M. Le. Astoria. Ar. Portland 5:30 P. M. Le. Astoria. Ar. Portland 6:30 P. M. Le. Astoria. Ar. Portland 7:30 P. M. Le. Astoria. Ar. Portland 8:30 P. M. Le. Astoria. Ar. Portland 9:30 P. M. Le. Astoria. Ar. Portland 10:30 P. M. Le. Astoria. Ar. Portland 11:30 P. M. Le. Astoria. Ar. Portland 12:30 P. M. Le. Astoria. Ar. Portland 1:30 P. M. Le. Astoria. Ar. Portland 2:30 P. M. Le. Astoria. Ar. Portland 3:30 P. M. Le. Astoria. Ar. Portland 4:30 P. M. Le. Astoria. Ar. Portland 5:30 P. M. Le. Astoria. Ar. Portland 6:30 P. M. Le. Astoria. Ar. Portland 7:30 P. M. Le. Astoria. Ar. Portland 8:30 P. M. Le. Astoria. Ar. Portland 9:30 P. M. Le. Astoria. Ar. Portland 10:30 P. M. Le. Astoria. Ar. Portland 11:30 P. M. Le. Astoria. Ar. Portland 12:30 P. M. Le. Astoria. Ar. Portland 1:30 P. M. Le. Astoria. Ar. Portland 2:30 P. M. Le. Astoria. Ar. Portland 3:30 P. M. Le. Astoria. Ar. Portland 4:30 P. M. Le. Astoria. Ar. Portland 5:30 P. M. Le. Astoria. Ar. Portland 6:30 P. M. Le. Astoria. Ar. Portland 7:30 P. M. Le. Astoria. Ar. Portland 8:30 P. M. Le. Astoria. Ar. Portland 9:30 P. M. Le. Astoria. Ar. Portland 10:30 P. M. Le. Astoria. Ar. Portland 11:30 P. M. Le. Astoria. Ar. Portland 12:30 P. M. Le. Astoria. Ar. Portland 1:30 P. M. Le. Astoria. Ar. Portland 2:30 P. M. Le. Astoria. Ar. Portland 3:30 P. M. Le. Astoria. Ar. Portland 4:30 P. M. Le. Astoria. Ar. Portland 5:30 P. M. Le. Astoria. Ar. Portland 6:30 P. M. Le. Astoria. Ar. Portland 7:30 P. M. Le. Astoria. Ar. Portland 8:30 P. M. Le. Astoria. Ar. Portland 9:30 P. M. Le. Astoria. Ar. Portland 10:30 P. M. Le. Astoria. Ar. Portland 11:30 P. M. Le. Astoria. Ar. Portland 12:30 P. M. Le. Astoria. Ar. Portland 1:30 P. M. Le. Astoria. Ar. Portland 2:30 P. M. Le. Astoria. Ar. Portland 3:30 P. M. Le. Astoria. Ar. Portland 4:30 P. M. Le. Astoria. Ar. Portland 5:30 P. M. Le. Astoria. Ar. Portland 6:30 P. M. Le. Astoria. Ar. Portland 7:30 P. M. Le. Astoria. Ar. Portland 8:30 P. M. Le. Astoria. Ar. Portland 9:30 P. M. Le. Astoria. Ar. Portland 10:30 P. M. Le. Astoria. Ar. Portland 11:30 P. M. Le. Astoria. Ar. Portland 12:30 P. M. Le. Astoria. Ar. Portland 1:30 P. M. Le. Astoria. Ar. Portland 2:30 P. M. Le. Astoria. Ar. Portland 3:30 P. M. Le. Astoria. Ar. Portland 4:30 P. M. Le. Astoria. Ar. Portland 5:30 P. M. Le. Astoria. Ar. Portland 6:30 P. M. Le. Astoria. Ar. Portland 7:30 P. M. Le. Astoria. Ar. Portland 8:30 P. M. Le. Astoria. Ar. Portland 9:30 P. M. Le. Astoria. Ar. Portland 10:30 P. M. Le. Astoria. Ar. Portland 11:30 P. M. Le. Astoria. Ar. Portland 12:30 P. M. Le. Astoria. Ar. Portland 1:30 P. M. Le. Astoria. Ar. Portland 2:30 P. M. Le. Astoria. Ar. Portland 3:30 P. M. Le. Astoria. Ar. Portland 4:30 P. M. Le. Astoria. Ar. Portland 5:30 P. M. Le. Astoria. Ar. Portland 6:30 P. M. Le. Astoria. Ar. Portland 7:30 P. M. Le. Astoria. Ar. Portland 8:30 P. M. Le. Astoria. Ar. Portland 9:30 P. M. Le. Astoria. Ar. Portland 10:30 P. M. Le. Astoria. Ar. Portland 11:30 P. M. Le. Astoria. Ar. Portland 12:30 P. M. Le. Astoria. Ar. Portland 1:30 P. M. Le. Astoria. Ar. Portland 2:30 P. M. Le. Astoria. Ar. Portland 3:30 P. M. Le. Astoria. Ar. Portland 4:30 P. M. Le. Astoria. Ar. Portland 5:30 P. M. Le. Astoria. Ar. Portland 6:30 P. M. Le. Astoria. Ar. Portland 7:30 P. M. Le. Astoria. Ar. Portland 8:30 P. M. Le. Astoria. Ar. Portland 9:30 P. M. Le. Astoria. Ar. Portland 10:30 P. M. Le. Astoria. Ar. Portland 11:30 P. M. Le. Astoria. Ar. Portland 12:30 P. M. Le. Astoria. Ar. Portland 1:30 P. M. Le. Astoria. Ar. Portland 2:30 P. M. Le. Astoria. Ar. Portland 3:30 P. M. Le. Astoria. Ar. Portland 4:30 P. M. Le. Astoria. Ar. Portland 5:30 P. M. Le. Astoria. Ar. Portland 6:30 P. M. Le. Astoria. Ar. Portland 7:30 P. M. Le. Astoria. Ar. Portland 8:30 P. M. Le. Astoria. Ar. Portland 9:30 P. M. Le. Astoria. Ar. Portland 10:30 P. M. Le. Astoria. Ar. Portland 11:30 P. M. Le. Astoria. Ar. Portland 12:30 P. M. Le. Astoria. Ar. Portland 1:30 P. M. Le. Astoria. Ar. Portland 2:30 P. M. Le. Astoria. Ar. Portland 3:30 P. M. Le. Astoria. Ar. Portland 4:30 P. M. Le. Astoria. Ar. Portland 5:30 P. M. Le. Astoria. Ar. Portland 6:30 P. M. Le. Astoria. Ar. Portland 7:30 P. M. Le. Astoria. Ar. Portland 8:30 P. M. Le. Astoria. Ar. Portland 9:30 P. M. Le. Astoria. Ar. Portland 10:30 P. M. Le. Astoria. Ar. Portland 11:30 P. M. Le. Astoria. Ar. Portland 12:30 P. M. Le. Astoria. Ar. Portland 1:30 P. M. Le. Astoria. Ar. Portland 2:30 P. M. Le. Astoria. Ar. Portland 3:30 P. M. Le. Astoria. Ar. Portland 4:30 P. M. Le. Astoria. Ar. Portland 5:30 P. M. Le. Astoria. Ar. Portland 6:30 P. M. Le. Astoria. Ar. Portland 7:30 P. M. Le. Astoria. Ar. Portland 8:30 P. M. Le. Astoria. Ar. Portland 9:30 P. M. Le. Astoria. Ar. Portland 10:30 P. M. Le. Astoria. Ar. Portland 11:30 P. M. Le. Astoria. Ar. Portland 12:30 P. M. Le. Astoria. Ar. Portland 1:30 P. M. Le. Astoria. Ar. Portland 2:30 P. M. Le. Astoria. Ar. Portland 3:30 P. M. Le. Astoria. Ar. Portland 4:30 P. M. Le. Astoria. Ar. Portland 5:30 P. M. Le. Astoria. Ar. Portland 6:30 P. M. Le. Astoria. Ar. Portland 7:30 P. M. Le. Astoria. Ar. Portland 8:30 P. M. Le. Astoria. Ar. Portland 9:30 P. M. Le. Astoria. Ar. Portland 10:30 P. M. Le. Astoria. Ar. Portland 11:30 P. M. Le. Astoria. Ar. Portland 12:30 P. M. Le. Astoria. Ar. Portland 1:3