

Mothers

Anxiously watch declining health of their daughters. So many are cut off by consumption in early years that there is real cause for anxiety. In the early stages, when not beyond the reach of medicine, Hood's Sarsaparilla will restore the quality and quantity of the blood and thus give good health. Read the following letter:

"It is but just to write about my daughter Cora, aged 19. She was completely run down, declining, had that tired feeling, and friends said she would not live over three months. She had a bad

Cough

and nothing seemed to do her any good. I happened to read about Hood's Sarsaparilla and had her give it a trial. From the very first dose she began to get better. After taking a few bottles she was completely cured and her health has been the best ever since." MRS. ADDIE PECK, 22 Railroad Place, Amsterdam, N. Y.

"I will say that my mother has not stated my case in as strong words as I would have done. Hood's Sarsaparilla has truly cured me and I am now well." CORA PECK, Amsterdam, N. Y.

Be sure to get Hood's, because

Hood's Sarsaparilla

Is the One True Blood Purifier. All druggists. \$1. Prepared only by C. I. Hood & Co., Lowell, Mass.

are purely vegetable, and are highly beneficial.

FROM ALBERTA, CANADA.
[Continued from second page.]

grass visible, snow may be seen on Polk county hills and ice on the distant mountains.

The altitude of Stephen, the station at the summit of the Rocky mountains is 5,296 feet. Calgary, 120 miles east, is 3,388 feet—this station Olds is about 200 feet higher or about 3,000 feet above sea level, said to be the highest part of all the broad country. Edmonton, 150 miles further north is some 1,400 feet lower and has a little different climate. It is evident that the high altitude has to do with the wind, snow, hail storms and unseasonable frosts, all of which are a hindrance to the prosperity of this section of the country. Because of my experience I regret coming here. I do not think that those who have lived west of the Rockies and enjoyed the mild winters and the luxury of being able to grow or gather or and in season all the fruits and vegetables grown in that mild climate will be satisfied to live for any length of time in this place.

I meet very few persons here who expect to remain to die; they are submitting to privations for a time, hoping to accumulate some property, which when sold will enable them to remove to, and buy a home in some other place. Quite a number of persons have gone out from this place this spring. Some who had been here three years and by remaining a short time longer could have proved up and obtained the title to 160 acres of land; they evidently did not think it worth remaining for.

I am told that a large number of people are leaving the Edmonton district, one man said he counted 37 teams one day, on the trail going out. All this does not prove that a man may not succeed, for quite a number do, there are a few near this place who came here about three years ago and who brought some capital and cattle with them and who have been able to live and add to the number, and now are hopeful of being independent in a few years.

The man, however, who comes here to better his condition, will discover that he needs money (about \$1,000), to erect habitable buildings and shelter for stock, and purchase sufficient stock to make a start. He ought to understand the cattle business, as cattle are subject to disease and accident, and need care to prevent their loss. If he comes from your state, he will miss the trees, shrubs, fruits, and very much that makes a home and life worth living. He will find a limited market for what he may grow (cattle excepted), and when he has to buy necessities for his family, that he cannot grow, he will be surprised at the price asked. He will also discover that it is as difficult to control frost in Alberta as in Oregon.

Children Cry for Pitcher's Castoria.

ANNUAL ROSE SHOW

Of the Salem Floricultural Society for 1896.

- PREMIUM LIST.
1. Best collection of tea roses, not less than 12 varieties, \$5.
 2. Best collection of tea roses, 6 varieties, \$3.
 3. Best collection of tea roses, 2 varieties, \$1.
 4. Best collection of not less than 12 varieties of teas in bud, \$5.
 5. Best collection of 6 varieties of buds, teas, \$3.
 6. Best collection of hybrids, \$3.
 7. Best specimen of rose bush in bloom, pot grown, and introduced in 1895-'96, \$3.
 8. Best specimen of rose bush in bloom, pot grown, and introduced in '95-'96, \$1.50.
 9. Best collection of moss roses, buds, \$2.
 10. Best collection of Polyantha roses, \$1.
 11. Best collection of pink roses, not less than 5 varieties, \$2.
 12. Best collection of yellow roses, not less than 5 varieties, \$2.
 13. Best collection of red roses, not less than 5 varieties, \$2.
 14. Best display of Banksian roses, \$1.50.
 15. Best single rose of any variety, 1st \$1; 2d 50c.

Special premiums will be offered for the finest display of the following named varieties of roses.

Marechal Niel, Viscountess Folstone, Papa Gonlier, Catherine Mermet, Sunset, Marie Van Houitte, La France, Jacqueminot, Blene Marie Henriette, Wm. Allen Richardson, Homer Baroness Rothschild, Bride, La Marque, Madame Alfred Carrier, Malmaison, Madame Joseph Schwartz, Docteur Pasteur, Madame Welche, Isabella Grey, James Sprunt (bush or climbing), Par des Jardin (bush or climbing), Niphetos (bush or climbing), 50c each.

Finest display of roses from any point in Oregon outside of Marion county, \$5.

Premiums on other flowers than roses:

- 1st. Finest display of pansies, \$2.
- 2d. Finest display of pansies, \$1.50.
- 1st. Finest display of sweet peas, \$1.50.
- 2d. Finest display of sweet peas, \$1.

Largest number of varieties of native Oregon ferns in pots, \$1.50.

Best collection of wild flowers, gathered by a child under 14 years of age, each variety arranged separately, \$1, \$2.50; 2d, \$2.

Collection of twenty varieties of wild flowers, with correct botanical names, \$1.

Persons not wishing to enter for premiums are invited to display their roses at the fair.

RULES.

The rules, adopted by the society for governing the fair are as follows:

- 1.—The superintendent shall have general charge of the rose show.
- 2.—Judges shall be appointed by the executive committee, and all adjustment not covered by rules or published action of the executive committee shall be referred to that committee.
- 3.—Exhibitors not at the door by 1 p. m. on the first day of the show will be deemed from competition. Exhibits will be received from 8 a. m. till 1 p. m.
- 4.—All flowers must be handed to the superintendent or assistants at the door, and subjected to their arrangement.
- 5.—Receptacles for premium flowers will be furnished by the superintendent, but flowers for display may be arranged by the owner.
- 6.—All flowers entered for premiums must be distinctly named, if incorrectly named they will be excluded from premiums.
- 7.—Names of flowers cannot be changed after they are entered.
- 8.—No inferior plant or flower to receive a premium.
- 9.—No entry of any variety in collection of named roses shall consist of less than three specimens, at least one to be full blown.
- 10.—All plants must be owned by the exhibitors and have been in their possession at least three months before the show, and all cut flowers must be grown by the exhibitors.
- 11.—Plants and flowers cannot be removed until the close of the exhibition except by permission of the superintendent.
- 12.—No flower shall be entered for more than one premium.
- 13.—All flowers must be labeled with name before entering.

Women go on, heedlessly ignoring the dangers that lie right in the path of their thoughtlessness. They neglect little warnings until they get used to them. The warnings become louder and louder, and still they do not heed them. Their sickness increases like a snowball rolling down hill. The sickness comes on gradually, and they get used to it gradually, but it ruins their lives just the same. One woman in a hundred, perhaps, is perfectly healthy. Sometimes her weakness is inherited, sometimes acquired by carelessness. In every case, care and Dr. Pierce's Favorite Prescription will give her new life and strength and vitality. It will fill out the hollows in her cheeks, bring color to her lips, brighten her eyes, and make her really and truly a woman. The "Fatherly" is of inestimable value at three stages in the lives of women—when the girl becomes a woman, when the woman becomes a mother, and when the mother becomes incapable of maternity. At these times it gives safety and strength. It is the only medicine now before the public for women's peculiar ailments, adapted to her delicate organization by a regularly graduated physician—an experienced and skilled specialist in these maladies. It cannot do harm in any condition of the system. Its sales exceed the combined sales of all other medicines for women.

Every woman should have and read Dr. Pierce's Common Sense Medical Adviser, a great book of a thousand pages, profusely illustrated which will be sent free on receipt of 27 one-cent stamps, to pay on mailing only. Address, World's Dispensary Medical Association, No. 663 Main Street, Buffalo, N. Y.

Scientific American Agency for PATENTS. Caveats, Trade Marks, Designs, Patents, Copyrights, etc.

POZZONI'S COMPLEXION POWDER. Has been the standard for forty years and is more popular to-day than ever before.

Scientific American Agency for PATENTS. Caveats, Trade Marks, Designs, Patents, Copyrights, etc.

CASTORIA

for Infants and Children.

THIRTY years' observation of Castoria with the patronage of millions of persons, permit us to speak of it without guessing. It is unquestionably the best remedy for Infants and Children the world has ever known. It is harmless. Children like it. It gives them health. It will save their lives. In it Mothers have something which is absolutely safe and practically perfect as a child's medicine.

- Castoria destroys Worms.
- Castoria allays Feverishness.
- Castoria prevents vomiting Sour Curd.
- Castoria cures Diarrhoea and Wind Colic.
- Castoria relieves Teething Troubles.
- Castoria cures Constipation and Flatulency.

Castoria neutralizes the effects of carbonic acid gas or poisonous air. Castoria does not contain morphine, opium, or other narcotic property. Castoria assimilates the food, regulates the stomach and bowels, giving healthy and natural sleep. Castoria is put up in one-ounce bottles only. It is not sold in bulk. Don't allow any one to sell you anything else on the plea or promise that it is "just as good" and "will answer every purpose."

See that you get C-A-S-T-O-R-I-A.

The fac-simile signature of *Chas. H. Pitcher* is on every wrapper.

Children Cry for Pitcher's Castoria.

Through Tickets

NORTHERN PACIFIC R.R.

PULLMAN SLEEPING CARS. ELEGANT DINING CARS. TOURIST SLEEPING CARS.

Union Pacific System.

Through Pullman Palace Sleepers, Tourist Sleepers and Free Reclining Chairs daily between

PORTLAND to CHICAGO

Our trains are heated by steam and coal lighted by Fitch light.

Time to Chicago, 3 1/2 days.
Time to New York, 4 1/2 days.
Which is many hours quicker than competitors.

For rates, time tables and full information apply to

BOISE & BARKER, Agents, Salem, Or.

R. W. BAXTER, General Agent, 153 Third Street, Portland.

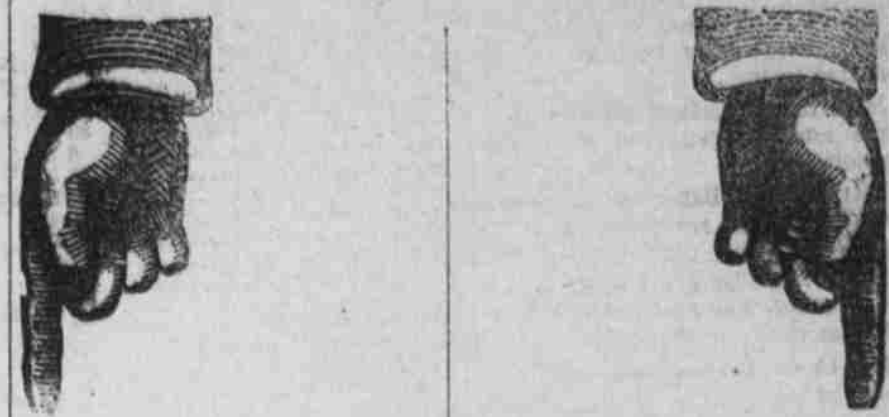


POZZONI'S COMPLEXION POWDER. Has been the standard for forty years and is more popular to-day than ever before.

Scientific American Agency for PATENTS. Caveats, Trade Marks, Designs, Patents, Copyrights, etc.

The Capital Journal

FOR 1896.



THE CAPITAL JOURNAL

For 25c. Daily one month. Weekly three months.

50 Cents will get you the Daily until after election, or the Weekly until January 1, 1897.

Our Great Features

THE JOURNAL is pre-eminently a paper for the people, in news, politics and editorial opinions.

Farm Department

THE JOURNAL does not pretend to be an agricultural paper, but keeps up a well-edited farm department, by a competent farmer, who knows the needs of the Oregon farmer. It also contains correct market reports.

Woman's Department

A large volume of social news and good home matter of interest to the feminine part of the family is one of the attractive features of THE JOURNAL, the only newspaper in Oregon employing a lady editor.

Youth's Department

This feature is one of great value to a family with boys and girls. THE JOURNAL will not publish wishy-washy stuff in this department, but good, bracing matter, of an entertaining and educating character.

A Modern Newspaper

THE JOURNAL is the first and only paper in Oregon to meet the hard times by reducing the price and sending out only what papers are paid for in advance, and runs no bills. All papers are stopped when the time expires. This is important, and you should take the benefit of it, instead of paying out more money for poorer papers. Subscribe now, and interest your friends in THE JOURNAL, if they are not already taking it.

QUEEN OF FASHIONS,

the best 16 page illustrated fashion magazine of New York free for one year. The above prices are net cash, and the cheapest combination ever offered. The "Queen" is a high-class practical, home magazine.

THE FARM NEWS.

A practical farm paper, edited by a staff of experienced agricultural writers, contributed to by the best known agriculturists of the country. It contains what the farmer wants.

"WOMANKIND!"

A handsome, attractive, home paper, to which every woman will give a hearty welcome.

THE TOLEDO BLADE.

That great national newspaper, which is known to everybody.

The Child Garden.

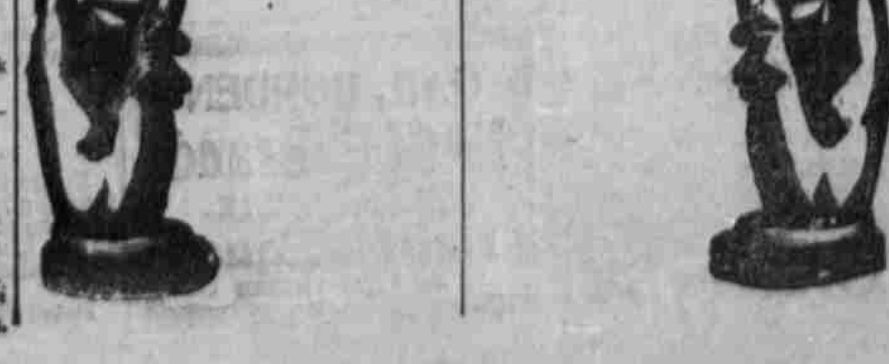
The delightful Chicago children's magazine. Just the thing to read to the little ones of the home circle. It brings the kindergarten into the home. Song, games and story. Beautifully illustrated, \$1 a year. Published by the Kindergarten Literature Co. six months.

PRIMARY SCHOOL OF POLITICS.

A book by E. Hofer, on the rotten primary system, price 25 cents. Can be had instead of any of the above premiums.

HOFER BROTHERS

EDITORS, Salem, - Oregon.



EAST AND SOUTH

Shasta Route.

VIA THE Southern Pacific Co.

California Express Train—Run daily between Portland and San Francisco.	
South	North
8:50 p. m. Lv. Portland ar. Portland	
11:00 p. m. Lv. Salem ar. Salem	
10:45 a. m. ar. San Fran. Lv. San Fran.	

Above trains stop at East Portland, Oregon City, Weabum, Salem, Turner, Marion, Jefferson, Albany, Albany Junction, Tangent, Shedd, Halsey, Harrisburg, Junction City, Eugene, Creswell, Drain, and all stations from Roseburg to Ashland, inclusive. ROSEBURG MAIL DAILY.

Salem Passenger.	
South	North
8:30 a. m. Lv. Portland ar. Portland	4:40 p. m. Lv. Portland ar. Portland
11:00 a. m. Lv. Salem ar. Salem	2:20 p. m. Lv. Salem ar. Salem
5:20 p. m. ar. Roseburg Lv. Roseburg	8:00 a. m. ar. Roseburg Lv. Roseburg

Express train daily except Sunday.

Express train daily except Sunday.

4:45 p. m. Lv. Portland ar. Portland

7:15 p. m. Lv. McMinnville ar. McMinnville

5:50 a. m. ar. McMinnville Lv. McMinnville

THROUGH TICKETS

to all points in the Eastern States, Canada and Europe can be obtained at lowest rates from W. W. SKINNER, Agent, Salem, E. P. ROGERS, Asst. G. F. & P. A., Portland, Or. R. KOEHLER, Manager.

Chicago, Milwaukee, & St. Paul Ry.



GLANCE AT THIS MAP.

Of the "Chicago, Milwaukee and St. Paul Railway" and note its connection with all transcontinental lines at St. Paul and Omaha, and remember when going east that its trains are lighted with electricity and heated by steam. Its equipment is superb. Elegant Buffet, library, smoking and sleeping cars, with free reclining chairs. Each sleeping car berth has an electric reading lamp, and its dining cars are the best in the world. Other lines are longer than this, but none are shorter, and no other offers the above luxurious accommodations. These are sufficient reasons for the popularity of "The Milwaukee." Coupon ticket agents in every railroad office will give you further information, or address

C. J. EDDY, General Agent, Portland

J. W. CASEY, Trav. Pass. Agent, Portland

O. R. & N. CO.

E. M'NEILL, RECEIVER.

TO THE EAST GIVES THE CHOICE

Two Transcontinental Routes.

Via Spokane Minneapolis St. Paul and Denver Omaha and Kansas City. Low rates to eastern cities.

OCEAN CITIES.

Portland—San Francisco.

If Steamers leave Alamosa dock, Portland May 17, 22, 27 and June 1, 6, 11, 16, 21, 26

Fare—Cabin, \$5; steerage, \$2.50.

WILLAMETTE RIVER DIVISION.

Portland—Eugene.

Steamers Ruth and Elmore for Portland daily except Sunday at 10 a. m.

For Corvallis daily except Sunday at 10:30 p. m.

For Eugene Monday and Thursday at 1:30 p. m.

Lowest freight and passenger rates. Round trip tickets very cheap. Tickets sold and baggage checked through to all points without extra transfer charges.

For full details call on Boise & Barker agents, Salem, Oregon, or address

W. H. HURLBURT, Gen'l Pas. Agt. Portland, Or.

G. M. POWERS, Local Agent.

Foot of Trades.

CARPET PAPER—Large lot of heavy brown wrapping paper for sale cheap. Just the thing for putting under carpets. Call at Journal office.