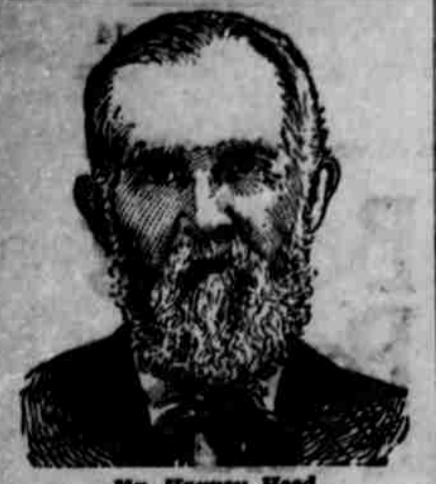


AN EASY WINNER. The solid vestibuled trains of the Chicago, Union Pacific & North-Western...



Mr. Harvey Hood, author of 'Catarrh, Heart Failure, Paralysis of the Throat'.

'I Thank God and Hood's Sarsaparilla for Perfect Health.' For the benefit of suffering humanity...

'Mrs. Falcioni,' a novel by Gilbert Parker, like Wm. H. Ballou's novels...

'Hood's Sarsaparilla' and my wife for my restoration to perfect health. HARVEY HOOD, Laceyville, O.

HOOD'S PILLS cure Constipation by restoring the peristaltic action of the alimentary canal.

BLOOD DISORDERS A New Remedy. A true specific—a positive and permanent elimination of all poisons from the blood...

MOFFAT CHEMICAL CO., 176 First Street, PORTLAND, OR.

Spring Races! FAIR GROUNDS, SALEM, July 4, 5, 6 and 7. PRIZES \$3,500.00.

Trotting, Pacing and Running CONTESTS.

PROGRAMME. Tuesday, July 4th.

Running, seven-eighths mile dash, purse \$200. Trotting, 2:20 class, 2 in 3.

Wednesday, July 5th. Running, one-half mile, 2 year olds, purse \$150.

Thursday, July 6th. Running, 1 mile dash, purse \$100. Trotting, 2:20 class, 2 in 3.

Friday, July 7th. Running, 1 mile dash, purse \$100. Trotting, 2:20 class, 2 in 3.

ADMISSION: Gentlemen, 50 cents. Ladies, 25 cents. Children over 12 years, 10 cents. Grand stand, 25 cents.

OFFICERS. President, H. W. COYNE. Vice President, W. J. KRWIN. Secretary, P. M. DEERY.

Bargains in Land. W. W. Smith, postmaster of Lewisville, and Harry D. Smith, lawyer for sale about 100 acres of good burning and stock land...

Pacific Coast Literary Review.

(New Books and Periodicals Reviewed in this Department for Publication in the DAILY and WEEKLY Editions of the CAPITAL JOURNAL.)

'The Honor of a Heart' is a typical German novel translated by May J. Safford, illustrated by F. A. Carter, Robt. Bonner's Sons, Pub., New York, 50 cts.

'An Automatic Wife' by Wm. H. Ballou, is full of the best work of a good writer. He is thoroughly vivacious, modern and reportorial.

'Mrs. Falcioni,' a novel by Gilbert Parker, like Wm. H. Ballou's novels, is the literary product of a progressive traveler and keen observer of what he saw and what others have seen and thought.

The Kindergarten Magazine of Chicago for June is a columnar double number. There are 144 pages, besides 18 pages of enclosure.

'The June number of "Education," a Boston monthly has a paper on "Some Pedagogical Blunders," by Miss Annie Hofer, editor of the Kindergarten Magazine, Chicago.

St. Louis Republic Review Writer: The school of fiction which Pierre Loti of the French Academy represents is a monstrous combination or attempted combination of Zola and Victor Hugo.

St. Louis Republic Review Writer: The school of fiction which Pierre Loti of the French Academy represents is a monstrous combination or attempted combination of Zola and Victor Hugo.

St. Louis Republic Review Writer: The school of fiction which Pierre Loti of the French Academy represents is a monstrous combination or attempted combination of Zola and Victor Hugo.

St. Louis Republic Review Writer: The school of fiction which Pierre Loti of the French Academy represents is a monstrous combination or attempted combination of Zola and Victor Hugo.

St. Louis Republic Review Writer: The school of fiction which Pierre Loti of the French Academy represents is a monstrous combination or attempted combination of Zola and Victor Hugo.

St. Louis Republic Review Writer: The school of fiction which Pierre Loti of the French Academy represents is a monstrous combination or attempted combination of Zola and Victor Hugo.

St. Louis Republic Review Writer: The school of fiction which Pierre Loti of the French Academy represents is a monstrous combination or attempted combination of Zola and Victor Hugo.

St. Louis Republic Review Writer: The school of fiction which Pierre Loti of the French Academy represents is a monstrous combination or attempted combination of Zola and Victor Hugo.

St. Louis Republic Review Writer: The school of fiction which Pierre Loti of the French Academy represents is a monstrous combination or attempted combination of Zola and Victor Hugo.

berry social at the North Howell Prairie church Wednesday evening, June 23. All invited.

Several of our Brookites have been attending court the past week. M. L. Jones made a flying trip to Portland Thursday.

E. K. Shaw attended the three days race at Independence last week. Rev. Myers attended church in South Salem Sunday.

Mrs. D. Gorline has been sick the past week with the chicken pox. E. K. Shaw and F. J. Clark drove to Salem Tuesday.

Grandma Harris and little Ina Jones were down visiting friends last week. Mrs. Shaffer and Miss Myrick spent Sunday at Mr. S. M. Jones' north of town.

P. Byrnes drove through Brooks Sunday on their way to Squire Evans'. Johnnie Schwartz and Arthur Girod drove to Salem Sunday.

Mr. Rennie and family of Selem spent Sunday with Mrs. Rennie's parents, Mr. Jno. Blanton.

There will be an ice cream and strawberry social at the Mission Bottom school house, Friday evening, June 23. E. K. Shaw came near having a serious accident Monday. He was driving a span of young mules to a load of wood when going down hill east of Brooks the lock being insufficient to hold the load it ran onto the colts.

It is gratifying to know that the absence of wealth, property, bank, stocks, social position, church life, or any of the so-called advantages of civilization, places a barrier or limitation upon the culture or development of the mind if it has fixed itself upon the attainment of spiritual illumination.

We will give One Hundred Dollars for any case of Deafness (caused by catarrh) that cannot be cured by Hall's Catarrh Cure. Send for circulars, free. F. J. CHENEY & Co., Toledo, O. Sold by Druggists, 75c.

Baby cried, Mother sighed, Doctor prescribed: Castoria.

FROM BROOKS. Jole Jones drove over to Monmouth Sunday.

Mrs. Winifred Wormwood visited her parents Thursday.

Prof. Myers and wife returned home on the 10:55 train Tuesday.

Mr. and Mrs. Kester of Howell prairie visited with F. J. Clark's Sunday.

Mr. Ray Blanton returned from Salem Sunday.

A. and B. A. Jones visited the latter's parents north of Brooks Sunday.

Mr. L. Beckner and wife returned from Eastern Oregon Wednesday.

Quite a number of our citizens attended the social at Parker's Friday evening.

Mr. E. Case, of Portland, was has who been visiting Mr. Shaffer's family left us Saturday.

Rev. Myers and family attended the commencement exercises at the University Thursday.

There will be an ice cream and strawberry social at the North Howell Prairie church Wednesday evening, June 23. All invited.

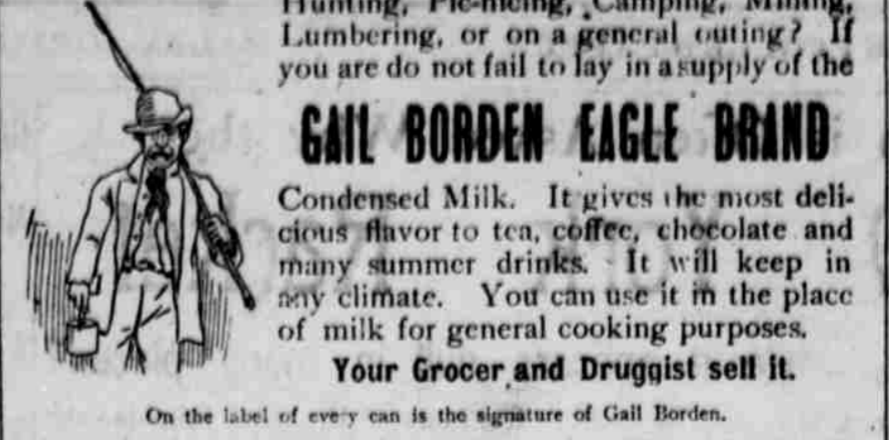
Several of our Brookites have been attending court the past week. M. L. Jones made a flying trip to Portland Thursday.

E. K. Shaw attended the three days race at Independence last week. Rev. Myers attended church in South Salem Sunday.

Mrs. D. Gorline has been sick the past week with the chicken pox. E. K. Shaw and F. J. Clark drove to Salem Tuesday.

Grandma Harris and little Ina Jones were down visiting friends last week. Mrs. Shaffer and Miss Myrick spent Sunday at Mr. S. M. Jones' north of town.

ARE YOU GOING A FISHING?



Hunting, Pic-nicing, Camping, Mining, Lumbering, or on a general outing? If you are do not fail to lay in a supply of the GAIL BORDEN EAGLE BRAND

Condensed Milk. It gives the most delicious flavor to tea, coffee, chocolate and many summer drinks. It will keep in any climate. You can use it in the place of milk for general cooking purposes.

Your Grocer and Druggist sell it. On the label of every can is the signature of Gail Borden.

THE NEW WILLAMETTE STABLES

Completed and ready to wait on customers. Horses boarded by day or week, at reasonable prices. We keep a full line of Trucks, Drays and Express to meet all demands. Also keep the finest Stallions in this county, for service. Barn and residence 2 block south of postoffice. RYAN & CO.

WILLIAM NILES & CO., INCORPORATED 1891

Los Angeles, California. BREEDERS AND EXPORTERS OF FINE CATTLE, HOGS, POULTRY. Berkshire & Poland-China Pigs a Specialty.

Fancy Poultry, All Varieties. Eggs for Hatching. Niles Pacific Coast Poultry and Stock, Incorporated, 50 cents by mail. SEND FOR CIRCULARS.

CLEAN.

If you would be clean and have your clothes done up in the neatest and dressiest manner, take them to the SALEM STEAM LAUNDRY

where all work is done by white labor and in the most prompt manner: COLONEL J. OLMSTED, Liberty Street.

CHAS. WOLZ, PROPRIETOR OF THE GERMAN MARKET

South Commercial St., Salem. All kinds Fresh, salt and Smoked Meats and Sausages. FREE DELIVERY.

HORSE TRAINING. MAKE NO MORE MISTAKES. CHARLES A. SMITH RUNS The Rustler Wood Saw

And he doesn't burn up half your wood, in fuel, when he saws it. Make your contracts with him personally or have one at Vaidia's cigar store. Dearborn's book store, 458 summer street, or address me by mail. 6-14-93

SMITH BROS., CONTRACTORS & PLASTERERS.

Leave orders at Cottle-Parkhurst block, room 18, 2nd em, Oregon.

HOWARD, The House Mover. 451 Marion Street.

Has the best facilities for moving and raising houses. Leave orders at Gray Bros., or address Salem, Oregon.

J. H. HAAS, THE WATCHMAKER.

215 1/2 Commercial St., Salem, Oregon. (Next door to Klein's.) Specialty of Spectacles and repairing Clocks, Watches and Jewelry.

Smith Premier Typewriter.

2,000 pounds Kir's SOAP or as good. 2,000 pounds Proctor & Gamble's Ivory, or as good.

Deutscher Advocat. POSTOFFICE BLOCK, SALEM, OR.

Admitted to practice in all the courts. Special attention given to German speaking people and business at the county and state offices. K. MOFFAT, Notary Public.

TOBACCO. STATIONERY.

1 doz. fine, Bede Hammer brand. 2 gross pens, Gillott's No. 40. 1 gross lead pencils, number 1, No. 2. 1 gross London Incontinent pens, No. 1 (gentle). 1 gross London Incontinent pens, No. 2 (gentle). 1 gross London Incontinent pens, No. 3 (gentle). 1 gross London Incontinent pens, No. 4 (gentle). 1 gross London Incontinent pens, No. 5 (gentle). 1 gross London Incontinent pens, No. 6 (gentle). 1 gross London Incontinent pens, No. 7 (gentle). 1 gross London Incontinent pens, No. 8 (gentle). 1 gross London Incontinent pens, No. 9 (gentle). 1 gross London Incontinent pens, No. 10 (gentle). 1 gross London Incontinent pens, No. 11 (gentle). 1 gross London Incontinent pens, No. 12 (gentle). 1 gross London Incontinent pens, No. 13 (gentle). 1 gross London Incontinent pens, No. 14 (gentle). 1 gross London Incontinent pens, No. 15 (gentle). 1 gross London Incontinent pens, No. 16 (gentle). 1 gross London Incontinent pens, No. 17 (gentle). 1 gross London Incontinent pens, No. 18 (gentle). 1 gross London Incontinent pens, No. 19 (gentle). 1 gross London Incontinent pens, No. 20 (gentle). 1 gross London Incontinent pens, No. 21 (gentle). 1 gross London Incontinent pens, No. 22 (gentle). 1 gross London Incontinent pens, No. 23 (gentle). 1 gross London Incontinent pens, No. 24 (gentle). 1 gross London Incontinent pens, No. 25 (gentle). 1 gross London Incontinent pens, No. 26 (gentle). 1 gross London Incontinent pens, No. 27 (gentle). 1 gross London Incontinent pens, No. 28 (gentle). 1 gross London Incontinent pens, No. 29 (gentle). 1 gross London Incontinent pens, No. 30 (gentle). 1 gross London Incontinent pens, No. 31 (gentle). 1 gross London Incontinent pens, No. 32 (gentle). 1 gross London Incontinent pens, No. 33 (gentle). 1 gross London Incontinent pens, No. 34 (gentle). 1 gross London Incontinent pens, No. 35 (gentle). 1 gross London Incontinent pens, No. 36 (gentle). 1 gross London Incontinent pens, No. 37 (gentle). 1 gross London Incontinent pens, No. 38 (gentle). 1 gross London Incontinent pens, No. 39 (gentle). 1 gross London Incontinent pens, No. 40 (gentle). 1 gross London Incontinent pens, No. 41 (gentle). 1 gross London Incontinent pens, No. 42 (gentle). 1 gross London Incontinent pens, No. 43 (gentle). 1 gross London Incontinent pens, No. 44 (gentle). 1 gross London Incontinent pens, No. 45 (gentle). 1 gross London Incontinent pens, No. 46 (gentle). 1 gross London Incontinent pens, No. 47 (gentle). 1 gross London Incontinent pens, No. 48 (gentle). 1 gross London Incontinent pens, No. 49 (gentle). 1 gross London Incontinent pens, No. 50 (gentle). 1 gross London Incontinent pens, No. 51 (gentle). 1 gross London Incontinent pens, No. 52 (gentle). 1 gross London Incontinent pens, No. 53 (gentle). 1 gross London Incontinent pens, No. 54 (gentle). 1 gross London Incontinent pens, No. 55 (gentle). 1 gross London Incontinent pens, No. 56 (gentle). 1 gross London Incontinent pens, No. 57 (gentle). 1 gross London Incontinent pens, No. 58 (gentle). 1 gross London Incontinent pens, No. 59 (gentle). 1 gross London Incontinent pens, No. 60 (gentle). 1 gross London Incontinent pens, No. 61 (gentle). 1 gross London Incontinent pens, No. 62 (gentle). 1 gross London Incontinent pens, No. 63 (gentle). 1 gross London Incontinent pens, No. 64 (gentle). 1 gross London Incontinent pens, No. 65 (gentle). 1 gross London Incontinent pens, No. 66 (gentle). 1 gross London Incontinent pens, No. 67 (gentle). 1 gross London Incontinent pens, No. 68 (gentle). 1 gross London Incontinent pens, No. 69 (gentle). 1 gross London Incontinent pens, No. 70 (gentle). 1 gross London Incontinent pens, No. 71 (gentle). 1 gross London Incontinent pens, No. 72 (gentle). 1 gross London Incontinent pens, No. 73 (gentle). 1 gross London Incontinent pens, No. 74 (gentle). 1 gross London Incontinent pens, No. 75 (gentle). 1 gross London Incontinent pens, No. 76 (gentle). 1 gross London Incontinent pens, No. 77 (gentle). 1 gross London Incontinent pens, No. 78 (gentle). 1 gross London Incontinent pens, No. 79 (gentle). 1 gross London Incontinent pens, No. 80 (gentle). 1 gross London Incontinent pens, No. 81 (gentle). 1 gross London Incontinent pens, No. 82 (gentle). 1 gross London Incontinent pens, No. 83 (gentle). 1 gross London Incontinent pens, No. 84 (gentle). 1 gross London Incontinent pens, No. 85 (gentle). 1 gross London Incontinent pens, No. 86 (gentle). 1 gross London Incontinent pens, No. 87 (gentle). 1 gross London Incontinent pens, No. 88 (gentle). 1 gross London Incontinent pens, No. 89 (gentle). 1 gross London Incontinent pens, No. 90 (gentle). 1 gross London Incontinent pens, No. 91 (gentle). 1 gross London Incontinent pens, No. 92 (gentle). 1 gross London Incontinent pens, No. 93 (gentle). 1 gross London Incontinent pens, No. 94 (gentle). 1 gross London Incontinent pens, No. 95 (gentle). 1 gross London Incontinent pens, No. 96 (gentle). 1 gross London Incontinent pens, No. 97 (gentle). 1 gross London Incontinent pens, No. 98 (gentle). 1 gross London Incontinent pens, No. 99 (gentle). 1 gross London Incontinent pens, No. 100 (gentle). 1 gross London Incontinent pens, No. 101 (gentle). 1 gross London Incontinent pens, No. 102 (gentle). 1 gross London Incontinent pens, No. 103 (gentle). 1 gross London Incontinent pens, No. 104 (gentle). 1 gross London Incontinent pens, No. 105 (gentle). 1 gross London Incontinent pens, No. 106 (gentle). 1 gross London Incontinent pens, No. 107 (gentle). 1 gross London Incontinent pens, No. 108 (gentle). 1 gross London Incontinent pens, No. 109 (gentle). 1 gross London Incontinent pens, No. 110 (gentle). 1 gross London Incontinent pens, No. 111 (gentle). 1 gross London Incontinent pens, No. 112 (gentle). 1 gross London Incontinent pens, No. 113 (gentle). 1 gross London Incontinent pens, No. 114 (gentle). 1 gross London Incontinent pens, No. 115 (gentle). 1 gross London Incontinent pens, No. 116 (gentle). 1 gross London Incontinent pens, No. 117 (gentle). 1 gross London Incontinent pens, No. 118 (gentle). 1 gross London Incontinent pens, No. 119 (gentle). 1 gross London Incontinent pens, No. 120 (gentle). 1 gross London Incontinent pens, No. 121 (gentle). 1 gross London Incontinent pens, No. 122 (gentle). 1 gross London Incontinent pens, No. 123 (gentle). 1 gross London Incontinent pens, No. 124 (gentle). 1 gross London Incontinent pens, No. 125 (gentle). 1 gross London Incontinent pens, No. 126 (gentle). 1 gross London Incontinent pens, No. 127 (gentle). 1 gross London Incontinent pens, No. 128 (gentle). 1 gross London Incontinent pens, No. 129 (gentle). 1 gross London Incontinent pens, No. 130 (gentle). 1 gross London Incontinent pens, No. 131 (gentle). 1 gross London Incontinent pens, No. 132 (gentle). 1 gross London Incontinent pens, No. 133 (gentle). 1 gross London Incontinent pens, No. 134 (gentle). 1 gross London Incontinent pens, No. 135 (gentle). 1 gross London Incontinent pens, No. 136 (gentle). 1 gross London Incontinent pens, No. 137 (gentle). 1 gross London Incontinent pens, No. 138 (gentle). 1 gross London Incontinent pens, No. 139 (gentle). 1 gross London Incontinent pens, No. 140 (gentle). 1 gross London Incontinent pens, No. 141 (gentle). 1 gross London Incontinent pens, No. 142 (gentle). 1 gross London Incontinent pens, No. 143 (gentle). 1 gross London Incontinent pens, No. 144 (gentle). 1 gross London Incontinent pens, No. 145 (gentle). 1 gross London Incontinent pens, No. 146 (gentle). 1 gross London Incontinent pens, No. 147 (gentle). 1 gross London Incontinent pens, No. 148 (gentle). 1 gross London Incontinent pens, No. 149 (gentle). 1 gross London Incontinent pens, No. 150 (gentle). 1 gross London Incontinent pens, No. 151 (gentle). 1 gross London Incontinent pens, No. 152 (gentle). 1 gross London Incontinent pens, No. 153 (gentle). 1 gross London Incontinent pens, No. 154 (gentle). 1 gross London Incontinent pens, No. 155 (gentle). 1 gross London Incontinent pens, No. 156 (gentle). 1 gross London Incontinent pens, No. 157 (gentle). 1 gross London Incontinent pens, No. 158 (gentle). 1 gross London Incontinent pens, No. 159 (gentle). 1 gross London Incontinent pens, No. 160 (gentle). 1 gross London Incontinent pens, No. 161 (gentle). 1 gross London Incontinent pens, No. 162 (gentle). 1 gross London Incontinent pens, No. 163 (gentle). 1 gross London Incontinent pens, No. 164 (gentle). 1 gross London Incontinent pens, No. 165 (gentle). 1 gross London Incontinent pens, No. 166 (gentle). 1 gross London Incontinent pens, No. 167 (gentle). 1 gross London Incontinent pens, No. 168 (gentle). 1 gross London Incontinent pens, No. 169 (gentle). 1 gross London Incontinent pens, No. 170 (gentle). 1 gross London Incontinent pens, No. 171 (gentle). 1 gross London Incontinent pens, No. 172 (gentle). 1 gross London Incontinent pens, No. 173 (gentle). 1 gross London Incontinent pens, No. 174 (gentle). 1 gross London Incontinent pens, No. 175 (gentle). 1 gross London Incontinent pens, No. 176 (gentle). 1 gross London Incontinent pens, No. 177 (gentle). 1 gross London Incontinent pens, No. 178 (gentle). 1 gross London Incontinent pens, No. 179 (gentle). 1 gross London Incontinent pens, No. 180 (gentle). 1 gross London Incontinent pens, No. 181 (gentle). 1 gross London Incontinent pens, No. 182 (gentle). 1 gross London Incontinent pens, No. 183 (gentle). 1 gross London Incontinent pens, No. 184 (gentle). 1 gross London Incontinent pens, No. 185 (gentle). 1 gross London Incontinent pens, No. 186 (gentle). 1 gross London Incontinent pens, No. 187 (gentle). 1 gross London Incontinent pens, No. 188 (gentle). 1 gross London Incontinent pens, No. 189 (gentle). 1 gross London Incontinent pens, No. 190 (gentle). 1 gross London Incontinent pens, No. 191 (gentle). 1 gross London Incontinent pens, No. 192 (gentle). 1 gross London Incontinent pens, No. 193 (gentle). 1 gross London Incontinent pens, No. 194 (gentle). 1 gross London Incontinent pens, No. 195 (gentle). 1 gross London Incontinent pens, No. 196 (gentle). 1 gross London Incontinent pens, No. 197 (gentle). 1 gross London Incontinent pens, No. 198 (gentle). 1 gross London Incontinent pens, No. 199 (gentle). 1 gross London Incontinent pens, No. 200 (gentle). 1 gross London Incontinent pens, No. 201 (gentle). 1 gross London Incontinent pens, No. 202 (gentle). 1 gross London Incontinent pens, No. 203 (gentle). 1 gross London Incontinent pens, No. 204 (gentle). 1 gross London Incontinent pens, No. 205 (gentle). 1 gross London Incontinent pens, No. 206 (gentle). 1 gross London Incontinent pens, No. 207 (gentle). 1 gross London Incontinent pens, No. 208 (gentle). 1 gross London Incontinent pens, No. 209 (gentle). 1 gross London Incontinent pens, No. 210 (gentle). 1 gross London Incontinent pens, No. 211 (gentle). 1 gross London Incontinent pens, No. 212 (gentle). 1 gross London Incontinent pens, No. 213 (gentle). 1 gross London Incontinent pens, No. 214 (gentle). 1 gross London Incontinent pens, No. 215 (gentle). 1 gross London Incontinent pens, No. 216 (gentle). 1 gross London Incontinent pens, No. 217 (gentle). 1 gross London Incontinent pens, No. 218 (gentle). 1 gross London Incontinent pens, No. 219 (gentle). 1 gross London Incontinent pens, No. 220 (gentle). 1 gross London Incontinent pens, No. 221 (gentle). 1 gross London Incontinent pens, No. 222 (gentle). 1 gross London Incontinent pens, No. 223 (gentle). 1 gross London Incontinent pens, No. 224 (gentle). 1 gross London Incontinent pens, No. 225 (gentle). 1 gross London Incontinent pens, No. 226 (gentle). 1 gross London Incontinent pens, No. 227 (gentle). 1 gross London Incontinent pens, No. 228 (gentle). 1 gross London Incontinent pens, No. 229 (gentle). 1 gross London Incontinent pens, No. 230 (gentle). 1 gross London Incontinent pens, No. 231 (gentle). 1 gross London Incontinent pens, No. 232 (gentle). 1 gross London Incontinent pens, No. 233 (gentle). 1 gross London Incontinent pens, No. 234 (gentle). 1 gross London Incontinent pens, No. 235 (gentle). 1 gross London Incontinent pens, No. 236 (gentle). 1 gross London Incontinent pens, No. 237 (gentle). 1 gross London Incontinent pens, No. 238 (gentle). 1 gross London Incontinent pens, No. 239 (gentle). 1 gross London Incontinent pens, No. 240 (gentle). 1 gross London Incontinent pens, No. 241 (gentle). 1 gross London Incontinent pens, No. 242 (gentle). 1 gross London Incontinent pens, No. 243 (gentle). 1 gross London Incontinent pens, No. 244 (gentle). 1 gross London Incontinent pens, No. 245 (gentle). 1 gross London Incontinent pens, No. 246 (gentle). 1 gross London Incontinent pens, No. 247 (gentle). 1 gross London Incontinent pens, No. 248 (gentle). 1 gross London Incontinent pens, No. 249 (gentle). 1 gross London Incontinent pens, No. 250 (gentle). 1 gross London Incontinent pens, No. 251 (gentle). 1 gross London Incontinent pens, No. 252 (gentle). 1 gross London Incontinent pens, No. 253 (gentle). 1 gross London Incontinent pens, No. 254 (gentle). 1 gross London Incontinent pens, No. 255 (gentle). 1 gross London Incontinent pens, No. 256 (gentle). 1 gross London Incontinent pens, No. 257 (gentle). 1 gross London Incontinent pens, No. 258 (gentle). 1 gross London Incontinent pens, No. 259 (gentle). 1 gross London Incontinent pens, No. 260 (gentle). 1 gross London Incontinent pens, No. 261 (gentle). 1 gross London Incontinent pens, No. 262 (gentle). 1 gross London Incontinent pens, No. 263 (gentle). 1 gross London Incontinent pens, No. 264 (gentle). 1 gross London Incontinent pens, No. 265 (gentle). 1 gross London Incontinent pens, No. 266 (gentle). 1 gross London Incontinent pens, No. 267 (gentle). 1 gross London Incontinent pens, No. 268 (gentle). 1 gross London Incontinent pens, No. 269 (gentle). 1 gross London Incontinent pens, No. 270 (gentle). 1 gross London Incontinent pens, No. 271 (gentle). 1 gross London Incontinent pens, No. 272 (gentle). 1 gross London Incontinent pens, No. 273 (gentle). 1 gross London Incontinent pens, No. 274 (gentle). 1 gross London Incontinent pens, No. 275 (gentle). 1 gross London Incontinent pens, No. 276 (gentle). 1 gross London Incontinent pens, No. 277 (gentle). 1 gross London Incontinent pens, No. 278 (gentle). 1 gross London Incontinent pens, No. 279 (gentle). 1 gross London Incontinent pens, No. 280 (gentle). 1 gross London Incontinent pens, No. 281 (gentle). 1 gross London Incontinent pens, No. 282 (gentle). 1 gross London Incontinent pens, No. 283 (gentle). 1 gross London Incontinent pens, No. 284 (gentle). 1 gross London Incontinent pens, No. 285 (gentle). 1 gross London Incontinent pens, No. 286 (gentle). 1 gross London Incontinent pens, No. 287 (gentle). 1 gross London Incontinent pens, No. 288 (gentle). 1 gross London Incontinent pens, No. 289 (gentle). 1 gross London Incontinent pens, No. 290 (gentle). 1 gross London Incontinent pens, No. 291 (gentle). 1 gross London Incontinent pens, No. 292 (gentle). 1 gross London Incontinent pens, No. 293 (gentle). 1 gross London Incontinent pens, No. 294 (gentle). 1 gross London Incontinent pens, No. 295 (gentle). 1 gross London Incontinent pens, No. 296 (gentle). 1 gross London Incontinent pens, No. 297 (gentle). 1 gross London Incontinent pens, No. 298 (gentle). 1 gross London Incontinent pens, No. 299 (gentle). 1 gross London Incontinent pens, No. 300 (gentle). 1 gross London Incontinent pens, No. 301 (gentle). 1 gross London Incontinent pens, No. 302 (gentle). 1 gross London Incontinent pens, No. 303 (gentle). 1 gross London Incontinent pens, No. 304 (gentle). 1 gross London Incontinent pens, No. 305 (gentle). 1 gross London Incontinent pens, No. 306 (gentle). 1 gross London Incontinent pens, No. 307 (gentle). 1 gross London Incontinent pens, No. 308 (gentle). 1 gross London Incontinent pens, No. 309 (gentle). 1 gross London Incontinent pens, No. 310 (gentle). 1 gross London Incontinent pens, No. 311 (gentle). 1 gross London Incontinent pens, No. 312 (gentle). 1 gross London Incontinent pens, No. 313 (gentle). 1 gross London Incontinent pens, No. 314 (gentle). 1 gross London Incontinent pens, No. 315 (gentle). 1 gross London Incontinent pens, No. 316 (gentle). 1 gross London Incontinent pens, No. 317 (gentle). 1 gross London Incontinent pens, No. 318 (gentle). 1 gross London Incontinent pens, No. 319 (gentle). 1 gross London Incontinent pens, No. 320 (gentle). 1 gross London Incontinent pens, No. 321 (gentle). 1 gross London Incontinent pens, No. 322 (gentle). 1 gross London Incontinent pens, No. 323 (gentle). 1 gross London Incontinent pens, No. 324 (gentle). 1 gross London Incontinent pens, No. 325 (gentle). 1 gross London Incontinent pens, No. 326 (gentle). 1 gross London Incontinent pens, No. 327 (gentle). 1 gross London Incontinent pens, No. 328 (gentle). 1 gross London Incontinent pens, No. 329 (gentle). 1 gross London Incontinent pens, No. 330 (gentle). 1 gross London Incontinent pens, No. 331 (gentle). 1 gross London Incontinent pens, No. 332 (gentle). 1 gross London Incontinent pens, No. 333 (gentle). 1 gross London Incontinent pens, No. 334 (gentle). 1 gross London Incontinent pens, No. 335 (gentle). 1 gross London Incontinent pens, No. 336 (gentle). 1 gross London Incontinent pens, No. 337 (gentle). 1 gross London Incontinent pens, No. 338 (gentle). 1 gross London Incontinent pens, No. 339 (gentle). 1 gross London Incontinent pens, No. 340 (gentle). 1 gross London Incontinent pens, No. 341 (gentle). 1 gross London Incontinent pens, No. 342 (gentle). 1 gross London Incontinent pens, No. 343 (gentle). 1 gross London Incontinent pens, No. 344 (gentle). 1 gross London Incontinent pens, No. 345 (gentle). 1 gross London Incontinent pens, No. 346 (gentle). 1 gross London Incontinent pens, No. 347 (gentle). 1 gross London Incontinent pens, No. 348 (gentle). 1 gross London Incontinent pens, No. 349 (gentle). 1 gross London Incontinent pens, No. 350 (gentle). 1 gross London Incontinent pens, No. 351 (gentle). 1 gross London Incontinent pens, No. 352 (gentle). 1 gross London Incontinent pens, No. 353 (gentle). 1 gross London Incontinent pens, No. 354 (gentle). 1 gross London Incontinent pens, No. 355 (gentle). 1 gross London Incontinent pens, No. 356 (gentle). 1 gross London Incontinent pens, No. 357 (gentle). 1 gross London Incontinent pens, No. 358 (gentle). 1 gross London Incontinent pens, No. 359 (gentle). 1 gross London Incontinent pens, No. 360 (gentle). 1 gross London Incontinent pens, No. 361 (gentle). 1 gross London Incontinent pens, No. 362 (gentle). 1 gross London Incontinent pens, No. 363 (gentle). 1 gross London Incontinent pens, No. 364 (gentle). 1 gross London Incontinent pens, No. 365 (gentle). 1 gross London Incontinent pens, No. 366 (gentle). 1 gross London Incontinent pens, No. 367 (gentle). 1 gross London Incontinent pens, No. 368 (gentle). 1 gross London Incontinent pens, No. 369 (gentle). 1 gross London Incontinent pens, No. 370 (gentle). 1 gross London Incontinent pens, No. 371 (gentle). 1 gross London Incontinent pens, No. 372 (gentle). 1 gross London Incontinent pens, No. 373 (gentle). 1 gross London Incontinent pens, No. 374 (gentle). 1 gross London Incontinent pens, No. 375 (gentle). 1 gross London Incontinent pens, No. 376 (gentle). 1 gross London Incontinent pens, No. 377 (gentle). 1 gross London Incontinent pens, No. 378 (gentle). 1 gross London Incontinent pens, No. 379 (gentle). 1 gross London Incontinent pens, No. 380 (gentle). 1 gross London Incontinent pens, No. 381 (gentle). 1 gross London Incontinent pens, No. 382 (gentle). 1 gross London Incontinent pens, No. 383 (gentle). 1 gross London Incontinent pens, No. 384 (gentle). 1 gross London Incontinent pens, No. 385 (gentle). 1 gross London Incontinent pens, No. 386 (gentle). 1 gross London Incontinent pens, No. 3