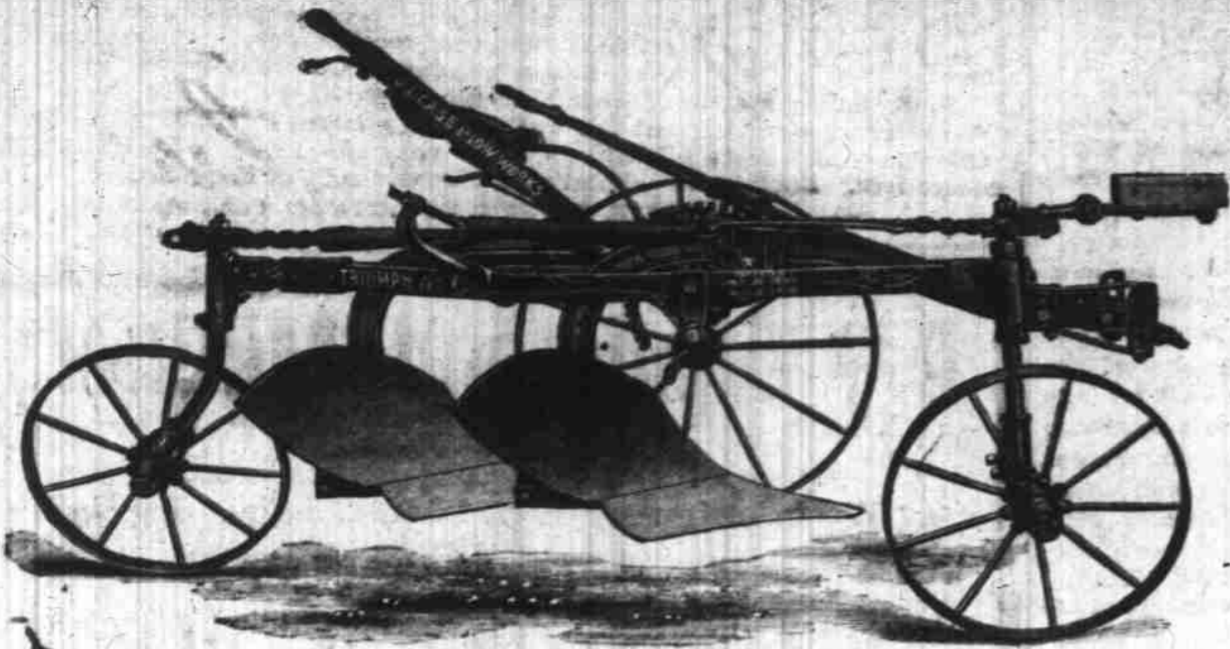


The Salem Branch of the... MITCHELL, LEWIS & STAVAR CO.

49 to 55 State Street

The Triumph Gang Plow



MODEL C

It combines perfectly the four great essentials in a gang plow.

- 1st. It is strong and durable in construction.
- 2d. It does absolutely perfect work.
- 3d. It is extremely light of draft.
- 4th. It is easy for the operator to handle.

It is constructed on the lines of the Triumph Sulky Plow, and the same features that have made it the standard make this the most perfect gang yet produced.

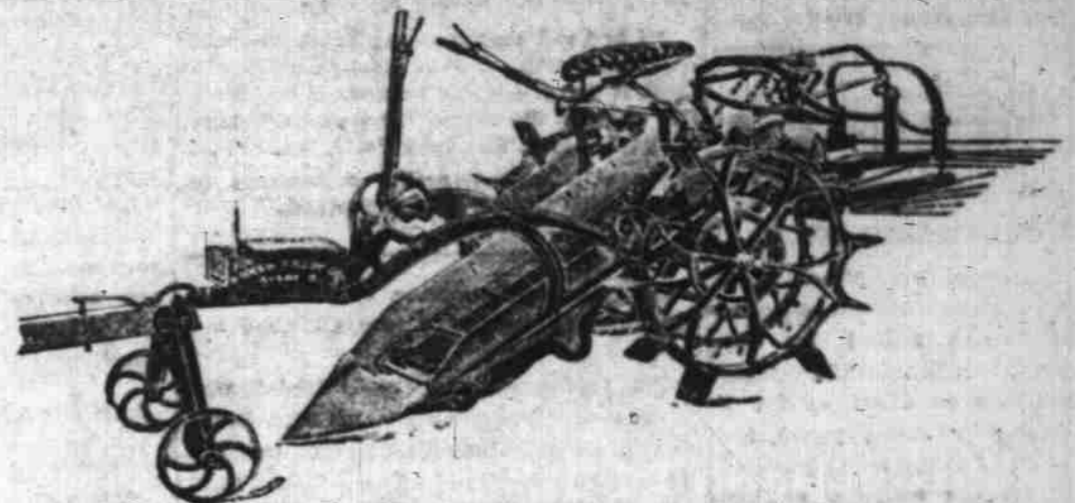
Why It Is the Most Perfect Gang

The wheels carry the entire weight. A most important feature and found only in the Triumph. It is a plow mounted upon wheels, and not simply a plow with a wheel attachment for the convenience of the operator. The wheels carry the frame, and the plows bolted to the beams are suspended within that frame. The operator, by means of the main lever, has complete control of those bottoms, and unless grossly misadjusted, every particle of weight—driver, frame, bottoms and furrows—is carried upon the wheels.

- The side draft is completely overcome.
- Plows always turn uniformly deep furrow.
- It follows closely in the line of draft.
- Raised to full height by one motion of the arm.
- It hugs right to the furrow.
- The hitch is directly to the beams.
- Convenience in opening furrows.

In this last respect the Triumph is remarkably complete, and no other gang begins to be so conveniently constructed. The furrows can be opened either angled or flat, as desired, and shallow or deep. The first furrows can be made any depth that the plow can turn, clear to the extreme limit.

The Hoover Digger



The Facts About the Construction

THE TWENTIETH-CENTURY DIGGER

The Hoover Digger is the only one that successfully separates the potatoes from the vines and other foul matter, the potatoes being delivered behind the machine, in a narrow row, on clean ground, while the vines are carried to the left side, the upper set of rods doing this work, with the aid of the constantly moving forks. Growers should give this improvement great weight in buying a digger. If you want a machine that will run everything, grass, vines, weeds and potatoes over together, like straw over the top of a straw carrier, don't get the Hoover.

HOW IT IS DONE

It will be noticed by the cut that the power is taken by the drive chain from the large sprocket wheel on either side and immediately transmitted to the shaft at the upper end of the elevator; this in turn sets the back rack in motion, also the forks.

THE LEVERS

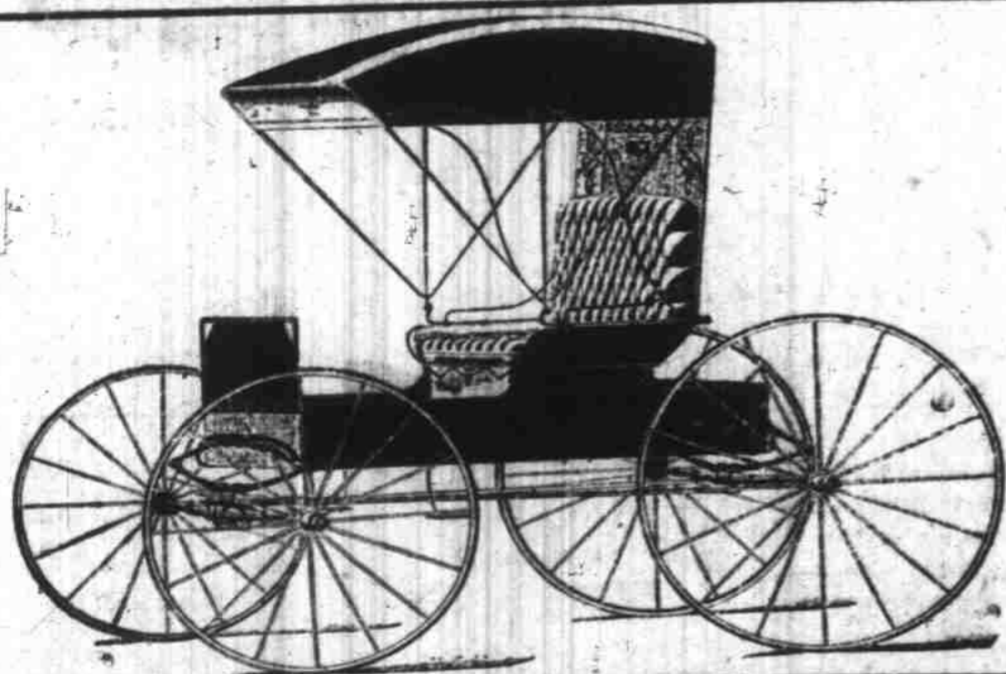
The forward lever so convenient to the driver, regulates the depth, which is easily done while the machine is in motion, while the side lever regulates the position of the back rack.

OUR SHOVEL

Is of special design and composition, which we unhesitatingly guarantee against stumps and stones. We have a special hinged shovel for stony land. The Improved Hoover costs a little more than some others. An examination will show you why.

HOW ABOUT THE DRAFT?

We are sometimes asked: "How many horses are required to handle your digger?" and we answer, "Two," though the conditions of the ground and the depth necessary to dig are important factors in determining this. We guarantee the digger against four horses; if that many are necessary, put them abreast. This is done where from five to eight acres are dug in a day. The machine is furnished with complete four-horse double and single trees.



Introductory Remarks

The MITCHELL WAGON being the king pin of our vehicle lines, in fact of all our lines and being of the highest possible standard, it is but natural we should strive to surround it with goods of merit, and while some of the lines of vehicles shown here are lower priced than others we aim to put all the value possible in each article consistent with the price at which we offer the same. We are large buyers, hence can dictate somewhat to the manufacturers, and get goods made right for the "Northwest" trade. It also enables us to buy closer than some others, and the large volume of business handled by us enables us to handle each line on a smaller margin of profit than those whose trade is not so far-reaching. Therefore, we feel justified in saying that we give more value for the money than can be had elsewhere. It is not our aim to sell cheap goods, but to have each article of quality consistent with the duty to be performed and get the price as low as possible and leave us a reasonable margin for doing business.

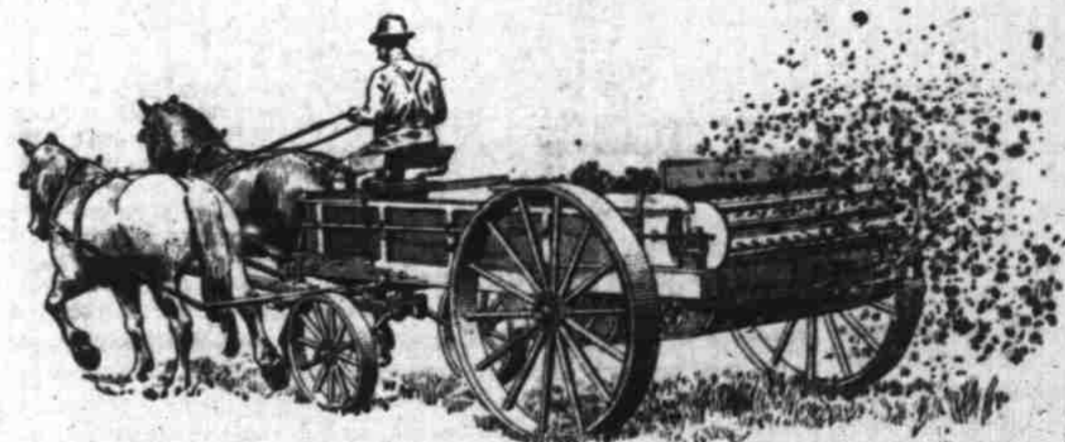
WE RECOMMEND OUR "BEE" LINE

For those who want a good, serviceable vehicle at a moderate price. There is a growing demand for moderate priced vehicles built to give satisfaction. This line fills the want to a nicety, because it is built with a full knowledge of the conditions and requirements of the Northwest Trade. Beginning with 1901, we added the body corner iron, which has always been a feature on our Buggy lines.

OUR "MITCHELL-HENNEY" BUGGIES.

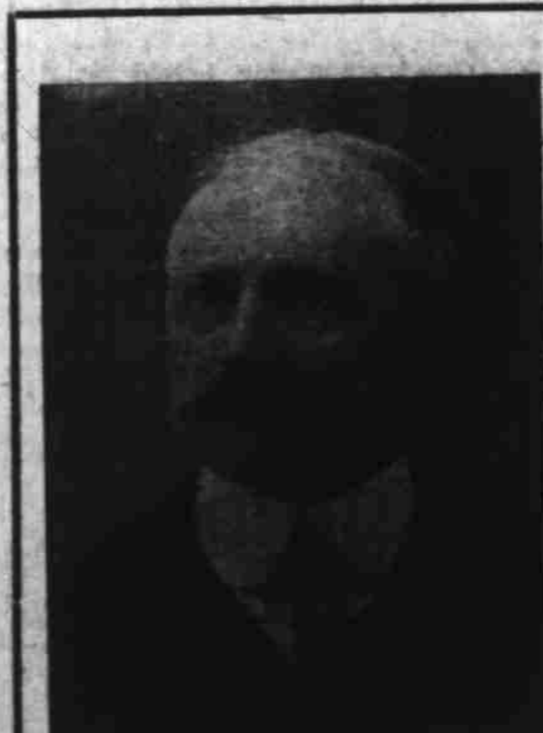
Are now on the market for the fifth year and have been sold largely to Liverymen, Doctors, Stockmen and others who keep a buggy going and give it lots of "hard knocks." HENNEY BUGGIES in themselves are well and favorably known, having been sold here for years past. The MITCHELL-HENNEY buggies, however, are built especially for us, we stipulating the grade and size of every piece of material in them, as well as the style of construction. "A BETTER BUGGY FOR THE MONEY CANNOT BE BOUGHT" is the verdict of every Liveryman who has used them.

"BABCOCKS" AND "MOYERS" IN STOCK.

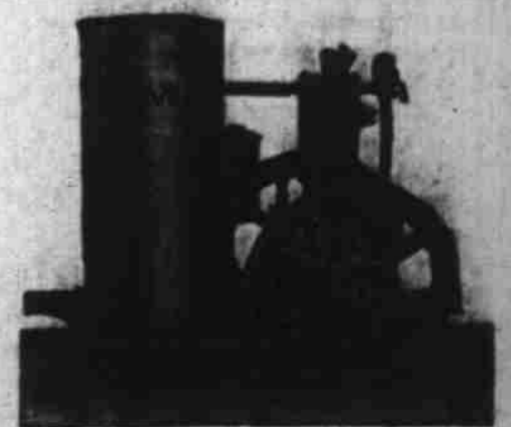


We are agents for the KEMP MANURE SPREADER.
Prices furnished on application.

The Stover...



F. F. CAREY, Manager.



I am a self contained Gasoline Engine, and not confined to any one place. If it is not convenient for you to bring your work to me, can I go with you and put in as long a day's work as you wish me to.

You ask if I have a trade? I certainly have; when I am on the farm I saw wood, grind feed, shell corn, churn butter, pump water, etc. -- and when in town I run printing presses, ice cream freezers, ventilating fans, dynamos, elevators, coffee mills, and have many other jobs. Now I want a place and am willing to work cheap.

Write for prices and terms.

Mitchell, Lewis & Staver Co.

Portland, Seattle, Spokane and Boise.