

# Our City Government - Who's In Charge Here

## An Open Letter to Nyssa Citizens

### Greetings:

This is the first of a series of articles on City Government, operation, planning and land use designed to better inform our citizens and to encourage citizen involvement through the use of news and radio media as well as periodic "Town Hall" meetings to solicit citizen participation.

This first article has been adapted from an International City Management Association article by our City Manager, to provide information about our form of government.

I welcome and encourage your response and participation in the open forum meetings being planned for a later date.

/s/ Donald L. Oldemeyer  
Mayor

## Our City Government Who's In Charge Here?

by Henry Schneider

From time to time, Nyssa citizens undoubtedly ask themselves several basic questions: Who really runs this community? What does the Council do? What does the Mayor do? What does the Manager do? What's the difference in all these jobs? How do they relate to each other? And most of all, who's in charge here?

As the City Manager of your community, I can answer two of those questions for myself immediately. The manager does not run the community, and the manager is not in charge here.

The City Government operates under the Council-Manager Plan, and it can be said with complete honesty and objectivity that it's a good form of government. The Council-Manager Plan is the system of local government which combines the strong political leadership of elected officials in the form of the City Council with the strong managerial experience of an appointed City Manager.

Because the citizens of our community had the wisdom and foresight to vote to operate their city government under the Council-Manager Plan, we now have the form of local government which puts the power where it belongs—in the hands of the voters. They are in charge here.

The voters elect our City Council, and the Council hires a manager who does not

serve for any specific period of time. City Managers serve at the pleasure of the council, the people who are elected by the voters. Thus, in a real way, the manager must be responsive to the wishes of the citizens as defined by the officials elected by the citizens.

The City Council is our Community's Legislative Body. It sets policy. It approves the budget. It determines the tax rate. It also hires the Manager and supervises his performance. My job, as it differs from the Council's is to prepare a recommended budget for the Council to act on, to serve as the Council's Chief Advisor, to recruit and hire the best people to work for our government—and to see to it that the Council's programs are carried out.

This means that Council members are the Community's decision makers, the ones with the power entrusted to them by the top of the power structure—the voters. The Manager is hired to serve the Council as its full-time executive. My job is to bring to the community the benefits of my years of training and experience in administering a local government's staff, its projects, and its programs on behalf of the Council.

As far as policy matters are concerned, I may make recommendations to the Council, which the Council may or may not adopt or may change or modify them. In any event, as Manager I am bound by whatever action the Council takes.

Almost all communities operating under the Council-Manager form of government have a Mayor who is a leader in developing community policies. He works with the Council to form these policies represents the city at official functions, appoints advisory committees, coordinates their work, and maintains contact with other governmental agencies and civic groups.

That's how we operate under the Council-Manager form of government. A few words are appropriate here as to why we operate under this system. This method is intended to provide the greatest amount of control by the people as possible. The voters elect the Council to govern their community, and the city manager is chosen by the Council to carry out the Council's programs.

The Council-Manager plan is also intended to provide the maximum amount of participation by the citizens of the community.

In addition, unlimited additional citizen participation is possible through whatever citizen groups or other channels of grass-roots communication the elected officials wish to establish.

Another major advantage of our city's form of government is it minimizes the danger of machine politics by placing so much emphasis on the role of the elected officials and by coupling that in a unique way with the performance of a professional career administrator.

The arrangement is the same as you find in many businesses, universities, hospitals, and other organizations where a Board of Directors sets the policies and employs a full-time executive to run the day-to-day activities.

The Council-Manager form of government which voters chose for our city is also used in 2,400 other communities of every size and description.

An average of 75 more American communities adopt this form of local government every year and some 50 million Americans live in communities governed by the Council-Manager plan.

There are other forms of government, but none vesting as much power in the people through their elected representatives, while at the same time providing a trained public administrator as the staff head. Through the elected Council members we know what the citizens want. Through an appointed Manager, we have the administrative mechanism to achieve the goals set forth by the people of our community.

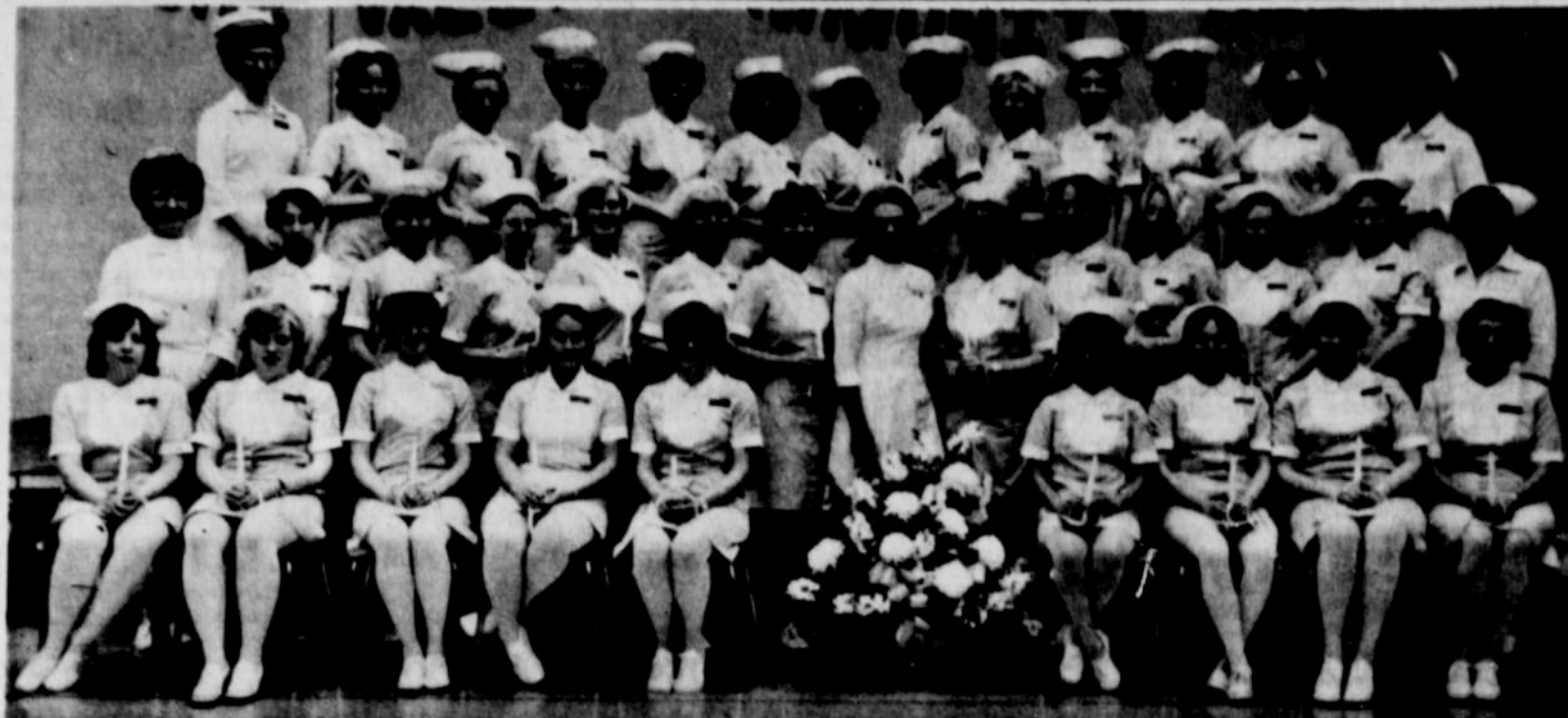
Questions pertaining to the general operation of the City as well as complaints concerning city services should be referred to the City Manager's Office. Remember, he has the responsibility for the overall operation of City facilities and services.

Contact him first, rather than a Council Member, if you have such a complaint. Then if you feel you are not getting satisfaction, refer the matter to a Council Member, who will followup on your complaint.

If you have any ideas, additions or changes to City Policy you would like enacted, contact your Council Members, as they are responsible for policy.

**The Nyssa City Government wants to be responsive to the majority of the people.**

## Journal Classifieds Bring Results!



**THIRTY-TWO PRACTICAL** nursing students at Treasure Valley Community College received their caps at ceremonies January 16. Front row: Autumn Humphries, Anna Smith, Cindy Wimpy, Pam Craig, Maloa Caviness, Chris Butac, Sharon Bowmer, Carol Brown, Barbar Huiton. Middle row: Instructor Jean Joyce, Shelly Munn, Cindy Dentel, Sally Gugler, Cindy Haynes, Dolores Grove, Val Johnson, Nursing Department Chairman Connie McClun, Linda Myers, Sally Newman.

Jody Cunningham, Julie Findling, Shari Cornell, Instructor Elaine Balderson. Back row: Instructor Connie Colvin, Kathy Colvin, Camie Smith, Dolores Carico, Carol Watts, Meria Rodrigus, Star Savage, Arlene McWilliams, Rawna Hadfield, Mary Higgins, Wennette Potett, Lenelle Givens, Instructor Ruth Buchtel. Student Shirley Wright was not pictured.

# The Metric System Nyssa Garbage Cans Are In the Red

By Adriana Kunkel

Finally, after years of debating, U.S. will soon no longer be one of only five nations that measures length in yards instead of meters, weight in pounds instead of kilograms, and volume in quarts instead of liters. President Ford over the holidays signed bills that will create a National Metric Board.

Bottles of 7 UP are already being sold by the liter. Highway signs in fourteen states list distances in both miles and kilometers. The new Chevette boasts a 1.4-liter engine. IBM has said it will not make any new products after 1978 that does not conform to the metric system. Schools in over half of the 50 states have plans in the making to teach exclusively the metric system in the future. Detroit's auto industry is expected to convert by 1982. At that time odometers will measure their distances in kilometers rather than in miles. School officials and businesses will soon have to order their paper and filing cabinets in metric measurements.

And the best way to get acquainted with the metric system is to work with it. All you need for this weeks exercise is a ten-cent ruler that has both the metric and English linear units marked on it, and a sheet of paper. You'll be work'g with a fraction of a meter: the Centimeter. The Centimeter

- (which is .39 inch long) is only one-hundredth of a meter (like a cent is one-hundredth of a dollar).
- 1. Draw a frame that is 12 centimeters (cms) wide and 15 cms tall. Label the corners (starting clockwise at the upper left): A, B, C, and D.
- 2. On line-segment AB, 6 cm from A, place a dot and label it E.
- 3. On line-segment BC, 8 cm from B, place a dot and label it F. Draw line-segment EF.
- 4. On line segment AD, 8 cm from A, place a dot and label it G. Draw line-segment EG.
- 5. Draw line-segment GF.
- 6. On line-segment GF, 1 cm from F, place a dot and label it H.
- 7. On line-segment GF, 1 cm from G, place a dot and label it I.
- 8. On line-segment CD, 1 cm from C, place a dot and label it J. Draw line-segment HJ.
- 9. On line-segment CD, 1 cm from D, place a dot and label it K. Draw line-segment IK.



The greatest consumers of refined sugar are the people of Iceland, with an average of 5.29 ounces a day!

Some Nyssa garbage cans are wearing adornments these days in the form of red tags issued by the city police. Red tags, according to City Manager Henry Schneider, signify that the garbage can in some way violates the standards set forth in the new city garbage ordinance. Each tag will specify to the garbage collection subscriber the nature of the ordinance violation. The subscriber will have 48 hours in which to comply with the ordinance provisions; the alternative will be a citation issued by the police department. Types of noncompliance with the ordinance include use of cans larger than the maximum 32-gallon capacity size, use of cans without tight-fitting lids and use of fatigued cans (dented or perforated).

The city's rules do not make allowance for use of the 55-gallon barrel or drum as a garbage can. These and incinerators may be used for burning of nonputrescibles but they should be located at a prudent distance from the garbage cans, Schneider said, so that confusing situations don't wind up with garbage being tossed in the burn barrel.

Besides putrescible matter burning being disallowed, matter which would produce noxious smoke (such as rubber tires, chemicals, etc) must not be burned in the city.

Permits are not required for barrel or incinerator burning but are needed for open burning such as for weed removal.

# Highway User Funds Distributed To Cities

During the period July 1 to December 31, 1975, the State Highway Division has distributed \$9,906,467.65 in highway-user tax funds to the incorporated cities of Oregon whose combined population now totals 1,320,323.

The funds come from the following sources: motor vehicle registration and operators' license fees, gasoline tax, use fuel tax, motor carrier fees, and fines and penalties collected for violations of the size and weight statutes where complaints were made by the highway Division weighmasters.

The apportionment is based on the population of each city as determined by the Center for Population Research and Census, Portland State University. The population figures are as of December 31, 1975. It should be noted that because of fluctuation in population figures during the reporting period, the exact amount received by some cities may vary slightly from the figure shown.

The City of Nyssa received \$20,520.88 based on a population of 2,735.

## My Neighbors



### MYSTERY MERCHANT WINNER

**MARY ELLEN FRAHM**, Route 1, Ontario, second grade teacher at Nyssa schools was the lucky winner of the Mystery Merchant Contest this week. Arleigh Adams, of Newhouse Chevrolet, Inc. (formerly Johansson Adams Motors, Inc.) presented Miss Frahm with a check for \$52 Monday. The Mystery Merchant this week was Ernie Metcalf of Nyssa Co-op Supply and there were 14 clues. Out of 275 entries, 110 had the correct answers. Prize money will again start at \$24 and the box will be at Stout Appliance until 4 p.m. Monday. Remember, you can't win if you don't enter. **NOTE—JOY ADAMS** was last week's Mystery Merchant. Her name was inadvertently left out.

# Can You Guess Our "Mystery Merchant" for \$24<sup>00</sup>?

### WHERE TO LOOK FOR CLUES

Clues may be hidden in ANY AD IN THIS SECTION. When a star appears in any of these ads, it means that additional advertising of that firm appears elsewhere in this issue of the paper and additional clues may also be hidden in any of those ads as well.

Clues will be scattered...there may be from one to five in any ad - or none. This is a contest of skills - and we intend to do our best to outwit you. We invite you to do your best to outwit us!

### CONTEST RULES

1. This is a family fun contest! One entry per person (family of four could submit four entries.) Anyone may enter UNLESS a member of your family is employed by the Gate City Journal or by the merchant whose ad is heavily bordered in this section. (This applies ONLY during the week this ad is bordered.) Employees of other sponsoring merchants ARE eligible.

2. Nothing to buy - use any slip of paper for entry blank. Not necessary to be present to win. Not necessary to be a subscriber to the Gate City Journal to enter.

3. WHO'S WHO may be anyone in the Nyssa area. Clues for his or her identity will be hidden ONLY in ads for sponsoring merchants (see "Where to look for Clues" above.) If by coincidence, the name of the WHO'S WHO (or other facts about him or her) happens to appear in news items, editorial matter or other places in this newspaper, these will not count as clues in this contest.

4. To enter, write down the name you think WHO'S WHO is. Add the total number of clues you can find in ALL the ads of sponsoring merchants in this issue. You do not have to list all these clues - just give the total number of them. Don't forget to add your name and address. Then, drop your entry in the box located at the sponsoring merchant, whose ad is bordered in this section of this issue.

5. There is no other place where entries will be accepted. Any member of the family may bring in all the entries for that family. Children under 12 must be accompanied by an adult.

6. This week's contest starts when you receive this issue and closes at 4 p.m. Monday of the following week.

7. At that time (4 p.m. next Monday) a drawing will be held at the store where entries have been received for this week's contest. The first entry drawn that correctly identifies WHO'S WHO will win \$10. If THAT entry also lists the correct total number of clues hidden in all ads of sponsoring merchants, a BONUS OF \$14.00 will be paid. Whenever this BONUS is not won, it will be added to next week's BONUS - which will continue to grow until it is won!

8. Every possible precaution will be taken to prevent typographical errors that might be mistaken for clues, but errorless typography CANNOT BE GUARANTEED (by anyone). The publisher of the Gate City Journal will judge in all questions and his decision is final. Family participation gives you a better chance to win the jackpot...your wife, husband or youngster MAY spot a clue that you miss!

Remember, you can't win if you don't enter!

<b>Gambles</b> CHARGE IT	<b>Owyhee Beauty Salon</b> * Bleaches * Permanents * Tints Men's cutting & styling Specializing in latest blower cuts and iron curling. 214 Main St. 372-3531	<b>Wilson Bros. Dept. Store</b> New Pall-Parrot Shoes 118 Main St. 372-3563	<b>Steer-Inn Drive In</b> Try our Taco Burgers & Taco Dogs To warm you on these cold days To warm you on these cold days 117 N. Main St. 372-3363	<b>STUNZ LUMBER CO.</b> Complete Building Supplies Gutter Paint Plumbing & Electrical Supplies 707 Adrian Blvd. 372-2237	<b>Nyssa Rexall Drug</b> VISIT Our complete Hallmark Section. 129 Main St. 372-3551	<b>4 RAYS FOOD FAIR</b> ★ 602 Main St. 372-3344	<b>Rieb's Foodland</b> ★ FRUSTRATED??? at high food prices and low quality? Then see us first and save! 204 Good Ave. 372-2131
<b>Twilight Cafe</b> 40 YEARS of experience, fine food and reasonable prices. 212 Main St. 372-3388	<b>Owyhee TRUCK IMPLEMENT CO.</b> 401 Main St. 372-2226	<b>NEWHOUSE CHEVROLET</b> ★ 420 Main St. 372-2224	<b>CELEX</b> Nyssa Co-op Supply 18 N. 2nd Nyssa, Oregon 372-2284	<b>Nyssa Electric</b> ELECTRICAL SERVICES * Motor Winding * Motor Repair Commercial-Residential-Industrial McCullough Chain Saws 101 Good Ave. 372-3151	<b>ROW'S SHELL SERVICE</b> ★ Drive-Inning Tune-ups Shell Refinishing Ballast Repairs 101 N. Main 372-3004	<b>Brownie's Cafe &amp; Lounge</b> EAT OUT Local-Friendly-Service Fine Foods - Beverages 113 Main St. 372-3492	<b>B &amp; M Equipment Co.</b> Up To 30% Discount On Lawn & Garden Tools 1100 Adrian Blvd. 372-2299
<b>Michael's Pharmacy</b> PHONE 372-3147 202 MAIN NYSSA, OREG.	<b>Paulus Jewelry</b> SURPRISE her with a Lady Setko Watch and Jewelry Work is our Specialty 127 Main St. 372-2916	<b>M&amp;W MARKET</b> ★ The Finest Meat STORE IN TOWN 424 Main St. 372-3916	<b>Small Fry Cafe</b> WE ALL START somewhere. We may be small but we try to please with local friendly home-cooked meals at prices you can afford. Adrian Blvd.	<b>STOUT APPLIANCE</b> Hotpoint Quasar 8 N 3rd St. 372-3198	<b>Roggedy Ann's Pad</b> We now have "Mann Brand" pants and shirts Size 2 to 4 years Born Kadoka, S.D. 109 Main St. 372-3703	<b>Fangen FLORAL &amp; GREENHOUSE</b> 372-3437	<b>Kassman Chevron</b> TUNE-UP SPECIALIST Before you go elsewhere see us for expert tune-up service! 301 Main St. 372-2964