

97th Birthday Anniversary



Samuel Gilbert Tuning celebrated his 97 birthday anniversary Friday, October 12. He is a resident of Malheur Memorial Nursing Home. A birthday cake was served to the honoree and residents at the nursing home at lunchtime.

Mr. Tuning was born, October 12, 1876, at Highland County, McDowell, Virginia. At the age of seven, his family moved to Illinois, settling in the Bloomington area, where he attended school, grew to manhood and married. In 1902, under the sponsorship of E. M. Kirkpatrick, he came to Parma to manage the holdings of Kirkpatrick and Hurtt, families who owned many acres of land on the Roswell bench. He managed their interests until 1919 when he purchased his own farm land, which he actively farmed until about 1949, at which time he retired from farming and turned his holding over to his son, who has since managed them. However, he continued to live in the family home until circumstances forced him to move to a nursing home in 1970.

During his active years, he contributed to the growth and development of the Parma and Roswell areas by participation in the formation of the first telephone company in Parma and was instrumental in having the service extended to Roswell; by serving as one of the early presidents of Parma's first bank, The First National Bank of Parma, and for several terms as director of the Riverside Irrigation District. Some of his other activities, too numerous to mention, included the use of his time, money and effort toward the improvements of the Roswell school, the church and the cemetery. Additionally, he was a willing and faithful worker in the Republican Party.

GI Benefits Help on High School Certificates

High school dropouts who de-rote through military service route to college have a GI Bill benefit that wasn't available to their fathers after World War II. And they are using it in record numbers.

In addition to the 36-months of college assistance Vietnam veterans earn with as little as 18 months service, they can receive GI Bill payments for the additional months that might be necessary to complete high school or take additional courses needed to meet college entrance requirements. These additional "free entitlement" months can be used without depleting the basic 36-months eligibility needed for four college years.

During fiscal year 1973, there were 129,980 veterans and servicemen, who had used free entitlement, enrolled in college. This is almost double the number enrolled during the previous year.

To date, 195,653 veterans and servicemen have used the benefit, and nearly 70 percent were still in training during the last fiscal year.

Administrator of Veterans Affairs Donald E. Johnson attributes part of the success

of the program to the intensive "outreach" program launched in 1969 to encourage veterans to take advantage of their benefits. The program, which focuses on the socially and economically disadvantaged veteran, utilizes predischARGE counseling, follow-up letters to home addresses, telephone calls and personal visits.

BUILDING PERMITS

Carl Roth, 706 N. 3rd St., remodeling, \$1000; Walter Looney, 525 N. 5th St., enclosing basement entrance, \$75; Methodist Church, 333 Emison Avenue, new siding, \$1500; Prudencio Escobedo, 120 E. 2nd St., carport, \$600; Jesus Mendendez, 609 N. 6th St., self-help housing, \$13,000; Rangelio Romas, 605 N. 6th St., self-help housing, \$13,000; David Parra, 201 N. 9th St., adding room \$800.

Oregon's Inspection Water Level Cited Of Meat Retail

Oregon's approach to meat inspection is being watched by many other states, according to State Director of Agriculture Irvin Mann, Jr. The director told members of the department's Consumer Advisory Council in a meeting with them in Salem, October 16 that he had had many inquiries about the success of the state's retail meat inspection at the recent annual meeting of the National Association of State Departments of Agriculture in Portland, Maine.

Mann said he thinks retail meat inspection with the use of a sampling program and the standard plate count to determine the bacteria level of the meat is the wave of the future in meat inspection.

He said several with whom he visited at NASDA had indicated they were interested in taking the same approach to meat inspection that Oregon did after it turned inspections at slaughter and processing plants over to the federal government. Inspections at the retail level were implemented because the department felt this approach offered the consumer greater assurance of an uncontaminated meat product at time of purchase.

Earlier in the meeting the council discussed possible revisions in the state's meat inspection regulations, directed at giving the consumer greater protection.

The council was also brought up to date by Dr. Jane Wyatt, consumer officer, on progress made in preparing regulations to implement the open dating law passed by the 1973 Legislature.

In a review of qualifications for representation on the Consumer Advisory Council, members of which are selected by the organizations they represent, the council decided to continue to limit membership to statewide organizations with a consumer interest as part of their program. Members of the council also voted to ask the Oregon Nutritional Council to select a representative to the council.

SECOG Meeting Next Wednesday

The Southeast Council of Governments (SECOG) will meet next Wednesday, October 31 at 8 p.m. in the council chambers of the Vale City Hall.

Main item of business will be highway improvement priority projects. Other items on the agenda will be work programs, by-laws, manpower planning system, adoption of water and sewer plans, ancillary manpower planning board programs and projects, and HUD 701 city and county priority projects.

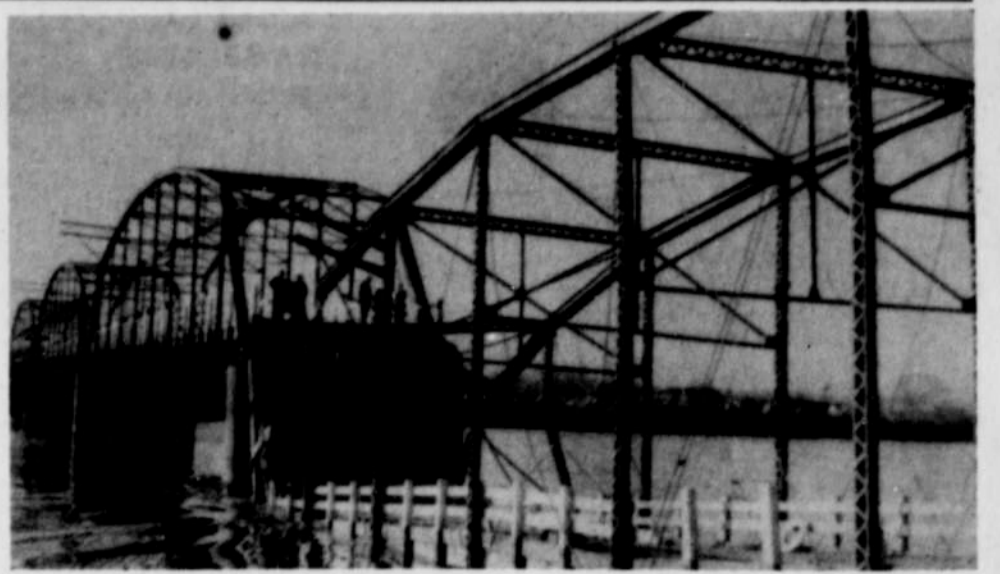
FIFTH GRADERS TAKE FIELD TRIP

Miss McPike's and Mrs. Spitzer's fifth grade class went on a field trip on October 9, 1973.

First we went to the Argus Observer. We saw how the blank paper rolled through the machines and came out printed with news. Then we saw how the ads and funnies were put in. We saw many hard workers.

Then we went to the Payette Park to study trees. There were many kinds of different trees. We did a task sheet. We also saw the elk, statue of the soldier, and cannon monuments.

Our field trip was very interesting. Janie Vielma Fifth Grade.



THE OLD NYSSA BRIDGE is shown in this picture taken by Dick Forbess, with one span of the bridge in the Snake River as the result of a truck accident on December 4, 1954. One of the three remaining spans shown met a similar fate as it fell into the Owyhee River last week in an almost identical accident.

Old issues of The Journal reveal that a temporary span was completed and opened on Sunday, December 12, 1954 connecting

the three remaining spans to the Idaho shore, and the bridge continued in use until the present bridge was built.

Ski Swap Sale Slated in Nov.

A Ski Swap Sale sponsored by the Caldwell Memorial Hospital will be held at Kaley Medical Center, 10th and Logan, Caldwell. Dates for the sale are as follows:

November 3 - 9 a.m. to 7 p.m. Proceeds of the sale will be used to buy an emergi-cart, which is a unit containing emergency equipment and oxygen. The cart travels with a patient being transferred from a down parka, ski poles, gloves, goggles, children's skis, boot ther.

YOU'RE IN FOR A TREAT WITH THIS

# HALLOWEEN FOOD SALE

**CLOVER FARM**

KRAFT MINIATURE MARSHMALLOWS

10 1/2 OZ. PKG. **21¢** PKG.

U.S.D.A. CHOICE BLADE-CUT CLOVER FARM TRIM CHUCK ROAST... **77¢** LB.

GROUND BEEF FRESH LEAN **89¢** LB.

CHUCK STEAK U.S.D.A. CHOICE **87¢** LB.

BAR-B-Q STEAK ROUND BONE **1.09** LB.

BEEF STEW MEAT BONE-LESS **1.19** LB.

LEAN-MEATY SPARERIBS EXTRA TASTY MEAT... **83¢** LB.

GOLDEN-RIPE EXTRA FANCY BANANAS **8** LBS. / \$ **1.00**

"SWEET" EXTRA TASTY "FARM" YAMS FRESH NOW... **29¢** LB.

POPCORN BALLS **12 1/2** \$ **1.00**

1 GALLON APPLE CIDER **\$1.29**

JOY 22 oz. LIQUID DETERGENT **43¢** W/O COUPON... 59¢

NABISCO 15 oz. OREO SANDWICH **2/99¢**

KLEENEX ASSORTED TOWELS JUMBO ROLL **33¢**

STEINFELDS 32 oz. GLASS JAR KRAUT **39¢**

SCHICK ADJUSTABLE INJECTOR RAZOR **\$2.49** **1.99** VALUE

HANDY ANDY GLOVES **69¢** REG. 83¢

WE HAVE A COMPLETE SELECTION OF HALLOWEEN CANDIES AND NOVELTIES SO COME IN & SAVE!!

6 PAK PACKAGE EXTRA TASTY SIDEWALK SUNDAE **53¢**

BANQUET 8 oz. MEAT PIES TURKEY, CHICKEN, BEEF, TUNA EACH **25¢**

NATURIFE - FROZEN STRAWBERRIES 10 oz. PKG. **33¢**

KRAFT 8 oz. JAR 1000 ISLAND DRESSING **39¢**

GOLDEN GRIDDLE 24 oz. MAPLE SYRUP NOW... **69¢**

KRAFT ASSORTED CAMEL'S 14 oz. PKG. **49¢**

HALLOWEEN YUMMIES for LITTLE TUMMIES

NESTLES QUIK 2 LB. CTN. **89¢**

CLOVER FARM 3 MINUTE 2 LB. PKG. POPCORN **25¢** PKG.

PRICES EFFECTIVE OCT. 25, 26, 27 TH.

**DOUBLE !! GOLD STRIKE STAMPS... ON ALL PURCHASES MON. TUES. WED.**

Helping Western Families Live Better

WE GIVE GOLD STRIKE STAMPS EVERY DAY

## RIEB'S CLOVER FARM

NYSSA, OREGON

## Hurry for your Green Stamps

Now through October 31st, you can get valuable S&H Green Stamps at Equitable Savings for opening a new account or adding to your present one. That's two Green Stamps per dollar for a deposit up to \$1250. 2500 stamps for a deposit between \$1250 & \$5000. 5000 stamps for over \$5000.

All this in addition to the super earnings you get on our 5 1/4% passbook savings and the high 7% interest you receive on four-year, \$1000 certificates of deposit (current annual rates).

Drop into any one of the 36 convenient branches this month and ask the people at Equitable how you can cash in on your savings!

**Equitable Savings is people.**

1094 Southwest Fourth Avenue Ontario 889-9671