

THE SUNS of Nyssa are leaders in the Treasure Valley Community College's summer basketball competition. The team is 7 and 1 for the season, and Monday evening, July 23, defeated the Bullets of Vale, 49 to 68. Standing left-Kent Blanch, Bob Morostica, Jeff Marquez and Mark Marquez. Kneeling left-Roy Mosquedo, Philip Klinsenberg and Tom Murders.

4-H Horse Judging At Rodeo Grounds

The Malheur County 4-H Horse Judging Contest will be held Wednesday, August 1 at the Nyssa Rodeo Grounds. This program will begin at 9:00 a.m. according to Ron Mobley, Malheur County 4-H Youth Agent.

Oregon Veteran Loans Increase

Oregon veterans' farm and home loans went to 8,836 veterans in 1972-73 in the amount of \$164,727,632 for the highest fiscal year on record. H. C. Saalfeld, Department of Veterans' Affairs director, reported today.

This was a 6 percent increase in loans and a 10 percent boost in dollar volume over the previous record year, 1971-72. Loans last year averaged 736 per month for \$13.7 million, compared with the 1971-72 average of 690 loans a month for \$12 million.

In Malheur County last year, loans were granted to 56 veterans in the amount of \$1,281,664, compared with 71 loans in 1971-72 for \$1,758,600.

Since the loan program started in 1945, loans have gone to 952 veterans in this county in the amount of \$12,549,614. Statewide, 100,084 loans have been granted for \$1,226,196,223. The loan program is self supporting and during its 28 years of operation it has earned a net operating revenue of \$25,560,191.

WEATHER PLAYS MAJOR ROLE IN 1973 FARM OUTLOOK

Accelerated economic activity early in 1973, coupled with adverse weather conditions in the United States and various parts of the world in both 1972 and 1973, are playing major roles in current and prospective price trends for farm products. This is the situation as seen by Stephen C. Marks, Oregon State University Extension economist, in the new issue of the Oregon Farm and Market Outlook circular, published by the OSU Extension Service.

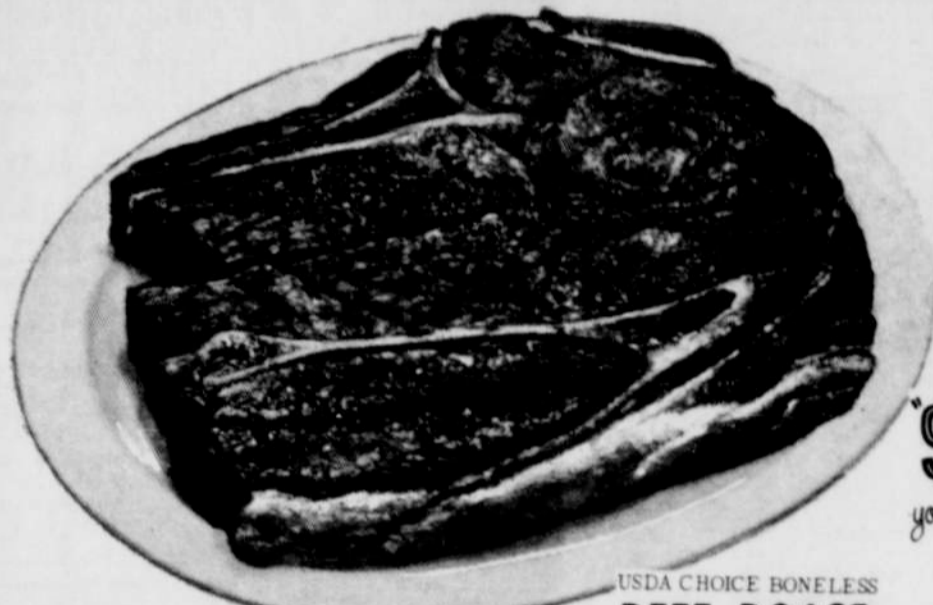
While prices of many farm products soared to all-time highs earlier this year, farm production costs rose almost as spectacularly, the economist notes. These events signal mixed blessings and uncertainty to the nation's food producers. Farmers whose production equals or exceeds 1972 levels should realize increased 1973 gross and net incomes. Those who have losses due to weather and a lack of fuel are likely to see their income drop or improve very little, he adds. Weather conditions between now and harvest, and the availability of fuel, will be important determinants in the ultimate marketable crop ton-

nage from this year's production, Marks stresses. In the Pacific Northwest, it appears drought will hold down yields in the major grain and hay growing areas and in other areas where irrigation water is short. Nationally, rain-soaked and flooded lands, particularly in the Midwest, will limit the output of grains and their availability for livestock and poultry feed, Marks believes. Delays in planting and deliveries of gasoline and fertilizer, coupled with shortages of certain grain seeds for planting, will have an influence on the avail-

Veterans Administration To Provide Office on Wheels

A red, white and blue Veterans Administration "office on wheels" will begin touring Oregon this month bringing government to the people.

"Concern for rural and urban area veterans who may not be making full use of their veterans benefits is the basic idea behind the VA mobile van that will be visiting veterans in their home communities," said Henry G. Helmstetter, assistant director of the VA regional office in Portland. The 27-foot van, housing specialists in veterans benefits, will be officially dedicated at 2 p.m., Friday, July 20, at the County Courthouse in Corvallis. The governor, state congressional leaders, and other elected officials have been invited to the ceremony. The principal address will be given by Congressman Wendell Wyatt. Tuesday the van will begin touring some 26 communities throughout the state, with its only stop in Malheur County at Ontario on Thursday, August 9.



CHUCK STEAK **89¢** lb.

USDA CHOICE

ARMOUR'S WHOLE BONELESS HAM lb. \$1.29
 ARMOUR'S HALF BONELESS HAM lb. \$1.39
 USDA CHOICE 7-BONE BEEF ROAST lb. 98¢

USDA CHOICE BONELESS BEEF ROAST lb. \$1.29
 ARMOUR'S 12 oz. LUNCH MEAT 89¢
 FRESH FROZEN TURBOT FILLETS lb. 79¢
 HORMEL VALU SLICED BACON lb. 89¢

USDA CHOICE LOIN LAMB CHOPS lb. \$1.89
 LAMB USDA CHOICE BLADE CUT SHOULDER STEAKS lb. \$1.19
 USDA CHOICE LAMB STEW MEAT lb. 59¢
 SHARP CHEDDAR CHEESE lb. 98¢

WE HAVE A GOOD SELECTION OF IMPORTED CHEESE

BEAT THE HEAT WITH FROZEN FOOD

SLIM JIM HASH BROWN POTATOES 2-lb. 4/\$1
 EVERFRESH CORN OR PEAS 10 oz. 8/\$1
 MEADOW GOLD ICE CREAM GAL. BUCKET \$1.39
 WESTERN FAMILY TOPPING QUART 39¢
 KERN'S 10 oz. STRAWBERRIES 3/89¢
 SARA LEE 13 1/2 oz. CAKE CHOC. OR BANANA 79¢
 GENO'S COMBINATION PIZZA 16 oz. 79¢
 RHODES BREAD 5-PACK 79¢
 AUNT JEMIMA WAFFLES 9 oz. 39¢
 FISHER BOY FISH STICKS 8 oz. 3/\$1
 VAN DE CAMP FISH FILLETS 14 oz. 89¢
 "WHOLE SUN 16 oz. ORANGE JUICE 2/99¢
 WESTERN FAMILY LEMONADE 6 oz. 14/\$1
 BRILLIANT COOKED SHRIMP 8 oz. 89¢
 MRS. SMITH'S 8 in. FANCY PIES CHOC. OR COCONUT 59¢
 MINUTE MAID 12 oz. GRAPEFRUIT JUICE 2/\$1

MEADOW GOLD FRUIT DRINKS GALLON 49¢

HOME DAIRIES YOGURT 8 oz. 5/\$1.00

KERNS TOMATO SAUCE 8 oz. CANS 12/\$1.00

Food Dollars Go Further Here!

EDDY'S FRENCH BREAD 16 oz. 3/\$1
 ONE LAYER CAKES ASSORTED 15 oz. 49¢
 BLUE DELL PEARS 29 oz. 2/89¢
 WESTERN FAMILY APPLESAUCE 29 oz. 3/\$1
 "ALL" DETERGENT 20-lb. \$3.99
 M.C.P. PECTIN 2 oz. 6/\$1
 TIDE DETERGENT 49 oz. 79¢

COUPON

GOLD MEDAL W/COUPON FLOUR \$1.19
 10-lb. BAG
 W/O COUPON \$1.39
 EXPIRES 7/28/73
 GOOD ONLY AT M&W NYSSA

DEBONAIRE STONWARE SPECIAL OF THE WEEK CUPS 49¢ WITH \$300 PURCHASE

Prices Effective Thursday-Friday-Saturday

M&W MARKETS

High Quality - Low Prices - plus

NYSSA . . . OREGON

GRAIN

For Your Best Deal Bring Your Small Grains . . . to . . .

FARMERS FEED & SEED

Wheat, Barley, Oats and Mixed Grains

FARMERS Feed & Seed Co.

117 Good Avenue NYSSA Phone 372-2201

WATERMELON

6¢ lb.

MUSHROOMS lb. 79¢
 CANTALOUPE EA. 39¢
 BROCCOLI lb. 19¢
 CUCUMBERS AND GREEN PEPPERS EA. 10¢
 YELLOW ONIONS lb. 19¢