

BOWLING

SUGAR BOWL

League Standings

MONDAY MIXED FOURSOME	High team series, Bass Union 76, 3001; Riebs Market, 2966/1006; Nyssa Auto Parts, 2943/1017; and Oregon Concrete, 1023.
Talbot-Larsen 10 2	
Holcomb-Stacy 9 3	
Heitzman-Stam 8 4	
Sarazin-Larson 7 5	0 0 0
Lundy-Snyder 7 5	PATRIOTS LEAGUE
VanderOord-Stam 6.5 5.5	
Stedman-Hill 5 7	White Satin 10 2
Allen-Purinton 5 7	Wilson's 9 3
Lann-Phifer 5 7	Nyssa Welding 9 3
Looney-Takami 4 8	Paulus Jewlry 8 4
Wilson-Metcalf 4 8	Sugar Bowl 8 4
Jones-Knowles 1.5 10.5	Muir Roberts 7 5
Womens high game and series, Leslie Larsen, 213/535; Nancy Heitzman, 200/496; Nellie Pounds, 191/508.	Olympic 5 7
Mens high scratch game and series, Ray Larson, 203/211/219/633; Sonny Takami, 207/565; Klaas Laan, 202; and Dick Pounds, 536.	Eders 2 10
Team high game and series, Holcomb - Stacy, 849; and Looney-Takami, 2402.	Idaho First Nat'l. 1 11
Bowlers of the week, Leslie Larsen, 535 scratch; and Nancy Heitzman, 601 handicap.	Sunset Market 1 11
0 0 0	

THURSDAY NIGHT DOUBLES	COMMERCIAL LEAGUE
Butcher-Chadd 12 4	Johannesen-Adams 11 5
Stuthell-Clary 11 5	Nyssa Co-op 11 5
Greenway-Morrison 10 6	Hiatt Bros. 9 7
Riggs-Card 9 7	White Satin Sugar 8 8
Emery-Wagner 9 7	First Nat'l. Bank 7 9
Morrison-Reed 8 8	Eastmans Ins. 5 11
Morris-Miller 7 9	M & W Market 5 11
Holmes-Myrick 7 9	
Martin-Hatch 6.5 9.5	High individual game, Harry Taylor, 222; Cork Olsen, 213; and Ward Lundy, 203.
VanderOord-Pounds 6 10	High individual series, Cork Olsen, 572; Bill Pursell, 572; and Ernest Fisher, 543.
Focht-Maltsberger 5.5 10.5	High team game, Howard's Texaco, 1051; Johannesen-Adams, 1029; and First Nat'l. Bank, 1023.
Frank-Seward 5 11	High team series, Johannesen-Adams, 2954; White Satin Sugar, 2876; and First Nat'l. Bank, 2861.
Womens high scratch game and series, Allene Holmes, 210/494; Beverly Morrison, 209/515; Margie Miller, 179 and Anna VanderOord, 500.	
Mens high scratch game and series, Don Hatch, 225/532; Ray Riggs, 192; Gib Holmes, 188/522 and Rex Wagner, 492.	
Team high game and series, Holmes-Myrick, 881/2385.	
Bowlers of the week, Anna VanderOord, 500 scratch and Allene Holmes, 614 handicap.	
0 0 0	

SPORTSMAN LEAGUE
Riebs Market 13 3
Idaho Sporting Goods 12 4
Oregon Concrete 11.5 4.5
Owyhee Barber Shop 11 5
B & M Equipment 10 6
Nyssa Auto Parts 8 8
Bass Union 76 7 9
Q Trophy Cabin 4.5 11.5
Parma Water Lifter 3 13
Idaho Power 0 16
High individual series, Fred Schilling, 561; Jack Carter, 556/220; Frank Landin, 555; Monty Burbank, 228; John Purinton, 216.

Waterfoul Hunters Should Have Top Season

Oregon shotgun enthusiasts will have one of the longest seasons on the calendar beginning October 9, the date that marks the opening of the state-wide waterfowl season. The season is scheduled to extend through the remainder of the year plus the first nine days in January 1972. Nimrods will also take snipe beginning October 9 but the season on these marshland birds will extend only through December 12.

Hunters are reminded that special regulations apply to Columbia Basin counties on both ducks and geese in relation to bag limits and length of season. Nimrods are urged to check the rule book carefully.

Field reports indicate that waterfowl hunters should enjoy another excellent season. Local production of ducks and geese is on a par with past good nesting years and northern flights are said to be equal to or better than the excellent flights last year. All marshlands in the state have ample water supplies which will re-birds.

Large flights of pintails are already reported at coastal marshes and these areas are also expected to pull good flights of mallards, widgeon, canvasbacks, scaup, and other ducks. Pintail and mallard flights at Sauvie Island are larger than normal, holding promise for a good opening at this popular public shooting area. Flights down through the Willamette Valley generally build as November rains flood the lowlands.

Although southwestern Oregon provides limited opportunities, the outlook appears better than usual. Marshlands around Coos Bay, Coquille, and other estuaries provide the bulk of the shooting along the south coast while the Rogue Valley

provides the better hunting inland. The Denman Game Management Area generally provides some fine mallard shooting. Agate Lake is also a good producer, especially on stormy days.

Excellent prospects are in store for nimrods in the Klamath Basin. Large flights of pintails have funneled into the Klamath marshes and there is a good hatch of local ducks and Canada honkers. Northern flights of ducks and geese will swell the total to several million birds during the peak of the migration. In central Oregon, Davis, Wickiup, and Crane Prairie generally provide the better duck shooting. The grain fields of Sherman County are expected to draw large flights of Canadas.

In the upper Columbia and Umatilla areas fair waterfowl shooting is predicted for the opening on locally-raised ducks and geese. The better shooting is not expected until mid-November when main flights of mallards, widgeon, and Canadas generally move in. The Baker Valley should also hold lots of wintering birds with mallards, widgeon, and Canadas predominating. Local production is reported good at Ladd Marsh and good flights of northern birds are expected about mid-season. Hunters should enjoy good mallard hunting in the John Day Valley.

Great hunting is predicted for waterfowlers at all marshlands in the southeast. The Malheur Refuge should be excellent as should Warner Valley and Summer Lake. For the opening nimrods will have to depend on early flights of pintails or local birds. Flights of snow geese are expected at Summer Lake about mid-October. Snows, cackling geese, and some white-

Nyssa Wins No. Five, 24-0

Halfback Ron Moffis scored two touchdowns and led Nyssa to its fifth win of the season without a loss, as the Bulldogs blanked Burns 24-0 in a Greater Oregon League game last Thursday evening.

The Bulldogs wore down the Highlanders in the fourth quarter and scored 16 of their points in the final period of play.

Moffis' first touchdown came in the first quarter on a four-yard run and Jon Reece added

the two-point conversion on a run from his end position.

The next two quarters were scoreless, with the Nyssa defense forcing several Burns fumbles, and Nyssa made one

gallant goal-line stand.

Then in the fourth quarter Darwin Haney, who played a fine game on both offense and defense, exploded through the right side of his line after it appeared

he was stopped for a 50 yard touchdown. Moffis passed to Greg Michael for the two-point conversion and the score was 16-0.

Then Moffis scooped up a Burns fumble and ran 64 yards

into the end zone, then passed to Rick Chester for the two-point conversion to end the scoring.

Friday evening the Bulldogs will try for win number six

against a strong Bishop Kelly team from Boise on the home field. They are 3-0 in Greater Oregon play, and the Kelly Knights will be the third Treasure Valley League opponent.

Lewis Shoots Hole In One

Solon Lewis, Nyssa, shot a hole in one at the Ontario Golf Course Saturday, September 23. Lewis used a 7 iron on the 131-yard 3rd hole for the first ace of his golfing career.

Other members of the foursome were Mrs. Lewis and Mr. and Mrs. Waynard Talbot.

Bowling Jamboree Held At Boise

Mrs. Kay Brendle of Nyssa attended the Idaho State Bowling Jamboree held Sept. 25 and 26 at the Downtowner in Boise.

Mrs. Brendle is the State Director of the Idaho Women's Bowling Association.

Several noted people in the bowling world spoke at the meeting. Among them were Frank Miller, executive secretary of ABC; E. Boyd regional director of IBC; Chuck Miller, regional American Junior Bowling representative, Governor Andrus and many others.

The group enjoyed dinner and dancing after the meeting.

Eagles Plan Golf Tourney

Nyssa Eagles and their wives who play golf are looking forward to a Chapman Best Ball Tournament Sunday afternoon at the Ontario Golf Course, followed by dinner at the Lodge. Tee off time is at 2 p.m., and the dinner will be served between 5:30 and 7:30 that evening.

Entry fee will be \$4.00 per person, which pays for the dinner and prize money. Tom Stenkamp is chairman of the event, assisted by Duke Hipp and Dale Garrison.

ROCK SHOW AT MOUNTAIN HOME

The Eureka Rock and Gem Club in Mountain Home will hold its fifth annual Rock Show at West Elementary School in Mountain Home on October 9 and 10. Directional signs will be posted in addition to the many interesting displays shown by club members, a slide program showing colorful rocks and minerals will be presented.

There will be dealers who will furnish rough and polished material for sale to the public. A small admittance fee will be charged. Drawings for door prizes will be held each day. A snack bar will serve homemade pies, chicken and noodles, sloppy joes and beverages. Show will open at 10 a.m. on both days and close at 10 p.m. on Saturday and at 6 p.m. on Sunday. Everyone invited and urged to attend for an enjoyable weekend.

My Neighbors

"Watch where you're going, can't you, you clumsy bird brain!"

fronts will move in to Warner about the same time. A variety of ducks, mallards predominating, will be available at all three areas. Fine Canada goose hunting is predicted for Silver Lake, the Chewawee marsh, Abert Lake, Goose Lake Valley, and stubble fields from Burns to Frenchglen.

Best hunting in the Snake and Malheur basins is expected in mid-season after marshlands and potholes in the higher plateaus freeze up, forcing birds to concentrate on open water areas. Local birds will provide some early shooting. Major flights of ducks and geese should be using the Snake and lower Malheur from mid-November through the remainder of the season.

Waterfowl Hunters Should Have Top Season

Oregon shotgun enthusiasts will have one of the longest seasons on the calendar beginning October 9, the date that marks the opening of the state-wide waterfowl season. The season is scheduled to extend through the remainder of the year plus the first nine days in January 1972. Nimrods will also take snipe beginning October 9 but the season on these marshland birds will extend only through December 12.

Hunters are reminded that special regulations apply to Columbia Basin counties on both ducks and geese in relation to bag limits and length of season. Nimrods are urged to check the rule book carefully.

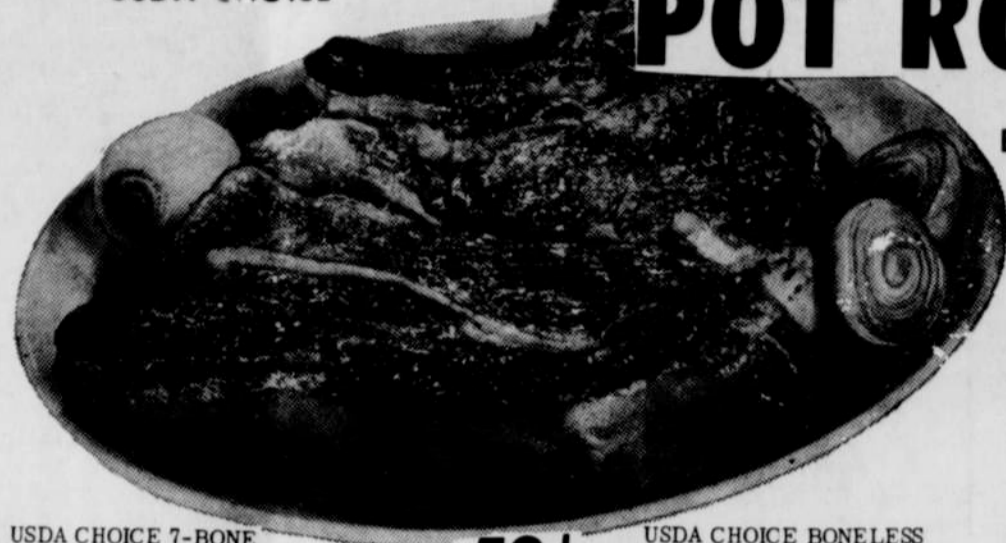
Field reports indicate that waterfowl hunters should enjoy another excellent season. Local production of ducks and geese is on a par with past good nesting years and northern flights are said to be equal to or better than the excellent flights last year. All marshlands in the state have ample water supplies which will re-birds.

Large flights of pintails are already reported at coastal marshes and these areas are also expected to pull good flights of mallards, widgeon, canvasbacks, scaup, and other ducks. Pintail and mallard flights at Sauvie Island are larger than normal, holding promise for a good opening at this popular public shooting area. Flights down through the Willamette Valley generally build as November rains flood the lowlands.

Although southwestern Oregon provides limited opportunities, the outlook appears better than usual. Marshlands around Coos Bay, Coquille, and other estuaries provide the bulk of the shooting along the south coast while the Rogue Valley

SECOND BIG WEEK OF 12 WEEKS OF CHRISTMAS

USDA CHOICE



POT ROAST

BLADE CUT

45¢

lb.

USDA CHOICE 7-BONE POT ROAST lb. 59¢

USDA CHOICE BONELESS POT ROAST lb. 89¢

USDA CHOICE ROUND BONE POT ROAST lb. 79¢

WESTERN STEAK lb. 69¢

COUNTRY STYLE 2 lb. PKG. PORK SAUSAGE 69¢

LEAN, BONELESS, CUBES BEEF STEW lb. 79¢

PRESTONE
ANTI-FREEZE
GAL.
\$1.49

FOLGER'S ALL GRINDS
COFFEE
2-lb. CAN
\$1.49

FRISKIE'S DRY
DOG FOOD
25 lb. BAG
\$2.59

WESTERN FAMILY 15 oz.
CHILI
CON CARNE
4/\$1

PICKLES BANQUET-POLISH-GARLIC DILLS 59¢

PAPER TOWELS 3/89¢

SHERBET 1/2 GAL. 59¢

PINEAPPLE 1 1/2 oz. 6/\$1

CANNED POP 12/89¢

DRINK MIX 2-lb. 67¢

GRAPENUTS 49¢

DINNER FOR CATS 4-lbs. 69¢

RAISINS 2-lb. PKG. 59¢

GRAPEFRUIT 16 oz. 3/79¢

CLAM CHOWDER 3/\$1

PEANUT BUTTER 89¢

SYRUP 47 oz. 79¢

DRESSING 48 oz. 89¢

INDIAN GEM 16 oz.

CORN

WALLA WALLA 15 oz.

SPINACH

TOM THUMB 16 oz.

PEAS

GOLDEN GRAIN 6 oz.

DINNERS

4/\$1

WHITE KING

TOILET SOAP

12 BARS \$1

MAID-O-CLOVER BUTTER 1-lb. PRINT 69¢

DOLE PINEAPPLE JUICE 46 oz. 3/89¢

CANDY FRESH ORANGE SLICES GUM DROPS lb. 29¢

SPECIALS

100 ct. NORWICH ASPIRIN TABLETS 17¢

100 ct. REG. \$1.98 MYLANTA TABLETS \$1.37

12 oz. REG. \$1.98 MYLANTA LIQUID \$1.37

REG. 49¢ LIP SAVER BLISTICK 15¢

RIGHT GUARD REG. \$1.69 ANTI PERSPIRANT 8 oz. 89¢

10 qt. W/HANDLE PLASTIC PAILS 37¢

3/4" x 1100" ROLLS FREEZER TAPE 2/99¢

Frozen Foods PERFORM MENU MAGIC!

ORE-IDA 2-lb. POTATOES CRINKLE CUT 3/\$1

WESTERN FAMILY 10 oz. RASPBERRIES 3/\$1

MORTON'S 20 oz. PIES PUMPKIN OR MINCE 4/\$1

POTATOES



U.S. #1

10-lb. BAG

39¢

FRESH CLIP TOP CARROTS lb. 10¢

LARGE SLICING TOMATOES lb. 19¢

TABLE QUEEN SQUASH 5/\$1

15¢ lb.

JUMBO SIZE AVOCADOS ea. 29¢

FRESH, NEW CROP 1-lb. BAG CRANBERRIES 3/\$1

YAMS OR SWEET POTATOES

Prices Effective Thursday-Friday-Saturday



High Quality Low Prices plus

NYSSA... OREGON

N ti si fi dt w st or wi M Ber mar Bluf grac a sl mor open Th Rutl Calif Kinn kane, was l ciden Wh they Over: resid They and a side Ontar. Mr. thank their over ti This campa lect e Amalc