

# ROUND STEAK

U.S.D.A. CHOICE FULL CUT

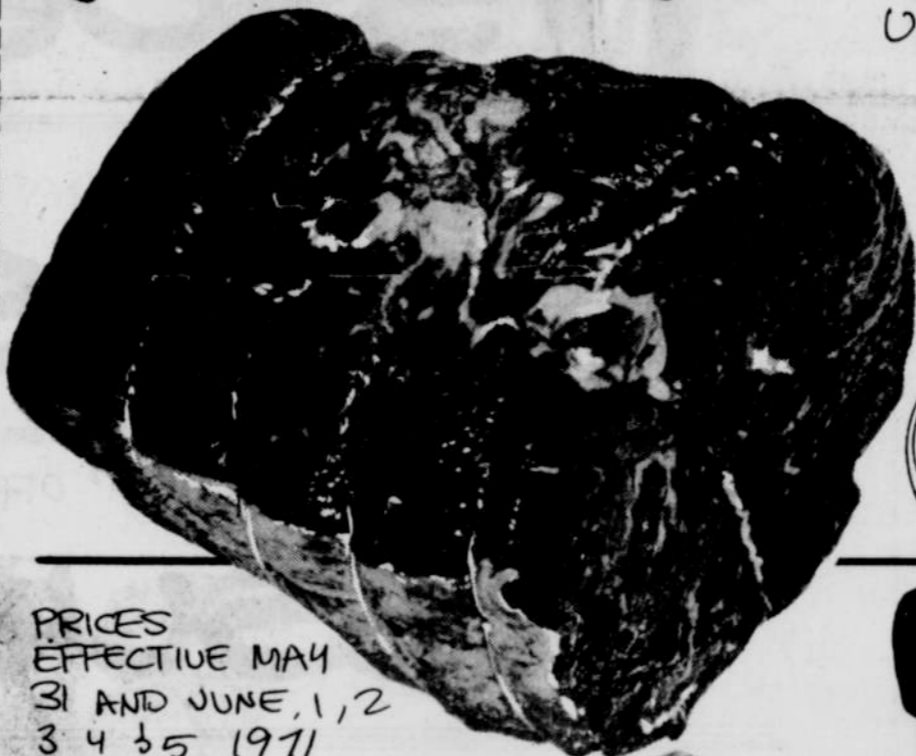


**89¢**  
lb.

USDA CHOICE BONELESS  
**ROUND STEAK**  
**98¢**  
POUND

# RUMP ROAST

USDA CHOICE WELL TRIMMED



**89¢**  
lb.

THIS WEEK'S FEATURE



PROVINCIAL  
Bread & Butter  
PLATE only **9¢**  
ea. with every \$5 purchase  
REG. 69¢ VALUE

Decorator inspired "deep lustre" blue and white fine quality dinnerware. Every week a place setting piece is featured at this very special price. Take home 3 or 4 pieces each time you shop!

BUILD A COMPLETE SET AND SAVE UP TO 50%!

PRICES EFFECTIVE MAY 31 AND JUNE 1, 2 3 4 5 1971



HORMEL RANGE

**BACON**  
THICK SLICED  
**129¢**  
2 POUND PACKAGE

TOP USDA CHOICE  
**ROUND STEAK** **109¢** lb.

all meat LARGE SKINLESS  
**MORRELL FRANKS** lb. **69¢**

Morrell SLICED 6 VARIETIES  
**LUNCH MEAT** **3** 6oz PKGS. FOR **1**

CLIP THIS COUPON

WITH THIS COUPON  
**Hormel CAN'D HAM** **279** 3 lb. CAN  
1 HAM PER COUPON **329** WITHOUT COUPON  
EXPIRES JUNE 5/71 GOOD ONLY AT M&W

**M&W MARKETS**  
High Quality Low Prices...plus