

BOWLING

SUGAR BOWL

League Standings

PATRIOTS LEAGUE

| | | |
|----------------|----|----|
| White Satin | 20 | 8 |
| Nyssa Welding | 17 | 11 |
| Mildres | 15 | 13 |
| Brackens | 15 | 13 |
| Eders | 15 | 13 |
| Olympic | 14 | 14 |
| Sugar Bowl | 14 | 14 |
| Paulus Jewelry | 9 | 19 |
| B & M | 8 | 20 |

High games and series: Celle Hayden, 195/525; Billie Wright, 192/190/554; Peg Zinn, 190; Phoebe Snyder, 530.
High team game and series: Nyssa Welding, 827 and White Satin, 2298.
Bowlers of the week, Billie Wright, 554, scratch and Celle Hayden, 624 handicap.

COMMERCIAL LEAGUE

| | | |
|---------------------|----|----|
| First National-Bank | 24 | 12 |
| Johannesen-Adams | 24 | 12 |
| Howards Texaco | 22 | 14 |
| American Foods | 19 | 17 |
| M & W Market | 18 | 18 |
| Hiatt Brothers | 18 | 18 |
| Eastmans Ins. | 15 | 21 |
| White Satin Sugar | 14 | 22 |
| Q's Trophy | 14 | 22 |
| Nyssa Co-op | 12 | 24 |

High team game and series: Johannesen-Adams, 1068/2757; Howards Texaco, 1038/2884; Hiatt Brothers, 1023/2854.
High men's game and series: Emil Wohlke, 245/621; Alvin Haney, 206; Woodie Seuell, 202/551; Willis Hiatt, 544.

TUES. NIGHT BUSINESSMEN

| | | |
|--------------------|------|------|
| Dessert Seed | 58 | 42 |
| Sinclair | 57 | 43 |
| Mirage | 55.5 | 44.5 |
| Home Dairies | 53.5 | 46.5 |
| Twilight Cafe | 52 | 48 |
| Niagara | 51.5 | 48.5 |
| Eastside Cafe | 51.5 | 48.5 |
| Stirling Insurance | 51 | 49 |
| Murdock-Mendiola | 47.5 | 52.5 |
| Elliott Tire | 45 | 55 |
| Nyssa Police | 43.5 | 56.5 |
| Western Farmer | 34 | 46 |

High team scratch game and series: Eastside Cafe, 734/776/2876; Twilight Cafe, 739/2739; Dessert Seed, 2724.
High team handicap game and series: Eastside Cafe, 862/820/3220; Twilight Cafe, 830/3103; Sinclair, 3106.
High individual games: Roy Milkleson, 236; Rudy Marostica 219; Vance Gardner, 217.
High individual series: Chet Takatori, 614/757; Rudy Marostica, 743; Clark Olson, 731.

Idaho Sporting Goods 13 23

| | | |
|------------------|----|----|
| Nyssa Auto Parts | 12 | 24 |
| Oregon Concrete | 9 | 27 |

High team games and series: Idaho Sporting Goods, 998/2897; Idaho Power, 999/2895; Nyssa Auto Parts, 2868; and Zinns Union 76, 1014.
High individual games and series: Jim Peters, 218/595; Rudy Marostica, 214/595; Joel Mitchell, 224; Emil Wohlke, 583; Don Breshears, 528.

High boys games and series:

| | |
|---------------|---|
| Bob Marostica | 167/362; Larry Haney, 151/397; John Lopez, 148 and Roger Glenn 364. |
|---------------|---|

Bowlers of the week: LaNae

| |
|--|
| Hammon, 484, scratch and Anna VanderOord, 597, handicap. |
|--|

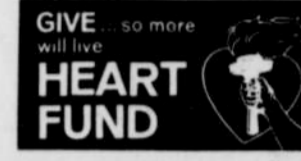
Men To Bowl In Tournament

| | | |
|-------------------|------|------|
| Reed-Page | 19.5 | 8.5 |
| VanderOord-Focht | 19 | 9 |
| Holmes-Myrick | 17 | 11 |
| Stutheit-Pollard | 16 | 12 |
| VanZelf-Bartron | 16 | 12 |
| Bullard-Stam | 15 | 13 |
| Frank-Domenico | 13.5 | 14.5 |
| Riggs-Card | 12.5 | 15.5 |
| Morris-Pounds | 8.5 | 19.5 |
| Jeffereis-Newbill | 8 | 20 |
| Reed-Morrison | 6 | 22 |

Women's 600 Club Have Bowling Party

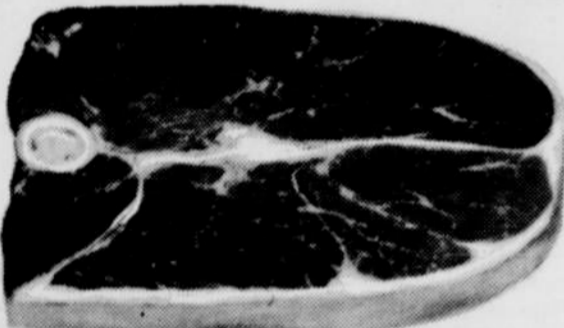
Five members of the Nyssa Women's 600 Club met last Sunday evening at the Sugar Bowl for a group bowling party. To begin the evening, a quiz was given to test the members technical knowledge of bowling. Stella Ross received a prize for earning the highest score.
First and second place prizes were given in each of the following three lines of bowling. Members decided prizes would be given in the first game to those getting the most spares, in the second line for the most strikes and in the third game to the members rolling the lowest scores.
Members attending the session were Eris Bertram, Ruth Chadd, Diane Jennings, Bonnie Nichols and Stella Ross.

High games and series: Alta Stunz, 187; Carolyn Pruy, 179; Helen Okai, 176/485; Emma Benedict, 462; Liz Vanderwall, 456.
Bowlers of the week, Freda Holcomb, 457, scratch and Liz Vanderwall 564.



FOURTH BIG WEEK OF OUR SPRING FLING BONUS STAMPS-BARGAINS GALORE

Round Steak



U.S.D.A. CHOICE FULL CUT **lb. 89¢**

meats

| | |
|-----------------------------------|------------|
| USDA CHOICE, BONELESS ROUND STEAK | lb. 98¢ |
| USDA CHOICE, TENDER CUBE STEAK | lb. \$1.29 |
| USDA CHOICE TOP ROUND STEAK | lb. \$1.09 |
| USDA CHOICE, BARON OF BEEF ROAST | lb. \$1.09 |
| BONELESS, LEAN BEEF STEW | lb. 89¢ |

AT HARD TO BEAT PRICES

| | |
|-------------------------------|-------------|
| USDA CHOICE RUMP ROAST | lb. 89¢ |
| FRESH CRAB | lb. 59¢ |
| GREENLAND TURBOT FILLET | lb. 59¢ |
| WILSON'S LUNCHEON MEAT | 6 oz. 3/\$1 |
| KEIM'S MILD CURE SLICED BACON | lb. 63¢ |
| CHALLENGE MILD CHEESE | lb. 79¢ |

KRAFT'S 7 1/4 oz. **DINNERS 5/89¢**

FIRESIDE **COOKIES 1 1/2 lb. PKG. 3/\$1.00**

FIGARO 6 1/2 oz. **CAT FOOD TUNA 12/\$1.00**

SHAVERS 16 oz. CANS **GRAPEFRUIT SECTIONS 4/\$1.00**

NALLEY'S PICKLES BANQUET DILL, POLISH DILL, KOSHER DILL, DILLS. 2 22 oz. JARS 89¢

DELICIOUS, TIME SAVERS **ROZEN FOODS PICTSWEET VEGETABLES CORN, PEAS, SPINACH, PEAS & CARROTS, CHOPPED BROCCOLI 10 oz. 6/\$1.00**

HI-TOP 10 oz. **RASPBERRIES 3/\$1**
MORTON'S 11 oz. **DINNERS ALL VARIETIES EXCEPT HAM 2/79¢**

LIPTON, **TEA BAGS 48 COUNT - BLACK 59¢**
GALA JUMBO, **PAPER TOWELS ASSORTED COLORS 3/\$1**
WHITE KING "D" 49 oz. **DETERGENT 2/\$1**

M & W BLEACH 2/89¢
WALLA WALLA 16 oz. **SPINACH 5/\$1**
PIONEER 16 oz. **TOMATOES 5/\$1**

CLEARWATER 6 1/2 oz. **BONITA FLAKES 4/\$1**
HORMEL 5 oz. **VIENNA SAUSAGES 4/89¢**
SWIFT'S **CHICKEN 3 lbs. 6 oz. CAN 99¢**

SWIFT'S 3 lb. CAN **CHICKEN & DUMPLINGS 99¢**
MEADOW GOLD 2 lb. SIZE **COTTAGE CHEESE 59¢**

RAIN CHECK ITEMS

INDIAN GEM 16 oz. **APPLESAUCE 8/\$1**
LIBBY'S 16 oz. **CORN WHOLE KERNEL 6/\$1**

M.D. 4 ROLL-PACK **TISSUE 3/\$1**
BUMBLE BEE 16 oz. **RED SALMON 89¢**

WESTERN FAMILY 11 oz. **MANDARIN ORANGES 4/\$1**

BALLARD **BISCUITS 8 oz. TUBES 12/\$1**
KERNS 46 oz. **APRICOT NECTAR 3/\$1**
DOWNY 33 oz. **FABRIC SOFTENER 79¢**

25 oz. **GIANT SIZE BIZ 79¢**
CHUN KING 43 oz. **DINNERS 79¢**

CHUN KING, CHOW MEIN 5 oz. **NOODLES 3/79¢**
WESTERN FAMILY 15 oz. **BEANS LITE KIDNEY-DARK KIDNEY-RED BEANS 5/89¢**

CAMPBELL'S SOUP 6/\$1
CREAM OF CHICKEN - MUSHROOM - BEAN W/BACON - VEGETABLE

KRUSTEAZ 3 1/2 lbs. **PANCAKE MIX 69¢**
HERSHEY'S 2 lb. CHOC. **DRINK MIX 69¢**

POTATOES



| | |
|----------------------------|---------------|
| GARDEN FRESH BROCCOLI | lb. 19¢ |
| NEW, FRESH ASPARAGUS | lb. 49¢ |
| CARROTS OR TURNIPS | lb. 10¢ |
| CHOICE SWEET NAVAL ORANGES | 10 LBS \$1.00 |

U.S. NO. 1 RUSSETT **39¢**
10 lb. BAG

TEXAS PINK, LARGE **GRAPEFRUIT 12/\$1**
RED DELICIOUS APPLES 5 \$1.00
ATMOSPHERE CONTROLLED 5 LBS.

PEOPLE WHO KNOW THEIR GROCERIES... Shop and Save Here

| | |
|---------------------------------------|-------|
| PEPSODENT TOOTHBRUSHES | 2/49¢ |
| 20 oz. - REG. \$1.29 LISTERINE | 89¢ |
| LUSTRE-CREAM 12 oz. HAIR SPRAY | 39¢ |
| SPONGE-DUST MOP, WET MOP | 99¢ |
| MODGLIN MOPS 99¢ | |
| MEN'S SIZE JERSEY GLOVES 3/\$1 | |

Prices Effective Thursday - Friday - Saturday

High Quality Low Prices... plus

NYSSA... OREGON