

## Knife And Fork Club To Hear Cuban Refugee

It was in 1949, the Normans went to Cuba to start the coffee farm. In 1956, Fidel Castro came to the mountains where the Normans lived to start the two revolution which was to bring disaster to Cuba and danger to all of Latin America. The Castro hide-out headquarters were but 15 miles from the Norman home.

meeting Monday evening, November 17 at the East Side cafe.

A former journalist who was on Havana Post Times and who dug out exceptional information, Norman has had a weekly column in a few U. S. newspapers and has appeared on many TV and Radio programs all over the country. He is president of the Cuban Exile Committee of Southern California and working diligently to prevent further Castro explosions in Latin American countries.



### ADRIAN GAA GIRLS WIN HOCKEY METE

Nov. 3 the Adrian High School GAA hosted the championship hockey games, contestants were Capitol, Borah, Meridian, Nampa, Caldwell and Adrian. In the first games, Adrian beat Capitol, 3-2; Borah beat Meridian, 1-0; and Nampa drew a bye. In the semi-finals, Nampa beat Caldwell, 1-0; Adrian beat Borah, 1-0. In the finals Adrian was victorious over Nampa, 2-0; and Nampa came out runner up. Adrian remained undefeated for the season.

High team game, Nyssa Co-Op, 1064; and Johannesen-Adams, 1048.

High team series, Johannesen-Adams, 3104; 1st Nat. Bank 3023; and Nyssa Co-Op, 2946.

### SPORTSMEN LEAGUE

Oregon Concrete 25 11  
Wilson's Janitorial 21 15  
Zinns Union 76 20 16  
Nyssa Auto Parts 19 17  
O K Tire Shop 17 19  
Riebs Market 16 20  
Idaho Power Co. 14 22  
Idaho Sporting Goods 12 24

High individual game, Melvin Hittle, 206; Jack Carter, 204; and Bob Webb, 201.

High individual series, Emil Wohlcke, 546; Dick Miller, 535; and Jim Peters, 534.

High team game, OK Tire Shop, 1052/1028; Idaho Power Co., 1020.

High team series, OK Tire Shop, 2964; Oregon Concrete, 2858; and Nyssa Auto Parts, 2842.

### MONDAY MIXED LEAGUE

Lundy-Snyder 24 12  
Sadamori-Takami 24 13  
Studer-Holcomb 23 13  
Sarazin-Larson 20 16  
Holcomb-Stacy 19.5 16.5  
Laan-Phifer 18 18  
Jones-Knowles 18 18  
VanderOord-Stam 16.5 19.5  
Stam-Fortin 16 20  
Stedman-Stam 13.5 22.5  
Fangen-Talbot 12 24  
Wilson-Metcalf 11.5 24.5

Women's high scratch game, Sarazin-Morris, (sub), 192.

Women's high scratch series, Sarazin-Holcomb, 516.

Men's high scratch game and series, David Sarazin 209/516.

High team game and series, Studer-Holcomb, 867/2400.

Bowlers of the week, Barbara Sarazin and JoAnne Holcomb, 516, scratch; Clara Jones, 608, handicap.

### PERSONAL

Mr. and Mrs. Ted Gerdes of Caldwell, were Sunday dinner guests of Mrs. Bill Schoen.

## HOUSEWIVES LEAGUE

Gutter Busters 25 7  
Pin Poppers 20 12  
Odd Balls 19 13  
Missing Three 17.5 14.5  
Gutter Gussies 17 15  
Pin Splitters 15 17  
Chukars 15 17  
Sugar Cubes 15 17  
Sandbaggers 13 19  
Wranglers 13 19  
Trying Trio 13 19  
Lucky Strikers 9.5 22.5

### COMMERCIAL LEAGUE

Johannesen-Adams 26 10  
Howard's Texaco 21 15  
Q's Trophy 18 14  
Eastman Agency 18 18  
Nyssa Co-Op Supply 17 19  
Waite Satin Sugar 16 20  
1st National Bank 14 22  
M&W Market 11 21

High individual game & series, Rudy Marostica, 236/956; Charley Newbill, 229/582; Ernie Metcalf, 220; and George Hust, 576.

High team game, Nyssa Co-Op, 1064; and Johannesen-Adams, 1048.

High team series, Johannesen-Adams, 3104; 1st Nat. Bank 3023; and Nyssa Co-Op, 2946.

### THURSDAY MIXED LEAGUE

Stuthiet-Pollard 24.5 11.5  
Card-Riggs 23.5 12.5  
VanderOord-Church 21 15  
Miller-Miller 19.5 16.5  
Jefferies-Newbill 17.5 18.5  
Bullard-Stam 17 19  
Holmes-Myrick 16 20  
Brittingham-Savage 15 21  
Morris-Pounds 13 23  
Pett-Larsen 13 23

Women's high scratch game, Connie Bullard, 199. Women's high scratch series, Edie Stuthiet, 532.

Men's high scratch game and series, Bernie Pollard, 201/511.

High team game, Bullard-Stam, 825.

High team series, Holmes-Myrick, 2360.

### PATRIOTS LEAGUE

Mildreds 27 9  
Wilson's 24 12  
White Satin 21 15  
Eders Supply 21 15  
Nyssa Welding 19 17  
Brackens 14 22  
Sugar Bowl 14 22  
B & M 14 22  
Paulus Jewelry 13 23  
Regal Ride 13 23

High scratch game, Betty Marostica, 200; Irene Church, 199; and Alice Vandewall, 192.

High scratch series, B. Marostica, 543; Lois Page, 522; and A. Vandewall, 507.

Bowlers of the week, B. Marostica, 543, scratch; and I. Church, 606, handicap.

### COMMERCIAL LEAGUE

Johannesen-Adams 27 13  
Howard's Texaco 22 18  
Eastman Agency 22 18  
Q's Trophy Cabin 21 15  
Waite Satin Sugar 19 21  
1st National Bank 18 22  
Nyssa Co-Op Supply 17 23  
M&W Market 11 21

High individual game, Bernard Eastman, 217; Don Moss, 214; and Frank Landin, 211.

High individual series, B. Eastman, 579; Willis Hiatt, 559; and F. Landin, 533.

High team game, Eastman Agency, 1066/1057 and 1st Nat. Bank, 991.

High team series, E. Agency, 3099; 1st Nat. Bank, 2916; and Q's Trophy, 2895.

### PERSONAL

Mrs. E.G. Thompson of Abernathy, Texas visited for one week with Mr. and Mrs. Wilton Jackson. She was on her way home from visiting her other son Mr. George Jackson of Anchorage, Alaska. Bruce Jackson came home for the weekend to visit his grandmother. He attends Oregon State University.

## TEST YOUR DRIVER I Q

Most drivers have weak points in their driving. If you are an experienced driver, you probably can recall several instances when you made a quick stab at the brake, or a sudden swerve to avoid an accident.

Close calls are warnings; warnings that you may have become inattentive to your driving, that laws may have changed since you passed your driving test, or that you are taking the judgement and ability of other drivers too much for granted.

This quick quiz, prepared by the Motor Vehicles Division, is designed to disclose how knowledgeable you are about driving. There are questions on Oregon traffic law, as well as some questions about good driving practices and the natural laws that affect driving. This is one test that will not be scored by anyone else. It has only one purpose: to help you evaluate your own driving knowledge and ability.

(Circle the correct answer)

1. If a car approaching from your right is slightly further from the intersection than your car, but shows no sign of slowing down, you should:

A. Increase your speed so there will be no doubt as to who has the right of way.

B. Maintain the same speed.

C. Slow down and be ready to stop in case he speeds up and tries to beat you.

2. If the light turns amber as you are entering an intersection, you should:

A. Pass on through cautiously.

B. Stop immediately, no matter where you are.

C. Stop, and back up past the crosswalk.

3. You are planning to change lanes or turn a corner and there are other cars around you. Oregon law requires you to signal:

A. At least 50 feet before the turn.

B. At least 100 feet before the turn.

C. 150 feet before the turn.

4. Which is most useful in going around a curve?

A. Friction in the brakes.

B. Air resistance.

C. Friction in the tires.

D. Friction between tires and road surface.

5. Unless there are signs indicating otherwise, the designated speed in a residential district in Oregon is:

A. 20 miles per hour.

B. 25 miles per hour.

C. 30 miles per hour.

6. On a right-hand curve, centrifugal force will tend to pull your car to:

A. The left.

B. The right.

7. Wet pavement can increase stopping distance by as much as:

A. 5 times.

B. 10 times.

C. 20 times.

8. After passing a vehicle, return to your own lane when:

A. You are one car length ahead of the vehicle overtaken.

B. You can see the entire vehicle in your rearview mirror.

C. You have sounded your horn and signalled that you intend to move back into the right lane.

## Wish I'd Said THAT



Don't worry about how the ball bounces unless you are the one who dropped it. — Harold S. May, The Florence (Ala.) Herald.

\*\*\*\*\*

Be as anxious to help others as you are to accept favors. — Eugene Gay, The Calvert (Tex.) News - Messenger.

## Journal Classifieds Bring Results!

9. The general meaning of highway signs can be identified from the greatest distance by their:

A. Color.

B. Shape.

C. Location along the road.

D. Wording.

10. It is illegal to cross the center line of a highway when approaching the crest of a grade or on a curve if your view of the road ahead is obstructed:

A. 500 feet ahead.

B. Any distance that would be hazardous if another vehicle should approach from the opposite direction.

C. 1000 feet ahead.

11. While waiting to make a left turn, your wheels should be pointing:

A. Straight ahead.

B. Turned to the left.

12. The driver of a slow moving vehicle is required to pull off on a two-lane highway at the first safe place to let faster moving traffic pass only if:

A. The driver of the slower moving vehicle is traveling below the designated or posted speed for the highway.

B. The driver of the overtaking car is obeying Oregon's basic rule speed law.

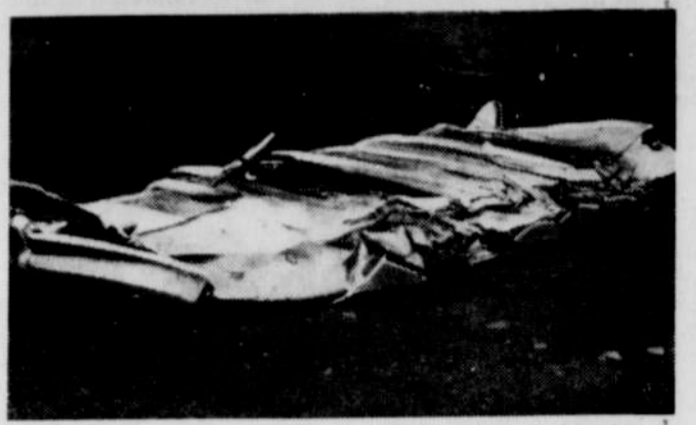
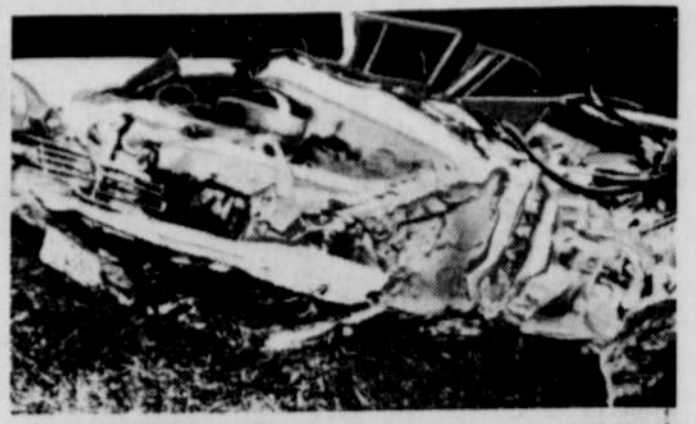
13. In rural areas, it is against the law to make a reverse (U-Turn):

A. On or near any curve or hillcrest, or any place on a highway where you cannot see the road for at least 500 feet in either direction.

B. On or near any curve or hillcrest, or any place on a highway where you cannot see the road for at least 1,000 feet in either direction.

ANSWERS: 1. (C) 2. (A) 3. (B) 4. (D) 5. (B) 6. (A) 7. (B) 8. (B) 9. (B) 10. (B) 11. (A) 12. (B) 13. (B)

## Man vs. Machine



The difference between man-made and machine-made wrecks is shown in these two photos from the National Auto and Truck Wreckers Association. The car at top, which collided with a truck, is almost totally demolished, but even that destruction is not complete enough for the wreckers' purposes. The 15,000 wreckers in the U. S. salvage and re-sell more than \$5 Billion annually in reclaimed parts. Then, to ship auto hulks to scrap processors, they feed the hulks into a giant machine that flattens them like the car in the lower photo.

## It's Your Law!

### EAGER BEAVER

"Hard work never hurt anyone," Eddie Beaver always said. He worked faster than anyone else in the shop.

But Eddie's union had a rule that any member who produced more than the set piece-rate must take time off. His extra production would be "banked" and he could take time off or use the extra work to get full pay when the shop work slowed down.

Eddie disobeyed the rule. He kept on working faster than the rule allowed, and taking less time off. His union warned Eddie to slow down, or it would "fine" him. Eddie and his employer complained that the rate was unfair.

When the union fined him, Eddie went to court, but lost. He had to pay the fine.

Joining a union is somewhat like joining a club. If most members vote a course of action, you either go along or pay the penalty. If you disagree with its policies, your best bet is to try to work within the organization to bring about change.

Eddie's union had voted the piece-work limit to help its members, and the employer had agreed. Doing the work slowly promoted safety, and the older and slower men could not keep up the pace. The rule spared them embarrassment or even their jobs.

The law watches labor and management closely, limiting what they may do.

(Oregon lawyers offer this column as a public service. No person should apply or interpret any law without the aid of an attorney who is completely advised of the facts involved. Even a slight variance in fact may change the application of the law.)

**CYCOLOGY SEZ!**

**A Big Bundle Of 6% Cash . . .**

**Your Early Delivery Bonus**

COME IN NOW . . . TO TALK DETAILS AND RESERVE YOUR BONUS.

**Owyhee TRUCK & IMPLEMENT CO.**  
NYSSA, OREGON

Phone 372-2226

## NEW IMPROVED FEEDS FOR HEALTHIER PROFITS



Protect your stock . . . and your profits . . . with our fortified feeds. Count on us for cattle rations scientifically formulated to guard health, promote growth and gains.

- Top Quality Cattle Rations for All Needs
- Pelleted Feeds • Special Feed Supplements

### COMPLETE LINE OF FEEDS

A bigger return from your feed dollars is what you want and what you get, with our livestock and poultry feeds.

## FARMERS FEED & SEED CO.

117 Good Ave. Ph. 372-2201 Nyssa

## We care where our product is served.

Beer served in pleasant and wholesome surroundings is the aim of the United States Brewers Association. And we are always striving to do something about it.

The USBA is represented by field men around the country. They meet with proprietors of establishments where beer is sold. They work in every way possible to promote a set of high standards wherever beer is served.

This USBA effort means even more enjoyable places for America's great beverage of moderation.

UNITED STATES BREWERS ASSOCIATION, INC.



## 19 Plus Benefits

## Give You POSITIVE

## GRIP and GO!

## CO-OP NYLON

## Country Squire

## MUD and SNOW TIRES

GRIPPING "GO" POWER comes from scientific angled tread construction with large and small angles, bars, grooves and tractionized tread for fast stopping, grip and go.

ECONOMICAL TIRE STRENGTH comes from construction features: nylon cord, with more moisture resistance and less heat build-up; polymerized tread and cord rubber; tubeless safety and tough synthetic rubber.

ENJOY HAPPIER WINTER MOTORING on smart-looking, fluted, narrow sidewall tires; easy rolling, quiet tires that give long mileage. Designed to be used with steel lugs if desired.

## NYSSA CO-OP SUPPLY

18 N. SECOND NYSSA, OREGON PHONE 372-2254