

# MALHEUR COUNTY COURT PROCEEDINGS

## MINUTES OF THE MEETING OF THE MALHEUR COUNTY COURT — JANUARY 5, 1966

Called to Order by Judge Ellis A. White with Commissioners Jacob Fischer and Earl Flock present. The County Court accepted the appointment of Herbert Hartwell to assume the position of County Auditor as of January 1, 1966.

The following claims were approved and ordered paid:

### General County Fund

U. S. National Bank, Interest on Bank Loan, \$1,521.11.  
Larry Roberts, Witness Fees, \$15.44.  
Consolidated Freightways, Freight on Equipment, \$9.39.  
Isleri Travel Agency, Sheriff, Travel, \$358.80.  
William Doman, Increase in Salary for December, \$25.00.  
Keith Carson, Witness Fees, \$9.80.  
Thomas W. Carson, Witness Fees, \$9.80.  
Thomas R. Carson, Witness Fees, \$9.80.

Don Hosler, Petty Cash, County Court Office, \$1.67; Auditor Office, \$2.95; Courthouse Supplies, \$1.11; Courthouse Repairs, \$6.65; Postage, \$1.50; Indigent Veteran, \$1.00; Foster Home Care, \$3.00; \$17.88.  
First National Bank, Transportation of Household Goods of Alvin Whipple from Walla Walla to Ontario, \$350.00.  
Dale Ayres, Circuit Court Witness Fees, \$15.44.  
Public Employees Retirement Board, Expense of Social Security, \$346.69.  
Walter Burdette, Witness Fees, \$10.38.  
Adolph Schroeder, Witness Fees, \$17.88.  
Business Men's Assurance Co., Employees Insurance, \$119.64.  
Don Winslow, Witness Fees, \$16.40.  
Earl Flock, Special Meetings, \$160.00; County Court Travel, \$47.95; \$207.95.  
Jacob Fischer, Special Meetings, \$10.00; County Court Travel, \$10.56; \$20.56.  
William L. Doman, Juvenile Travel and Expense, \$167.06.  
Ellis White, County Court Travel, \$126.39.  
Max Taggart, Circuit Court Attorney Fees, \$27.56.  
David E. Joyal, Reporter Travel, Circuit Court, \$40.50.  
Malheur Home Telephone, Circuit Judge, \$29.10.  
Malheur Enterprise, Circuit Court Office Supplies, \$1.55.  
Edward Stanton, Foster Home Care, \$50.00.  
Starlight Cafe, County Court Office Expense, \$17.45.  
Martin P. Gallagher, Attorney's Fees, \$50.00.  
Vale Consumers Co-op, Sheriff Office, \$110.74; Assessor Office, \$23.68; Health Office, \$31.80; \$166.22.  
Kalbus Office Supply, Sheriff's Office, \$3.75; Clerk's Office, \$3.75; Auditor Office, \$66.50; Health Office, \$3.75; Office Equipment, \$193.52; Office Equipment, \$194.30; \$465.57.  
National Sheriffs Association, Sheriff's Membership and Insurance, \$60.50.  
Elmer Tiffany, Relief Jailer, \$30.00.  
Troy Jones, Jail Housekeeping, \$23.22.  
T. Harold Tomlinson, Clerk's Office, \$20.00.  
Addressograph - Multigraph Corp., County Clerk Office, \$32.75; Assessor's Office Supply, \$6.80; \$39.55.  
Standard Oil of California, Assessor's Travel, \$12.53.

Roy & Owens Tire Service, Assessor Travel, \$7.50.  
Xerox Corporation, Assessor, \$42.31.  
Aeme Visible Records, Inc., Assessor, \$126.50.  
Northwest Gas & Oil, Assessor, Travel, \$19.45.  
Transport Clearings, Assessor Office, \$3.50.  
Oregon State Tax Commission, Assessor Office, \$57.56.  
John Hutchens, Travel, \$125.04; Office, \$1.50; \$126.54.  
The Colwell Co., D. A. Office, \$6.40.  
Mary Ellen Nelson, Health Travel, \$14.90.  
Phillips "66," Health Department Travel, \$1.94.  
Ontario Wheel & Frame Alignment, Health Department Travel, \$12.95.  
Don R. King, Health Department Travel, \$33.65.  
Jack Boles, Witness Fees, \$10.00.  
Westcott Oil Corp., Health Department, \$10.81.  
Kessler Chevrolet, Health Department Travel, \$95.80.  
Malheur Enterprise, Health Department Office, \$10.35.  
McKesson & Robbins, Health Dept. Clinic Expense, \$11.02.  
Malheur Drug, Inc., Health Department, \$26.52.  
M. E. Droulard, Medical Investigator, \$79.50.  
State Public Welfare Commission, Quarterly Payment, \$23,491.50.  
A. F. Peters, J. P. Office Rent, \$45.00.  
E. Otis Smith, Clerical, \$50.00; Office Rent, \$50.00; Utilities, \$5.00; Telephone, \$12.65; \$117.65.  
Mary Graham, J. P. Office Rent, \$45.00; Utilities, \$8.00; Telephone, \$15.00; \$68.00.  
Glenn E. Ward, Witness Fees, \$6.92.  
E. Otis Smith, J. P. Postage, \$10.00.  
M. G. Palmer, J. P. Office, \$30.00.  
Payless Drugs, Juvenile Office, \$4.98.  
William Jordan, Juvenile Travel, \$122.64; Telephone, \$1.90; \$124.54.  
Pacific Northwest Bell, Juvenile Phone, \$2.15.  
Malheur Propane, County Courthouse Fuel, \$15.84.  
Dentinger Feed & Seed, House-keeping Supplies, Courthouse, \$40.00.  
Ponder Oil Burner Co., Repairs, Courthouse, \$66.50.  
Honeywell, Inc., Repair, Courthouse, \$463.50.  
Oregon State College Extension Service, Extension, \$4,607.00.  
Mrs. Joseph Maughan, Veterans' Clerical, \$50.00.  
Joseph Maughan, Veteran Office Rent, \$50.00.  
Joseph S. Maughan, Veteran Travel and Expense, \$68.28.  
Harlan P. Kahler, M.D., Examination of Mentally Ill, \$113.00.  
Estano's, Office Equipment, Juvenile Department, \$120.46.  
National Council on Crime and Delinquency, Juvenile Office, \$5.00.  
Antonio Martinez, Foster Care, \$24.90.  
Mr. and Mrs. Rex Caskey, Foster Care, \$20.00.  
Mr. Lester Fifer, Foster Care, \$25.00.  
Mr. and Mrs. Whalen Morgan, Foster Care, \$50.00.  
Mr. and Mrs. Norvelle Robbins, Foster Care, \$100.00.  
Mr. and Mrs. Rod McKay, Foster Care, \$50.00.  
The Merc, Foster Care, \$25.00.  
Mr. and Mrs. Frank Wolfe, Foster Care, \$60.30.  
St. Alphonsus Hospital, Foster Home Care, \$42.00.  
State Compensation Dept., State Industrial Accident Commission, \$5.00.  
Boise Blue Print Co., Surveyor, \$19.26.  
Walter Gillespie, Surveyor, \$429.06.  
Mrs. Wilda Forsman, Abundant Food Program, \$45.00.  
Hilton M. Clark, County Planning Commission, \$26.50.  
Dunham Printing Co., Election Supplies, \$28.50.  
Francis Petrie, Circuit Court Witness Fees, \$32.80.  
Gilbert Klinkenberg, Witness Fees, Circuit Court, \$16.40.  
Raymond F. Russell, J. P. Witness Fees, \$5.16.  
Marion F. Tracy, J. P. Witness Fees, \$5.16.  
Mrs. May Tracy, J. P. Witness Fees, \$5.16.  
Raymond Russell, Witness Fees, \$6.36.  
Marion Tracy, Witness Fees, \$8.20.  
Hannah Burbank, Witness Fees, \$8.20.  
Tom Edmondson, Witness Fees, \$7.72.  
Joe Mallea, Grand Jury Duty, \$7.72.  
Don Gibson, Grand Jury, \$7.72.  
Mike Powell, Grand Jury, \$7.72.

Parts, \$30.02; Fuel, \$103.82; \$133.84.  
Kessler Chevrolet, Parts and Repairs, \$5.38.  
Roy & Owens Tire Service, Tires, \$4.00.  
Petersons-de Laet, Inc., Parts, \$17.68.  
A. C. Houston Lumber Co., Bridge, \$2,820.81; Road, \$39.12; Shop, \$153.77; \$3,013.70.  
Malheur Propane Co., County Shop Fuel, \$1.95.  
A. C. Houston Lumber Co., Bridge, \$1,454.36.  
Gentry Ford Sales, Parts, \$39.19.  
Standard Oil of California, Motor Fuel, District No. 6, \$42.00.  
City of Vale, Shop Expense, Water, \$4.00.  
Ontario Laundry & Cleaners, Shop Expense, \$22.20.  
Ben's Truck Parts, Parts, \$52.71.  
Thompson Electric, Parts, \$26.60.  
Oregon Radiator & Salvage Co., Parts, \$2.50.  
L. F. Hucker, Parts, \$1.20.  
Vale Consumers Co-op, Road Maintenance, \$2.15.  
State Line Cafe, Road Maintenance, District No. 6, \$229.60.  
Western Equipment Co., Parts, \$55.05.  
Bullock Auto Parts, Parts, \$46.78.  
American Oil Co., Motor Fuel, \$1,301.15.  
Elliott Tire Co., Tires and Tire Repair, \$361.26.  
Connie's Service & Repair, Parts, \$30.00.  
Crosby's Service, Parts, \$27.41.  
Benson Glass & Paint, Parts, \$98.50.  
Petersons-de Laet, Inc., Parts, \$16.99.  
Valley Auto Supply, Parts, \$39.19.  
Vale Shoe Shop, Parts, \$1.75.  
D & B Supply, Road Department Equipment, \$512.00.  
State of Oregon, Road Maintenance and Paint, \$355.00.  
Producers Lumber Co., Bridge, \$70.00.  
Don Maxon, Road Department Equipment, \$243.74.  
Ontario Pipe Supply, Road Maintenance, District No. 6, \$112.17; Napton, \$17.92; \$130.09.  
Service Parts Co., Parts, \$111.71.  
Howard Bratcher, Road Maintenance, \$101.25.

Special Relief Fund  
Ontario Clinic, Aid to Indigent, \$18.50.  
Vale Consumers Co-op, Aid to Indigent, \$10.00.  
Mrs. Ramona Garza, Aid to Indigent, \$25.00.  
Ellis White, Indigent, Grocery, \$1.37; Coal, Indigent, \$21.00; Grocery, Indigent, \$17.00; \$39.37.  
Barrigan Dental Office, Aid to Indigent, \$26.00.

Enforcement Fund  
Park Motel, Liquor Investigation, \$6.00.  
MOTION made and seconded the meeting be adjourned until January 12, 1966. Voted on and carried.

/s/ ELLIS A. WHITE  
County Judge  
/s/ EARL FLOCK  
County Commissioner  
/s/ JACOB FISCHER  
County Commissioner

MINUTES OF THE MEETING OF THE MALHEUR COUNTY COURT — JANUARY 12, 1966  
Called to Order by Judge Ellis A. White with Commissioners Jacob Fischer and Earl Flock present. The following claims were approved and ordered paid:

General County Fund  
Thunder Egg Room, Petit Jury Expense, \$43.20.  
Norris Crownover, Circuit Court Reporter Travel, \$35.00.  
M & W Market, Office Expense, \$18.52; Jail Kitchen, \$13.25; \$31.77.  
The Frontier Refining Co., Sheriff's Travel, \$3.26.  
Ontario Flight Service, Sheriff's Travel, \$48.00.  
Howard's Texaco Station, Sheriff's Travel, \$4.15.  
Northwest Gas & Oil, Inc., Sheriff's Travel, \$64.94.  
Richfield Oil Corp., Sheriff's Travel, \$3.00.  
Standard Oil Co. of California, Sheriff's Travel, \$29.39.  
Gentry Ford Sales, Sheriff's Travel, \$75.58.  
Long's Service Center, Sheriff's Travel, \$63.35.  
Westcott Oil Corporation, Sheriff's Travel, \$69.94.  
Herbert Hartwell, Auditor, Travel, \$80.00.  
Ontario City Library Board, Third Quarter, Salaries and Expenses, \$5,702.00.  
Robert A. Clausen, Jury Expense, Ontario J. P., \$5.00.  
Charles Dealy, J. P. Ontario, Jury Expense, \$5.00.  
Marilyn Goul, J. P. Ontario, Jury Expense, \$5.00.  
Arlene Richards, J. P. Ontario, Jury Expense, \$5.00.  
Estelle L. Chilman, J. P. Ontario, Jury Expense, \$5.00.  
Martha N. Holland, J. P. Ontario, Jury Expense, \$5.00.  
Vivian A. Rusk, J. P. Ontario, Jury Expense, \$5.00.  
Grace M. Crume, J. P. Ontario, Jury Expense, \$5.00.  
Que Chan Morgan, J. P. Ontario, Jury Expense, \$5.00.

General Road Fund  
Don Hosler, Petty Cash; Road Maintenance, \$3.02; Bridge, \$3.73; Parts, \$2.65; \$9.40.  
Public Employees Retirement Board, Road Maintenance, \$114.18.  
Chevron Gas Station, Motor Fuel, \$68.16.  
Northwest Gas & Oil, Inc.,

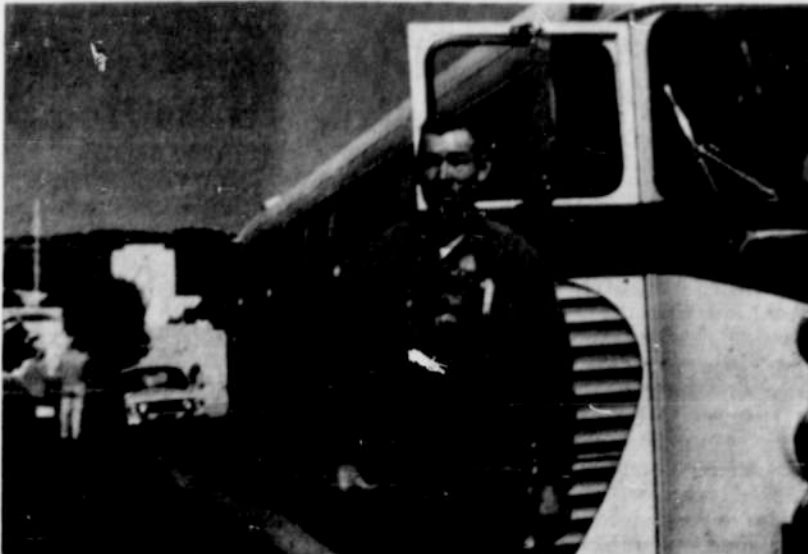
BAKER PRODUCTION CREDIT ASSOCIATION  
210 S.W. Second Street  
Ontario, Oregon  
Telephone 889-6471



## PCA Farm and Ranch Loans Cost Less

When farmers and ranchers borrow money to finance capital improvements or provide funds for operating expenses, costs are lowest through PCA — Production Credit Association — sometimes only half of some other loans.  
You pay interest only on the money you actually use, and only for the time you use it. Payments are applied first to principal, reducing the balance subject to interest.  
Loans for operating funds are budgeted for all year, including planting, growing and harvesting.  
Drop by our office and let us show you how our loan plans serve you best and cost you less. Also get your copy of "Budgeting for Profit", without cost or obligation.

BAKER PRODUCTION CREDIT ASSOCIATION  
210 S.W. Second Street  
Ontario, Oregon  
Telephone 889-6471



ON A RECENT TRIP to Hawaii, Ross Mills of Adrian visited many places of interest. Among them was the Punch Bowl cemetery where the body of famous War Correspondent Ernie Pyle is buried near the tall white monument. Mills, attired in large-flowered Hawaiian shirt, stands near the bus which took him on this particular tour.

## Resume of a Trip to Hawaii as Told by Ross Mills to Mrs. G. E. Mackey

I left on a DC-6 at 9 a.m. Jan. 23 from the Boise airport, flew to San Francisco and from there went by jet to Honolulu. I landed at the airport at 4:10 p.m., or 7:10 MST, and occupied a room at the Islander hotel in Waikiki where I stayed for a week. I went on guided tours of the island, seeing many sugar cane and pineapple fields and places of interest.  
While on this island, I got in touch with a cousin, Robert L. Johnston, whom I had not seen for about 22 years, and spent a day with him and his family. He works for the government's missile program.  
I also took a guided tour of what is considered the three best night clubs in Honolulu and Waikiki. They are the Royal Hawaiian Ballroom, Hilton Tapa Room and Queen's Surf.  
In the Jolly Rogers restaurant, where I was dining one evening, there was a baked potato on my plate. Being curious as to where the spud came from, I asked the waitress to find out and she reported to me that it had been packed and shipped at the Oreda plant in Ontario.  
I left Honolulu by plane Jan. 31 and flew to the island of Hawaii. We landed at a town of Hilo and were met there by the Gray Line Tour company. We went around the south side of the island, over the volcanoes of the area, which were many and very beautiful. We continued around the southwest side of the island to a town called Kona.  
I stayed at the Leialoha hotel, managed by Mrs. Lea Vaughan whose maiden name was Logan and a former resident of the Brogan area north of Vale. Some of the Logans still reside in that community. I stayed in this area three days and took guided tours of the island and acquired many friends whom I shall never forget.

Incidentally, this town of Kona is truly a fisherman's paradise and a place of relaxation. I left by plane at 10:30 a.m. for the island of Hawaii and we landed at the little town of Lihue which to me is very beautiful because of its many flowers.  
While on this island, I again took several guided tours. Some of the places visited are Main's Cactus Gardens, where there were about 100 varieties of blooming cactus; Waimea Grand Canyon, said to be the second grand canyon of the world; the Barking Sands and a Waialua river boat ride to a cave called the Fern Grotto. I spent two weeks on these three islands and it was truly a relaxing and fun-filled trip.

Sees President Johnson  
Upon flying to Honolulu enroute back to San Francisco, I was at International Airport when President Johnson landed at Honolulu and saw all the activities in person. I left Honolulu airport at 11:30 p.m. and landed in San Francisco at 4:30 a.m. PST.  
I arrived in Salt Lake City at 9:30 a.m. when I was met by relatives and spent a week visiting in their homes. I left Salt Lake Feb. 13 by plane for Boise airport where I was met by Mr. and Mrs. Wilson Witt and brought back to Adrian.  
Upon being contacted, I shall be glad to share my pictures and comments of a trip I shall never forget.

## Two Women Join OKK Organization At Recent Meeting in Brewer Home

By Emily Myers  
OWYHEE—OKK club meeting was held Feb. 17 at the home of Mrs. Donald Brewer with Mrs. Mabel Houston assisting as co-hostess. In attendance were 12 members and four guests. Mrs. Jim Hite and Mrs. Tom Okal became members of the club.  
Refreshments were served at the close of the session by the hostesses.  
Sunday dinner guests of Mr. and Mrs. Donald Brewer were Mary Wilcox of Vale, Mr. and Mrs. Cliff Beckstead. Afternoon visitors in the Brewer home were the Homer Brewer and Keith Tallman families.  
Mr. and Mrs. Buster Talbot and family of Westfall were Sunday evening visitors in the Charles Culbertson home.

Entertain Church Group  
Mr. and Mrs. John Strickland entertained Feb. 17 for members of the Loyalty class of Nyssa Christian church with 26 guests in attendance. Mr. and Mrs. Emerson Bingham of Fruitland were out-of-town guests.  
Mrs. Charlie Culbertson and Mrs. Dorothy Kygar and children were Sunday dinner guests of Mr. and Mrs. Jerry Gordon and family at Jordan Valley. The two women were Friday visitors at the Lynn Kygar home in Boise and also called on Larry Culbertson at Caldwell Memorial hospital.

Mr. and Mrs. James Stephen and Mrs. Anna Scott attended services Sunday at the Cathedral of the Rockies in Boise.  
Mr. and Mrs. Roy Holmes entertained with Friday evening dinner for Mr. and Mrs. Marion Chard.  
Mrs. Herschel Thompson and Mrs. Marie Earp of Kingman Colony were Feb. 17 afternoon visitors of Mrs. Chester Mills.

SPEND SUNDAY IN BOISE  
Mr. and Mrs. S. P. Bybee visited Sunday with a friend, Carl Lindsey of Rupert, at the Veterans' hospital in Boise. The Bybees also visited an uncle, E. L. Jensen, while in the Idaho capital city.

Mr. and Mrs. Scott Neal of Boise were weekend visitors in the Neil Dimmick home. The Dimmicks were Feb. 17 evening dinner guests of Mr. and Mrs. Fred Guthrie.  
Mr. and Mrs. Howard Day were weekend guests at the home of their son-in-law and daughter, Mr. and Mrs. James O. Stephen at Burns.

Enforcement Fund  
Park Motel, Liquor Investigation, \$6.00.  
MOTION made and seconded the meeting be adjourned until January 12, 1966. Voted on and carried.

/s/ ELLIS A. WHITE  
County Judge  
/s/ EARL FLOCK  
County Commissioner  
/s/ JACOB FISCHER  
County Commissioner

MINUTES OF THE MEETING OF THE MALHEUR COUNTY COURT — JANUARY 12, 1966  
Called to Order by Judge Ellis A. White with Commissioners Jacob Fischer and Earl Flock present. The following claims were approved and ordered paid:

General County Fund  
Thunder Egg Room, Petit Jury Expense, \$43.20.  
Norris Crownover, Circuit Court Reporter Travel, \$35.00.  
M & W Market, Office Expense, \$18.52; Jail Kitchen, \$13.25; \$31.77.  
The Frontier Refining Co., Sheriff's Travel, \$3.26.  
Ontario Flight Service, Sheriff's Travel, \$48.00.  
Howard's Texaco Station, Sheriff's Travel, \$4.15.  
Northwest Gas & Oil, Inc., Sheriff's Travel, \$64.94.  
Richfield Oil Corp., Sheriff's Travel, \$3.00.  
Standard Oil Co. of California, Sheriff's Travel, \$29.39.  
Gentry Ford Sales, Sheriff's Travel, \$75.58.  
Long's Service Center, Sheriff's Travel, \$63.35.  
Westcott Oil Corporation, Sheriff's Travel, \$69.94.  
Herbert Hartwell, Auditor, Travel, \$80.00.  
Ontario City Library Board, Third Quarter, Salaries and Expenses, \$5,702.00.  
Robert A. Clausen, Jury Expense, Ontario J. P., \$5.00.  
Charles Dealy, J. P. Ontario, Jury Expense, \$5.00.  
Marilyn Goul, J. P. Ontario, Jury Expense, \$5.00.  
Arlene Richards, J. P. Ontario, Jury Expense, \$5.00.  
Estelle L. Chilman, J. P. Ontario, Jury Expense, \$5.00.  
Martha N. Holland, J. P. Ontario, Jury Expense, \$5.00.  
Vivian A. Rusk, J. P. Ontario, Jury Expense, \$5.00.  
Grace M. Crume, J. P. Ontario, Jury Expense, \$5.00.  
Que Chan Morgan, J. P. Ontario, Jury Expense, \$5.00.

General Road Fund  
Don Hosler, Petty Cash; Road Maintenance, \$3.02; Bridge, \$3.73; Parts, \$2.65; \$9.40.  
Public Employees Retirement Board, Road Maintenance, \$114.18.  
Chevron Gas Station, Motor Fuel, \$68.16.  
Northwest Gas & Oil, Inc.,

BAKER PRODUCTION CREDIT ASSOCIATION  
210 S.W. Second Street  
Ontario, Oregon  
Telephone 889-6471

For the guy who'd rather drive than fly: Chevelle SS396

Chevelle SS 396 Sport Coupe with Body by Fisher, seat belts front and rear, one of eight features now standard for your added safety.

**POTENT THE CHEVROLET WAY**

This is about a Chevelle—a very special one—with a bulging hood, a black grille and red stripe nylon tires. Start it up and you've tuned in on 396 cubic inches of Turbo-Jet V8.  
Get it moving and suddenly you're a driver again. With gears to shift. A clutch to work. Even a set of gauges to read, if specified.  
Now take a curve, surrounded by a machine that delights in crooked roads.  
This, you see, is an SS 396. A Chevelle, yes. But what a Chevelle.

**SWAGER CHEVROLET**  
420 Main Street Nyssa, Oregon Phone 372-2224

Nyssa PTA INTERNATIONAL DINNER

Saturday, Feb. 26—5 to 8 p.m. IN SCHOOL CAFETORIUM

Adult Tickets . . . . . \$1.50  
Children, 6 to 12 Years . . . . . 75  
Family Tickets . . . . . 5.00

Classifieds Bring Results!