

THE GATE CITY JOURNAL

H. F. BROWN, W. S. BROWN, Owners.
FRED LAFOLLETTE, Editor and Manager.

NYSSA, OREGON, JUNE 8, 1929
TO THE LANDOWNERS OF KINGMAN COLONY DRAINAGE DISTRICT

We, the undersigned supervisors of Kingman Colony Drainage District, having made an audit of the treasurer's books covering the past current year, as provided by law, submit herewith our report as follows:

TRIAL BALANCE		
Close of business June 5, 1929		
	Dr.	Cr.
Advertising	\$ 82.10	
Bonds outstanding		\$ 40000.00
Bond coupons paid	2835.00	
County assessor	21283.92	
Drainage Tax Record		71509.04
Drainage system construction	55554.33	
Emergency Fund	34.99	
Emergency	138.47	
First Nat. Bank of Vale	160.49	
General Expense	2485.58	
Interest and Discount	1948.74	
Interest paid on warrants	1252.08	
Maintenance Fund	5.11	
Maintenance	1383.74	
Material	135.88	
Salary and Office Expense Fund	14.54	
Salary and Office Expense	2465.07	
Warrants outstanding		3771.00
	\$115280.04	\$115280.04

RECEIPTS FOR YEAR ENDING JUNE 5, 1929		
Cash in bank June 6, 1928	\$ 297.76	
County treasurer	7036.04	
Warrants issued	6085.00	
		\$13418.80

EXPENDITURES FOR YEAR ENDING JUNE 5, 1929		
Advertising	\$ 11.00	
Bonds paid	5500.00	
Bond coupons paid	2565.00	
Interest paid on warrants	180.18	
Maintenance	307.04	
Material	93.13	
Secretary salary	300.00	
Supervisors	15.00	
Office expense	7.81	
Warrants paid	4385.00	
Total expenditures	\$13364.16	

DISTRIBUTION OF CASH		
Emergency Fund	\$34.99	
Maintenance Fund	5.11	
Salary and Office Expense Fund	14.54	
		\$4.64

Total cash in bank June 5, 1929 \$4.64
Total expenditures and cash June 5, 1929 \$13418.80

Respectfully submitted,
FRANK T. MORGAN
ROBT. R. OVERSTEET,
Supervisors.
CORRECT ATTEST:
FRANK D. HALL, Secretary-Treasurer.

MALHEUR'S CENTRAL OREGON WORK RETARDED

By recent order of the state highway department, the graveling crew of the Burrelle-Harper link of the Central Oregon highway will consist of Patrolman Frank Michaels and his assistant, P. H. Ennis. The road is to wait for its needed surfacing until next spring, it has been said. Micheal will take care of the recently graded road, however, and it will be in fairly good condition for travel.

It seems that funds for this end of the Central Oregon have been exhausted for the current year, although there is much construction activity on the Burns-Bend link. In addition to the request for surfacing of this much traveled link his year, it is Malheur's plea that the survey to the Harney junction be made this year. To date the survey ends a few miles beyond Harper.

Again, work has been retarded on this end of the oldest road on the program of the state highway department, regardless of numerous requests for its completion in Malheur county.

THE TARIFF TURMOIL

In spite of President Hoover's recommendation that the present special session of Congress confine its tariff legislation to a limited revision of those schedules which appeared to be in greatest need of adjustment, the House bill recently passed makes revisions in duties on nearly five hundred different articles.

What the Senate will do to the bill remains problematical, but the indications are that a long drawn out wrangle will precede the final passage of a new tariff measure. It is freely predicted that the matter will engage the attention of Congress all summer, with little likelihood that anything better than a piece of political patchwork will emerge in the end.

Commenting on the situation, J. Lewis Benton, general secretary of the National Association of Manufacturers, renews the plea of the organization for a stronger Tariff Commission and an extension of the flexible provisions of the present tariff law giving more latitude to the President in modifying individual schedules after study and recommendations by the Commission. This would avoid serious business disturbances and tend to prevent misunderstandings with other countries which affect our foreign trade.

If legislators could be brought to act upon the theory that the tariff is an economic and not a political question a more business-like method of handling it might be adopted. The idea advanced by the manufacturers' organization is manifestly based on common sense principles, and it should have respectful consideration at the hands of Congress.

INTERESTING NOTES

The fossil of a giant sea cow estimated to be 2,000,000 years old was dug up from a beach cliff at Santa Barbara, Calif.

Queen Elizabeth of Belgium is an enthusiastic amateur photographer.

A new building in London is made of polished black granite.

A German gardener dug up a gold coin minted in 1444. Only one specimen of this coin was known before and he received for his find the equivalent of a year's wages.

Deer sinews and tiger bones are used in China in preparing tonics for invalids.

The legal marriage age for young men in Italy is now 16 and for girls 14.

More than 1,000 acres of tobacco were cultivated in Australia last year.

Iceland is the largest civilized country in the world with out railroads.

Sweden can now telephone to 23 foreign countries.

A modern airport is to be built in Antwerp, which is to hold jointly with Liege, next year, a world's fair, commemorating the centenary of Belgian independence.

Plan now to celebrate with Vale, July 2, 3 4 We will show you a good time.

Even a strong, silent man will loosen up a bit at \$1 a word.

If, as a writer suggests, women's sentiments are ex-

pressed by their clothes, they appear to be less sentimental than formerly.

Keep the piano; the strings will come handy in repairing your arial.

When you take steps to get away from debt, don't let your foot slip.

Late reports say Mexico still has a living ex-president, but we don't guarantee this news.

Lunatics publish a paper at an asylum in Humberstone, England. There may be others.

It is easy to make a strong argument if you don't allow yourself to be hampered by facts.

We mildly wonder what brand of cigarette is keeping Commander Byrd's Antarctic party fit.

Correct this sentence: "The United States Senate is the most august deliberative body in the world."

A hotel owners' association will take drastic steps to prevent guests being robbed by transient crooks. Proprietors must protect their rights.

Crossing a street is an exhilarating sport, but it is humiliating to be tackled by a flivver and thrown for a loss when only two yards from the curbstone goal.

ON THE OLD JOB

H. D. Holmes
Transfer and Baggage
All kinds of hauling in City limits
Nyssa, Oregon Phone 5

B & T

BARBER SHOP
Between Lawrence Gas Station and Ford Garage
SOLICITS YOUR PATRONAGE
Bertsch & Teow
PROPS.

EAT, DRINK and BE MERRY

AT THE

Nyssa Cafe

Under New Management

Everything in the market good to eat.

Try our HOME-MADE PIES

Quick and Efficient Service

MRS. M. W. MOONEY
Proprietress

OWYHEE Barber Shop

We Specialize in Modern Barber Work

Beauty Shoppes in Connection

Mr. and Mrs. Dewey Burton,
Owners

Don't Be Fooled by Using Cheap Paint

USE

SHERWIN-WILLIAMS

Paint and Varnish

And have a real job of painting

We have Builders' Hardware

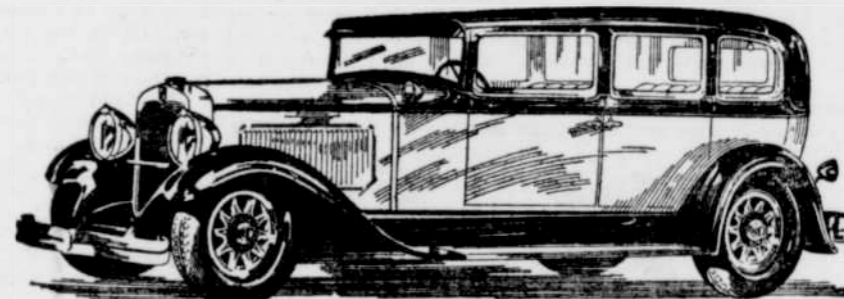
See us for your Lumber and Building Material, COAL AND WOOD.

Nyssa Lumber Co.

PHONE 47

NASH "400"

Leads the World in Motor Car Value



3 4-DOOR SEDANS

STANDARD SIX
Delivered, Fully Equipped

SPECIAL SIX
Delivered, Fully Equipped

ADVANCED SIX
Delivered, Fully Equipped

\$1145

\$1570

\$1797

Lower, Delivered, Completely Equipped Prices

THROUGHOUT the automobile industry Nash engineering enjoys a reputation for enviable excellence.

A clear example is the Standard Six "400" 4-Door Sedan—a big, full 5-passenger car—the leader of the \$900 field in quality, and performance, and value.

DRIVE it! Note the exceptional power, speed, and acceleration of its Nash-designed, high-compression, 7-bearing motor, with Bohnalite pistons, and torsional vibration damper.

Chief among the attractions of the

Delivered, Fully Equipped, Price Range of 25 Nash "400" Models, \$1066 to \$2249 including Touring, Roadster, Coupe, Cabriolet, Victoria and Sedan Models

larger Special Six and Advanced Six 4-Door Sedans is the great Twin-Ignition motor.

Nash-Bijur centralized chassis lubrication is another invaluable asset of these larger "400's".

ALL Nash "400" models are fully factory equipped with front and rear bumpers, hydraulic shock absorbers, and spare tire lock and tire cover—at no extra charge.

Nash also offers three 2-Door Sedans at respectively lower prices.

POWELL SERVICE STATION
NYSSA, OREGON

USED CARS

See Our Fine Re-conditioned

BARGAINS

In used cars before making your spring choice

We buy, sell or trade cars

POWELL

SERVICE STATION
NYSSA, OREGON

See The

NYSSA GRAIN & SEED COMPANY

FOR FULL LINE OF

GARDEN AND FIELD SEEDS

Starting Mash and Chicken Scratch

Phone 26

NYSSA

OREGON