

Salt Lake City Firms

To assure prompt service and quick returns when answering these advertisements, mention the name of this paper.

BARBER AND BUTCHER SUPPLIES
Gillette Razor Blades Pkg. 35c; German G3 blades 1/2 dozen 25c; Tree Brand & Sheffield Razors \$3.00 up; Novelty catalog 10c. Moab Co., 135-37 Regent St., Salt Lake City, Utah.

AGENTS WANTED
For Style Center Made to Measure Clothes. \$22.50 up. Big money for right men. Write 515 McIntyre Building, Salt Lake City, Utah.

RADIO MAGAZINE
RADIO FANS "The Carrier Wave" weekly magazine with Programs, Time Tables, Radio Topics, Questions, Exchanges, etc. 28 issues \$1.00. Write for Free Copy, 71 West Broadway, Salt Lake City, Utah.

TELEGRAPH SCHOOL
\$145 to \$225 Monthly.
Learn Telegraphy. Great opportunities. Clean easy work. Positions secured. Earn while you learn. Hundreds of graduates. Oldest and best school. Write for free catalogue. American Telegraph College, 104 S. Main, Salt Lake.

CALORIC

"Best Heat Under the Sun"
The most modern and economical home heating plant (Pipe or Pipeless). Can be installed in practically any home. Write for FREE booklet on "Scientific Home Heating."

GRANITE LUMBER & HARDWARE CO.
1084 E. 21st So., Salt Lake City

HOW

PARENT RAVENS PROTECT NESTINGS FROM HARM.—
"I was once concealed in my 'hide,' watching and photographing a pair of ravens at their nest on a wild and desolate crag on the Welsh mountains," writes Oliver G. Pike, English ornithologist, in the London Spectator. "Among other things I discovered that they have a language of their own. Several times during the eight hours I spent in my shelter the parents brought food to their young.
"Long before the former got to within sight of the nest the young heard the loud call which told them food was coming. When they heard this they became very excited, ran about the nest and gave out answering cries. Twice during the day a man passed over the mountains and the parent raven on guard high over the nest, seeing him and looking upon the intruder as an enemy, uttered quite a different call.
"Instantly the three young birds threw themselves flat in the nest and remained quite motionless until they heard a third cry, which again was different from the others, which told them the coast was clear. Then they quickly jumped up and were immediately at ease."

Why Dishes Are Covered

How many persons, seeing covered dishes come to the table, have any idea of the origin of serving food in this fashion? How many know the reason that led to the covering of dishes? They were covered from fear—the fear of poison. In medieval days and down to the time of Louis XIV, people were afraid that poison might be introduced into food between the kitchen and the table. The wholesomeness of the food was first tried on the servants, who were required to taste it before any of the guests, and then if they were not poisoned, the food was all right. It did not matter so much if a servant was poisoned.

Why Blondes Are Dying Out

An authority on cultural anthropology says that in the great urban centers of Great Britain the tall blonds are dying out and are being replaced by short, dark-haired and brown-eyed people. The Nordic blond seems to thrive best in the country, and the dark peoples do best in the cities. The anthropologist predicts that, if England continues to become more and more urban, Alpine and Mediterranean folk will predominate, as they did centuries ago.—Youth's Companion.

Why Wood Rot

It is claimed that rotting of wood results from the activity of low forms of plant life which take nourishment from the wood and thus destroy it. This refutes the theory that wood rot is caused by the elements or by direct chemical action.

Why So Many Divorces

Nearly half of the divorces granted in London courts in 1923 resulted from childless marriages. Divorced for couples without children numbered 1,266 out of 2,834 cases.

Very Sick

"My lawyer," stated a European tenor, "he writes me that my contract is sick."
"Is he? How do you mean sick?"
And the tenor pointed to the word "lavalid."

Quite

Belle—Grace was arguing with Edith about some field sport.
Nell—Soccer?
Belle—Merely, no! That would be unladylike.—Allston Recorder.

ORCHARD GLEANINGS

GIVE BUDDED TREE CARE UNTIL FALL

Nursery trees budded last fall will require careful attention until next fall, according to Prof. M. J. Heppner of the University of California. He gives the following suggestions regarding care of budded stock:

"The original seedlings should, by this time, have been topped off about one-quarter to one-half inch above the bud inserted in the fall. This topping causes a heavy growth to be thrown out from the stock, and in order to give the growing bud a chance to make all the growth it should make, all growth with the exception of that from the bud itself should be removed. This will necessitate going through the nursery several times and removing this undesirable growth. In order to divert all the tree energy into the growing bud, it is best to remove the suckers as fast as they form. The stock will continue to throw out this growth until the growth from the inserted bud is large enough to take care of all food sent up from the roots. Incidentally, as the shoot grows the trunk is being shaded, which will check growth.

"The nursery soil should be carefully watched and if found deficient in soil moisture, water should be applied whenever necessary. Owing to the dry year, double care should be taken to keep the moisture content high enough to give the trees proper growing conditions.

"Growers raising trees which are attacked by red spiders or other pests should watch the trees and take the necessary precautions for keeping them clean. As a rule, the red spiders give more trouble than the other pests. If the trees become infested, sulphur should be applied, either as a dust or in any of the forms generally recommended for spider control.

"In order to keep weeds down, the cultivator should be used at frequent intervals. Growers following the above suggestions should have good-sized, well-matured trees at the end of the season, provided soil and climatic conditions are satisfactory."

Cover Crop in Orchard Is Sown in Midsummer

As a general rule a cover crop is sown in the orchard as soon as cultivation ceases in midsummer. When a crop is already on the soil, however, the sowing of the cover crop must wait until this field crop is removed. In some cases there are plenty of weeds on the land and this does very well as a cover without sowing anything else. On the other hand, if the soil is rather bare and particularly if the slope is such that will favor washing, something should be planted as soon as possible in order to take advantage of the fall rains for the winter.

Rye and vetch make a good combination cover crop for late planting in late August, September or even October in many sections. One orchardist has found that September 10 to 20 gives best results. If it is not particularly desirable to have a crop which will live through the winter and start growing in the spring, oats will serve the purpose well. Some of the clovers—such as sweet clover—may be also planted in late summer or early fall, as they will make a fair start and will make a good growth the following spring. The chief thing of importance is that the ground be covered as soon as possible by some plant growth which will prevent washing and will hold more or less snow during the winter.

Poisonous Sprays Will Control Apple Maggots

The apple maggot, or railroad worm, is the feeding worm of an insect which resembles a fly in many respects. The fly emerges from the ground in July, depending upon the season and locality, punctures the skin of the fruit, and lays eggs under the skin. The punctures are usually too small to be seen until the eggs hatch and the maggots start burrowing into the fruit.

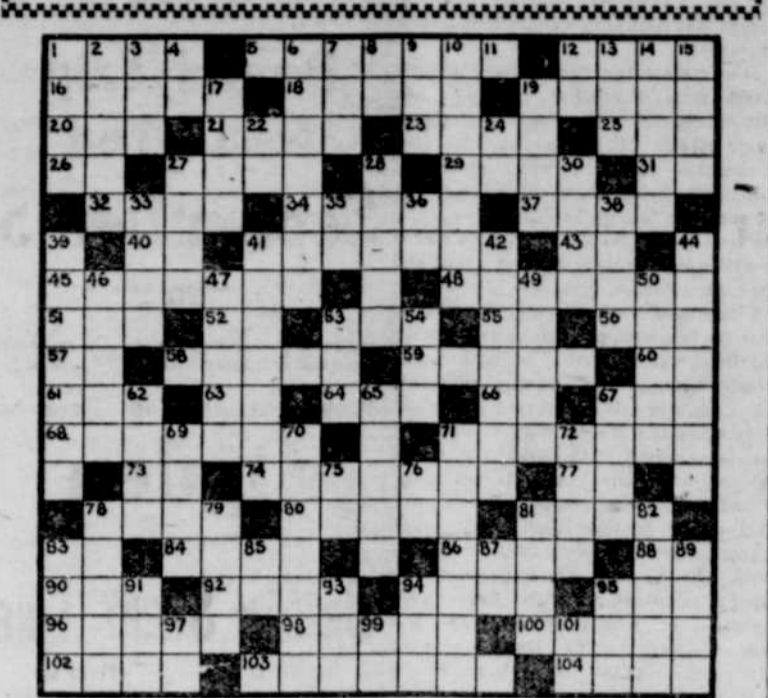
The old and common method of controlling the apple maggot was to pick up and destroy all windfalls. This prevents the maggots from entering the ground, where they pass the winter. Hogs have also been used to eat up all of these infested fruits.

It has been noticed recently, however, that the flies are easily killed by the stomach poisons contained in the regular sprays. Such poisons are eaten by the flies, when the leaves are covered with drops of moisture. Arsenate of lead, if applied in the spray mixture at the rate of two and one-half or three pounds to 100 gallons of water, about the last of July, will hold the insect in check.

Kill Peach Tree Borer

A new method has been worked out for handling the peach tree borer. This plan provides for gassing the borer. To do this paradichlorobenzene is used. This is a white crystalline substance. When placed around the infested tree and covered with dirt, it gives out a gas, which enters the wormholes and kills the borers. Three-fourths of an ounce of this material is used for a tree up to five years of age; with older trees, an amount up to an ounce and a half per tree.

CROSS-WORD PUZZLE



- Horizontal.
1—David Copperfield's first wife
2—Snows
18—Descends as condensed vapor
19—The turning member of a dynamo
20—Embankment
21—Midday
22—To be excessively fond
23—A simian
24—Verb
25—Compartments for storage
26—Burden
27—A cleansing agent
28—A standard of perfection
29—A pickle flavor
30—To attempt for "right"
31—Indented
32—Prefix meaning "joint"
33—A straw plating used in making hats
34—Computes
35—Expressing refusal
36—A beverage
37—A brief sleep
38—Outer guard (abbr.)
39—A flower
40—To supply again
41—Prefix meaning "down"
42—Molot
43—French "and"
44—An edible root
45—Abbreviation for "epistle"
46—Title of respect
47—Broke out
48—Replies
49—Exclamation
50—A chick's cry
51—Sows (verb)
52—To relate
53—In this manner
54—Wet spongy earth
55—To deserve
56—Preposition
57—To strike
58—Girl's name
59—Suff. meaning one of a party, tribe, etc.
60—Soaking
61—Girl's name (Russian)
62—One who hoards
63—Relates again
64—A standard model
Vertical.
1—A dull color
2—Fertile spots in the desert
3—Teas
4—Article
5—State of being eaten away
6—A weight
7—Preposition
8—Land measure
9—Fannier
10—Pronoun
11—Girl's name
12—Kingdom in northern India
13—To relate
14—To cut off at one stroke
15—To precede
16—Preposition
17—A receptacle for washing the body

HOW TO SOLVE A CROSS-WORD PUZZLE

When the correct letters are placed in the white spaces this puzzle will spell words both vertically and horizontally. The first letter in each word is indicated by a number, which refers to the definition listed below the puzzle. Thus No. 1 under the column headed "horizontal" defines a word which will fill the white spaces up to the first black square to the right, and a number under "vertical" defines a word which will fill the white squares to the next black one below. No letters go in the black spaces. All words used are dictionary words, except proper names. Abbreviations, slang, initials, technical terms and obsolete forms are indicated in the definitions.

FOOLISH TO WORRY ABOUT ONE'S HEART

Persons who are the surest they have weak hearts are in many cases laboring under a delusion, while the ones who least suspect it are those whose hearts need treatment. This is the opinion of Dr. William Duncan Reid, Boston heart specialist, who tells in Hygeia why heart disease heads the list in the mortality statistics.

"Many persons come to the doctor with some such list of symptoms as these—rapid heart action with pain around the heart, shortness of breath, dizziness, opposition, blue-skinned hands. That sounds like a bona fide sick heart, doesn't it? Well, it isn't. The doctors call it effort syndrome, which means that due to some disturbing factor a set of symptoms appear simulating cardiac disease although no impairment of the heart has occurred."

The only way to know if your heart is in good condition is to have a periodic examination by your doctor and not worry, says Doctor Reid.

Converse With Insects Only Matter of Time

J. B. S. Haldane, the British biochemist, says in the Forum that it's only a question of time before man will be talking with bees and ants. The investigations of Wheeler of Harvard have made it very probable that the behavior of social insects such as ants, instead of being based on a complicated series of special instincts, rests largely on an economic foundation not so very unlike our own. The ant that brings back a bug to the nest gets paid for it by a sweet juice secreted by those that stayed at home. On the other hand, a German entomologist at Kiel has been tackling the problem of how much one bee can tell another and how it does it. Tomorrow it looks as

A Salute

Bill works in a downtown office. He has a habit, when yawning, of indulging in a good stretch, which brings the arms above the head in a wave-like motion. He was visibly embarrassed a few days ago when a business caller at another desk in the office noticed the wave-like motion of the arms, and, thinking the salute was intended for him, responded with a similar salute. The stranger, leaving the building, was asked by a friend who the man was that waved at him. "I never saw him in my life, but he evidently knows me."—Indianapolis News.

"Jinx" in Numbers

Many famous men have had a dread of some particular number, and in numerous instances this has actually played a remarkable part in their lives. Wagner was dogged by 13. So was Rossini. His antipathy to the odd number was mainly owing to the fact that he composed the "Barber of Seville"—which was hissed on its production in 1816—in thirteen days. The date of his death was November 13, 1868.

LIVE STOCK

FLUSHING EWES TO INCREASE LAMBS

Those who have ewes to breed this fall may well be thinking about getting them in good physical condition before the mating time arrives. It is a well-known fact that when ewes are in a gaining condition at the time of breeding that the lamb crop will not only be larger, but the individual lambs will also be stronger and healthier. Putting ewes in a gaining condition is spoken of as "flushing" them.

Some years ago the United States Department of Agriculture carried on a number of tests with flushing ewes just before the breeding season and came to the conclusion, after six years of experimentation, that flushing increases the lamb crop about 20 per cent. The Kansas experiment station calls attention to lambs it has secured in tests with 17 groups of ewes. The ewes that were not fed grain during the breeding season gained about 1.7 pounds per head and had a lamb crop of 119 per cent, whereas those that received one-half pound of grain a day prior to breeding gained 8 pounds per head and had a lamb crop of 147 per cent. In other words, on that basis every hundred ewes that were flushed produced 28 more lambs than those that were not liberally fed prior to breeding. It isn't so important that a ration of a definite composition be fed. Any good feed that will cause the ewes to gain in flesh will turn the trick. A good bluegrass or alfalfa pasture without grain is all right.

A very good grain ration, however, is composed of one-third part by weight of corn, oats and bran. One-half corn and one-half oats will also make a good ration or oats alone will do very well indeed. Nor should a great deal of grain be fed. One-half pound per day per head is usually enough, although ewes that are in a run-down condition will do better if fed as much as three-fourths of a pound per head per day for a period of 14 to 18 days before breeding.

There are other advantages in flushing the ewe flock aside from getting a larger and stronger crop of lambs. Flushing tends to cause the ewes to come in heat. Thus the flock can be bred in less time and the lambs will come within a range of about two weeks of each other. A short lambing season in the spring is preferable to a long season because it lessens the labor of caring for the youngsters. Besides, as the lambs grow up they will be more uniform in size, which is an advantage when running together in one flock. They will also be ready for the market at the same time and practically all will be uniform as to weight when sold. These are factors of considerable importance.

Avoidable Waste in Hog Raising in Kansas Huge

"Kansas raises four hogs per litter and eight pounds of pork per bushel of corn," said Dr. C. W. McCampbell, head of the animal husbandry department at the Kansas State Agricultural college. In his talk before the Kansas swine breeders' associations.

"Kansas can raise eight hogs per litter and 16 pounds of pork per bushel of corn," he continued. "Kansas loses more hogs than she raises. For every four pigs raised nine are farrowed. About 88 per cent of the deaths may be traced directly to the farmer. It may be due to neglect or to ignorance. In either case it can be avoided with a reasonable amount of care and precaution.

"Poor management can be superseded by good management. Poor feeding can be avoided by a study of what types of food a hog must have, what proportions it should have, and how these qualities can be obtained satisfactorily and economically.

Live Stock Hints

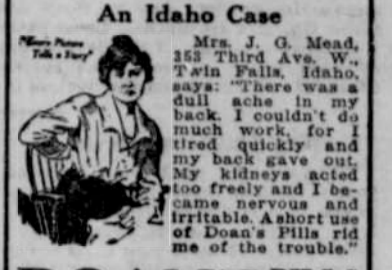
- Don't let animals go thirsty.
Breed ewes for early spring lambs.
Don't allow dairy cows and laying hens to become fat.
Don't feed animals of different ages and sizes in the same pen or lot.
Plan to show your hogs at the county and community fairs.
It is not advisable to pasture sheep and hogs together in a small pasture.

When the ewes are turned out of the individual pens, those with twin lambs should be kept separate from those with only one lamb.

The rugged, stretchy, growthy, fast-growing, heavy-boned, deep-bodied, big-type hog is best for pork-production purposes.
The feeding of too much grain, especially corn, is very apt to cause the sows to take on flesh rapidly, and produce a sluggish condition of the system.

Why Risk Neglect?

Are you lame and aching; weak and nervous? Do you suffer backache, sharp pains, disturbing bladder irregularities? This condition is often due to a slowing up of the kidneys. The kidneys, you know, are constantly filtering the blood. Once they fall behind in their work, poisons accumulate and undermine one's health. Serious troubles may follow. If you have reason to suspect faulty kidney elimination, try Doan's Pills. Doan's are a tested diuretic, recommended by thousands. Ask your neighbor!



DOAN'S PILLS 60c
STIMULANT DIURETIC TO THE KIDNEYS
Foster-Milburn Co., Mfg. Chem., Buffalo, N. Y.

Farm Buildings Valuable

According to the last federal census the value of all farm buildings in the United States is placed at \$11,484,439,543 and the average per farm is \$1,781. The state of Iowa leads all others with a valuation of \$922,751,713 and an average of \$4,323. In the District of Columbia the average is \$6,067, the total being only \$1,421,221, however.

Patriotic Maharajah

Among the gifts during the war by the maharajah of Gwalior, who died recently in Paris, were forty ambulances and a fleet of cars to England and three months' supply of cigarettes for all Indian troops in France.

Farmers Attention!

Buy Your Car Now Save Money

We have 75 automobiles that must be sold NOW without regard to profit. Any make you want—new or used. Trucks of all kinds. Priced to sell on sight. Write us today for complete details of any make car you want.

Inland Finance Co.

Box 326 Ogden, Utah

Truckers and Dairy Farmers

Wayne County with its wonderful soil and climate, long seasons, mild winters, cheap lands, splendid churches and schools, and excellent transportation facilities, invites you to locate here. A great boom is headed our way. Act at once. Write

WILCOX STUDIO

122 1/2 So. Main St. Salt Lake City

L. D. S. Business College

SCHOOL OF EFFICIENCY
All commercial branches. Catalog free.
60 N. Main St. SALT LAKE CITY, UTAH

BOOKS

Any book you want —by mail, C. O. D.
Deseret Book Co.
44 East So. Temple, Salt Lake City, Utah

Women in High Positions

The government in France has recently decided that women shall be eligible for the highest positions in the postal and telegraph service in that country. In future, women may rise to be office chiefs, managers, inspectors, etc., and they will thus figure in all the promotions of one of the most important of the government departments.

Cuticura Soothes Baby Itches

That itchy and burn, by hot baths of Cuticura Soap followed by gentle anointings of Cuticura Ointment. Nothing better, purer, sweeter, especially if a little of the fragrant Cuticura Talcum is dusted on at the finish. 25c each.—Advertisement.

Helpful Suggestion

"I'm in a quandary," she said to the milliner. "I don't know what to do about a hat. I'm of two minds about it."
"Then take two hats," suggested the milliner, "and please both minds."—Boston Transcript.

Sure Relief FOR INDIGESTION

BELLANS FOR INDIGESTION 25 CENTS
6 BELLANS Hot water Sure Relief
25¢ AND 75¢ PACKAGES EVERYWHERE
W. N. U., Salt Lake City, No. 34—1925.