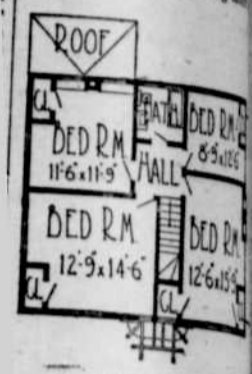


without the necessity of the living room. On the second floor bedrooms and the bathroom is a corner room. This brings the bathroom doors. For the family living or on the farm this design is a home that will accommodate a family; it is modern in appearance, and has a most superior appearance. The house is rectangular in shape, the walls, which makes the cost. This is the time in the home builders are busy and deciding on the new are many types of houses considered. The bungalow is favorite and is becoming



popular in the smaller sections; the storybook ways is in demand, as many houses of various character, after all have been here are hundreds of houses who will pick the Dutch style house they want. It is nowadays termed "class." Before deciding on the design, it always is best to consult with the material dealer and architect. The building experts can help the prospective builder in the construction and make for the cost of the home. And the amateur to make mistakes that often result in disappointment after the building a home is a step



has regretted. It is a fine thing in the bank. Is returned to the bank, but the greatest is the satisfaction and his family derive. Never too early to begin to build a home.

UT IN SECOND FLOOR

of Economics Assn. in Gu. 23 in Section of Life Partner.

honor theory that darts at random top to consider the lift of an eyelid chin, is directly challenge. Samuel N. Page of

man, a student of physics and long at the University of Kansas, writing statement in which he warns man that the woman as a g-faced woman is a sign of rounded contour. The hatchet jaw is the sign of the scheme of the ring on the marriage big-boned woman is valuable in the world and is a man's pal and as a "soft and pliable" woman customers under a rate of "development Rate", as a result of a hearing

if-faced woman is an association with a man with the law is pronounced world of modern, more aggressive, acquisitive. Both this type have individuals of the long-faced woman in the lead in the world because she is the professor frequently any other tree

RADER'S JANUARY SALES

Rader Bros. Co., Ontario, Ore., Economy Sale
OPENS JANUARY 17th AND CLOSSES JANUARY 21st, 1920

Real Snaps

28 inch drilling..... 14c
Everett Shirts..... 25c
Knit Sweaters at 1-3 and 1-4 off
Puro at..... 1-3 off
Collars at..... 1-2 price
Crickert Braid..... 12 1/2c
Knit Caps..... 1-4 off
Ladies' Handkerchiefs 4c 8c, and 10c
Fancy Hair Ribbon..... 29c and 58c
Knitted Skirts..... 89c
Misses' Skirts..... 75c

Cotton Poptins

27 inch poptin in rose, pink, blues, lavender, purple, green, khaki, cream and black. Special..... 48c

Dress Plaids

for children school dresses \$1.00 values..... 69c
75c values..... 48c

Silk Special

36 inch Fancy Silk of Skirt length or more, they are in Fancy Plaid and stripes. Special, per yd..... \$1.98

Waists

LOT 1 Crepe de Chine in pink and white \$4.75 values, Special..... \$3.25
LOT 2 China Silk, in pink white, and beige, \$3.50 values, Sp1 \$2.15

THE WISE BUYER WILL TAKE ADVANTAGE OF THESE BARGAINS

COATINGS

In all wool velour, of taupe, brown, plum, peacock blue, navy and black. Good values at \$4.50
Special \$3.75
Tweed Coating \$3.00 value
Special \$2.30
OTHER GOOD VALUES IN COATINGS

PERCALES

One big lot of 27 in. Percale
Special 14c
36 inch Zeplyritte Percale
Special 28c

COATS, SUITS AND DRESSES

Coats and Suits at Wonderful Reductions---Every Garment to Be Closed Out Regardless of Cost.

SERGE DRESSES 1 lot at \$13.45. 1 lot at \$15.45
SILK DRESSES 1 lot at \$16.75. 1 lot at \$19.75

OUTING FLANNELS

Heavy quality 27 in wide in stripe and check patterns
Special 25c
27 in pure white outing, Regular 20c value
Special 14c

MUSLINS

36 in bleached, regular 25c and 35c
Special 19c and 38c
45 in tubing regular 60c
Special 49c
36 IN. BROWN MUSLIN 19c

Men's Dept.

Khaki Handkerchiefs..... 9c
1 lot of Ties..... 48c
Black Sox..... 18c
Canvas Gloves..... 15c, 2 pair for 25c
Horsehide lined Gloves..... \$1.50
Muleskin lined Gloves..... 85c
Muleskin lined Mittens..... 69c
Leather Palm Mitts..... 50c
Mens Sweaters..... \$1.75
Mens Sweaters..... \$2.40
Messers Jersey Leggings..... 85c

Blankets

72x84 all wool Blankets \$20.00 values Clearance..... \$16.50
70x80 all wool Blankets, \$12.50 values Clearance..... \$10.50
64x80 wool mixed \$9.50 Special \$8.48
8.50 value, Clearance..... \$6.85
68x80 for..... \$2.65
64x76 for..... \$2.45
45x72 for..... \$1.48
72x84 Jumbo Wool Nap..... \$3.45

Crib Blanket

95c 29x39, Special..... 85c
\$1.25 30x40, Special..... \$1.05
\$1.50 36x48, Special..... \$1.28

Women's Hose

Full fashion, all Silk Hose, in Havana and black.
\$2.25 values, Clearance..... \$1.85.
\$2.00 values, Clearance..... \$1.69
\$1.50 values, Clearance..... \$1.15.
LISLE HOSE 8 1/2 and 9 only Clearance Price..... 19c
MISSSES FLEECE LINED---50c values Clearance..... 30c
75c Wool Hose, Clearance..... 59c

Crepe Plisse

27 inch, in white only, Clearance 43c yd

Night Gowns

WHITE OUTING GOWNS
\$2.25 gowns, Clearance..... \$1.98
\$2.50 Crepe, Clearance..... \$1.98
Misses White Outing Gowns at Clearance Price, 55c, 85c \$1.65.
NUMEROUS BARGAINS IN SILK UNDERWEAR.

Suit Cases

at Clearance price of \$2.25, \$2.95, \$3.98

Clean-up in Shoe Dept.

These shoes must be sold in order to make room for our new Spring Stock, which is now on the read.
LOT 1---AT \$4.85.
97 pairs of Ladies' Shoes, Gray and Brown Vamps, with cloth tops to match full Louis leather heels and good medium weight soles for street wear. All sizes, 2 1/2 to 8 B C D widths.
LOT 2---AT \$4.95.
In this lot there are about 100 prs. of Ladies' and Growing Girls' Shoes some cloth tops and some all leather tops, both high and low heels. Extra good values. All sizes 2 1/2 to 8.

LOT 3---AT \$2.45 and \$2.95
150 pairs of Misses' and Children's Shoes, Gun metal, Patent and Kid leather, Button and Lace. In this lot there are all sizes and they are extra good values at regular price. Will be sold at this sale as long as they last. 8 1/2 to 11 at \$2.45
11 1/2 to 2 at \$2.95.
LOT 4---AT \$2.45 and \$2.95
In this lot there are about 100 prs of Boys' and Little Gents Shoes, made of good solid Gun Metal leather with good heavy soles. Comes in button and lace. Sale price 9 to 2 at \$2.45 2 1/2 to 6 at \$2.95
LOT 5---AT 5.45
85 pairs of Men's Army Work Shoes brown and tan, with good welt soles. All sizes 6 to 10 Sale price\$5.45

POWER COMPANY FILES APPLICATION TO INCREASE IRRIGATION POWER RATES

The power company has filed an application with the public utilities commission for an increase in its rates for irrigation purposes. The present rate is inadequate to cover the operating costs of the company. The commission is arranging to hold a series of hearings so that the public may understand the financial situation. The company has written letters to its customers laying out the reasons for asking for a rate increase. The company's letter, signed by J. C. O'Connell, division manager, is as follows: "The Idaho Power Company has been serving its customers under a rate of 'development Rate', established as a result of a hearing held in Boise in October, 1915, which rate was made effective for the seasons of 1916 and 1917, and was continued, by agreement, for the seasons of 1918, and again for the season of 1919, and which development rate, when established, was understood by all concerned to be a temporary expedient only. Since that time, the rate of way of the Idaho Power Company, on its employees has increased 66 per cent; the cost of supplies which it uses in operation have increased 80 per cent; its taxes on that portion of property then in existence have increased 146 per cent; the costs of construction have increased over 80 per cent, and the costs of money have increased more than 20 per cent. Manifestly, a rate adopted in 1915 as a development rate and, therefore, a rate not sufficient to pay its costs of service, must be now entirely inadequate, since all items entering into the cost of service have increased more than 60 per cent during this period. Due to the material increase each year in acreage irrigated by the pumped water, there has been a constant growth in the amount of power required for this purpose, which has required the Power Company to spend large sums of money so as to provide the service needed for pumping water for irrigation. During the years 1920 and 1921, we will be required to spend approximately \$75,500.00 for irrigation purposes alone if we are to continue to furnish service for this purpose. Under the Utility Laws regulating the operations of public utilities of this country, a utility is allowed only to receive from its customers sufficient money to pay its operating expenses, including taxes, to provide sufficient money to keep the property in good condition to serve its customers, and to pay a reasonable rate of return on the money actually invested. Consequently, all new construction work must be paid for by money borrowed for the purpose. In order to secure this money from the investors in this class of securities, it is necessary to offer ample security in the way of property and continued earnings at a rate which will pay the operating expenses and provide the funds for keeping the property in good condition, as well as to provide the money necessary to pay interest on the funds thus borrowed. We are now trying to secure the money to take care of the construction expenditures for 1920 and 1921, and have been informed by investors in utility securities from whom this money has to be secured that, as long as our losses on our irrigation business are increasing each year, it is not advisable for us to continue with this business, and that before we can secure additional funds for this type of construction work, we must have rates for irrigation pumping that will provide that our irrigation customers pay us one dollar each year for each dollar that we spend that year on their service. During 1919 we received \$337,459.00 from irrigation customers. Our operating expenses, including taxes, for this business alone were \$230,646.00. Our investment costs, including depreciation and interest on the money, were \$332,500.00, making a total cost of \$563,146.00, and thus we are short \$225,687.00 of paying the annual interest and depreciation on the investment used only by our irrigation customers. In other words, for each dollar that we spent during the year 1919 on irrigation business, our irrigation customers paid us 60 cents. With the increased construction costs, the conditions in 1920 and 1921 will be worse. As near as we can estimate, if the present rates continue, our irrigation customers will pay us 57 1-2 cents in 1920 towards dollar that we spend for them, and 56 1-2 cents in 1921. We are of the opinion that the fundamental industry of southern Idaho is irrigation and that everything that can possibly be done to lighten the burden of irrigation costs should be done, and, consequently, in apportioning our investment and our operating costs, we have, in every possible way, favored the irrigation business in such apportionment. On the other hand, we do not believe that our irrigation customers desire to have service continued at a loss to the company serving them, as they well realize that, if this action of the country is to be prosperous, all concerns doing business in his territory on a legitimate basis should re-

ed more than 60 per cent during this period. Due to the material increase each year in acreage irrigated by the pumped water, there has been a constant growth in the amount of power required for this purpose, which has required the Power Company to spend large sums of money so as to provide the service needed for pumping water for irrigation. During the years 1920 and 1921, we will be required to spend approximately \$75,500.00 for irrigation purposes alone if we are to continue to furnish service for this purpose. Under the Utility Laws regulating the operations of public utilities of this country, a utility is allowed only to receive from its customers sufficient money to pay its operating expenses, including taxes, to provide sufficient money to keep the property in good condition to serve its customers, and to pay a reasonable rate of return on the money actually invested. Consequently, all new construction work must be paid for by money borrowed for the purpose. In order to secure this money from the investors in this class of securities, it is necessary to offer ample security in the way of property and continued earnings at a rate which will pay the operating expenses and provide the funds for keeping the property in good condition, as well as to provide the money necessary to pay interest on the funds thus borrowed. We are now trying to secure the money to take care of the construction expenditures for 1920 and 1921, and have been informed by investors in utility securities from whom this money has to be secured that, as long as our losses on our irrigation business are increasing each year, it is not advisable for us to continue with this business, and that before we can secure additional funds for this type of construction work, we must have rates for irrigation pumping that will provide that our irrigation customers pay us one dollar each year for each dollar that we spend that year on their service. During 1919 we received \$337,459.00 from irrigation customers. Our operating expenses, including taxes, for this business alone were \$230,646.00. Our investment costs, including depreciation and interest on the money, were \$332,500.00, making a total cost of \$563,146.00, and thus we are short \$225,687.00 of paying the annual interest and depreciation on the investment used only by our irrigation customers. In other words, for each dollar that we spent during the year 1919 on irrigation business, our irrigation customers paid us 60 cents. With the increased construction costs, the conditions in 1920 and 1921 will be worse. As near as we can estimate, if the present rates continue, our irrigation customers will pay us 57 1-2 cents in 1920 towards dollar that we spend for them, and 56 1-2 cents in 1921. We are of the opinion that the fundamental industry of southern Idaho is irrigation and that everything that can possibly be done to lighten the burden of irrigation costs should be done, and, consequently, in apportioning our investment and our operating costs, we have, in every possible way, favored the irrigation business in such apportionment. On the other hand, we do not believe that our irrigation customers desire to have service continued at a loss to the company serving them, as they well realize that, if this action of the country is to be prosperous, all concerns doing business in his territory on a legitimate basis should re-

Bring Your Prescriptions Here--- We take special pains in the handling of our prescription orders.

Foster's Drug Store

Nyssa, Oregon

STOP A MOMENT

YOU who are without Telephone Service; compare its daily cost to you with many other things you buy each day. We believe you will find that it will save you money. Try it.

Malheur Home Telephone Co

(Continued on Page Four.)

can print anything you want from one inch square to 22x30---get your job printing done at this shop

The Gate City Journal