

# Board of Commissioners

(Memorandum Minutes)

The Columbia County Board of Commissioners met in regular session July 3, with Chairman Fred Foshaug presiding, Commissioners Minkoff and Ahlborn, and Secretary Gloria Salvay (deputy clerk) present.

Commissioner Minkoff moved and Commissioner Ahlborn seconded the minutes of the Budget committee from April 22-May 8, and the minutes of the Board of Commissioners meeting of June 26, and the minutes of the special meeting June 28, 1974 be approved. Motion carried.

Miscellaneous claims were approved. Sam Hollinger met with the board to discuss various road department matters. He indicated discussion with Mr. Vardenberg were favorable regarding obtaining right of way on Tarbell Road. The board indicated it would relay the matter to John Hunnicutt, legal-counsel, to follow through on the right of way acquisition.

Hollinger also discussed the acquisition of right of way on Cannon Road to repair a slide. This matter was also to be referred to Hunnicutt.

Commissioners Foshaug and Minkoff discussed with Commissioner Ahlborn and Hollinger visits to the park, and viewing of the restrooms, subsequent to Hollinger's report about them being dirty. Commissioner Ahlborn indicated he had previously discussed this with Mr. Flock, and suggested a letter be sent to him reprimanding him for neglect, and indicating that unless the condition were corrected, he would be subject to dismissal.

Commissioner Minkoff moved and Commissioner Ahlborn seconded Order No. 76-74 be signed, appointing Richard C. "Tom" Tamm as Tax Collector for Columbia County, effective July 1, 1974. Motion carried.

Certificate of Appropriation of Funds was signed, for the Extension Service, Oregon State University, certifying the appropriation of 123,944 for the local Extension Office for the fiscal year beginning July 1, 1974.

Commissioner Minkoff moved and Commissioner Ahlborn seconded Order No. 75-74 be signed transferring jurisdiction of Columbia County over certain streets in Rainier to the City of Rainier. Motion carried.

At the request of the City of St. Helens, Commissioner Minkoff moved and Commissioner Ahlborn seconded an Order and Easement be signed for a sewer line easement affecting Lot 2, Block 76, City of St. Helens. Motion carried.

An Order and Deed were signed conveying Lot 5, Block 103, City of St. Helens, to Vivian S. Himmel.

An Order and Deed were signed conveying Lots 9 and 10, Block 20, City of St. Helens, to W.A. Kumpula.

Notices of acceptance of appointment were received from Orville Gilkey (Park Commission) and Dorothy Eggleston (Public Welfare Board).

Sitting as the Dog Control Board, a claim submitted by Esther Monson, for three sheep killed by dogs was approved for \$75.

Certificates of Appointment were approved as follows: Fred Roediger, Chief Deputy Sheriff; Ernest Thompson, Deputy Sheriff; Bruce Oester, Deputy Sheriff; Jimmie Cavanaugh, Deputy Sheriff; Larry Nelson, Deputy Sheriff; Edith Aspgren, Deputy Sheriff; Joyce Burghart, Chief Deputy Tax Collector; Deloris McKinstry, Deputy Tax Collector; Helen Tupper, Deputy Tax Collector; Mildred Sherburne, Deputy Tax Collector.

Commissioner Minkoff moved and Commissioner Ahlborn seconded Resolution Adopting Budget, and Notice of Tax Levy, be signed, adopting the budget and assessing the taxes for Meadowview Service District SDL-1 for the 1974-75 fiscal year. Motion carried.

Commissioner Minkoff moved and Commissioner Ahlborn seconded Resolution Adopting Budget, and Notice of Tax Levy, be signed, adopting the budget and assessing the taxes for Columbia County, for the 1974-75 fiscal year. Motion carried.

Surfacing Mining Permit Taxes in the sum of \$653.26 to the Church of Jesus Christ of Latterday Saints was approved, resulting from 1973 Legislation exempting the property from taxation for the 1972-73 fiscal year.

Request for Cancellation of Taxes in the sum of \$801.43, for the Loyal Order of Moose, St. Helens Lodge No. 591, was signed, resulting from tax exemption allowed by the Department of Revenue.

An Agreement was signed with Portland General Electric Company, granting PGE right to enter on county lands in event of radiation emergency at Trojan Nuclear Plant.

More than half the pedestrian traffic deaths in the U.S. happen between 6 p.m. and midnight, cautions the Allstate Motor Club. Many of the annual pedestrian fatality toll of some 10,000 are children who dart into the street without thinking at a time when seeing them is difficult.

# Food For Later

by

Carol A. Ashley  
Extension Agent

Last year many families put up so much canned and frozen food they will be unable to eat it by the time the new crop is harvested. Although preserved foods may be safe to eat after the first year, there are reasons to avoid preserving much larger quantities.

Quality of preserved foods decreases slowly with age. Nutritive values decline gradually. Extra jars, lids or other reusable packaging materials for food kept longer than one season mean unnecessary costs. Storage space required for the extra food might be used for other purposes.

Questions this week reflect the concern for advanced planning, as well as typical canning problems.

Q. Is there a way to plan in advance for the amount of food to preserve?

A. Figure that there are about 36 weeks you will use preserved fruits and vegetables assuming they are available fresh for 16 weeks of the year.

Take fruit for example. Multiply the number of times a week you serve fruit times 36 weeks. Divide this total number of servings by 8 to get the number of quarts needed per person assuming each serving will be about a half a cup in size. Multiply the number of quarts by the number of family members to get an estimate of the total number of quarts to be frozen or canned for the year.

You can figure the amounts of vegetables, pickles, meats or any other foods to preserve using the same method of figuring.

Q. How can I prevent fruit from floating at the top of the jar?

A. Fruit floats when the fruit is lighter than the syrup. Use firm ripe fruit. Using the hot pack method removes air, which helps prevent floating. Use light or medium syrup in place of heavy syrup. Pack fruit as closely as possible without crushing it.

Q. How can I salvage canned fruit and vegetables that didn't seal?

A. You have three choices: refrigerate and use within a few days; freeze; or process the food again.

If you reprocess the food, check the jar rim and lid for defects or food particles that caused the problem. Process for the full time. The product will be overcooked, but safe.

Q. Last year I had problems with canned fruits and vegetables that didn't seal. What did I do wrong?

A. Many factors can contribute to the problem. Check out these points: Did you follow exactly the directions for using the screw bands and lids? Did you use new lids and screw caps that are in good condition? Was the correct amount of head space left? Were air bubbles "knifed out" before sealing jars? Did jar rims have nicks or food particles on them?

Q. Is it safe to process food in the oven?

A. No, oven canning is dangerous. Jars may explode. The temperature of the food in jars during processing does not get high enough to insure destruction of spoilage bacteria in vegetables.

Q. My mother always canned in the open kettle method. A neighbor says this is not safe. Why?

A. In open kettle canning, food is cooked in an ordinary kettle, then packed into hot jars and sealed without processing. For vegetables, the temperatures obtained in an open kettle are not high enough to destroy all the spoilage organisms that may be in the food. Spoilage bacteria may get in to any type of food when the food is transferred from kettle to jar. To obtain reliable canning directions, contact your county extension office.

Q. My uncooked strawberry jam didn't set up. What causes this? Is there a way to get it to set up now?

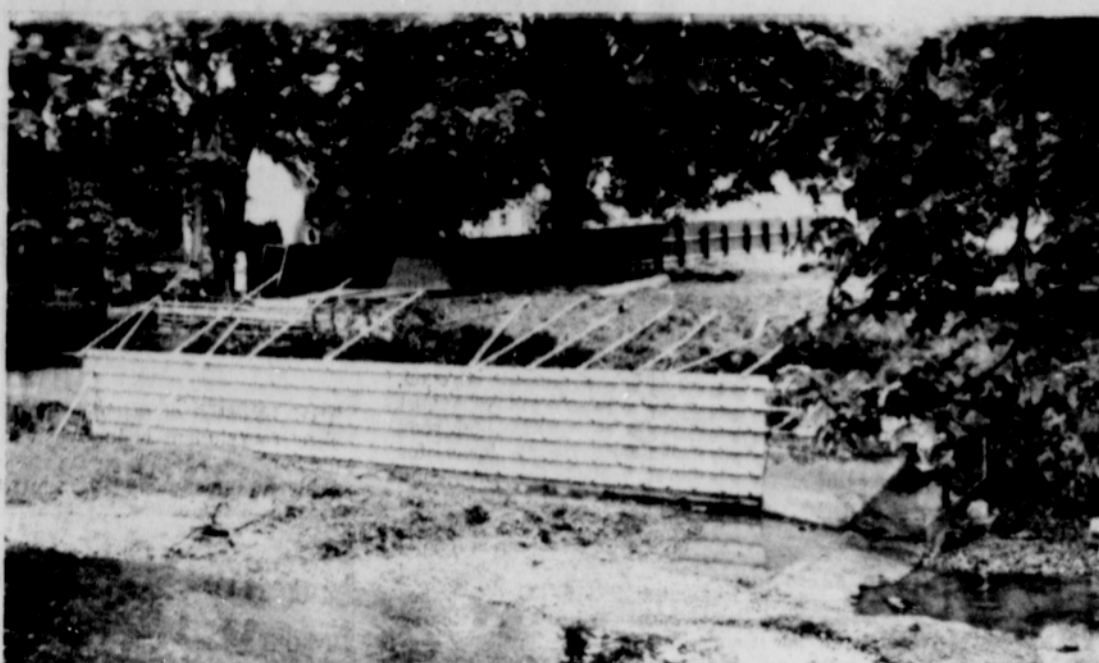
A. It is critical for the pectin to be dissolved and thoroughly mixed with the fruit. Be sure to follow directions exactly when making jams and jellies. If the jam is too soft, bring it to a boil; it will thicken upon cooling.

# Fir Seedlings Planted By IP

More than 650,000 Douglas fir seedlings have been planted during the recently concluded reforestation season in International Paper Company tree farms in Southwest Washington and Northwest Oregon.

Several areas of IP's Long-Bell Division forest lands at Ryderwood, Wash., and Vernonia and Grand Ronde, Ore., have been planted in a single-season program which began last December. Reforestation in these woodlands included some 1,800 acres of tree farm lands. The program was concentrated in areas of recent logging and in previously unstocked sites.

In all IP woodlands on the West Coast, 1.8 million trees were planted this season on more than 6,300 acres. This raises the total acreage reforested by IP on the West Coast since 1971 to 32,000 acres.



WORK ON the retaining wall at the local swimming pool continues despite the winter-like weather. Tuesday they began pouring the cement that will assure swimmers and parents of the walls durability.

# Speaking To the Consumer

Marilyn Lunner  
Extension Family Finance Specialist  
Oregon State University

Consumer gains. Day-to-day dealings of consumers with public utility companies will be affected by new regulations issued by the Oregon Public Utility Commission. Effective July 1 each utility company must pay six percent interest per year on the cash deposit required for service connection. The utility shall automatically refund deposits plus interest accrued if service is discontinued of after 12 consecutive billings without

having more than two delinquent payments.

Saving for emergencies. An emergency fund—money that is quickly accessible to the family if illness strikes or the breadwinner loses his job—is recommended for all families. But how large should the fund be?

It used to be the equivalent of six months' income, but times are changing. Families that now have unemployment insurance,

health insurance and disability insurance may choose to retain only two months' income in an accessible savings account to cope with an emergency, putting their additional savings in higher paying investments.

Waxy Glass? Motorists should clean both wipers and windshield after a liquid wax application, suggests the National Highway Traffic Safety Administration. They report that the wax combined with rain or road grime can make the windshield nearly opaque and can be a hazard in driving. Remove the wax with a window cleaning product or a mixture of detergent and alcohol, then rinse away.

# Senior Citizen News - - -

After a short Holiday we are back at work again. A load of papers has been delivered and we are starting on another.

We had an enjoyable Potluck dinner Friday which nearly 30 attended. Lots of good food and good fellowship.

Several new memberships have come in and renewals are the order of the day. Our year begins in July so we ask our old members to check their cards to see if they are in arrears.

Word from the Ecklands is that they are having a good time in spite of the Nebraska heat. We all miss them.

Thanks to all who keep us supplied with papers. And thanks to the faithful ones who come and roll. Salvage of glass, tin and aluminum is proving profitable too. Please bring clean glass with labels removed and tin flattened and free of labels.

SHOP AT HOME

# VETERANS SERVICE OFFICE

Old Courthouse Basement  
ST. HELENS, OREGON

Phone 397-2268 — After Hours 397-1730

Monday - Wednesday - Thursday  
9:30 a.m. to 12 Noon

**Sentry Markets - where you'll see miles of smiles!**

## Beef Round Steak

\$1.19

GRADE A HINDQUARTER Turkey Roast **39¢** LB.

**veveeta** \$1.29 (2 LB CTN)

**Gold n' Soft** 2/89¢ (1 LB TUB)

**BEEF FOR STEW** \$1.19

**BEEF ROUND TIP ROAST** \$1.49

**LEAN CUBES** \$1.19

**LEAN GROUND BEEF** \$1.09

**SLICED BACON** 69¢

**SOLE FILLETS** \$1.39

**REGULAR WIENERS** 59¢

**CROWN FLOUR** \$1.19

**BISQUICK MIX** 69¢

**GROUND COFFEE** \$2.99

**INSTANT COFFEE** 1.49

**Grated Tuna** 3/\$1

**BARTLETT PEARS** 3 for \$1

**FRESH EGGS** 00¢

**FACIAL TISSUE** 3 for \$1

**COCOA MIX** 79¢

**POTATO CHIPS** 57¢

**INSTANT COFFEE** \$1.39

**MARGARINE** 69¢

**CHUNK CHEESE** 79¢

**SHARP CHEESE** 88¢

**INSTANT TEA** \$1.39

**BACON BITS** 75¢

**SALAD SUPREME** 53¢

**NUTTER BUTTERS** 55¢

**WHITE RICE** \$1.09

**SWEET 10** 95¢

**FURNITURE WAX** \$1.19

**PAPER CUP REFILL** 49¢

**VERNONIA SENTRY**

PRICES EFFECTIVE JULY 11, 12 & 13

**COKE CANS** 6-Pack (Plus Dep.) \$1.19

**BUFFERIN TABLETS** 99¢

**LISTERINE MOUTHWASH** \$1.75

**ARRID Deodorant** \$1.09

**BUTANE LIGHTER** 99¢

**BROMO SELTZER** 77¢

**RAZOR CARTRIDGE** 99¢

**COLGATE Toothpaste** 79¢

# Vernonia Eagle

THURSDAY, JULY 11, 1974 7

# Trip Enjoyed By Crawfords

MIST—Mr. and Mrs. Dave Crawford drove to Victoria Vancouver Island on Wednesday of last week. They visited her relatives at Vancouver while there. They returned home Sunday evening.

Mr. and Mrs. Eldon Shelter and family spent the 4th at the beach at Astoria.

Mr. and Mrs. Norman Hanson spent the 4th in Clatskanie.

Mrs. Walter Mathews visited Mrs. Julie Wiester on Monday of last week.

Mr. Martin Hanson took his wife out to dinner at Longview on the 4th. They were met there by the Ramsik family and all enjoyed dinner together.

Mr. and Mrs. Russel Stuve and daughter Betsy of Beaverton, visited Sunday at the Roy Kyser home.

Mrs. Walter Mathews and Mrs. Robert Mathews visited Mr. and Mrs. Noble Dunlap on Wednesday of last week and on Sunday Mr. and Mrs. Walter Mathews visited them.