

HERE'S VALUE

CHAIN LINK FENCING

These outfits cost 6% to 10% less than our popular Chieftain® Chain Link Outfits in our Big Book but you get the same fabric gauge and quality . . . only difference is top rail has sleeve-connected ends instead of slide-together ends

73c per foot
36 inches high
Terminal posts sold separately

Outfits include: 11-ga. galvanized 2½x2½-inch mesh fabric; 1½-inch O.D.* (outside diam.) top rail and sleeves; 1½-inch O.D.* line posts (none furnished with 10 ft. or less of fencing); aluminum loop caps; tie wires. Order outfits from chart below. Order posts and gates separately below.

End or Gate Posts		Corner Posts	
Hi. in.	Catalog Number	Weight	Price
36	13 TP 9860N	11 lbs.	\$4.45
42	13 TP 98601N	12 lbs.	4.95
48	13 TP 98602N	13 lbs.	5.45
60	13 TP 98603N	15 lbs.	6.45
36	13 TP 98605N	13 lbs.	\$5.95
42	13 TP 98606N	14 lbs.	6.75
48	13 TP 98607N	15 lbs.	7.35
60	13 TP 98608N	19 lbs.	8.90

Height	Width**	Catalog Number	Weight	Price
36 inches	3½ feet	13 TP 18215N	12 lbs.	\$14.95
42 inches	3½ feet	13 TP 18216N	20 lbs.	16.25
48 inches	3½ feet	13 TP 18217N	22 lbs.	17.45
60 inches	3½ feet	13 TP 18218N	26 lbs.	19.55

Bent-frame Gates. 1½-in. O.D.* tubular steel frames. Order fittings below.

Height	Width**	Catalog Number	Weight	Price
36 inches	3½ feet	13 TP 18215N	12 lbs.	\$14.95
42 inches	3½ feet	13 TP 18216N	20 lbs.	16.25
48 inches	3½ feet	13 TP 18217N	22 lbs.	17.45
60 inches	3½ feet	13 TP 18218N	26 lbs.	19.55

Gate Fitting Sets (not shown). Include 2 male hinges, 2 female hinges and one fork latch. 13 TP 19802—Shipping weight 3 lbs. 6 oz. \$3.65

1 Automatic-close Gate Hardware Sets. Includes 2 male hinges, 2 female hinges, one automatic closer and one automatic-closer latch. 13 TP 19713—Shipping weight 5 lbs. 2 oz. \$5.10

SHPG. NOTE: "N" items (as 13 TP 9857N) sent motor carrier or express.

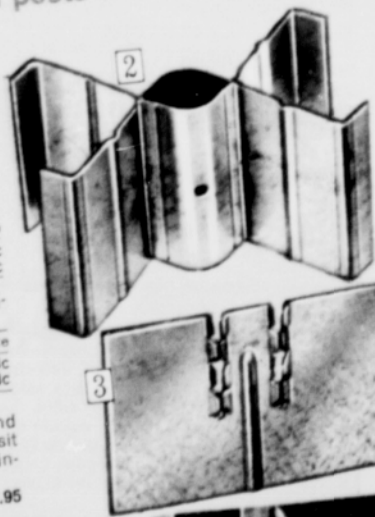
Sears exclusive Post-anchoring System lets you install your own posts without concrete

(2 and 3) Anchors eliminate the need for digging post holes and pouring concrete. Use top anchor (2) for all posts in moist soil. Use top anchor with bottom anchor (3) for gate posts and all posts installed in soft soil.

2 Top Anchor. Two locking 12x5-in. parts. Wt. 2 lbs. 9 oz.

3 Bottom Anchor. One 7½x4½-in. piece. Wt. 13 oz.

Installation Kit. Use it free and return within 60 days for deposit refund. Includes necessary installation tools. Wt. 54 lbs. 13 TP 21931N2 . . . Deposit \$37.95



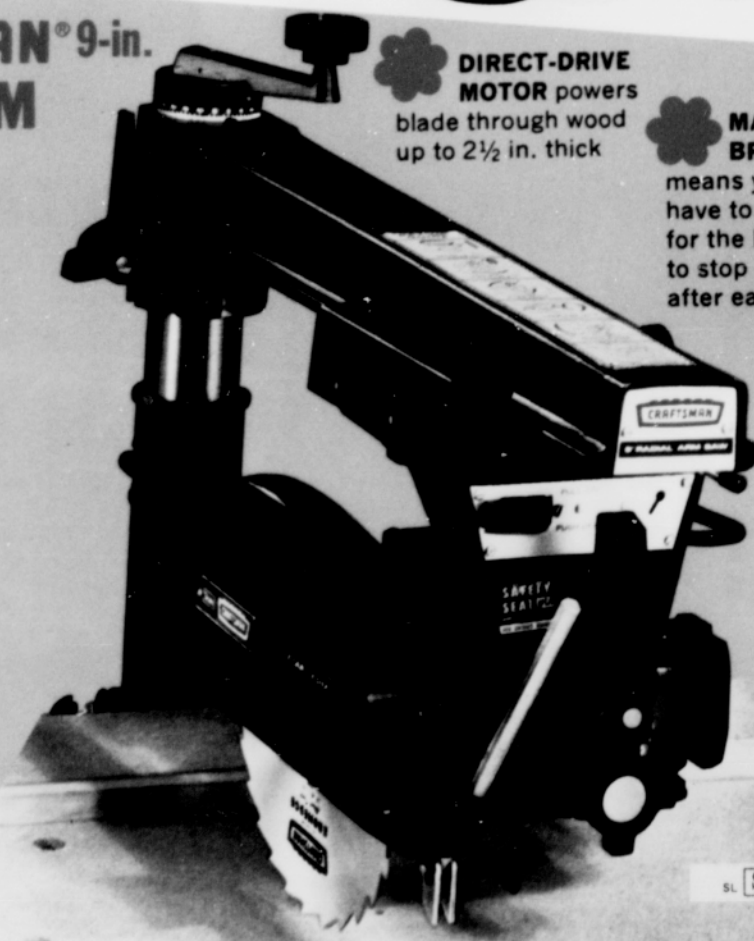
HERE'S VALUE

This CRAFTSMAN® 9-in. RADIAL ARM SAW develops a full 1¾ HP

CUT \$50
Was \$174.95 **\$124.88** with table

Capacitor-start, 3450-rpm motor with overload protector . . . no brushes or commutator to service. Pull-on, push-off switch with locking device. Carriage rolls on sealed ball bearings. Rips up to 25 in. wide, crosscuts ¾-in. wood up to 15 inches wide. Chipboard table is ¾ inch thick, provides 26x32 inches of working surface. Rugged cast-iron column, cast-aluminum arm and column support. Calibrated crank sets cutting depth. Single yoke swivels motor, blade. Miter and bevel scales for accurate angle cuts. Fixed stops at center and 45° left or right; bevel stops at vertical, horizontal and 45°. Anti-kickback pawl. Shaft with ¾-inch arbor and ½-inch x 20 thread accessory end. Kromedge® blade. 110-120-volt, 60-Hz. AC. UL listed.

9 TP 2934N—Shipping weight 100 pounds \$124.88



DIRECT-DRIVE MOTOR powers blade through wood up to 2½ in. thick

MANUAL BRAKE means you don't have to wait for the blade to stop spinning after each cut

Seldom will you find a 1½-HP Electric SPRAYER-COMPRESSOR priced this low

HERE'S VALUE

POWERFUL ENOUGH FOR BIG HOME AND FARM PROJECTS . . . delivers 6.1 SCFM* at 40 PSI . . . 100 PSI maximum**

BIG 20-GALLON AIR TANK cuts compressor work load

CUT \$30
Was \$239.95 **\$209.95**

Operates most air tools and 2 spray guns at once; air-cleans machinery; inflates tires. Powerful motor starts load-free; manual overload protector helps guard against burnouts. Bleeder, non-bleeder type spray gun converts from pressure to siphon feed, from internal to external mix. For fast or fine finish painting . . . with slow or fast-drying liquids. 1-quart paint cup. See paint tank in Big Book for big spraying jobs. Vertical fins cool compressor. Rugged ductile-iron crankshaft. Sturdy needle bearings. Positive shut-off, check and safety valves; line and tank gauges; pressure regulator, 10-in. heavy-duty tires; 8-ft. cord. We also include a wrench, air chuck, 15 feet of ¼-inch rubber and rayon air hose, how-to-power-spray book. Needs 220-240-v., 60-c., AC and 15 amps. electrical supply. 42x12x30 in. high.

30 TP 17968N—Shipping weight 170 pounds \$209.95

NOTE: Unit cannot be used in New Jersey and Oregon in compliance with state laws. See ASME (American Society of Mechanical Engineers) models in Big Book if you live in those states.

*SCFM (standard cubic feet per minute) **PSI (pounds per square inch)



WORKS ON 220-240-VOLTS
Plugs into this outlet