

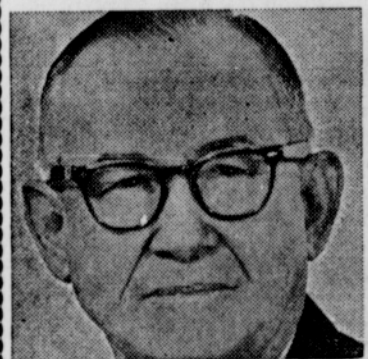
## Letter to the Editor

I see where the Democratic candidate for County Judge, according to his placards, advocates a "time for a change". . . He fails to explain what his change would do for Columbia County . . . A change from what? . . . To what? . . .

He exposed his hand at the meeting of the Democratic Central Committee meeting held at Vernonia, September 8 . . . His hand of complete incompetence and irresponsibility . . . Incompetence in that he has not informed himself with the duties of his aspired office . . . Irresponsible in that he intimates that if he were in office he would publicly reveal the confidence of his office to the people . . . His point was that Judge Whipple, acting individually, was pricing various parcels of property without the people of Columbia County being advised as to what is going on . . . Every coffee cup in the County, bubbles over with conjecture concerning our imminent industrial development and this man cannot understand that the reality of this development can only come about through the maintenance of confidence . . . To follow the blind judgement of the Democratic candidate would nullify all the hope of a "progressive" future for Columbia County . . . Columbia County presently sits on a bright horizon of progress . . . To assure our proper place in this future the retention of John Whipple as County Judge is vital . . .

To the Republicans, and most importantly to the Democrats of our County, I appeal to you, to continue to favorably support bi-partisan politics in the same spirit as did President John F. Kennedy, Lyndon B. Johnson, and the late beloved Speaker of the House, Sam Rayburn . . . These men, as most great men do, advocated and practiced bi-partisan politics . . . Kennedy, Johnson and Rayburn, each, has proclaimed himself, A FREE MAN, AN AMERICAN, a man loyal to his state, and then a Democrat . . . A Democrat only fourth . . . And rightly so if the principles of this great Republic are to be preserved . . . These men made appointments heavy with Republicans to "KEY" posts: Dillon, Treasury; McNamara, Defense; McCone, Intelligence; Bill Martin Jr. was retained as member of Federal Reserve Board; Herter, in charge of tariff negotiations; and in the center of high policy making in the White House itself, President Kennedy placed, McGeorge Bundy . . . It is very vital to Columbia County to follow the example of these great leaders and Americans,

### Is Columbia County's business big business?



#### It certainly is!

It's a \$34 million municipal corporation. The man you hire as County Judge is chairman of the County Court and judge of the Probate Court. The County Court is responsible for spending several million of your tax dollars. A terrific challenge confronts the new County Court because our county is on the verge of extensive industrial development. This means new people, new homes, and new business all resulting in greater demands for county services. To cope with the many new problems this influx of population will bring you will need a man whose legal training, and experience as a county administrator is proven. A bright future awaits our county if we maintain good roads, good schools, good churches, and adequate health program and live within our income and ability to pay. There's not a county in Oregon of similar size and population that can equal our financial condition. If you favor such a program then retain Judge Whipple because he feels responsible to each of you regardless of your party affiliation.

**Vote 118 X Re-Elect  
John W. Whipple  
County Judge**

Pd. adv by C. R. Olson, Warren, Ore., Ch. Com. for Re-election of Judge Whipple.

by retaining Judge Whipple, to protect the principle of bi-partisan politics which has been so good to our country as well as Columbia County . . . Presently the County Court consists of Judge Whipple, a Republican and two Democrats, commissioners.

The issues in the local contest are not as the Democrat candidate advocates, "a time for a change" to nothing . . . For a change to take place for the sole reason that a given number of years has transpired, is in direct conflict with the principles of the labor movement and these principles have been accepted and practiced by both management and business . . . What working man in this county would consider it justice if he or his working companion were removed from his place of employment just because he had been on a particular job for a few years . . . Generally this is considered an asset both to the man and to management . . . Maybe in the cleaning business a man might wear out and lose his competence and value to the craft, but in other fields, such as education, science, business, the labor movement or in the home, time and experience means competence and the ability to produce effectively and harmoniously . . .

It is true that Oregon law is minimal in its requirements of a person to be County Judge . . . The implications, the duties, the responsibilities and the burdens of the office are both great and numerous . . . It behooves each and every person to consider the value of a legal background and experience of he who would aspire to this important position . . . The Democratic candidate received little more than the other eleven million men in uniform during the second World War as far as his educa-

tion is concerned . . . Judge Whipple is legally trained, and has served this county well, he has brought to Columbia County, status, respect, fiscal responsibility, rapport with other counties and state agencies . . . Harmony now prevails in the County Court . . . Judge Whipple works courteously with people, Democrats and Republicans alike . . .

My travels throughout Columbia County, brings more assurance each time, of Judge Whipple's re-election . . . But if vigilance is the price of liberty, then we must in this country keep our eyes on the future which offers so very much to us all if we but prepare for it . . . To paraphrase a current advertisement, most folks I have talked to agree that "us Whipple folks would rather fight than switch". . . Abraham Lincoln said, ". . . at what point then is the approach to danger to be expected? . . . answer, it must spring upon us from amongst us; . . . if destruction be our lot, we must ourselves be its author and finisher . . . as a nation of free men, we must live through all time or die of suicide . . ." Therefore we had better think twice before we swap Judge Whipple for an unknown quality . . .

Respectfully submitted by a DEMOCRAT . . .

Vernon V. Griffin  
Rte. 1, Box 234  
Warren, Oregon

I see in the paper where Mr. Seawright wants to be county judge and about all I can see that he has to offer is that he thinks it is time we made a change.

If he means that it is time for our county to change from a man of inexperience to one of experience I could go for that but to swap a man of Judge Whipple's professional background, integrity, experience and maturity for Seawright's visionary dreams would be a serious mistake, particularly now that our county is entering a period of great

industrial expansion.

Altho I am a life long democrat I can't see putting a man in as county judge that hasn't any more to recommend him than his army experience and whatever experience he has gained working in a cleaning and pressing shop which I understand has been his sole occupation in this county.

I think we should keep a good Judge while we've got one.

L. C. Wheeler  
Box 352  
Scappoose, Oregon

I am getting interested in this race for county judge and what got me to thinking about it was an ad I saw where Seawright said "it is time for a change".

I work at one of the mills and like a lot of other working men have worked there a long time, 13 years, in fact. I have learned a lot during that time and now feel better qualified and trained when I first started. I also feel that I am worth more to my employer . . .

To follow in Seawright's thinking I guess all we working men, who like Judge Whipple, have worked hard for a few years and have become proficient should be turned out of our jobs. To me that is pretty fuzzy thinking.

Party label doesn't mean a thing to me when it comes to electing a man to a county office. I have known John Whipple for several years and know he is sincere and has the interest of we working men and women at heart. I feel that changing county judges now could prove a costly mistake for our county.

A. F. Coy  
2525 Firlock Park Blvd  
St. Helens, Oregon

To the Editor:

In a perfect example of poor use of land, and lack of long range planning, the County Court sold the river acreage north of St. Helens to Alcoa

Mining Company as a secondary development site. This is to be used when, and if, ore supplies in South America run out which may never come about. In doing so the county denied us an excellent state owned and operated Marine Park which the state desired to develop in this area for years.

This site would be producing a tremendous return in public relations, effective use of land, and a giant step forward in creating in Columbia County a recreational facility we so sadly lack. The county is only collecting taxes on this site based on tree farming which is the lowest possible rate.

This property is now unattainable for use as a public facility and the public has been denied its use. Sites like this are gradually slipping away from us because of poor judgment and lack of planning and cooperation.

## Vernonia Eagle

THURSDAY, OCTOBER 29, 1964 9

As a county judge, I would step up long range planning to a maximum and keep the public constantly informed as each step is taken. The chairman of the Columbia County Planning Commission advised me that we are 25 years behind Washington County in the area of planning and development! Isn't it time for a change?

Sincerely,

Earl N. Seawright  
Candidate for County Judge

Please vote 113 X LAWRENCE MEISSNER. He has the time, energy and ability to study proposed laws. Paid Ad. by Lawrence Meissner, Meissner Road, Deer Island. 423c

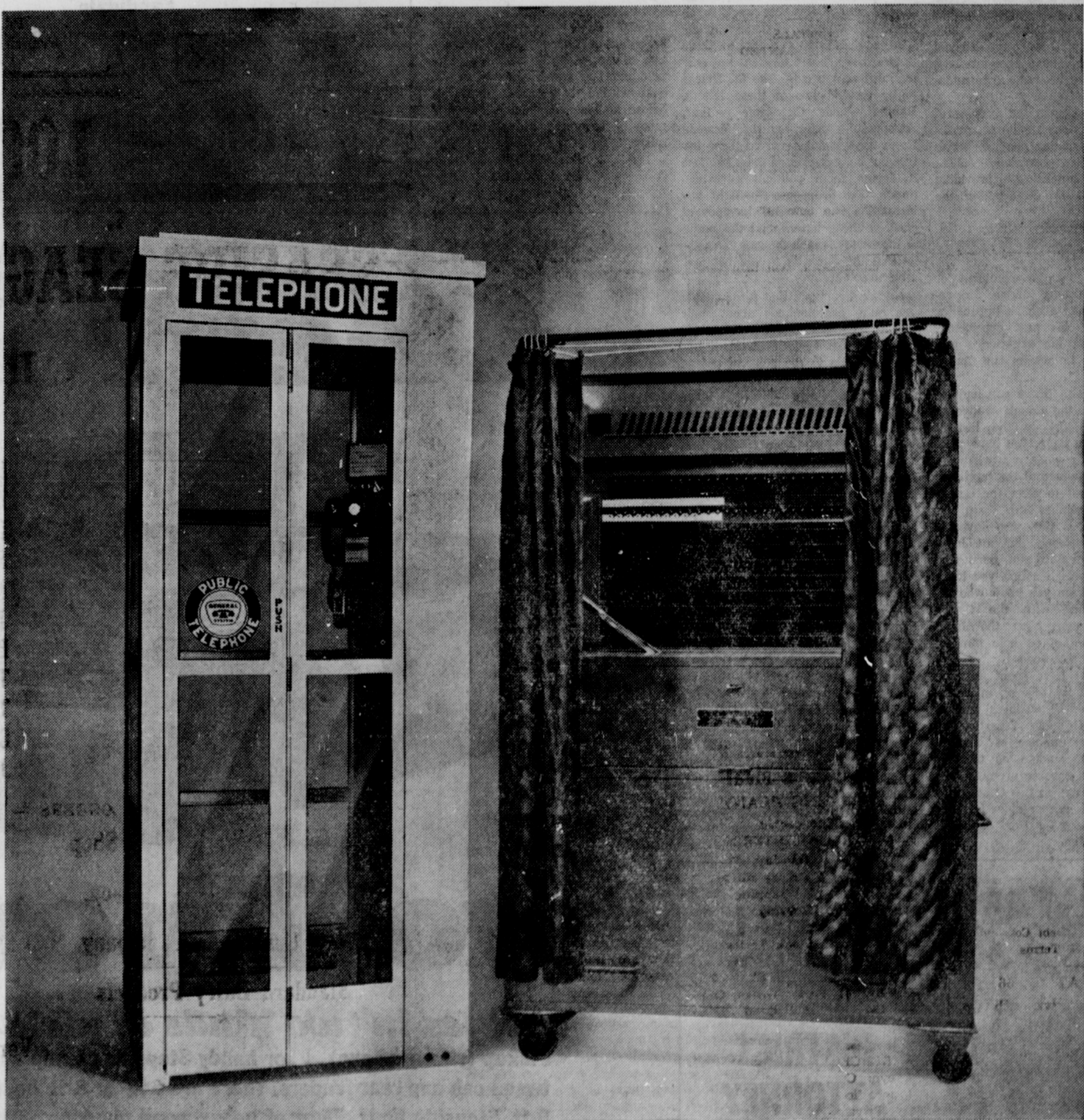
Elect  
**Reta Ridenour  
KERRY**  
For  
**Columbia County  
Commissioner**  
Republican

"A full day's work for the taxpayer's Dollar."

Born and educated in Oregon, I have been a taxpayer in Columbia County since 1947. I have worked in the Columbia County Health Dept. and Columbia County Assessor's Office and for the Oregon State Tax Commission. Your support will be appreciated.

Endorsed by ILWU, Local No. 8

Pd. Adv. By Reta Ridenour Kerry  
405 S.E. Third, Scappoose, Oregon



## Two booths dedicated to letting Americans have their say

The right to choose and the right to speak one's mind are two of America's main pillars of strength. And the freedom to exercise these rights is, in itself, a guarantee against an invasion of our hard-won privileges as Americans. Now—again—is the time for all good men to stand up and be counted. Be informed—speak up for the principles you believe in, and vote.

**WEST COAST TELEPHONE CO.** **GENERAL SYSTEM**  
A member of the General System