

Columbia county sheep growers will be interested to know that they will be able to receive assistance hereafter whenever they have difficulties with predators. This assistance can be obtained by notifying our office whenever losses occur or whenever predators are seen in the area.

This arrangement for assistance in predator control has been worked out by members of the Columbia County Court in cooperation with a committee of the Columbia County Livestock Association and a committee of the Columbia County Farm Bureau. Members of various Granges also discussed this matter in their meetings and gave the program their support. S. H. Hansen and Mel Smith, representatives for the predator control branch of the U.S. Fish and Wildlife Service, met with the county folks to work out a program of control for the coming year.

Some of the folks who spent considerable time discussing, planning, and working on the program of predator control are: George and John Poysky; Roy Engbretson; Jess Lewis; Ronald Hein, Warren; George Cowles, Rainier; and Loren Johnson, Scappoose. Many others also worked on the problem.

Farrell West will be serving Columbia county as trapper. Farrell has a good reputation as a trapper, and folks who have used his service report that they have been well pleased with the work that he does. Funds to pay for the predator control program are provided by the county, through the county court and budget committee, by the state through the State Game Commission, and the federal government through the Fish and Wildlife Service.

Funds provided are not quite adequate to keep West working the entire year, but according to agreement he will be available all year long to do trouble-shooting whenever predators cause difficulty.

In addition to trouble-shooting when predators move in, West will maintain trap lines, and, even more important, he will conduct a poisoning campaign during the winter season. This poisoning campaign will be closely controlled and will be limited to areas that are uninhabited or frequented by men or livestock. A small amount of poisoning was carried on in this and other counties last year and apparently will be a big success. Special poisons such as 1080 (sodium fluoracetate) and special techniques are used to protect fur bearing animals and attract only coyotes.

The sheep industry in Columbia county has a considerable potential—much greater than it is at the present time. Our climate and location makes many parts of the county ideal for the production of early spring lambs. Many of our farm are small but could be well adopted to a small farm flock of ewes. Feeder lambs—not in the usual feed lot—have worked out very well for folks on the bottom lands at Clatskanie and Rainier.

Many folks have said that they have either tried to raise lambs or would like to but because of the predator situation, they did not feel that it would be a profitable venture. From past experience, we feel that this will no longer be an obstacle now that a trapper is available to do trouble-shooting and to work on predators moving down from the high country.

**4-H Club Members Told to Register Now for Tour**

The second annual 4-H home economics tour to Portland is scheduled for Thursday, July 15, according to Mrs. Margaret Allyn, home agent.

Places to be visited include the Nabisco Company, Oregon Worst-Ed Mill, Foundation Worst-Ed Mill and KOIN-TV Studios.

Any club members enrolled in a home economics club is eligible to attend. Lunch will be eaten at one of the parks.

All those going must register with the county extension office by Saturday, July 10.

Clearing the rear ledge helps prevent injuries in automobile accident. Safety experts agree that many injuries could have been prevented in accidents if the ledge had been cleared off and a sudden stop had not catapulted objects into the back of the driver's head.

"Why are fir trees dying," is a question that has come to us rather frequently lately. Upon examination we find that these trees have started dying at the top and the condition gradually extends downward. In almost all cases this dying has been the result of the working of the Douglas fir bark beetle.

We do not have a satisfactory means of control of this pest, but, if it is desirable to try to save the tree, cutting the tops out to a point below where the tree is dying may save it.

The tops of such trees that are cut off and any trees that are dying and not to be kept should be removed and burned so that the beetles are completely destroyed. Otherwise they may move to other trees.

**Tree Recognition Leaflets Available on Request**

Thirty species of trees common to Oregon are identified with drawings and brief descriptions in a one-page leaflet just published by Oregon State college extension service. A handy reference guide for outings or for distribution to visitors, the leaflet may also be used as a quiz sheet for study groups.

Copies of extension circular 567, "Oregon Tree Quiz—Key," are available from county extension agents or from the Oregon State college clerical exchange.

Automobile manufacturers have discovered that nearly 50% of those persons who think they want to buy the less expensive models wind up buying the best car in the line.

**Jersey Club Plans Picnic**

Plans are taking shape for the Jersey Club picnic to be held at Tom Herzog's place in Warren on Saturday, July 17, starting at 10:30 a.m. with a farm tour. This program, which is sponsored by the Columbia County Jersey Club, will include a shipping and fitting demonstration and dairy showmanship instructions, led by Don Anderson. Also, a dairy judging contest with the vocational agriculture instructors in charge, and a de-horning demonstration by Don Walrod, Columbia County Extension Agent, using an electric de-horner.

All FFA and 4-H members are invited to this field day, which will offer excellent opportunities to get help on fitting and show-

manship as well as practicing judging. There will be prizes for winners in the judging contest. Everyone should bring their own lunch. Ice cream will be furnished to all who attend.

A creditor need not accept more than 25 pennies in payment of a bill.

**PILES (HEMORRHOIDS)**  
and other rectal disorders.  
• COLON AND STOMACH AILMENTS  
• RUPTURE (Hernia)  
Treated Without Hospital Operation  
C. J. Dean, M.D.  
Chiropractor  
1883-1948  
**FREE** Descriptive Booklet Write or Call  
**THE DEAN CLINIC**  
Open 10 until 5 Monday through Friday.  
Until 8 p.m. Monday, Wednesday and Friday.  
Chiropractic Physician... In our 43rd year.  
2024 NORTHEAST SANDY BOULEVARD  
Telephone EA 3918 Portland 13, Ore.

**THE VERNONIA EAGLE**  
Official Newspaper of  
Vernonia, Oregon  
Marvin Kamholz  
Editor and Publisher  
Entered as second class mail matter, August 4, 1922 at the post office in Vernonia, Oregon, under the act of March 3, 1879. Subscription price \$3.00 yearly in the Nehalem Valley. Elsewhere \$3.50.  
**NATIONAL EDITORIAL ASSOCIATION**  
ACTIVE MEMBER  
**NEWSPAPER PUBLISHERS ASSOCIATION**

**NOW'S THE TIME FOR HOME CANNING and FREEZING**



**JUICY ELBERTAS — GOLDEN YELLOW FREESTONES**  
You best buy of the peaches for the year is right now

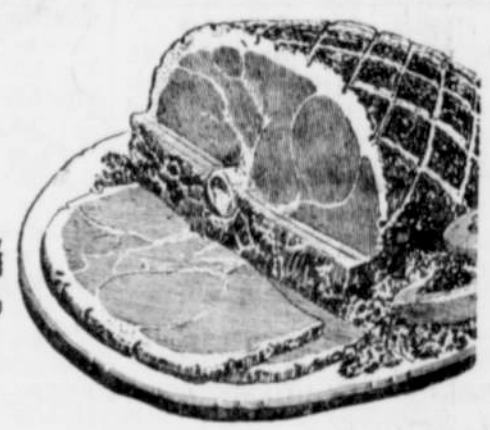
<b>Peaches</b>	Per Lb.	15c	17-Lb. Flat	\$1.69
Seedless Grapes	lb.	29c		
Crenshaw Melons	lb.	15c		
Persian Melons	lb.	17c		
Nectarines	lb.	19c		
Green Beans	2-lbs.	33c		
Celery Hearts	Each	29c		
Sweet Corn	4 ears	29c		
Cucumbers	lb.	15c		
Green Onions	3 Bus.	14c		
Radishes	3 Bus.	14c		
Yellow Onions Jumbo	3-lb.	19c		
Green Peppers	lb.	20c		
Potatoes, New, Econ.	10-lb.	59c		
Potatoes, New	25-lb.	\$1.47		
Potatoes, Prem.	lb.	8c		



Kerr Reg. Mason Jars, Pt.	Doz.	\$1.15
Kerr Reg. Lids	Doz.	14c
Jelly Glasses, Tall squat, 1/2 pt.	Doz.	79c
Certo Liquid Pectin	Bottle	25c
Sure-Jell Pectin	2 pkgs.	25c
M.C.P. Pectin	2 pkgs.	25c
Kordite Freez' Boxes	qt.	75c
Sno White Salt	29-oz.	12c
Royal Satin Shortening	3-lb.	83c
Snowdrift Shortening	3-lb.	89c
Snow's Clem Chowder	15-oz.	29c
Swift's Prem	12-oz. can	47c
Underwood Deviled Ham	1 1/4-oz.	22c
White Star Tuna, Bite size	No. 1/2 can	39c
Hi Ho Crackers	1-lb. pkg.	35c
NBC Snowflake	1-lb. pkg.	27c
NuMade Mayonnaise	Pt.	41c
Duchess Salad Dressing	Qt.	55c
No Hill Coffee	lb. \$1.05 2-lb. \$2.11	
Airway Coffee	lb. \$1.04 2-lb. \$2.07	
Dial Soap	2 reg. bars	25c
Dial Soap	2 Bath bars	37c
White Magic Soap	46-oz.	29c

**BLACK PEPPER**  
Crown Colony — Ground  
4-OZ. TIN **39c**

**SMOOTH SKINNED, TASTY HAMS**  
SHANK END CUT **lb. 49c**  
Smoked and Sugar-cured



<b>Choc. Dairy Drink</b>	Lac-Mix	1-lb. Carton	<b>43c</b>
<b>Crushed Pineapple</b>	Highway	2 1/2 Can	<b>30c</b>
<b>H-C Orangeade</b>	4	46-oz. Cans	<b>\$1.00</b>
<b>Torpedo Tuna Fish</b>	Grated	No. 1/2 Can	<b>19c</b>
<b>Iced Dessert</b>	Band Box	Quart Carton	<b>29c</b>

WHOLE OR HALF	BUTT END CUT	HAM SLICES	CENTER CUT HAM ROAST
<b>lb. 59c</b>	<b>lb. 57c</b>	<b>lb. 89c</b>	<b>lb. 89c</b>

Parade Detergent	19-oz. pkg.	30c
Victorias Cane Sugar	10-lb.	97c
Kitchen Craft Flour	10-lb. pkg.	97c
Jell Well Gelatin or Puddings	4 pkg.	25c
Jell-O Gelatin Variety	2 Pkgs.	15c
Cherub Milk	1 1/4-oz.	2 cans 25c
Pineapple Juice LaLani	No. 211 can	10c
Tomato Juice Sunny Dawn	*300 can	10c
Hghway Kernel Corn	No. 300 can	15c
Piedmont Mayonnaise	Quart	55c
Peanut Butter Real Roast	20-oz. jar	45c
Edwards Coffee	1-lb. \$1.11 2-lb. \$2.21	
Van Zee Cheese Food	2-lb. Pkg.	65c
Oven Glo Soda Crackers	2-lb. Pkg.	39c

**Lemons Free!**  
FOR YOUR ICED TEA WHEN YOU BUY  
NO EXTRA COST

**CANTERBURY TEA**  
3 Lemons FREE With 1-lb. or 100 bag pkg.  
2 Lemons FREE With 1/2-lb. or 48 bag pkg.  
1 Lemon FREE With 1/4-lb. or 16 bag pkg.

**Genuine Choice Veal Sale**

Small Loin Chops	lb.	85c
Shldr. Roast, blade	lb.	49c
Round Bone Roast	lb.	55c
Large Loin or Rib Chops	lb.	65c
Breast O'Veal	lb.	19c

**SPARE RIBS**  
3 to 5-lb. **LB. 49c**

Plate Boiling Beef	lb.	19c
Standing Rib Roast	lb.	79c
Lean Ground Beef	lb.	39c
Boneless Round Steak	lb.	95c
Boneless Top Sirloin	lb.	\$1.19
Beef Tenderloin Steak	lb.	\$1.59
Sliced Halibut	lb.	55c
Breaded Fantail Shrimp	10-oz.	59c

for the best **WIN \$100.00 CASH** using the **SAFeway** Produce Feature of the Week! **PEACHES**  
Details at Safeway

Just Take Canterbury Tea and Lemons to the Checkstand  
Prices Effective Through Saturday, July 10. We Reserve the Right to Limit Quantities — No Sales to Dealers  
**SAFeway**

**SAVE 5¢** on 12 oz. jar of **BEVERLY PEANUT BUTTER**  
Coupon on Skylark Bread at bread counter  
12 OZ. BEVERLY — **33c** (with coupon)