

SPORT TOPICS

HUDSON IS LOSER SUN.

Vernonia evened the score with Hudson Sunday, at least for this year's baseball season, by rounding out the ninth inning and the end of the game with 12 runs to Hudson's 1. That count also gave the locals four wins so far to three losses. Two games have been called because of weather.

Derschmidt hurled one of his best games so far by turning away 14 Hudson hopefuls at the plate. In addition to turning in a good afternoon's work on the mound, he added two round trips home to Vernonia's 14 points.

Lyle Galloway made his debut behind the plate to replace LaPorte who was unable to be present. His showing there was okeh with the home aggregation. Lineups for Sunday were:

VERNONIA—	AB	R	H	E
Gordon, cf	5	0	3	0
Willhite, lf	5	1	2	0
Girod, 2b	5	3	1	0
Quinn, 1b	5	2	1	0
Byers, ss	5	0	3	0
Moesley, rf	5	1	1	0
Cline, 3b	5	2	2	0
Galloway, c	4	1	1	1
Derschmidt, p	4	2	2	0
Totals	43	12	16	1

HUDSON—	AB	R	H	E
F. Girt, cf	4	1	1	1
Newell, ss	4	0	0	0
Fred Girt, 3b	3	0	0	0
Blunk, c	4	0	0	1
B. Stennick, 1b	3	0	0	0
J. Stennick, p	3	0	1	0
B. Stennick, 2b	3	0	0	0
Sanford, lf	3	0	0	0
Muirotto, rf	3	0	0	0
Totals	30	1	2	2

Saints Next On Schedule

Vernonia will try to take the measure of St. Helens for the second time this season when the two teams meet here next Sunday. The game is called for 2:30 July 7 and Jack Nance, manager for the Vernonia squad, promised a good game for fans.

The usual competitive spirit between residents of the two towns always makes a meeting of Vernonia and St. Helens players interesting to watch.

Mist People Visit Friends

MIST—Mr. and Mrs. Wm. Keaton and Elsie and their daughter, Mrs. Goldie Kuzla and baby from Roseburg were guests at the Wm. Bridgers home during the week end. They also visited at the beach.

Mr. and Mrs. Geo. Jones were Saturday evening visitors of the Austin Dowlings.

Mr. and Mrs. Floyd Libel returned to their home at Fairview Saturday evening after visiting several days at the J. O. Libel home.

Mr. and Mrs. Joe Roeser and Butch and Joe's mother and two brothers, Robert and Charles, left Saturday to spend several days in Montana visiting their sister. Mrs. Lew Choate was a village shopper Thursday.

The Earl Roper family enjoyed a visit from his brother of Seattle and a friend last Thursday.

In prewar period 1936-39 a married man paid the federal government 6 per cent of a \$15,000 income; during the war, 31 per cent, and under reduced 1946 rates will still pay 27 per cent—four and a half times the prewar amount.

Ladder Play

Vernonia Country Club President Tom Bateman still holds top position on the club ladder, a listing of the ten high names revealed Tuesday. The present ladder lists:

- Tom Bateman
- Kent Bauersfeldt
- Ed Reichwein
- Paul Dyer
- Calvin Davis
- Ben Brickel
- Frank Hartwick
- Jack Anderson
- Loel Roberts
- Jim Davies

TURNER ASKS TUES. MEETING

Another date for a meeting of all boys 14 years of age and under is set for Tuesday by Marv Turner, city park lifeguard and supervisor. Purpose of the meeting, which is called for 10 o'clock that morning, is to arrange a softball schedule for the rest of the summer months.

Another meeting will probably be held later for boys over 14 years of age who are interested in playing.

In Iowa some 3500 farmers fly "Flivver" planes! Oklahoma's "Flying Farmers" started with 38 members in 1944, now has more than 3000.

HATCHERY IS COMING TOPIC

A fish hatchery for the Nehalem valley is the next topic to be brought up when the Nehalem Valley Hunters and Anglers club meets July 12. That meeting was originally scheduled for July 5, Friday, but has been postponed until the 12th because of the holiday this week.

The sportsmen will meet at the L.O.O.F. hall to talk on the subject.

Exposition to Open October 5

The Pacific International Livestock Exposition will be revived this fall after a hibernation of four years, it was announced by T. B. Wilcox, Jr., president. The revitalized show, scheduled for October 5 through 12 at Portland, Oregon, will be under manage-

ment of Walter Holt, who replaces the late O. M. Plummer, identified with the exposition since its inception.

This year's stock show will be the 36th since its founding in 1910. During that period, it has gained world wide recognition and fame, according to Wilcox. The exposition is housed in one of the world's largest structures, a show building which covers 11 acres, all under one roof.

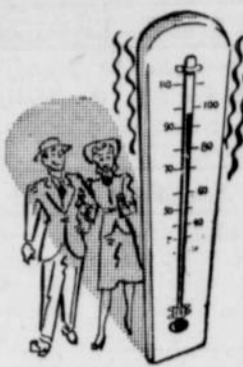
Except during the four years of World War II, when the exposition building was used by the U. S. army, the Pacific International has attracted exceptionally large crowds. In 1941 the official count was 127,394.

Exhibits of livestock and agricultural and industrial products have been sent to Portland from as far east as the Atlantic coast, and over 40 per cent of the states in the nation are represented at each exposition.

Primarily Educational in nature, the Pacific International is excelled by no other means in its ability to get agricultural information before both farming people

and the general public," Wilcox stated.

Send The Eagle to your friends.



It Could Happen—And Maybe It Will

Maybe it's cold today, but it can be just the opposite tomorrow. Cold or hot, Dessy's is the spot to quench your thirst.

Dessy's Tavern

The Vernonia Country Club

CLUB MEMBERS—Remember to play your qualifying round between now and July 14

See Club for Golf Supplies

Public invited for golf

Enjoy The 4th

Let the kitchen rest, and you, too. Enjoy your holiday dinner at this cafe without the bother of meal preparing.

CHAT 'N NIBBLE
E. V. ROBERTSON
CLEVE ROBERTSON

GOT A MOUSE?

Or does your car squeek because you neglected a grease job at the right time? Thorough Shellubrication is one of our specialties.

Geo. Johnson Vernonia Serv. Sta.
Vernonia Agent for Kaiser-Frazier Corp.

Going To The Dogs!

LEW'S PLACE WILL BE CLOSED JULY 4TH

We think we can make more money at the dog races than we can at home without any beer to sell. Better buy some wine today—because wherever you spend the 4th, you won't be able to get beer to take out.

Lew's Place

"WHERE THE CROWD GOES"
Ann & Lew Floaten

PETE BRUNSMAN

SPORTING GOODS, FRIGIDAIRE, GUNS AND AMMUNITION
FISHING TACKLE, TOYS, MARSHALL WELLS PAINT
GIFTS AND HARDWARE

Don't Forget to Get a Car Jack and Tire Pump Before That 4th of July Trip

Round Pt. Shovels	\$2.25	Scissor Car Jack	\$5.95	Tire Pump	\$2.10 & \$2.25
Roller Skates, pair	\$2.40	Iron Cords and Extension Cords	each	60c	
Just Added Complete Stock of Bolts and Lag Screws		2-Gallon Can Auto King Motor Oil	can	\$1.30	
Nails	Limit 5 Pounds	\$1.00 Value Towel Bar		25c	
Boker and Wess Scissors	\$1.80 to \$2.80	Red, Green, Black or Ivory			
Richardson Steel Casting Rods	\$6.60 to \$13.25	One Wheel Garden Cultivator		\$4.55	
Coleman Lanterns	\$7.25	Premier Vacuum Cleaner		\$54.50	



A STATEMENT ABOUT PRICES

Recent announcements of higher prices on certain foods call for absolutely wasteful menu planning and more careful and economical food buying in order to "balance the budget." We sincerely believe we can help you get the most out of your food dollar, if you will

shop Safeway regularly. Whether price ceilings are removed or not we pledge continuance of our long-established pricing policy—for this policy is even more important to those finding it increasingly harder to meet expenses. And this policy is fair to all.

1. Safeway prices give consumers the benefit of savings resulting from our way of doing business by pricing at the lowest point that will yield a reasonable profit. "Not how much we can 'get' for an item, but how low it can be sold" is the determining factor.
2. Safeway does not go in for "ballyhoo" or deep-cut below-cost prices on a few items to attract customers. Rather, all items—store wide—are sold at the very minimum prices every day. At the same time, Safeway pays legitimate market prices to farmers and other producers of food.
3. Safeway will do no speculative hoarding and will maintain largest possible supplies of foods in stores at all times—made equally available to all.

Grocery features listed here effective—
6 DAYS—Fri., July 5, thru Thur., July 11

Coffee, Tea, Beverages		
Airway Coffee	1-lb. bag	20¢
Nob Hill Coffee	1-lb. bag	23¢
Canterbury Black Tea	1-lb. bag	22¢
Tree Tea, black	1-lb. bag	26¢
Borden's Hemo	1-lb. size	59¢
Our Mother's Cocoa	2-lb. pkg.	19¢
Fla-vor-ade Beverage Mix	3 pkgs.	10¢
Canned Goods		
Apple Juice, Hood River	qt. bottle	22¢
Grapefruit Juice	46-oz. can	13¢
Blended Juice	46-oz. can	18¢
Kraut Juice, Libby's	No. 2 can	14¢
Del Monte Corn	No. 2 can	14¢
Peas, 4-Sieve, Highway	No. 2 can	13¢
Spinach, Emerald Bay	No. 2 1/2 can	18¢
Green Beans	Rapid Cut Beans No. 2 can	11¢
Diced Beets	Blue Tag Fancy Pack No. 2 can	10¢
Sauerkraut, Steinfeld's	No. 2 1/2 can	17¢
Tomato Sauce, Gardenside	tin	5¢
Pork and Beans, Dennison's	1 1/2-oz. tin	13¢
Chili Con Carne	Van Camp's No. 300 can	25¢
Heinz Cream of Tomato Soup	can	10¢
Campbell's Vegetable Soup	per can	13¢
Rancho Chicken Soup	can	16¢
Deviled Ham, Puritan	3-oz. tin	14¢
Liver Pate, Hormel's	3-oz. tin	7¢
Whole Clams	H. & A. Brand 10-oz. can	39¢

Special NOTICE:

YOUR SAFEWAY WILL

CLOSE

FOR

REMODELING

THIS SAT. NITE
JULY 6TH

BUT WILL

Re-Open

THE FOLLOWING
SAT., JULY 13

ENTER THE Thrilling EDWARDS COFFEE CONTEST

25 BENDIX Home Laundries
25 BULOVA Wrist Watches
\$2500.00 in CASH PRIZES
FREE ENTRY BLANKS AT SAFEWAY

28¢ POUND

Canning Supplies

Kerr Mason Jars	Reg. Case of 12 pts.	69¢	qts.	83¢
Ball Ideal Jars	Case of 24 pts.	\$1.55	12 qts.	93¢
Kerr Wide Mouth Jars	Case of 12 pts.			89¢
Jar Rubbers	Regular Mason and Ideal		3 pkgs.	10¢
Coffee Jar Lids			pkg. of 1 doz.	9¢
Wide Mouth Lids	Ball Eclipse		pkg.	18¢
Reg. Mason Caps	Anchor-Hooking		pkg.	15¢
Certo Pectin	Special 3-bottle offer		3 bottles	41¢
M. C. P. Powdered Pectin			3 pkgs.	25¢

Soaps, Household Supplies

Sweetheart Soap	Bath size	11¢	Reg. 2 bars	13¢
Cashmere Bouquet Soap	Bar	10¢	3 bars	27¢
Camay Beauty Soap			3 bars	20¢
Lifebuoy Health Soap			3 bars	20¢
Palmyra Soap	Bath 2 bars	19¢	Reg. 3 bars	20¢
White Magic Bleach	Qt.	10¢	1/2 gal.	17¢
Purex Bleach	Quart	12¢	1/2 gal.	23¢
Boon Household Cleaner	Quart	23¢	1/2 gal.	43¢
'Insect' Repellent Light Globes	60-watt		Incl. tax	27¢
'Insect' Repellent Light Globes	100-watt		Incl. tax	38¢

Safeway Farm-Fresh Produce

FRIDAY AND SATURDAY FEATURES		
Watermelons	Sweet Meat	lb 04c
Cantaloupes	Firm and Ripe	lb. 8 1/2 c
Plums	Santa Rosa	lb. 19c
Juicy Lemons	Thin Skins	lb 11 1/2 c
Cabbage	Local green	5 1/2 c
Green Beans	Local	lb. 17 1/2 c
Carrots	No tops to pay for	lb. 06 1/2 c
New Peas	Plump, Long Pods	lb. 14c
Ripe Tomatoes		lb 13c
Cucumbers	Hot House	lb. 13c

AT SAFEWAY

Safeway Guaranteed Meats

SPECIAL MEAT FEATURES EFFECTIVE FRIDAY AND SATURDAY

—SPRING LAMB—		
Legs	Grade 'AA' lb.	40¢
Shoulder	Square Cut 'AA' lb.	37¢
Loin Chops	'AA' lb.	59¢
Rib Chops	'AA' lb.	46¢
Lamb Stew	'AA' lb.	20¢
Fowl	Grade A Dressed	lb. 41¢
Bologna	A. C. Type 2	lb. 34¢
Liver Sausage	A. C.	35c
Pork Sausage	Bulk Type 1	lb. 39¢
Halibut	Fresh Firm Slices	lb. 41¢