

America's Cup Race

The next race for America's Cup, most coveted trophy of the yachting worlds of Great Britain and the United States, will be held in September, 1937. T. O. M. Sopwith, British airplane manufacturer, will compete with his Endeavour II, an all-steel "J" class yacht.

The new Endeavour is 87 feet on the waterline, compared with 83 feet for Endeavour I and some 20 tons heavier than the old challenger.

NEW PRESSURE LAMP PROTECTS EYESIGHT

Provides 300 Candlepower "Live" Natural Brilliance For Only 1c a Night

A new mantle lamp that protects your sight with 300 candlepower "live," air-pressure light is bringing "eye-health" to thousands of homes, especially in rural communities.

This lamp gives 5 times more light than any mantle lamp which has no provision for air pressure. Special laboratory tests prove its brilliance is nearest like natural daylight . . . kind to eyes!

W. C. Coleman, pioneer inventor of gas-pressure appliances, has spent 36 years perfecting this lamp. It makes its own gas . . . burns kerosene or gasoline. It operates for only 1c a night! It is clean, safe, and is an ornament in any home.

Eye-strain is caused by poor and insufficient light, and often results in serious damage to the eyes. Now, nobody need take chances with their precious sight. This new Coleman Lamp is so inexpensive that no one can afford to be without it. It provides plenty of light for every home need . . . for reading, sewing, studying, playing.

Readers of this paper can get full details of this remarkable lamp, including illustrations of the many beautiful models, by simply sending a postcard to W. C. Coleman, Dept. WU-171, Wichita, Kansas.



W. C. COLEMAN

The Lifting Power of BEHNKE-WALKER PREPARATION

- 1st—A Better Position
 - 2nd—Rapid Promotion
 - 3rd—Larger Opportunities
- "Planning Your Future" will give you the details. Write today.

Behnke Walker
BUSINESS COLLEGE

S. W. Salmon at 11th Avenue, Portland, Ore.

AIM RIGHT

Do not be too sure that your opinions are right; only make sure that your aims are right

44 AWARDS



AT ONE STATE FAIR!

... the record of one exhibitor who has used many brands but who now uses CLABBER GIRL, exclusively.



ONLY 10¢

Your Grocer Has It

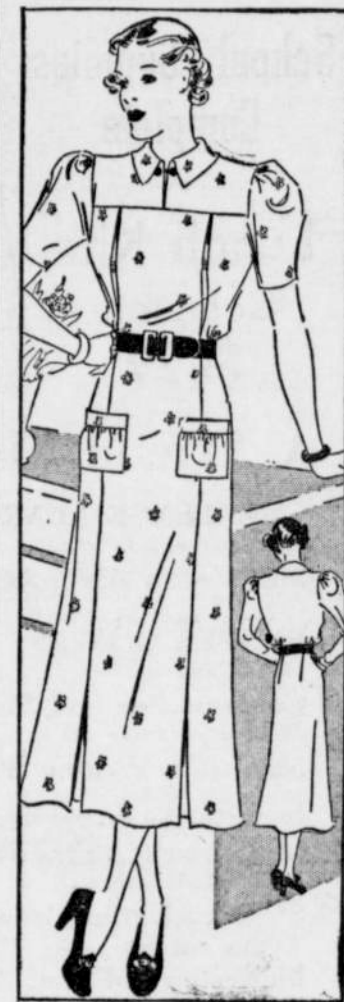
CLABBER GIRL
BAKING POWDER

A Fetching Frock With New Features

So you like this number! Lovely, isn't it? Boasting the very newest in sleeves and smart styling, it is just the frock to occupy the leading role in your wardrobe for weeks and months ahead. What's more, you can make it quickly and inexpensively, with a minimum of hot weather exertion.

Note the choice of short or long sleeves, the paneled front, the clever collar, the lovely pockets—there is a perfect symmetry of design and a simplicity of line which makes it a favorite from the bell! Fashioned of a printed silk, crepe, or cotton, you can achieve enviable distinction in this smart model, a frock suitable for almost any daytime occasion and the sort to give you the ultimate in satisfaction.

Make it yourself, sending today for Barbara Bell Pattern, No. 1928-B designed for sizes 14, 16,



1928-B

18, 20; 32, 34, 36, 38, 40 and 42. Size 16 requires just 4 yards of 39-inch fabric, with short sleeves. Send 15 cents in coins.

Send for the Fall Pattern Book containing 100 Barbara Bell well-planned, easy-to-make patterns. Exclusive fashions for children, young women, and matrons. Send 15 cents for your copy.

Send your order to The Sewing Circle Pattern Dept., 367 W. Adams St., Chicago, Ill.

© Bell Syndicate.—WNU Service.

Fashion Notes

The smartest gloves this fall will be "smooth."

The broad shoulder line cape will be a favored autumn style.

Rusts and brown mixtures are dominating the sports and casual coats for autumn wear.

The culotte dress now appears in soft wool jersey with slide fastener at neck and placket.

The coat dress will be one of the smartest costumes for fall, particularly trig with leather buttons and belt.

If you have a weakness for colored gloves, continue to select bright ones for fall—they will be very smart!

Gray and brown, separate or together, will be notable shades in autumn sports wear, an eastern stylist reports.

Poultry

SERIOUS FEEDING TIME FOR TURKEYS

Raisers Should Be Putting Pounds on Birds.

By L. E. CLINE, University of Nevada Agricultural Extension Division.—WNU Service.

Turkey growers who want to make profits at the business are putting the pounds on their birds as fast as possible these days. The four or five months of the summer feeding period are the most vital to making profits. The first six weeks of the turkey's life is a very critical period, but little weight is put on. The finishing period just before marketing the birds is also important, but in it likewise little weight is added in proportion to the large expense for feed.

But during the in-between period, according to Cline, the rapidly growing turkey adds pounds economically because it converts, at a rapid rate, large amounts of a relatively low priced feed into a high-priced commodity to grace the table during the fall and winter. During this fast growing period a relatively small proportion of the feed given is needed for maintenance while a large proportion is available for growth and profits.

When the average turkey is two months old it will weigh about 2.5 pounds. This weight is put on at an average rate of 2.15 pounds of feed per pound gain in weight. A month later the turkey will weigh 5 pounds, and will be gaining one pound for approximately each three pounds of feed eaten.

At the end of the fourth month, the turkey should weigh at least 8.25 pounds and is turning feed into turkey meat at the rate of 3.5 pounds of feed to one pound of turkey.

Good gains may be made also during the fifth month, but thereafter the ratio of pounds gained to feed consumed declines very rapidly, until it takes 5.6 pounds of feed to produce one pound of turkey in the sixth month and approximately 10.7 pounds of feed for one pound of meat in the seventh month.

After that the feed often costs more than the net price which will be received for the additional pounds of turkey.

While feeding in adequate quantity is very important the composition of the feed is equally important. The two must go together if the most pounds of turkey are to be put on.

Picking Out Feathers

The trouble with chickens picking out their feathers is caused by a small mite that gets into the skin near the base of the feathers and causes irritation. To get rid of this mite, according to the North Carolina State college, the poultry house should be thoroughly cleaned and sprayed with a solution of three parts of crude petroleum or carbolineum and one and one-half parts of kerosene. Dip the birds in a tub containing two ounces of flowers of sulphur and six ounces of flaked soap to five gallons of tepid water. Be sure that the solution gets to the skin.

Salt Additions Desirable

Good chicks have been grown with rations that did not contain any common salt (sodium chloride) addition. Rations that carried as much as a 5 per cent of common salt appear to be mildly injurious. It is true, says the Wisconsin Agriculturist, that generous supplies of chlorine are needed to make hydrochloric acid in the stomach which aids in protein digestion. The results secured seem to show quite definitely that it is well to add from one-half to one pound of salt to each hundred pounds of chick mash.

"Golden Rose"

The only gift in the world that is made exclusively to royalty is the "Golden Rose," which is presented by the Pope to a sovereign or a member of a reigning family who merits it through pious deeds. It is a solid gold replica of a spray of roses in a vase which, through essential oils concealed in the petals, possesses a lasting fragrance. — Collier's Weekly.

Week's Supply of Postum Free

Read the offer made by the Postum Company in another part of this paper. They will send a full week's supply of health giving Postum free to anyone who writes for it.—Adv.

The Choice

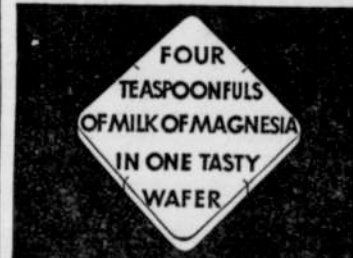
One soon finds that only close-mouthed people will do for friends.

BLOTCHY, ROUGH complexions improved, and smooth skin often restored by daily treatment with Resinol

EASE THE GRIPING IN PERIODIC PAIN

The intermittent return of feminine disturbance is natural. It is not natural, however, for such events to be accompanied by aggravated feminine disorders, excessive, gripping, throbbing pain, and very bad days. Many women find that the pain is relieved and the bad days greatly eased by the regular use of SALICON during the upset period. It has no bad effects, forms no habit, is quickly effective, and soothes the discomfort. Don't let the bad days disrupt your daily routine. Take two tablets at the first sign of pain and continue as long as needed.

Ask your druggist for SALICON.



AFTER YOU EAT?

After you finish a meal can you be sure of regular, successful elimination? Get rid of waste material that causes gas, acidity, headaches. Take Milnesia Wafers for quick, pleasant elimination. Each wafer equals 4 teaspoonfuls of milk of magnesia. 20c, 35c & 60c at drug stores.

Classified Department

AUCTION

\$10-\$100 DAY AUCTIONEERING. No invention can take its place. Quickly earned. No capital required. Send 10c Col. Carpenter, Box 44, Beverly Hills, Calif.

FENCES

General Electric Fence. Efficient economical on any current. Simple compact construction. Ten year Guarantee on every part. Schaefer Wickesberg Agency, Appleton, Wis.

WNU—13 37—36

Opening for FEMALE AGENTS

● Makers of a well known, highly ethical cosmetic preparation are seeking female agents, either new or currently engaged in similar work. Highly effective new selling angle makes it a sure-fire seller in 90% of cases. It will not be necessary to purchase sample merchandise if satisfactory credit references are furnished with letter of inquiry.

Write today, to

DENTON'S COSMETIC CO.
4402-23rd St., Long Island City, N. Y.

Community Spirit

Of all the lost talents, that of belonging, of being a true member of the community, is the greatest, and for many in our large cities, the least expressed.

To be a true neighbor, citizen, patriot—to take on the state, so that what it does, you do; to have the state within you, so that all that wounds public life hurts you—is to recover the tap root of existence, to lay hold of the most vital of all the strands of life.—Joseph Lee.

Grapple With Fortune

We are sure to get the better of fortune if we do but grapple with her.—Seneca.



Watch Your Kidneys!

Be Sure They Properly Cleanse the Blood

YOUR kidneys are constantly filtering waste matter from the blood stream. But kidneys sometimes lag in their work—do not act as nature intended—fail to remove impurities that poison the system when retained.

Then you may suffer nagging backache, dizziness, scanty or too frequent urination, getting up at night, puffiness under the eyes, feel nervous, miserable—all upset.

Don't delay? Use Doan's Pills. Doan's are especially for poorly functioning kidneys. They are recommended by grateful users the country over. Get them from any druggist.

DOAN'S PILLS

Depend on REAL MEDICATION

—not mere cosmetics TO HELP REFINE COARSENEED IRRITATED SKIN

CUTICURA SOAP AND OINTMENT

FREE Sample, write "Cuticura" Dept. 24, Malden, Mass.

When in the Northwest HEATHMAN HOTELS

In the hub of Portland, Oregon's shopping and theatrical center... these two splendid hostels offer you every comfort and luxury at extremely moderate cost.

BEST IN THE WEST

Portland's newest and finest hotels... located in the hub of the shopping and recreational district... are the unquestioned choice of experienced travelers.

530 ROOMS from \$2.50 up



THE NEW HEATHMAN HEATHMAN
HEADQUARTERS AT SALMON TRUNK AT SALMON
HARRY E. HEATHMAN MANAGER

PORTLAND
OREGON