

# Silk for High Style Sports Wear Captivating Frock; Unusual Pockets

By **CHERIE NICHOLAS**



**M**IDSUMMER means sports, and this year sportswear in the fashion picture means silks, for every outdoor activity from golf to swimming or just lazing about.

The smart golfer, this season, wears a simple shirtwaist frock of washable end-to-end or striped silk shirting or of classic silk crepe of marvelous quality or some one or other of the new linenlike silks, if not silk shantung. These smart and practical silk shirtmaker dresses often have fly fronts, tucked bosoms and pockets for your golf tees as the model centered in the picture displays. Blue silk crepe fashions this stylish and practical frock.

Very feminine and graceful for tennis are short dresses of soft silk weaves such as silk jacquards or Chinese silk damasks which are light, cool and comfortable. They are usually cut short, with sun-back décolletage, offering a refreshing contrast on the courts to the shorts and slacks that are so commonly worn. New for the tennis enthusiast is a white jacquard silk crepe frock cut on princess lines with a gored handling, the jacquard patterning showing lively little tennis-playing figures. See a model of this description to the left in the illustration. Note it has a squared décolletage and wide shoulder straps. Culottes are also a practical choice for tennis dresses.

For beach and bathing very smart women are wearing silk. The newest mode going is the little dressmaker suits fashioned whimsically of plain or printed silk crepes, silk shantungs and other novelty silks. Kind to the figure are they, being made in one piece effects with pleated or flared shorts. The most practical have matching jackets reaching just to the bottom of the suits as you see pictured to the right in the group. This model is of daisy-printed, dependably washable silk crepe. The shorts are pleated and the loose, matching swagger jacket has a youthful Peter Pan collar.

For the girl with a perfect figure there are also the silk lastex suits which fit the body like a glove and have touches of dressmaker detail at the bosom. The newest trick is

to wear them with one's jewels. There is such a variety in silk bathing and beach suits this summer that you can have two or three entirely different types in your outing wardrobe.

Pajamas are a "must have" for a vacation outfit, whether they are elaborate models that must stay on the beach or in the cabana, or the womanlike strictly tailored types that can safely receive guests in your own home or go out to call informally at an intimate friend's. They are made in tailored silk linens, silk shantungs, novelty sports silks, silk crepes.

Bathing suits with halter bodices and wrap-around skirts made of print silks in gay peasant design are also very goodlooking, and add infinitely to the picturesque beach panorama.

The craze for prints increases rather than languishes. It seems to be prints for everything and instead of growing weary of them there is that in them that intrigues more and more as the season progresses. If the entire costume be not of print then fashion offers a compromise in the way of accessories of vivid silk print. Such accents as belt, triangle scarf and bag of colorful silk print enliven many costumes.

© Western Newspaper Union.

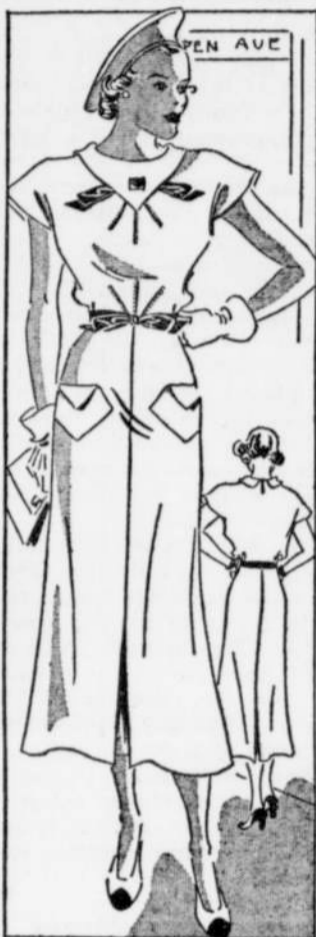
## BRAIDED ELASTIC MAKES DANDY BELT

Golf is a game where enthusiasts are offered more accessories a season than can be squeezed into a dozen clubroom lockers. All are intended to improve a duffer's game, but most of them turn out to be gadgets that fail their purpose.

One really successful accessory, however, that will be very much in evidence on the golf course this summer, is a belt made of braided, silk-covered, elastic cord. The belt looks like one of the corded belts so popular this season for sports wear. The rubber cord supplies the extra "give" that every sportsman seeks, and makes for maximum playing comfort.

The belts come in the leading summer colors, including black and white combination, polar bear, marine blue and plain white.

This clever dress features a flattering yoke which dips to a point in front and is equipped with twin slashes a few inches below the neckline to accommodate a ribbon bow of any color you wish to use. Most women like several different ones to which they match their accessories. Radiating tucks at the yoke and waist contribute a smooth fit and flattering effect, while center seams in front and back terminate in two kick pleats for reserved fullness where it will do



the most good. The pointed pockets with shaped turned over flaps are novel. You'll want to make more than one dress, because the pattern is so easy to follow and the fabrics so numerous to choose from. How about seersucker, novelty cotton, linen, crash or silk?

Barbara Bell Pattern No. 1916-B is available for sizes 12, 14, 16, 18 and 20. Size 14 requires 3½ yards of 39-inch material. Send 15 cents in coins.

Send for the Summer Pattern Book containing 100 Barbara Bell well-planned, easy-to-make patterns. Exclusive fashions for children, young women, and matrons. Send 15 cents for your copy.

Send your order to The Sewing Circle Pattern Dept., 367 W. Adams St., Chicago, Ill.

© Bell Syndicate.—WNU Service.

## Whims of Fashion

Wear a white jacket with your dark frock.

Linen is used for many tailored summer evening gowns.

The fashion of women's hats with real vegetables has reached London.

New paper weight crystal buttons, shaped into small balls, have bright colored pictures inside.

Newest version of smartness in toppers is the high crown hat that looks like a reversed flower pot.

When well chosen, and properly worn, the simplest nosegay may be as attractive as the most expensive.

To the list of accessories that fashion is matching with colored gloves, Molyneux adds tinted stockings.

Worth sponsors for the beach a suit consisting of a backless blouse, short jacket and knee-length bloomers.

# POULTRY

## ROTATING RUNS IS BEST FOR TURKEYS

### Limited Summer Range Area, More Green Feed.

By E. M. Funk, of the Missouri College of Agriculture.—WNU Service.

The summer range for turkeys should be limited in area, with temporary fences used in rotating the runs. An acre of good alfalfa or clover will be a sufficient area on which to raise 100 to 125 10-weeks-old turkeys to market age.

It is advisable to divide this one acre into four sections of approximately the same size, and rotate the runs, using each about two weeks before moving the temporary fence to another section. By rotating the runs every two weeks, more green feed will be provided, and this is regarded as a more sanitary practice. A five or six-foot fence is usually high enough to keep the turkeys confined, especially when they are provided with plenty of feed. Should they give too much trouble in flying, their primary wing feathers can be clipped.

Unless natural shade is available, artificial shade should be provided during the summer and early fall months. Protection from the sun may be provided by an arbor of straw or brush. During hot weather, a large consumption of feed can be secured if water containers and both grain and mash hoppers are kept in the shade.

Throughout the feeding period of both young and old stock, every sanitary precaution should be taken against disease and parasites.

## Offer High Quality Eggs on the Roadside Market

Poultrymen who sell eggs at roadside markets should offer only the highest quality product, says J. C. Taylor, associate extension poultryman at the New Jersey College of Agriculture, Rutgers university.

Roadside stand patrons will pay fair prices for good quality, Taylor reminds poultrymen, and many producers have built up a year-round market through a reputation for being reliable.

His suggestions to poultrymen operating roadside markets follow:

Sell only infertile eggs. This means that no male birds should be with the laying flock.

Collect eggs twice a day and store them in a cool, clean cellar away from strong odors. Exposing eggs to extreme fluctuations of temperature causes rapid evaporation of their contents.

Sell all eggs in cartons—not in paper bags. The carton provides a means of advertising, reduces breakage, and makes handling easier.

## WITH POULTRYMEN

All poultry is 11,000,000 pounds short of last year.

Size of the egg depends on the hen's breeding; size runs in the blood.

Paralysis is still a mystery. There is no general agreement as to cause.

A permanent pasture for turkeys saves money for the poultryman and benefits the turkeys.

Dark combs may indicate enteritis, blackhead, ptomaine poisoning or congestion of the lungs; also liver disease.

Chicks that are confined are more likely to develop cannibalism than those that run out-of-doors early in life.

**OPEN DEALING**  
Much of our dissension is due to misunderstanding, which could be put right by a few honest words and a little open dealing.—Black.



**Love Inspired Burns**  
Robert Burns never wanted to write poetry until he fell in love.



**Right Thinking**  
Peace is the just reward of right thinking.



## Watch Your Kidneys!

Be Sure They Properly Cleanse the Blood

**YOUR** kidneys are constantly filtering waste matter from the blood stream. But kidneys sometimes lag in their work—do not act as nature intended—fail to remove impurities that poison the system when retained.

Then you may suffer nagging backache, dizziness, scanty or too frequent urination, getting up at night, puffiness under the eyes, feel nervous, miserable—all upset.

Don't delay? Use Doan's Pills. Doan's are especially for poorly functioning kidneys. They are recommended by grateful users the country over. Get them from any druggist.

## DOAN'S PILLS

WNU—13 32—36

## When in the Northwest HEATHMAN HOTELS

In the hub of Portland, Oregon's shopping and theatrical center, these two splendid hostels offer you every luxury and comfort at extremely moderate cost.

**BEST IN THE WEST**  
Portland's newest and finest hotels...located in the hub of the shopping and recreational district...are the unquestioned choice of experienced travelers.

530 ROOMS from \$2.50 up



THE NEW HEATHMAN BROADWAY AT SALMON THE HEATHMAN BROADWAY AT SALMON HARRY E. HEATHMAN, MANAGER

## PORTLAND OREGON