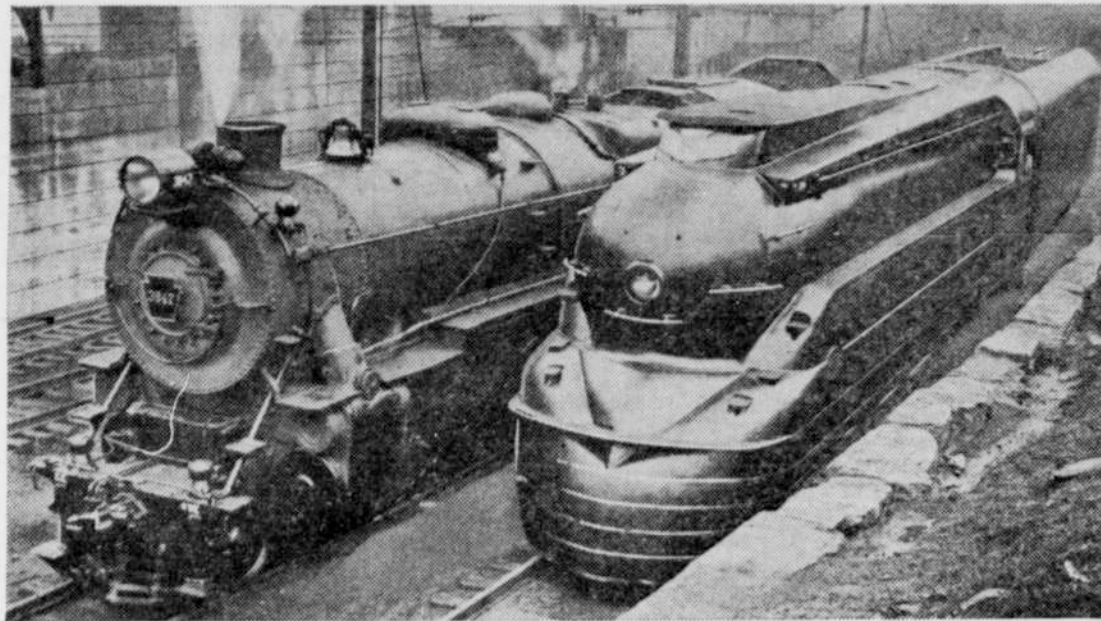


Newest Locomotive Compared With the Old Type



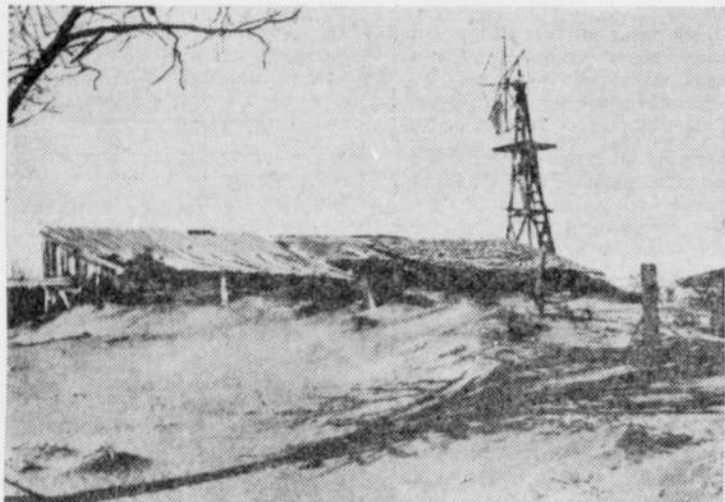
The newest streamlined steam engine of the Pennsylvania railroad is shown here with the old standard heavy-duty engine. The new locomotive, said to be "the most highly perfected and advanced engine design yet produced by aerodynamic science for the reduction of wind resistance," is reputed to show a reduction of one-third in wind resistance at a mile-a-minute speed.

Parisians Test the Bomb Shelters



When and if France gets into another war the inhabitants of Paris will have plenty of shelter from airplane bombardment. Numerous bombproof underground rooms have been constructed and fitted up in all parts of the city. This photograph shows a group of residents in one of the shelters capable of holding 52 persons for four hours.

Ranch Buried in "Black Blizzard"



Parts of Oklahoma, Texas and New Mexico have been scourged by recent "black blizzards" similar to those devastating dust storms of 1935, which laid waste many farming sections of the southwest regions of the United States. The picture shows an accumulation of soil about the outbuildings of a ranch situated near Dalhart, Texas. In some sections of the Southwest slight rain fell, which quickly converted the dry dust into sticky mud.

Where Are the Famed Banks of the Wabash?



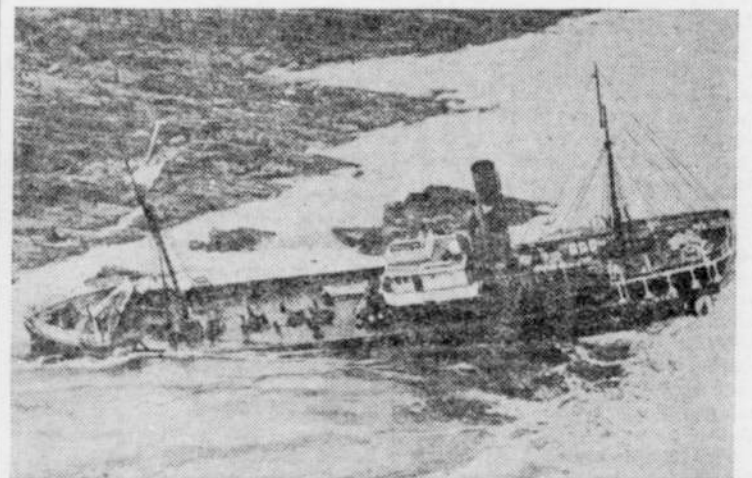
View taken from an airplane as it flew for many miles along the Wabash river near the Indiana-Illinois state line. Farm lands, houses and barns were almost completely submerged by the destructive spring floods.

Vancouver Hindus Cremate Their Dead Publicly

Although they are dressed in the manner and mode of the western hemisphere, the members of this Hindu colony on Vancouver island still cling to their old world customs. One of them is the public cremation of their dead. The body, covered with a sheet, is placed on a pile of cordwood, and when the last rites of the Hindu faith are performed, additional wood is placed over the body and the entire mass set afire. In this picture the last rites are being said over the body of Karmal, the wife of Kartar Singh.



"Floating Fish Factory" Wrecked



The French trawler Neptune, called the "Floating Fish Factory," is shown awash after she was wrecked on the treacherous Reppoch rocks off the island of Hoy, Orkney islands. The crew of 41 was rescued by a lifeboat from the island and the huge trawler pounded to pieces on the rocks.

Tame Duck Eats at Table With Family in Maine

Augusta, Maine.—There are three to consider in the family of Mrs. Edward B. Coyne—the third being their snow-white duck which "talks" and "sings" and eats with them at the table. The duck is placed on a stand, and quacks in time to music. When spoken to it seems to understand, and "answers" by a series of quacks.

The duck follows Mr. Coyne like a pet dog, has accompanied him on shopping trips, and never strays.

Okapi a Forest Animal

The okapi is a forest animal of shy, secretive and nocturnal habits and is found only in a limited area of the Congo. Inhabited mainly by pygmy black men who are extremely hostile to white people.