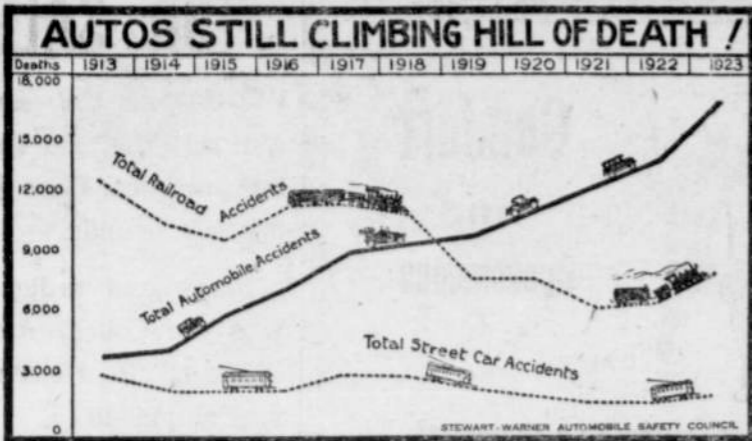


Auto Tragedies Increase as Other Travel Is Made Safer



WHILE railroad tragedies and street car accidents in the United States have gradually been diminishing in the last ten years, the annual toll exacted by automobile casualties is steadily mounting, says the Stewart-Warner Safety Council for the prevention of automobile accidents. Railroad accidents have been cut more than one-third, or from 12,520 in 1913 to 8,078 in 1923, the latest government figures available. Street car fatalities also have been cut down one-third or from 3,090 in 1913 to 2,000 ten years later. Automobile deaths, on the other hand, have increased over five-fold. Against the 3,822 deaths in 1913 we have 10,452 in 1923, and the score is growing each year.

Care, more care and still more care, is the solution of this national problem. The pedestrian must be always on the alert and as spry as a kangaroo, if he is to keep out of harm's way, and the driver for his part must never relax his vigilance for a moment when human lives are at his mercy.

Better Bread From Hard Kernels

That hard, vitreous kernels of wheat have superior qualities for bread making when compared with the starchy grains of the same class of wheat is indicated by a series of tests recently made by J. H. Schollenger and D. A. Coeiman of the United States Department of Agriculture. This belief was recognized when the official United States grain standards were promulgated, and the percentage of hard and vitreous kernels was taken as the basis for establishing subclasses for the hard red spring, hard red winter durum, white wheat classes.

Cow Chemistry

If a heavy milking cow does not get sufficient calcium (lime) in

her feed she will take it from the reserve supply in her bones in order to put it into the milk. This drain on the cow's body has a serious effect on her health, and ultimately reduces her capacity for milk production and the bringing forth of normal, well-developed offspring.

If the diet of the milking cow contains sufficient assimilable calcium but not enough phosphorus, she will at first take phosphorus from her soft tissues to put into the milk. This supply, however, is soon used up, and the cow then begins to take phosphorus from her bones. The chemical composition of the bones being not easily changed, when phosphorus is taken from them

calcium comes along with it in proportion of two parts by weight

to one of phosphorus. Calcium coming from the bones in this way and not used for milk secretion is lost in the manure. Thus a cow may lose calcium from her body on account of shortage of phosphorus in her diet.

TREHARNE SOCIETY NEWS

Fred Fenims of Ridgefield Wash., was a week end visitor at the home of Wm. Prutzman.

Mrs. Ed Lisenby, has returned home from a few days visit to Astoria.

Mr. and Mrs. A. P. Schomer, Miss Cleo Seimans and Bell Reinhart of Vancouver were week end visitors at the home of J. Cleve Moore.

Mrs. J. Cleve Moore, entertained at cards Saturday night. Luncheon served everybody had a good time.

Home Pointers

(From School of Home Economics—O. A. C.)

A water spot on silk crepe often disappears if the finger nail is rubbed lightly over the discoloration.

Curdling of mayonnaise is averted by adding 1 tablespoonful of cold water to the egg yolk before using any oil.

A bar of soap and a hand towel near the kitchen sink save many trips to the bathroom to wash the hands.

Memorandums are jotted down quickly if a pencil and pad are hung in a convenient place in the kitchen.

To hold the hot iron in place for steaming velvet, the sleeve board is slipped through the handle of the electric iron which stays firmly in place with flat surface up.

A vacuum cleaner is useful to transfer feathers from one pillow to another. The new pillow is fastened in place of dust bag and nozzle inserted in the other pillow.

An ink spot on a rug is often removed by rubbing with a piece of raw potato.

Progress in bringing new blood to Oregon's farm lands is marked by the annual report of the land settlement department of the state and Portland chamber of commerce directed by W. G. Ide, which shows that during the fiscal year ending September 30, 909 families have been located on farms in various parts of the state, and that the money invested by these newcomers totals \$2,999,718.

The program of the land settlement department has been in operation for the past three and one-half years, during which time 2,228 families have been placed on Oregon farms directly through the efforts of the department. According to Mr. Ide, the initial capital investment of this body of settlers is \$8,697,140.

In the work of securing the proper growth and development of Oregon by getting its farm lands occupied and used, the cooperation of realtors and commercial clubs in the counties of the state is providing a great factor. That every section of Oregon is organized for action to make this work effective is shown by a portion of the annual report which shows 28 counties accounting for the distribution of these home-seekers. In 604 cases the county of location has been reported by the local commercial organization, and but 305 of the 909 families were not so listed. These 305 were shown by the department's own records to have found their homes in these 28 counties and the remaining eight of the 36 counties of Oregon. Where the closest cooperation has been carried on by the local organizations with the Portland office, the greatest results are shown.

Lane county took the lead in reporting newcomers for the year, its record showing 102, while Marion ran second with 87 and Josephine followed a close third with 79. Benton reporting 45 almost tied with Jackson which listed 44. Clackamas exceeded Washington county by two showing 38 to the latter's 34.

The number of settlers settling in each county according to the report of the local organizations, is as follows: Benton 45, Clackamas 38, Clatsop 3, Columbia 19, Coos 6, Crook 3, Deschutes 15, Douglas 27, Hood River 2, Jackson, 44, Josephine 79, Klamath 11, Lane 102, Linn 15, Marion 87, Morrow 4, Multnomah 30, Polk 2, Malheur 2, Tillamook 2, Lincoln 3, Harney 1, Umatilla 4, Union 1, Mallowa 3, Washington 36, Yamhill 19 and Wasco 1.

The department is now in correspondence with thousands of farmers in the east, middle west and southwest where the diversity of Oregon's resources and desirability of her farm lands are now becoming well known. During the past fiscal year, the department handled 57,102 letters and inquiries from outsiders, directed to the department, and 11,082 referred to the department by the railroad companies. More than 47,000 pieces of literature were mailed out from the Portland office, the local chambers following this service with material descriptive of their own districts.

From Paymaster To SAVINGS



Do you make the trip each payday from paymaster to savings? It is a journey that will bring its own reward, for it leads to financial independence later in life, when your productive days are over.

Bank of Vernonia
VERNONIA, OREGON

A Good Recommendation---

Mist, Oregon
Nov. 15, 1926.

To the public:

In answer to the repeatedly asked questions regarding the Service Dairy, I make the following statement:

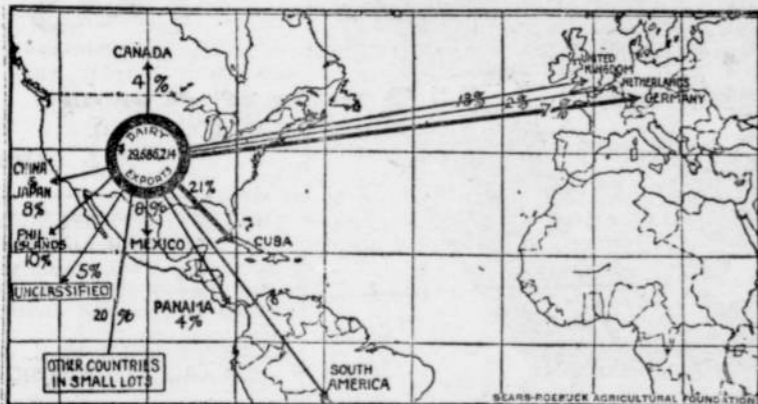
All dairy cattle passed the tuberculin test. Dairy barn, milk house and handling of milk sanitary. I might add that Mr. Forsberg, the owner, is working hard to keep the dairy at a high standard.

L. H. ROTHLSBERGER
Columbia County Herd Inspector

SERVICE DAIRY

O. P. Forsburg, Prop.

\$29,686,214 in Dairy Products and Eggs Shipped Out of U. S.



Dairy products and eggs valued at \$29,686,214 were exported from the United States in the year ending June 30, 1926, according to a statement on the export situation issued by the Sears-Roebuck Agricultural Foundation. Canned milk topped the list, with eggs second, cheese third and butter fourth. The principal export market for these products proved

to be Cuba, which took two-fifths of the eggs shipped abroad and was next to the United Kingdom as a buyer of canned milk. Great Britain was the second largest customer for these products, with the Philippine Islands in third position. Mexico, Germany, China and Japan, Panama and Canada were the other markets which bought the surpluses of these products.

COLLECTIONS NO COLLECTION—NO CHARGE KNIGHT ADJUSTMENT CO.

We Get Results. Offices at McMinnville, Hillsboro and 502-Board of Trade building, Portland.

new bread—home made with Wild Rose Lard

You'll get better results than ever before by rubbing the outside of the dough with warm Wild Rose Lard before setting to rise.

The absolute freshness and purity of this natural shortening make it ideal for every cooking purpose.



WILD ROSE Frye's pure LARD

A Perfect Shortening for Every Purpose

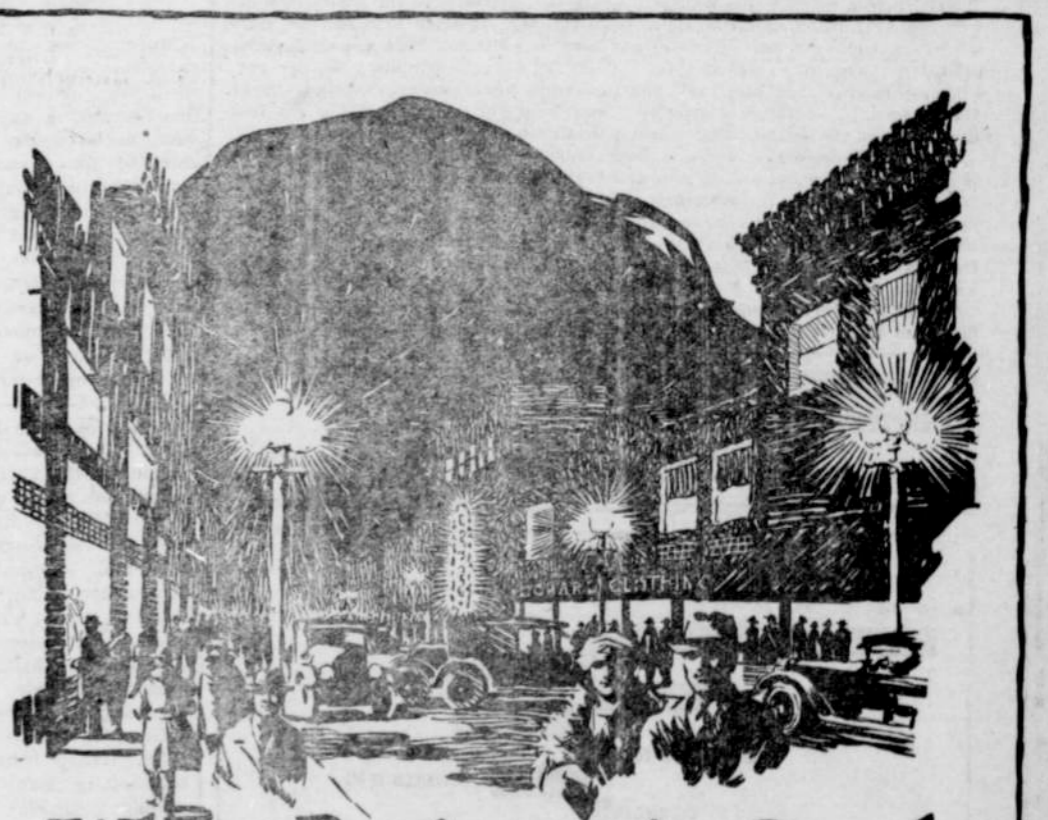
Brown Truck and Transfer

Local and Long Distance Hauling.

Ice and Cold Storage

Storage for Furniture and Baggage

Tel. No. 683. Office Corner Bridge and Weed Ave.



When Business is Good

SATURDAY night is a mighty good time to ask yourself this question: "Is our community sending more money out of town than is coming in each week?" Of course the only safe answer is "NO!"

This means that we folks in this neighborhood must patronize local supply men and merchants if we expect our town to prosper and "stay on the map."

Frankly, it means that every citizen will find it most profitable to read the advertisements in this paper every issue, and to follow their good advice.

Our advertisers are all personally interested in this town—and in YOU. They are helping you build a better home community. When business is good, their profits are being shared with you in an endless chain of co-operative betterment.

Read the Ads in this Paper and save yourself money by trading at home