

West Coast Electric Co.

Goods of Merit, Only

Our stock is complete in
Furniture, Stoves, Ranges
All Kinds of Kitchen Utensils
Carpets and Rugs

20 per cent. discount on
Wall Paper
September 3, 4, and 5

Jones-Knudsen Furniture Co.

MORRIS SCHNAL

Popular Priced
Clothier



REMEMBER THE NAME "HUNKI-DRY" STANDS FOR THE BEST BOOTS ON EARTH. ARE NOT FIRE PROOF BUT AS NEAR WATER PROOF AS CAN BE MADE FROM LEATHER.

Men's and Boys Fine Clothing, Boots and Shoes, Hats, Furnishing Goods, Etc

PIONEER STABLES

Dawson Brothers, Proprietors

Livery, Feed and Boarding

Transferring and Express Good Teams and Drivers

Grain, Mill Feeds, Hay, Grass Seeds, Poultry Supplies

Lath, Shingles and Cement

The Tillamook Feed Co.

Tillamook, Oregon

Farm Implements and Machinery of All Kinds and Makes
Wagons and Buggies

A. A. PENNINGTON

Welcomes Fair Visitors to His Store

MILLINERY, DRY GOODS, CLOTHING, LADIES AND GENTLEMEN'S FURNISHINGS, SHOES

Still Located At the Former MASON-PENNINGTON STORE

John E. Henderson, Pres. Surveyor

John Leland Henderson, Sec. Treas. Attorney at Law Notary Public

Tillamook Title & Abstract Co.

(Incorporated)

LAW ABSTRACT REAL ESTATE SURVEYING INSURANCE

Both Phones

TILLAMOOK, OREGON

J. F. STRANAHAN

Resident Architect and Superintendent

Plans for All Kinds of Buildings. He can save twice the cost of his services on any kind of building. Mr. Stranahan is a Tillamook property owner and lives here.

"THE ELECTRIC STORE"

Tel. 130 J

Tillamook

TOWNS OF THE COUNTY

Gloverdale and the South End.

While mentioning the various parts of our county we would not overlook our neighbors south of us. To them Tillamook City is indebted to some extent for their liberal patronage and loyalty to the county and its varied business institutions. Of its resources and advantages columns could be written and half would only be told, so rich are the elements that go toward building up a prosperous community.

At Beaver, the first town south, the citizens have gone farther than dairying, although dairying is the great source of revenue to the ranchers the same as other parts of the county, they are developing a new field to add riches to their already well filled store houses of wealth. This new field is the culture of loganberries. Several acres have already been set out to this fruit, and an organization perfected and incorporated to build and maintain a dryer. The association will market the product and otherwise be of advantage to the grower.

Farther south, and the business center of the south half of Tillamook county is the village of Cloverdale. This village has been the trading point of the southern part of the county since it was first made a business point or a place where business could be handled. From a small beginning it has grown until today it is one of the bright and busy spots of which this county may well feel proud. Without doubt the largest mercantile stock carried in the county is at this place and with its central telephone office, water works, electric lights and a weekly newspaper besides other business enterprises, it is in importance second only to the county seat.

The beautiful homes on the ranches and in the village above referred to bespeak the success of those who have put their shoulder to the wheel in building up and improving this section of the county.

Aside from dairying, salmon fishing is carried on very extensively and the Big and Little Nestucca rivers have yielded to the fishermen the product which has made the pockets of many a man jingle with the yellow metal. One of the largest canneries on the coast is established on the Nestucca bay and during the season its capacity is taxed to handle the catch.

As to beach resorts, much can be said of the beauty spots, the natural beauty spots of the beaches hereabouts. Pacific City and the beach fronting on the ocean some day will be the promenade park of the city man who can afford to spend his vacation breathing the exhilarating atmosphere of a mountain zephyr and a sea breeze blended together.

At the extreme south part of the county is the famous Neskowin resort, formerly the Salem Camp grounds. In reaching this place one travels over a road fully a mile in view of the ocean and the grazing grounds of the tide-flats which blend together.

To fully comprehend the wealth and beauty of Tillamook County one must traverse the southern half through the Nestucca Valley.

Nehalem City and Vicinity.

Nehalem City is the principal industrial and commercial center in the Nehalem Valley. It has a population of 250 inhabitants and is located on the west side of the Nehalem River on the opposite bank of the Southern Pacific R. R., from which point a road and steel bridge will connect the town with the railroad at a distance of 14 miles, the same having been approved and adopted by the County Court.

The town of Nehalem is naturally sheltered from the southwest and north-west ocean winds, located so as to be immediately tributary and accessible to all parts of the valley. It is 95 miles by rail from Portland and 28 miles from Seaside. It has a gravity water system with five and six-inch mains and taking its water from a mountain creek two miles distant, having 90 pounds pressure in town. It has a volunteer fire department with regulation equipment. The town has a live commercial club which co-operates with the residents of the valley in furthering the interests of Nehalem in general. It has one bank, two hotels, one saw mill, a large general merchandise store, a clothing store, confectionery, butcher shop, livery stables, feed store, blacksmith shop, barber shop, skating rink (the largest in the county) and two saloons, a doctor, a modern drug store and an attorney, one high school, two elementary schools, a public hall, town hall and M. E. Church.

Two and one-half miles west of the town is the famous Neah-san-nie Mountain. This mountain is 1,790 feet above sea level and is so inspiring in scenic effect as to surpass any summer resort on this or the Atlantic Coast.

South of the mountain for a distance of seven miles is a most picturesque beach about one-half mile in width at low tide, which extends to the mouth of Nehalem Bay, it being equal to any beach on the Pacific Coast. A combination that would appeal especially to the summer visitor is fishing, hunting, driving and launching all of which, and more, is abundant at Nehalem. The summer resorts have excellent hotel accommodations.

The New City of Wheeler.

Wheeler Oregon is one of the new towns of Tillamook County. It has come into existence because of the changes in transportation facilities. Its present development is a result of the completion of the railroad and its future will be a consequence of better railroad facilities and improved water transportation.

The city of Wheeler is situated on the south side of Nehalem Bay about 5 miles from the mouth of the Bay and at the head of deep water navigation on the Bay. It has the railroad along its entire frontage thus giving to the manufacturers and merchants of Wheeler both rail and water transportation. This fact combined with the fact that the best sites on the Bay for mills and booming grounds are situated on both sides of Wheeler, assures the contention of the people of Wheeler that their city will become the big manufacturing city on Nehalem Bay.

When one considers that tributary to Nehalem Bay there is Twenty Billions of feet of the finest timber awaiting improved transportation facilities, one can readily realize that the future of Wheeler is well assured.

The City of Wheeler, although only about one year old, is already becoming quite an industrial center. Located at Wheeler is the fine big new plant of the Wheeler Lumber Company, one of the richest companies doing business in Tillamook County. This new saw-mill plant will be ready to cut lumber within 60 days. It will have a capacity of 150,000 feet of lumber per 10 hours and will be equipped with the most modern machinery available. The same company also operates a large planing and finishing mill. When the new plant is completed and in operation the company will employ about 225 men in the mills and about 150 men in the woods. Also located at Wheeler is a shingle mill of 90,000 shingle capacity employing 25 men. The Union Fishermen's Cooperative Packing Co. operate a fine salmon cannery at Wheeler employing only white labor. This cannery pays out about \$45,000 per year.

Wheeler is the commercial center of the Nehalem Valley and draws a large part of its support from the dairying industry and other businesses of the Nehalem Valley. Located at Wheeler are 3 general merchandise stores, a drug store, a large dry-goods store, a fine hotel, a substantial bank, a newspaper, 2 saloons, restaurants, a livery stable, meat market, pool rooms, barber shops, rooming houses, a doctor and an attorney. A building for a laundry and a bakery is now almost completed and construction on a show building is just being started. The Wheeler school-district is now building a fine new school building, having appropriated \$5000 for this purpose. A fine gravity water system supplies the town with fine mountain water and gives to Wheeler adequate fire protection. Wires for electric lights are being strung and electricity will be supplied by the Wheeler Lumber Co. A public dock has been dedicated for public uses and the City is now grading a number of the streets.

The principal property holders in Wheeler are offering special inducements to people who will come and make their home in Wheeler. The City Council by cooperating with the principal property holders are able to offer especially attractive propositions to any one who will bring new payrolls to Wheeler, by offering free sites for such industries and mills. This matter is being handled as a public matter and inquiries concerning locations for mills and factories may be addressed to either the Mayor or the Recorder of the City of Wheeler.

Bay City

Bay City is a town of great latent possibilities, soon to be developed, if reports are true, into realities. At present the town has a population of some 300. It is located on the east shore of Tillamook Bay, is on the main line of the P. R. & N. R. R. between Portland and Tillamook, 100 miles from Portland and 6 miles from Tillamook.

With the Sparkling Bay stretched before it and the forest clad coast range in the close background, Bay City is snuggled into one of nature's beauty spots, that can nowhere be ex-

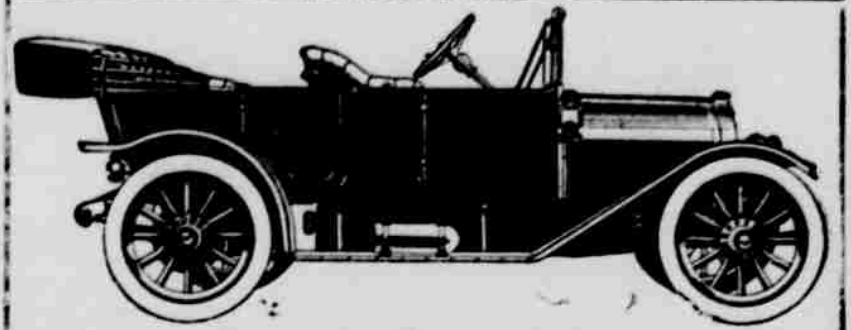
The Tillamook Drug Store

E. E. KOCH, Ph. G. KOCH & HILL BOTH PHONES

We Guarantee Satisfaction
or Money Refunded

Your Prescriptions Compounded With the Purest
Drugs and Just What the Doctors Order.

Best Treatment Best Prices Prompt Service



ED'S GARAGE
ED. SNODGRASS, Proprietor
Mutual Phone Bell Phone 110w

Tillamook Meat Co.

M. F. LEACH, Manager

Butchers and Packers

Special Attraction Sept. 3, 4 and 5
... AT THE GEM THEATRE ...

THE GREAT LAZERN CO.

Magic, Mirth and Mystery

The Talk of the Twentieth Century

Matinee Every Day, Doors Open At 2 O'clock
Evening Performance Doors Open At 7:30

All Kinds of Painting, Tinting, Finishing and Paper
Hanging

E. N. Cruson & Company

Painting Contractors

PAC. PHONE 78J

TILLAMOOK, OREGON

LAUNCH OLIVE

FOR TRIPS TO BAY POINTS

| | | | |
|-------------------|---|---|-------------|
| Leave Tillamook - | - | - | 8:45 A. M. |
| " Bay City - | - | - | 10:00 A. M. |
| " Garibaldi - | - | - | 10:20 A. M. |
| " Bayoccan - | - | - | 10:40 A. M. |

Arrive at Tillamook 12:00 Noon

| | | | |
|-------------------|---|---|------------|
| Leave Tillamook - | - | - | 1:45 P. M. |
| " Bayoccan - | - | - | 3:00 P. M. |
| " Garibaldi - | - | - | 3:30 P. M. |
| " Bay City - | - | - | 3:50 P. M. |

Arrive at Tillamook 4:45 P. M.

W. D. GLADWILL

CITY DAIRY

Milk, Cream, Sour Milk, Cottage
Cheese

Prompt Attention Given All Orders

Phone Orders—Both Phones.

TILLAMOOK, OREGON