

NEHALEM REVERTS TO KEROSENE LIGHT

LACK OF FUEL CAUSES SHUT DOWN OF LIGHT PLANT

Nehalem Artisans Attend Meeting at Seaside.—Other News of Interest

NEHALEM, Nov. 2.—(Special)—Nehalem and Wheeler have had to rely on the kerosene lamps and moonlight for the past four nights owing to lack of fuel to run the dynamo at the Wheeler mill. The moonlight nights are much appreciated but for household use, electricity is better. If the Coast Power or some other enterprising company would build into this vicinity they would meet with much encouragement.

An invitation from the Seaside Assembly of United Artisans to Nehalem Assembly No. 469 was accepted by about fifteen members who drove over Thursday afternoon and attended initiatory exercises that night. They reported an enjoyable time and all except four returned the same night.

R. A. Crawford, who has been ailing for the past month or more, is at a sanatorium in Portland and is reported as slightly improved, though still confined to bed.

Governor Olcott was in our city last week looking after matters political. H. M. Farmer was also greeting the voters one day recently.

Mrs. William Crawford, who has been quite ill for several days, is now much improved.

J. V. Thompson who has been confined to his bed by illness the past week is now able to be about again.

Herman Wise of Astoria, who made his first visit to Tillamook county when he attended the K. P. meeting at Tillamook last week, stopped over here to visit friends and incidentally wait for transportation home. He says he has lived in Astoria almost his entire lifetime and never got over the line into Tillamook county. Mr. Wise is ex-mayor as well as ex-postmaster of Astoria, having served in that capacity during Wilson's administration.

W. D. Tohler, Bert Ross, Frank Ross and William Perego drove over to Corvallis last Friday night to witness the football game Saturday. They returned Sunday night coming by way of Albany, Portland and Astoria.

Arthur Hodson, who was injured while working at camp 4 last Tuesday, is somewhat improved at this writing and expects soon to be able to get around.

No work has yet been done on the Todd bridge connecting Wheeler and Nehalem, but we understand that much of the timbers for its construction have been ordered

form Brighton Mills Company and are all ready for delivery. Work will no doubt be rushed when the weather permits in the early spring.

HIGH SCHOOL NOTES

Upon resignation of Noah Richards as Chief Editor of the high school annual, Ramona Haltom, former assistant editor has been elected to fill this position. Carlisle Stranahan was elected to take Miss Haltom's place as assistant editor. Students desiring annuals are requested to place a deposit of fifty cents with the staff.

The Juniors held a candy sale October 30, the proceeds are to go towards the annual. No contracts are to be let for printing, engraving etc., until the money is raised. In this way the high school will pay for its own annual and the burden of debt will not be thrust upon the student body next year.

The foot ball team has returned from Oregon City where they were defeated 6 to 0 by the high school team of that city. Coach French says that Tillamook outplayed the Oregon City boys throughout the game, but luck was against them and Oregon City was allowed to push over the only touchdown scored by either side. The boys report a good time as the Oregon City High gave them a banquet and party.

Of the three foot ball games played this season Tillamook has been victorious in one. The student body hopes that the score will be evened next Saturday, November 4, when Seaside plays the local team at the fair grounds here.

A spirit of rivalry has sprung up between the classes. The seniors and sophomores have combined against the juniors and Freshmen in a ticket selling contest. The two classes selling the least number of tickets are to give a banquet to the winners.

Friday, October 27, the Zeta Gethian Society gave an interesting program in honor of Theodore Roosevelt. The program was as follows:

- Assembly, "America."
- Rev. Hamerick, Address.
- Paul Powers, Violin Solo.
- Rowena Hanson, Sayings of Roosevelt.
- Mary Lamar, Piano Solo.
- Gladys Hale, The World Wants Men.
- Alfred Coates, American Ideals, (Theodore Roosevelt.)
- Lula Thursen, Solo (Vocal.)
- Noah Richards, "My Country."
- Glenora White, Theodore Roosevelt.
- Assembly "Battle Hymn of Republic."

Poultry Show at Portland

Where is the farm that does not boast of at least a small flock of poultry? Whether you are interested in Leghorns, Plymouth Rocks, Rhode Islands, Minorcas, Anconas, Wyandottes, Cornish, Orpingtons, Brahmans, Bantams, Turkeys, Ducks, Geese, Rabbits or Pigeons, you will find them at the Western Winter Poultry Show, which is again being held in conjunction with the Pacific International Live Stock Exposition at Portland, November 4

to 11. There will be over 2,000 birds entered and approximately \$900 rabbits.

Guernsey Popular Breed

One of the most popular breeds of dairy cattle in the world is the Guernsey. Between England and France, there are a number of small rocky islands in the channel. On these islands two of our great breeds of cattle have originated, the

Guernsey and the Jersey. In their native islands both breeds are small and do not give a great deal of milk, but it is very rich in butter fat. The hope of the American breeders is to retain the high butter fat content and at the same time increase the milk flow. They have succeeded to a certain extent, a greater abundance of feed increasing the size of the animals, and the skill of the breeder preventing loss of type and

fineness. Both Guernseys and Jerseys are very strong classes at the Pacific International Live Stock Exposition this year.

STATEMENT

I have just been informed that an untrue report as to my church affiliations and those of Mrs. Churchill is being circulated in Tillamook county. I desire to say that I am

now, and have been for a number of years, a member of the Episcopal church, though my father and mother were Baptists. Mrs. Churchill is a member of the Christian Church. I may say further that Mrs. Churchill is known to hundreds of people in Oregon since she was graduated from the Oregon Normal School about the time that County Superintendent Lamb was graduated. She taught in several of the counties of

the state, the last six years of her teaching being in the city of Baker. She has never taught in a private or sectarian school. For fourteen years prior to her return to Oregon, after leaving Baker, she had charge of the business affairs of Doctor Frank Whetzel, 236 North Crawford Avenue, Chicago, Illinois.

Very respectfully,
Signed, J. A. CHURCHILL,
Supt. Public Instruction
Adv.

The Exposition Means Immediate State Development

YOU ARE ASKED to vote November 7 on a constitutional amendment authorizing the city of Portland to levy within the city a tax of one million dollars a year for three years to finance the proposed 1927 Exposition.

There is evidence that plans and purposes of the 1927 Exposition are not fully understood and this message is being published to give a more complete understanding and to gain state-wide approval of the Exposition plans.

- It should first of all be made plain that the proposed three million dollar tax to be levied in Portland is contingent upon the raising of a fund of one million dollars by private subscription—the men who are pioneering the building of the Exposition showing their own faith in a material way.
- The one purpose of the Exposition is the development of Oregon and Oregon resources.
- Oregon, twice the size of the state of New York and one of the richest sections of the world in natural resources, has less than a million population instead of the four or five millions which the state can easily support and which in turn would contribute to the support of the state.
- Oregon has fewer people than the city of Los Angeles.
- Oregon has only eight people to the square mile. California has 22 and Washington 20.
- Oregon is burdened with taxes and the one sure relief to the individual taxpayer is more people to develop more wealth to share the tax burden.
- Vast areas of Oregon soil, as fertile as the world contains, are untouched by the plow because the people of the world do not know of their fertility and opportunity.
- But these are facts we all know.
- We are all agreed as to the need of development in Oregon; now let us see what the 1927 Exposition can mean in bringing about that development:
- It is proposed that the 1927 Exposition shall be the central feature of a ten-year development plan for the state.
- The first essential of this plan is that the people of the East who can better their own conditions by coming to Oregon be made to know what Oregon can offer.
- It is planned, if the Exposition measure is approved at the polls, to begin, not later than 1924, a campaign of advertising which shall cover all the rich states to the east of us. This advertising is to appeal to farmers, stockmen, orchardists, manufacturers and tourists, telling each of these classes of the opportunities which Oregon offers them and inviting them to come and see for themselves. All this advertising will lead up to the 1927 Exposition, but it will be intended to attract not alone sight-seers but settlers and investors even before the Exposition.
- It is planned also to continue this development programme after the Exposition is ended and until 1934.
- It is proposed that the Exposition shall strongly feature the products and resources of Oregon, so that visitors will become interested in the state as a place for them to live and prosper.
- Each section of the state will be given an opportunity to benefit both by the preliminary advertising and by the Exposition itself.
- Railways will be asked to sell excursion tickets to the Exposition, which shall give the holders without extra cost a trip to other sections of the state which they may desire to visit.
- Each county in the state will be invited to participate in a carefully worked-out plan to direct attention to and create interest in all sections of the state.
- Those who sponsor the Exposition believe that these plans will insure a speedy and definite development of Oregon's vast resources by bringing together the entire energies of the state and by focusing attention upon the state.
- The welfare of every man, woman and child in Oregon is directly connected with state development. Adequate state development means increased prosperity, a better social condition, better markets, more comforts and conveniences, with reduced taxation.
- In the present condition of the United States and of the world at large, Oregon's state development will not come speedily unless well thought-out and aggressive plans are put into execution.
- The 1927 Exposition—as the concentration point of a ten-year development plan—is a definite, tangible movement for state-wide progress, and on this basis you can confidently give your approval to the Exposition measures to be voted on at the polls November 7.

Why the Exposition Has Been Set Forward From 1925 to 1927

The change of date from 1925 to 1927 has been made because it has been found impossible to build an adequate Exposition and to co-ordinate all its features in a general plan for Oregon development in the little more than two years between now and 1925.

1927 Exposition Committee

George L. Baker, Vice-Chairman Managing Committee

MANAGING COMMITTEE

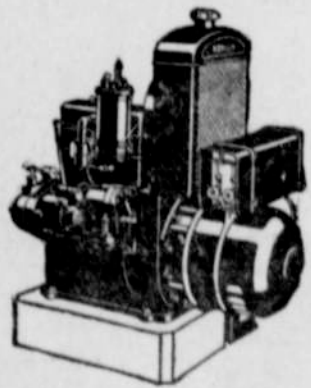
F. T. Griffith, Chairman
George L. Baker, Vice-Chairman
John F. Daly
Guy W. Talbot
Ira F. Powers

A. H. Lea
W. W. Harrah
F. C. Deckabach
William Hanley
Emery Otmstead

FINANCE COMMITTEE

Emery Otmstead, Chairman
Guy W. Talbot
Ira F. Powers
John F. Daly
David M. Danne
J. A. Cranston
R. E. Smith
Nathan Strauss

THIS ADVERTISEMENT IS PAID FOR BY FIVE HUNDRED OREGON CITIZENS



The KOHLER Automatic produces 110-volt current

The Kohler Automatic Power and Light Plant produces standard 110-volt electricity, and therefore allows you to use the same standard electric light bulbs and appliances used in cities. These appliances are available everywhere and cost less than those of lower voltage.

Coupled with this advantage of the Kohler Automatic is the feature of "no storage batteries." This does away with the trouble and expense of maintaining a large bank of glass-cell storage batteries. The only battery used with the Kohler Automatic is a small, automobile-type, for starting the engine.

Thus the Kohler Automatic gives you all the advantages of city electricity with the same convenience—simply turn any button on the circuit and you have electricity for power or light. Send for illustrated booklet. Come in and see the plant in operation.

No Storage Batteries 110 Volts Automatic 1500 Watts

R. F. ZACHMAN
Tillamook, Oregon