

NOTE—The Red Top tin contains Velvet that has recently been delivered from the factory. It is in fresh condition—cool and smooth in a pipe.



Each tin of
Velvet
TOBACCO
with the RED TOP

contains freshly made tobacco. Just right for your pipe.

And the mild smoothness you enjoy is the result of Velvet's two long year's ageing in wooden hogsheads. Patient ageing in Nature's way—the right way of removing raw harshness and bite.

You'll say that Velvet is cool, smooth and "sweet as a nut" in your pipe.

LIGGETT & MYERS TOBACCO CO.

Buy **Velvet** in the
TIN with the RED TOP

CLOVERDALE

J. A. Dawson of Tillamook was in our city Saturday.

E. S. Wright, merchant of Woods, was in Cloverdale Monday.

Solle Earl returned Monday from a trip to the valley.

Oral Ray is visiting in Tillamook this week.

Mr. and Mrs. C. C. Murphy made a trip to Tillamook Tuesday.

L. B. Antrim of Amity was here several days last week.

Charles Ray returned Saturday from a trip to outside points.

Mrs. K. Watson went to Portland Friday.

M. T. Henderson returned Monday from a short visit to Portland and Tillamook.

W. A. Penter, Lester-Ray and C. F. Shortridge went to Salem last Saturday on business.

Mr. and Mrs. W. A. Penter were in Tillamook Monday on a business trip.

Several Cloverdale people witnessed the fire in the I. O. O. F. building at Tillamook Monday.

F. J. Mietzke was in Portland on business last Friday returning on Sunday.

C. W. Hatfield and family left on Monday for the hop fields and prune orchards where they will spend several weeks.

J. L. Burke went out Monday to be with his son, Orrin, who is reported to be very ill with pneumonia in a Portland hospital.

Mrs. Cecil Roenicke came in from Portland for a short visit with relatives and friends and returned Monday morning.

Nels Haglund opened a restaurant Monday in the I. O. O. F. building, and is now serving meals regularly.

Mr. Wilson, fire insurance adjustor, was in Cloverdale Saturday to adjust the loss of the drug store here, caused by the hotel fire last Friday.

Floyd Light with some other young people while on their way to Tillamook last Saturday evening had a collision. No one was hurt except the fliver, which was crippled.

Miss Fay Murray of Portland, who has been spending the summer with Mrs. Andrew Anderson of Cloverdale, returned to her home Monday.

Our school opens Monday, September the 4th. One of the high school teachers, H. C. Miller came in Tuesday with his wife. They will live in the Greene house during the winter.

Mr. and Mrs. Roland McGinnis, accompanied by Miss Mary Fox and Mr. and Mrs. F. L. Owens, went out to Portland last Tuesday. Mr. and Mrs. Owens will go to Minnesota where they will visit Mr. Owen's mother, whom he has not seen for several years.

The W. C. T. U. gave an excellent program in the high school auditorium last Friday night, for the benefit of their Farm Home. While it was all good, yet there were two persons who merit special mention. One, John A. Kuntz, who sang a solo, there are few his equal as a vocalist. The other, Prof. Kelsaw of Chicago, who was taking a few days vacation at Beaver, and who is a great pianist, rendered several classical pieces. Many who love high class instrumental music were delighted.

CARD OF THANKS

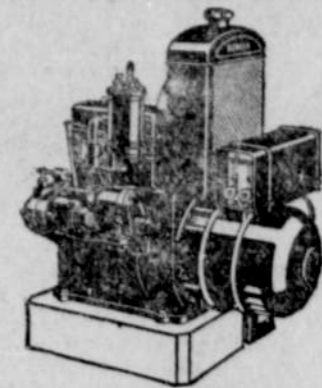
We wish to thank our friends for their sympathy and the floral offerings during our late bereavement.

Eric Gulstrom.
John Zurfluch and family.

The Tillamook County Creamery Association quotes prices on feeds and grains as follows:

	Ton	Sack
Sure Milk	\$44	\$2.25 100s
Molasso Meal	42	2.25 100s
MHI run	34	1.35 75s
Off cars	32	
Oats, corn, barley	40	1.90 90s
Oats and barley	42	1.80 80s
Corn, any style	40	2.10 100s
Process barley	45	1.85 75s
Flour middlings	60	3.50 140s
Sunshine flour		1.75
Hard wheat flour		2.00
Wheat	45	2.50 100s
Albers oats & barley	34	1.45 80s
Linseed oil meal		2.95
Clover hay, \$21 and \$22.		
Oats and Vetch hay, \$22 and \$23.		
No. 1 alfalfa, \$23.		

TILLAMOOK COUNTY CREAMERY ASSOCIATION



The KOHLER Automatic produces 110-volt current

The Kohler Automatic Power and Light Plant produces standard 110-volt electricity, and therefore allows you to use the same standard electric light bulbs and appliances used in cities. These appliances are available everywhere and cost less than those of lower voltage.

Coupled with this advantage of the Kohler Automatic is the feature of "no storage batteries." This does away with the trouble and expense of maintaining a large bank of glass-cell storage batteries. The only battery used with the Kohler Automatic is a small, automobile-type, for starting the engine.

Thus the Kohler Automatic gives you all the advantages of city electricity with the same convenience—simply turn any button on the circuit and you have electricity for power or light. Send for illustrated booklet. Come in and see the plant in operation.

No Storage Batteries 110 Volts Automatic 1500 Watts

R. F. ZACHMAN
Tillamook, Oregon

EVERYWHERE autos or trains or boats go in this country you can present Travelers' Checks, and know they will be accepted upon your writing your countersignature. They are very convenient because they make you independent of banks and banking hours, and are accepted by hotels, stores, ticket offices, etc. They remove the risk of robbery, and make it possible to carry a large sum of money in small space.

DIRECTORS
John Morgan W. J. Riechers.
A. W. Bunn B. C. Lamb.
Henry Rogers C. J. Edwards.
C. A. McGhee

The First National Bank
TILLAMOOK OREGON

Great Western Transportat'n Co.

PORTLAND—TILLAMOOK

Two Trucks Daily

Special rates on household goods and bulky commodities

Rate: 55c per hundred

John Mathers, Agt.

For good meal and
real service

BUNGALOW CAEE

FIX AND FIT SHOP

George J. Burckard, Manager

Sheet Metal and Plumbing Work
of all descriptions

Hot Water and Steam Heating
Pipe and Pipeless Furnaces

We Repair Radiators and
Do Guarantee Them

"QUALITY AND SERVICE" OUR MOTTO

SCHOOL WILL SOON COMMENCE



Were your children backward in their studies last year? If so, it may be due to Eye trouble of some kind. Bring them to Dr. Turner of Tillamook, and it will cost you nothing to have their eyes examined. If there is trouble he will correct it at a very reasonable cost. If not he will tell you so frankly. You owe this to your children. 44-4t

FUNDAMENTAL

MUSIC

TRAINING

Taught by

MRS. E. E. KOCH

MISS MARIE HOLDEN

Assistant Teacher

Every child should have a good foundation to promote the building of a good musical education.

Special attention is also given to advance work.

Arrangements are now being made for the term beginning September 4th.

PHONE 11W

PRICE ON TILE REDUCED TEN PER CENT. TILLAMOOK CLAY WORKS. 461t

ONLY \$5.75

TILLAMOOK

to PORTLAND

and return

Sales dates:

Friday and Saturday

Return limit:

15 days from sale date

Ask Agent About

Season Fares

Travel now and realize big

profits in transporta-

tion costs

Southern Pacific Lines

John M. Scott

General Passenger Agent

Dinner is Served

THERE is always something mighty good waiting for you to eat—tender roasts, delicious vegetables served in the most appetizing ways, creamy, fluffy potatoes, piquant salads and dainty desserts.

Have breakfast, lunch or dinner with us. You'll be delighted with the excellent food, the quick service, unfailing courtesy and unusually reasonable prices.

TORIST CAFE

CHIROPRACTIC
THE BETTER WAY TO
HEALTH

Forest L. Howard
CHIROPRACTOR

Graduate nurse in attendance
211 Tillamook Building
Both Phones

Go to
CHURCH
for
Insurance