

NATIONAL.

FOR ELECTORS OF PRESIDENT AND VICE-PRESIDENT OF THE UNITED STATES			Vote for Five
12	M. C. GEORGE, of Multnomah County	Republican	For President WARREN G. HARDING
13	CLARENCE R. HOTCHKISS, of Multnomah County	Republican	
14	JOSEPH HUME, of Linn County	Republican	
15	JOHN Y. RICHARDSON, of Multnomah County	Republican	For Vice-President CALVIN COOLIDGE
16	WALTER L. ROBB, of Multnomah County	Republican	
17	OSCAR HAYTER, of Polk County	Democratic	
18	DR. E. T. HEDLUND, of Multnomah County	Democratic	For President JAMES M. COX
19	ROBERT A. MILLER, of Multnomah County	Democratic	
20	A. E. REAMES, of Jackson County	Democratic	
21	ELTON WATKINS, of Multnomah County	Democratic	For Vice-President FRANKLIN D. ROOSEVELT
22	WM. F. AMOS, of Multnomah County	Prohibition	
23	MARY H. JEWETT, of Lane County	Prohibition	
24	E. T. JOHNSON, of Multnomah County	Prohibition	For President ARRON S. WATKINS
25	B. LEE PAGET, of Multnomah County	Prohibition	
26	CYRUS H. WALKER, of Linn County	Prohibition	
27	JOHN E. JOHNSON, of Malheur County	Socialist	For Vice-President D. LEIGH COLVIN
28	W. W. MYERS, of Clackamas County	Socialist	
29	B. F. RAMP, of Douglas County	Socialist	
30	W. S. RICHARDS, of Linn County	Socialist	For President EUGENE V. DEBS
31	R. R. RYAN, of Marion County	Socialist	
32	CHAS. H. BEARMAN, of Multnomah County	Industrial Labor	
33	SANDERS D. BERGLUND, of Multnomah County	Industrial Labor	For Vice-President SEYMOUR STEDMAN
34	FELIX J. CARLSON, of Multnomah County	Industrial Labor	
35	NELS H. LOFF, of Washington County	Industrial Labor	
36	JOHN OLSON, of Multnomah County	Industrial Labor	For President WILLIAM W. COX
			For Vice-President AUGUST GILLHAUS

STATE.

FOR UNITED STATES SENATOR IN CONGRESS			Vote for One
37	GEO. E. CHAMBERLAIN, of Multnomah County	Democratic	Vote for One
38	THOMAS A. HAYES, of Multnomah County	Independent	
39	ALBERT SLAUGHTER, of Marion County	Socialist	
40	ROBERT N. STANFIELD, of Multnomah County	Republican	Vote for One
41	C. H. SVENSON, of Clatsop County	Industrial Labor	
FOR REPRESENTATIVE IN CONGRESS, FIRST DISTRICT Benton, Clackamas, Clatsop, Columbia, Coos, Curry, Douglas, Jackson, Josephine, Lane, Lincoln, Linn, Marion, Polk, Tillamook, Washington and Yamhill Counties.			
42	W. C. HAWLEY, of Marion County	Republican-Democratic-Prohib.	Vote for One
43	HARLIN TALBERT, of Linn County	Socialist	
FOR SECRETARY OF STATE.			
44	SAM A. KOZER, of Clatsop County	Republican	Vote for One
45	J. P. SEARS, of Polk County	Socialist	
46	UPTON A. UPTON, of Clackamas County	Industrial Labor	
FOR JUSTICE OF THE SUPREME COURT.			
47	HENRY J. BEAN, of Umatilla County	Republican-Democratic	Vote for Four
48	HENRY L. BENSON, of Klamath County	Republican-Democratic	
49	LAWRENCE T. HARRIS, of Lane County	Republican-Democratic	
50	THOMAS A. McBRIDE, of Columbia County	Republican-Dem.	
FOR JUSTICE OF THE SUPREME COURT. To fill vacancy caused by the resignation of Justice A. S. Bennett.			
Vote for One—By writing in name			
FOR ATTORNEY GENERAL. To fill vacancy caused by the resignation of Attorney General George M. Brown to succeed Justice A. S. Bennett.			
Vote for One—By writing in name.			

FOR DAIRY AND FOOD COMMISSIONER.			Vote for One	
51	C. L. HAWLEY, of Polk County	Republican-Democratic	Vote for One	
52	F. J. VON BEHREN, of Marion County	Socialist		
FOR COMMISSIONER OF THE PUBLIC SERVICE, COMMISSION OF OREGON, DISTRICT COMPOSED OF THE COUNTIES LYING WEST OF THE CASCADE MOUNTAINS. Benton, Clackamas, Clatsop, Columbia, Coos, Curry, Douglas, Jackson, Josephine, Lane, Lincoln, Linn, Marion, Multnomah, Polk, Tillamook, Washington and Yamhill Counties.				
53	WM. D. BENNETT, of Multnomah County	Democratic	Vote for One	
54	FRED G. BUCHTEL, of Multnomah County	Republican		
55	OTTO NEWMAN, of Multnomah County	Socialist		
FOR SENATOR, TWENTY-FOURTH SENATORIAL DISTRICT. Lincoln, Tillamook, Washington and Yamhill Counties.				
56	C. J. EDWARDS, of Tillamook County	Republican	Vote for One	
FOR REPRESENTATIVE, FOURTEENTH REPRESENTATIVE DISTRICT. Tillamook and Yamhill Counties.				
57	F. R. BEALS, of Tillamook County	Republican-Democratic		
FOR DISTRICT ATTORNEY, Tillamook County.				
58	C. W. BARRICK, of Tillamook County	Independent	Vote for One	
59	T. H. GOYNE, of Tillamook County	Republican-Democratic		

COUNTY.

FOR COUNTY JUDGE, Tillamook County			Vote for One
60	HOMER MASON, of Tillamook County	Republican-Democratic	Vote for One
FOR COUNTY CLERK, Tillamook County.			
61	H. S. BRIMHALL, of Tillamook County	Republican-Democratic	
FOR SHERIFF OF TILLAMOOK COUNTY.			Vote for One
62	JOHN ASCHIM, of Tillamook County	Republican-Democratic	
FOR COUNTY TREASURER, Tillamook County.			
63	KATHLEEN MILLS, of Tillamook County	Republican-Democratic	Vote for One
FOR COUNTY ASSESSOR, Tillamook County.			
64	C. A. JOHNSON, of Tillamook County	Republican	
FOR COUNTY SURVEYOR, Tillamook County.			Vote for One
65	W. S. COATES, of Tillamook County	Republican-Democratic	
FOR COUNTY COMMISSIONER, Tillamook County.			
66	H. V. ALLEY, of Tillamook County	Republican	Vote for One
FOR COUNTY CORONER, Tillamook County.			
67	R. N. HENKLE, of Tillamook County	Republican	
FOR COUNTY SCHOOL SUPERINTENDENT, Tillamook County.			Vote for One
68	G. B. LAMB, of Tillamook County	Republican-Democratic	

MOUNTAINS AFFECT BIRD LIFE

Andes Said to Be Responsible for Number of Species Found in South America.

The richness of South American bird-life is due to the presence of the Andes more than to any other one thing. It is the absence of great mountain chains in Africa, which accounts for the comparatively small numbers of species of birds in that continent. From base to summit, four distinct zones of life—tropical, sub-tropical, temperate and alpine—are found in the higher Andes, and each zone has species which are confined to it.

It is not only the height of the Andes which affects bird life. In places, for hundreds of miles, this gigantic range may appear as two or three chains, each not less than 10,000 or 11,000 feet in height, and these climatic walls are as impassable to the species living in the tropical or sub-tropical valleys they enclose as though they extended to the zenith. Isolation is, therefore, added to the factors of climate and sedentaryness in the making of the species, and the three combined have produced a great variety of bird life than is found in any area of similar extent in the world. The American museum of natural history inaugurated in 1911 a biological survey of the Andean region with particular reference to its bird life. As a result of the collections and field studies made, the museum is now in possession of large collections and data from the more northern part of the chain.

FAMOUS BELLS OF BOSTON

Not the Least in the Historic Old City is the One That Was Cast by Paul Revere.

A bell which was cast by Paul Revere still hangs in the belfry of King's chapel, built when Boston was in its infancy. This bell was the one hundred and sixty-first cast by Revere. Besides being a bell caster Revere also was an engraver, a goldsmith and a dentist. Rising above the modest houses is the old North church, from which Revere received his signal previous to his famous midnight ride. Christ church, the second Episcopal church of Boston, is situated in the north end, and is an off-shoot of King's chapel. Its spire, designed and built in 1723, has served as a landmark to guide ships into the harbor. In 1804 this spire was blown down by a great gale, and was shortened by 16 feet. The chime of bells, now silent, which hangs in the tower, was made in 1774, in the foundry of Abel Ruddall, of Gloucester, England. Each bell has engraved upon it an inscription denoting its history. The bells, as was common belief in that time, were supposed to possess the power to dispel evil spirits.

Stage and Movie.

To me the joy of the theater is in the attention forced by a skillfully constructed play acted by players of conviction and artistic power. I have often watched an audience coming from a moving-picture theater, and rarely have I seen a look of more elation or spirit upon the faces of the crowd than would result from the perusal of a newspaper. Whereas, after an evening at an interesting play, the audience pours forth in animation; and even though the play may have been a tragedy, emotions have been stirred and minds stimulated until the reaction shows on every face. So long as the human relation is preserved between actor and audience, so long will the acted drama retain its supremacy in any community.—Otis Skinner in the North American Review.

The Wonder of Eggs.

One cannot find among the multitude of wonders in nature anything more marvelous than the development of an egg, writes Elsa G. Allen in the American Forestry Magazine. Whether it be a butterfly which flourishes for a day only to die after depositing its eggs, or a reptile which lazily leaves its eggs with only the warm sand to mother them, or a fish, like the salmon, which, with incredible strength, jumps the rapids to spawn in the upper reaches of rivers, or most appealing of all, a bird which builds a beautiful nest for its treasures, the egg in every case is structurally the same, and the miracle of life unfolds according to the same laws of cell division.

Reckoning Longitude.

Longitude in the United Kingdom and generally in the United States is reckoned from Greenwich, degrees being known as east longitude and west longitude from that point until they meet in the Pacific ocean at 180 degrees from Greenwich, the opposite zero point, Asia being in east longitude and the United States in west longitude. For the same reason the term Orient is applied to the East and Occident to the West. It may be said that Germany reckons longitude from Berlin, France from Paris and Spain from Madrid, while sometimes it is reckoned in this country from Washington, but, usually speaking, Greenwich is meant.

A Perfect Chesterfield.

"I had a little experience this morning with an extremely polite man." "Tell me about it." "I was standing near him in a barber shop while a dark attendant was briskly applying the whisk broom. The gentleman turned to me and said, 'Excuse my dust.'"—Birmingham Age-Herald.

W. C. DUETER

DENTIST.
TILLAMOOK BUILDING (Over Haltom's).
Tillamook—Oregon.
DR. O. L. HOHLFED.
VETERINARIAN.
Bell Phone—2F2
Tillamook—Oregon.

All Cows Are Alike to the EMPIRE

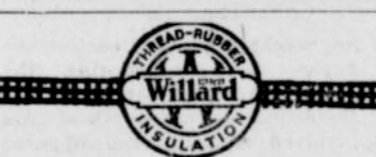
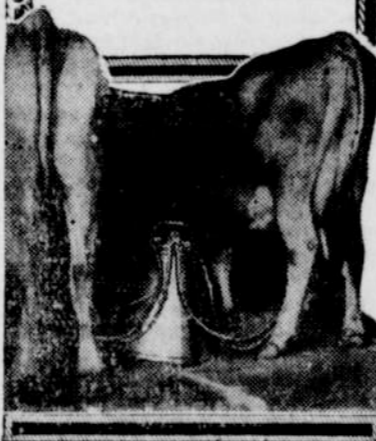
HARD milkers or easy milkers—nervous or calm cows—large or small teats—even or uneven udders—they are all alike to the Empire. It milks them all. And Empire teat cups stay on without surcingles or harness.



are now equipped with our new Super-Simple Pistonless Pulsator. No wearing pistons to leak vacuum. It operates teat cups with absolute regularity. Cows like it. It soothes and quiets them. Results in greater milk flow and also increases period of lactation.

Come in and see this different, better milking machine or, if you wish, phone us and we'll bring the machine to your farm; no obligation.

J. BURCHARD.



T. R. Wins

Threaded Rubber Insulation is so important to the storage battery as the tungsten filament is to the electric light. There are other insulations and other filaments but none that serve quite so well. The Still Better Willard Battery—the only one with Threaded Rubber Insulation—has been selected by 136 manufacturers of cars and trucks.

TILLAMOOK BATTERY STATION, WILLARD SERVICE.



Dr. Howard, CHIROPRACTOR,
211 TILLAMOOK BUILDING
Free Consultation and Spinal Analysis.

To Whom It May Concern.

The City Transfer Co. has changed hands in no way connected with the Tillamook Transfer Co.
A. F. Wallace.

BUICK

WHAT will please you most about the new Nineteen Twenty One Buick models is their utility. You can rely on the Buick Valve-in-Head motor for power for the hardest travel, the greatest speed emergency.

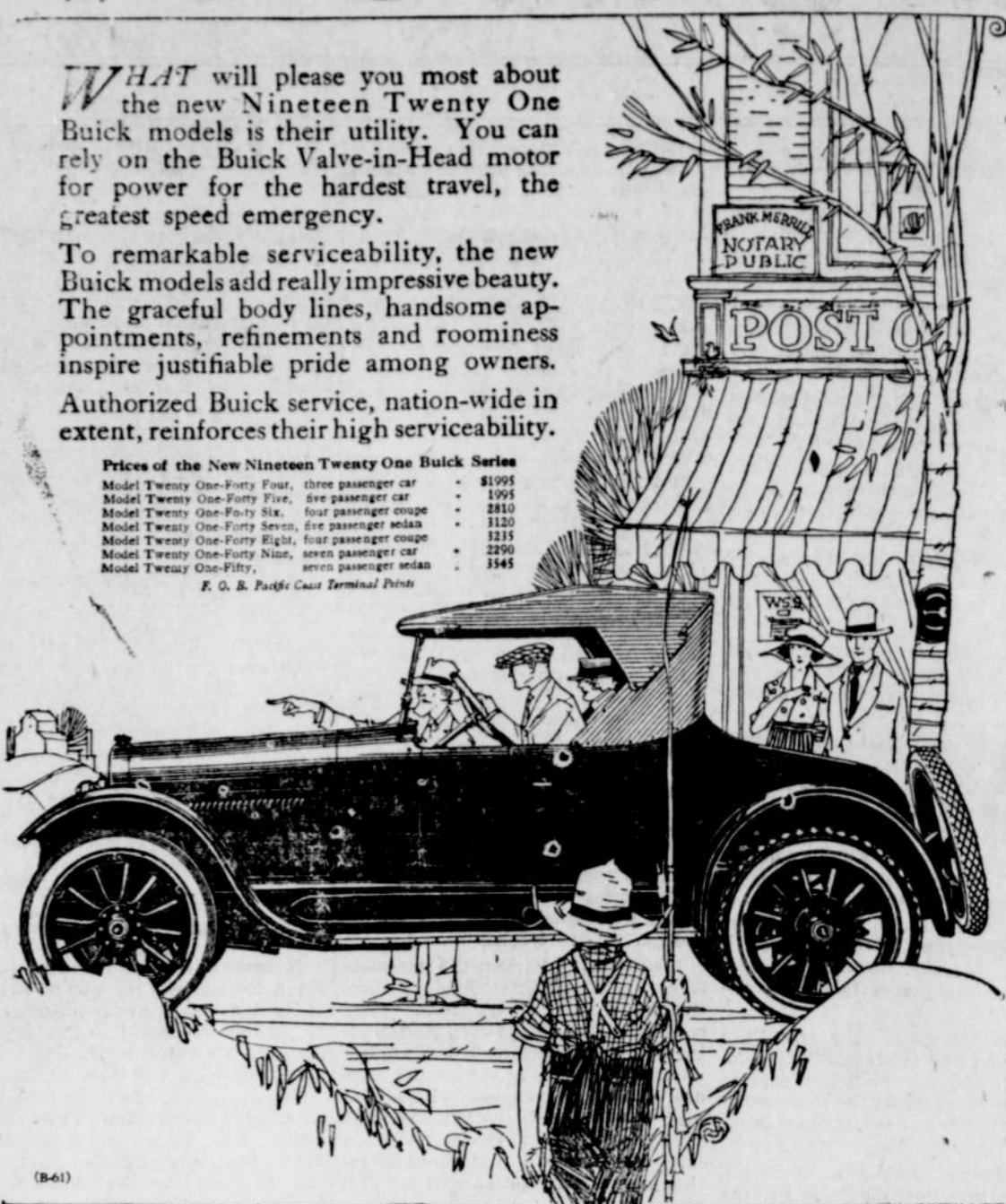
To remarkable serviceability, the new Buick models add really impressive beauty. The graceful body lines, handsome appointments, refinements and roominess inspire justifiable pride among owners.

Authorized Buick service, nation-wide in extent, reinforces their high serviceability.

Prices of the New Nineteen Twenty One Buick Series

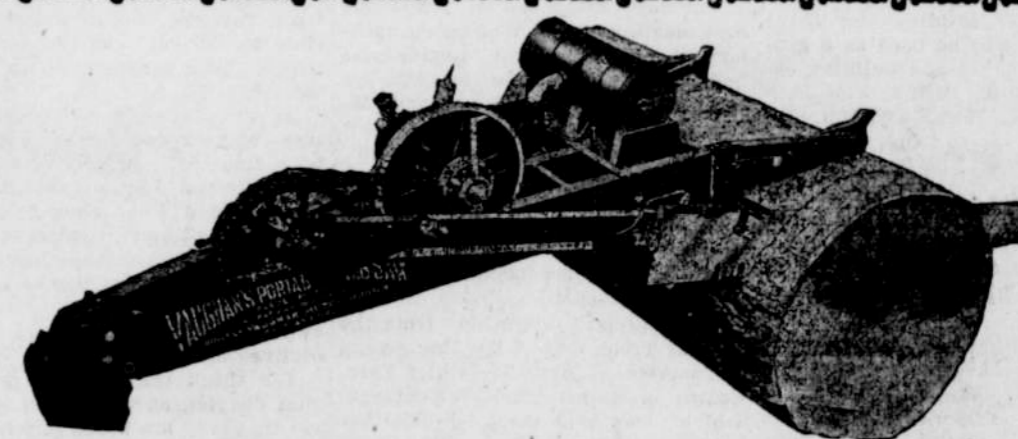
Model Twenty One-Forty Four, three passenger car	\$1995
Model Twenty One-Forty Five, five passenger car	2410
Model Twenty One-Forty Six, four passenger coupe	2125
Model Twenty One-Forty Seven, five passenger sedan	2290
Model Twenty One-Forty Eight, four passenger coupe	2145
Model Twenty One-Forty Nine, seven passenger car	2290
Model Twenty One-Fifty, seven passenger sedan	2445

F. O. B. Pacific Coast Terminal Point



ACKLEY & MILLER.

WHEN BETTER AUTOMOBILES ARE BUILT, BUICK WILL BUILD THEM



VAUGHN'S, the Original and Best.

Will set it up and put it to work for you to your satisfaction or you don't pay a cent. To be had now at the Tillamook Clay works, E. G. KREBS, Prop. See that clutch and sawholder? Put your saw on or take it off in a jiffy. Phone or call.

FAIRBANKS-MORSE HOME LIGHT PLANT

Carry 40 Lights.

Let's put a Flea in Your Ear about Electric Lights on the Farm.

You'll find it easier to keep competent help; you'll greatly reduce your fire risk; you and your wife will live longer; and everybody be always happier after you've had us install an Electric Home Light Plant.

Four Hundred and Ten Dollars.

The cost is so moderate that it's a big paying investment.

R. F. ZACHMANN.

Notice

In the County Court of the State of Oregon, for the County of Tillamook, in the matter of the estate of William Thomas Collins, deceased.

Notice is hereby given to all to whom it may concern, that the undersigned has been, by the County Court of Tillamook County, Oregon, duly appointed Administratrix of the estate of William Thomas Collins, deceased; and all persons having claims against said estate are hereby notified to present same, duly verified, as by law required, to the undersigned, or to her attorney, John Leland Henderson, at Tillamook, Oregon, within six months from this date.

Dated September 9th, 1920, the first publication of this notice.

Lizzie Collins, Administratrix of the estate of William Thomas Collins, deceased.

John Leland Henderson, Attorney for said estate.



PACIFIC-INT. LIVESTOCK EXPOSITION.

HERE is a coming event of the utmost interest to Tillamook County. At that great show in Portland there will not only be exhibited the West's prize dairy and beef cattle, sheep, hogs, goats and horses, but there will also be an exhibit of dairy products in connection.

If local farmers wish to take advantage of the Daily Auction Sales to enlarge or improve their herds, the First National Bank will lend the necessary co-operation, of course.

DIRECTORS.

JOHN MORGAN, C. J. EDWARDS,
A. W. BUNN, R. C. LAMB,
HENRY ROGERS, W. J. RICHERS,
C. A. McGRIBB

The First National Bank
TILLAMOOK, OREGON.